



Artists Open Houses




7-29 May 2022

AOH40
aoh.org.uk



STAR BREWERY GALLERY

A BEAUTIFUL VISUAL ART EXHIBITION SPACE

 @StarBreweryGallery  @SBGalleryLewes  @starbrewerygallerylewes

www.starbrewerygallery.com



The Gallery is situated in the heart of Lewes. This multifunctional space is ideal for both solo and group shows. To inquire about staging an exhibition contact starbrewerygallery@gmail.com

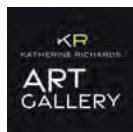


07932 500 952

Castle Ditch Lane, Lewes, BN7 1YJ



Sponsors



Supporters



AOH Team

Judy Stevens *Festival Director*
Chris Lord *Design and Development Director*
Fiona McTernan *Festival Manager, Ads and Sponsorship*
Lisa Yousefi *Digital Communications*
Tim Jukes *Website Design and Development*
Claire Quigley *Finance Manager*
Claire Wearn *Projects Curator*
Pandora George and Esme Lynch *Bullet PR*
Paul Clark *Distribution*
Syl Ojala *Photography*
Idil Bozkurt *Film production*

Thank you

Exhibitions selection panel members:
Sarah Watson *Artist at Figment Arts*
Claire Wearn *Exhibitions Curator and Photo Fringe Festival Director*
Nicola Coleby *Partnerships & Development Manager, Royal Pavilion & Museums*

Our partners

Julian Caddy *CEO Brighton Fringe*
David Parker *Artistic Director, Figment Arts*
Clare Sheppard *Producer and Support, Figment Arts*
Suzanne Hutchinson *Senior Lecturer Arts and Media University of Brighton*
Roger Browning *Victor Boorman & Co.*
Charlotte Barrow *Visit Brighton*
Angi Mariani *Latest TV*

Contents

- 3 **Introduction**
- 5 **AOH 40th Anniversary exhibitions and film:**
 - 5 **Ned Hoskins** Founder of Brighton's Open Houses movement
 - 6 **Towards the Future** Early Fiveways Artists and Oral History Film
 - 7 **Towards the Light** Work by current AOH artists
 - 8 **Towards the Light** Work by University of Brighton students
 - 9 **Towards the Light** Work by emerging artists
 - 10 **Figment Arts Studio Artists** Work by neurodiverse artists
 - 11 **Gary Goodman** @The Old Market
- 13 **Travel information**
- 13 **How to use the brochure**
- 14 **Map** Showing venues in Brighton and Hove
- 17 **Beyond The Level**
- 21 **Brunswick**
- 25 **Central**
- 29 **Dyke Road**
- 33 **Fiveways**
- 43 **Hanover**
- 47 **Hove**
- 55 **Kemptown**
- 63 **Seven Dials**
- 69 **West Hove**
- 75 **Independent**
- 81 **Map** showing venues outside Brighton and Hove
- 83 **Coastal**
- 85 **Ditchling**
- 90 **Independent (Sussex)**



Cover artist: Gary Goodman

AOH 2022 brochure cover artist, Gary Goodman, is a painter and poet who works from a shed at the end of his garden. Gary has exhibited his paintings and prints and has performed his poetry around the world: from the frozen wastes of Norway and Alaska down to the warmth of New Zealand and the Southern States of USA.

Cover image: *Spring Garden: Gary Goodman*

Design: Chris Lord

Print: Gemini Press www.gemini-press.co.uk

Artists Open Houses Ltd is a not for profit company.

Registration N°. 5420675 (England and Wales)

Disclaimer: Whilst every care has been taken to ensure that the information given in this publication is accurate at the time of going to print, AOH cannot be held responsible for any variations, errors or admissions of which we have not been advised. We recommend that visitors confirm details for individual venues online before setting out. No recommendation is implied in any of the listings. Under no circumstances can AOH accept responsibility for any loss, damage or injury sustained by any member of the public visiting the Artists Open Houses festival.



HANNINGTONS
BRIGHTON



MEET HANNINGTONS LANE

Hanningtons, Brighton's most vibrant retail, cultural and foodie hotspot, is delighted to be part of Artists' Open Houses.

Home to a variety of brands, from international to independents, makers, designers, food artisans and pioneers. Visit us for restaurants, art shops, coffee houses, artisan ice cream, gifts, homeware, wellbeing, beauty and fashion. Many of our retailers are unique, ethical and sustainable.

THE OLD
MARKET

PRESENTS

ALICE RUSSELL

+ GUESTS

A
REIGNING
WOMEN
CELEBRATION

WEDNESDAY 1 JUNE,
19:30 (DOORS)
TICKETS: 01273 201 801
THEOLDMARKET.COM

AOH40

Artists Open Houses

May 7–29 2022

Artists Open Houses is **40 years old** this year! Alongside an exceptionally brilliant range of artists' houses and studios, this May's festival is a celebration of forty years of Brighton & Hove's Open Houses movement. It is also a commemoration of its founder, Ned Hoskins, who in 1982 created a movement enabling access to art for everyone, by simply opening his Fiveways front door and inviting the public inside to view his work. Open House trails now happen all over the country and beyond, but it all began here with one man deciding to remove the invisible barriers that kept people out of art galleries by inviting them in to view art in a domestic setting.

The Artists Open Houses has evolved to be not only the original, but the largest, most respected event of its kind, now encompassing the entire city, reaching out to the surrounding countryside.

For the 40th Anniversary, a series of special exhibitions connect through the theme *Towards the Light*, taken from a title of one of Ned's paintings and reflecting his concerns with nature and the natural world. Exhibitions include work of students, emerging artists, neurodiverse and learning-disabled artists, established AOH artists and some of the earliest members of the Fiveways Artists' Group; work is shown at Brunswick Square's Regency Town House and Basement and at Devils Dyke Farm. Accompanying the exhibitions an oral history film explores the history and legacy of the Artists Open Houses movement.

Over the forty years, Artists Open Houses has become a major arts event that embraces the entire community, encompassing all generations, from school students to residents of a seniors' centre; from artists just starting out on their careers, to those with national reputations. Visiting artists in their homes and studios, viewing amazing art, meeting the artists and makers, hearing about how the work is made and what inspires its makers, is always a great day out. Many Open Houses offer tea and cake in artists' gardens. Explore the city and travel out to surrounding villages, meeting the artists, buying new artworks for your home; the Artists Open Houses offer illumination, inspiration and fun!

Judy Stevens
AOH Festival Director

Covid-19 information

Although there are no legal restrictions in place for the AOH May 2022 Festival, some venues may still have visitor guidelines in place for visitors' and artist's safety and comfort.

The Secret Garden presents In Nature: A Celebration in Sculpture

Sunday 3 April – Sunday 5 June 2022
Saturdays, Sundays and Bank holidays,
11am – 5pm

The Secret Garden is unique in Brighton & Hove: the only place where major outdoor sculptures can be shown in a secure setting.

This exhibition takes the theme of trees and seed forms. It includes the magnificent Richmond Oak, and accompanying works by Kenneth Armitage; innovative sculptures by Will Nash; a selection of Wendy Taylor's acclaimed Seed Series; and striking tree forms by Julian Wild.

Free entry, wheelchair accessible, café

The Secret Garden Kemp Town,
Bristol Gardens, Brighton, BN2 5JE
www.secretgardenkempstown.co.uk



WATERPAPERPAINT

VISIT CASS ART BRIGHTON FOR ALL YOUR ART SUPPLIES

UK'S LEADING ART SUPPLIES RETAILER - 21 MARKET STREET, BN1 1HH
CASSART.CO.UK/BRIGHTON

CASS ART
EST.1984



Ned Hoskins in his studio, c1982

Ned Hoskins

Founder of Brighton's Open Houses movement

When Ned Hoskins returned to Brighton, following a year spent living and working in California, he was struck by the lack of opportunities for visual artists to exhibit their work in the city. His solution was to turn his home into a gallery and open it to the public during Brighton Festival. From this small seed the Artists Open Houses movement grew, spreading out across the city - and is now emulated both nationally and internationally.

Ned Hoskins was a painter, etcher, teacher and curator. Born in 1939 in Croydon, at four years old he moved to Yorkshire and considered himself a Yorkshire man. He studied at Harrogate Art School, then at the Royal College of Art where he worked as a technician for David Hockney and got to know the Rolling Stones. Later he worked as a designer and part-time lecturer at West Sussex College of Art, before moving to Buckinghamshire, lecturing at High Wycombe Art College. A fine art fellowship at Southampton University was followed by lecturing in California where he met Andy Warhol - before returning to Brighton to found the Fiveways Artists' Group.

Ned believed art is for everybody; he wanted everyone to be able to view and own original art. By removing the invisible barriers that kept people out of art galleries and inviting the public into his home, Ned's aim was to democratise art, opening it up to all.

Ned died in 2021 at the age of 81. His art has sold around the world, his paintings are held in private collections throughout the UK and as a permanent display in Southampton City Art Gallery - but the thing he was most proud of was the legacy of the Artists Open Houses.

« Mid April in our house was always a month of great activity. Ned would take down all the paintings, touch up the paint work, fill in holes where paintings had hung and generally prepare the walls as a canvas for his work. Then the new work, he nearly always showed new work, would be brought down from his studio and he would move it around working out the best place for each piece. If he was exhibiting with another artist their work would be moved around to find the best place for that work too. Once the work was hung, furniture would be moved or stored upstairs in our bedroom. Finally, I would be brought into the activity to write his statements and type up titles and the prices. As time passed this activity became more frenetic until the evening before the opening would culminate in us going to the Private View where Ned was always the life and soul of the party. »

Gerry Holloway, Ned's wife.

« There are so many memories of the open houses for me, I was 14 the year my Dad opened his house for the 1st time. It was a part of my life ever since, to a point where I'd felt almost possessive of it on his behalf.

The queue to get into the house would go up the street, the early days of Open Houses, it was an event. We would have to let one in one out, to keep it safe.

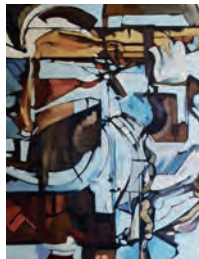
The story of Ned opening the house caught people's imaginations, there would be interviews in the press, local TV would turn up I couldn't have been prouder of my Dad! »

Cass Hoskins, Ned's daughter

Reflected Xmas: Ned Hoskins



Enfolded Structures (detail): Ned Hoskins



Below: Ned giving his youngest two grandchildren an art lesson



Towards the Future

Work by early Fiveways artists and oral history film

**Downstairs @ The Regency Town House
13 Brunswick Square, Hove, BN3 1EH**

May 7th -29th
Fridays 2pm – 5pm
Saturdays and Sundays 11am – 5pm

During the early 1980s Brighton, then as now, was home to an astonishing community of visual artists. Some of these artists had opened their studios to the public as part of the 70's Open Studios movement, but none had previously opened their homes. It was a rebellious and democratic move. Not all artists had studios, but all had a home. For artists, it was taking control of their own curation, selling their own work and provided the ability to exhibit work in a town with few such opportunities. It was a reaction against the perception of 'high culture' parachuted in to the town, oblivious to the quieter, maybe more personal and just as interesting work that was happening within the town.

In 1982 Ned Hoskins opened his house for the first time; he was joined by two or three other artists, living in nearby houses, the following year. Soon the Fiveways Group had formed.

This exhibition shows the work of some of those early pioneers of Open Houses who all lived in the Fiveways area of Brighton; an area quite different then from now. The accompanying oral history film hears from these artists about their reasons for inviting the public into their homes, what they learned and experienced; how their practices as artists changed as a result of a more direct dialogue with their audiences. How important a place Artists Open Houses has played in their lives.

The concept of Artists Open Houses has been described as a gallery without walls. These artists tell us what it was like in the early days, living behind those open front doors.



Family Counsellor



Above: Annelies Clarke

Left: Rex Matthews

Below: Judy Stapleton
holding a piece of her work,
photo by Adrian Turner



See AOH 40th Anniversary website pages for list of exhibiting artists:
www.aoh.org.uk

Oral history project artist participants:

Annelies Clarke, Rex Matthews, Judy Stapleton, Adrian Turner,
Viv and Paul Martin, Shyama Ruffell, Colin Ruffell and Fran Slade

Oral history film produced by: Idil Bozkurt

Exhibition curated by: Claire Wearn, Independent Creative Producer
and Curator @clairewearn

AOH40



Towards the Light

Work by current AOH artists

**Upstairs @ The Regency Town House
13 Brunswick Square, Hove, BN3 1EH**

May 7th -29th
Fridays 2pm – 5pm
Saturdays and Sundays 11am – 5pm

Although in the early years the Open Houses movement was based solely in the Fiveways area, over the years it has grown to encompass all parts of the city, out to Ditchling and to several villages and towns across the Downs. It is a tribute to the strength of Ned Hoskins' original idea that the festival continues to build and flourish and is now in its 40th year.

The theme of this exhibition, *Towards the Light*, is taken from the title of one of Ned Hoskins' paintings. The exhibition invited submissions, connecting to the theme, from all artists taking part this year in the Artists Open Houses festival.

Ned was distinctly inspired by the environment, seeking out nature and places to wander whenever possible; from his early days at art school in Harrogate where he painted on the Yorkshire Moors, through to his time in California, Europe and more locally, where his work took frequent inspiration from the South Downs. As we all look towards

brighter moments after recent restrictions, Ned's work, actions and legacies offer a fabulous opportunity to remember how important it is to take risks, make art and work with your community.

Ned Hoskins was a trailblazer who started something so pertinent that its relevance resonates as strongly today as 40 years ago. As artists continue to seek ways to show their work, support each other and build a stronger art sector, Artists Open Houses is proud to spotlight the inspiring actions of Ned Hoskins who, 40 years ago, created a movement enabling access to art for everyone, by simply opening his front door and inviting the public inside to view his work.

See AOH 40th Anniversary website pages for a full list of exhibiting artists: www.aoh.org.uk

Exhibition curated by: Claire Wearn, Independent Creative Producer and Curator @clairewearn

AOH40

Towards the Light

Work by University of Brighton students

**The Regency Town House Basement
Housekeepers' Room and Servants' Hall
10 Brunswick Square, Hove, BN3 1EH**

May 7th -29th
Fridays 2pm – 5pm
Saturdays and Sundays 11am – 5pm

The exhibition at Regency Town House Basement features artworks by four current University of Brighton Fine Art course students. The artists employ a diversity of art practice forms when addressing the contemporary subjects of relationships, migration, workers value and considerations of identity.

Sara Paowana investigates her Thai and British heritage in the slide and sound installation work *Isaan*. The artwork is an intimate account of loss and separation from her mother's perspective as she reflects on her traumatic migration experience from rural Thailand to Britain.

Melanie Woodward's *Omang* series uses fingerprints as a form of self-portraiture to explore and reclaim identity in response to nationality renunciation. Omang presents an organised display of fingerprints as proof of identity, while Omang II in contrast has a disobedient composition of illegible, layered fingerprints which represent a loss of a sense of identity.

Finn Gayton interactive, live performance installation, *Lorry Boy*, comments on the sociological and political themes of employment relationships and the commodification of people. The artwork examines the relationship between employer, employee, servant and customer.

Megan Ryan wax casts of feet in *Journey*, depict the cycle of a relationship. The wax feet come together, walk in unison and drift apart. During the making process the feet have been burnt to indicate the disintegration of a relationship.



Isaan Sara Paowana



Omang Melanie Woodward



Journey Megan Ryan

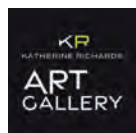


Lorry Boy Finn Gayton

See AOH 40th Anniversary website pages for more information:
www.aoh.org.uk

AOH Student Bursary

Exhibition sponsored by Katherine Richards Art Gallery.
See page 77 for more about Katherine Richards Art Gallery



AOH40



Shelter (Night): Jack Shearing

Towards the Light

Work by emerging artists

**The Regency Town House Basement kitchen
10 Brunswick Square, Hove BN3 1EH**

May 7th -29th
Fridays 2pm – 5pm
Saturdays and Sundays 11am – 5pm

« Ned taught me how to hang paintings, cut mounts and build frames. The whole thing inspired me to go into the Arts as well and years later, when I'd been to art school, I exhibited at his open house which was a huge honour as I knew he wouldn't have offered me a space if my work wasn't good enough! »

Cass Hoskins

Ned Hoskins' daughter

Ned Hoskins believed in encouraging young artists. He was an inspirational tutor and took the work of young artists very seriously, inviting students and fellow artists' children to exhibit in his Open House. Nurturing the next generation of artists was crucial.

Reflecting Ned's concern, this exhibition invited artists just setting out on their creative practices to submit work connecting to the theme *Towards the Light*. A title taken from one of Ned Hoskins' paintings.

In recognition of the difficulties that the last two years has brought to exhibition making, especially for those in the early stages of their careers, this exhibition seeks to showcase new or recent works by emerging artists in the Brighton and Hove area, reflecting ways in which they have continued to create and push boundaries despite recent challenges.

All the artists exhibiting in this exhibition have graduated within the last three years, or are within the first three years of developing their practice.

See AOH 40th Anniversary website pages for a full list of exhibiting artists: www.aoh.org.uk

Exhibition curated by: Claire Wearn, Independent Creative Producer and Curator @clairewearn

This exhibition is supported by HOUSE Biennial



AOH40

Figment Arts Studio Artists

Work by neurodiverse artists

An Artists Open Houses exhibition
at Devils Dyke Farm

Devils Dyke Farm, Devils Dyke Road, Brighton, BN1 8YL
Weekends 7-29 May 11.00- 17.00

As part of the AOH 40th Anniversary exhibitions Figment Arts Studio artists are responding to the theme *Towards the Light*, a title taken from a painting by Ned Hoskins, founder of the Open Houses movement. Using different mediums the exhibition includes poetry, illustration, photography, performance art and screen based work.

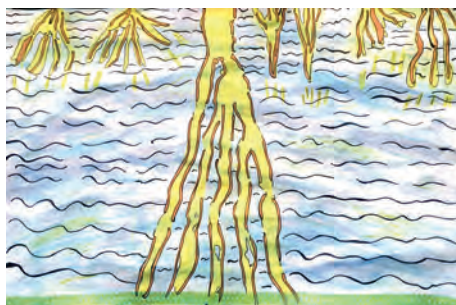
The Figment Arts Studio is a group of autistic, learning disabled and neurodiverse artists. They worked together remotely in 2020 for an Artist Open Houses exhibition in the window of SOLD in Shoreham-by-Sea. This new chapter of the studio project brings the group together in-person, working from our new space in Lawrence's Art Studio in Hove.

The artists are supported by Figment Arts Director, David Parker, and Freelance Producer and Curator, Clare Sheppard.

Exhibiting artists:

Sarah Watson
Ryan Medlock
William Hanekom
Eleana Button
Debbie Caulfield
Richard Channer

See page 93 for more information about the Figment Arts exhibition
at Devil's Dyke Farm



Sarah Watson 2021



William Hanekom 2021



Ryan Medlock

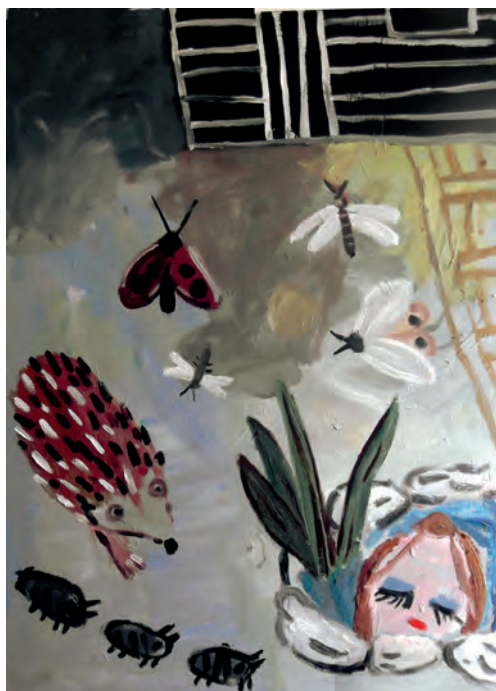


www.figmentarts.co.uk



Figment Arts is supported by Arts Council England

AOH40



Garden With Reflection- oil on canvas- 93 x 69 cms



Autumn in the Garden- oil on canvas- 77 x 62 cms

Gary Goodman

@The Old Market

**The Old Market,
11a Upper Market Street, Hove BN3 1AS**

3rd May – 13th June,
Wednesdays - Fridays 10am -4pm and show times
www.theoldmarket.com

Gary Goodman
Artists Open Houses 2022 Brochure Cover Artist

Gary Goodman is a painter and poet who works from a shed at the end of his garden. Gary has exhibited his paintings and prints and has performed his poetry around the world: from the frozen wastes of Norway and Alaska down to the warmth of New Zealand and the Southern States of USA.

Gary teaches at various colleges and universities and runs workshops in drawing, painting and printmaking. He likes animals and thunderstorms and lots of other things, often producing his best work when bored.

Gary's work has a strength and rawness; his imagery is resoundingly direct, unbothered by artistic self-consciousness and politeness; unrefined, unmannerly yet sensitive. His art is about another world born of this world. A world you might not want to look at because it seems forever winter, cold and sad. But there is an unbearable attraction, a familiarity and a longing.

« Far from brutal, Goodman's way of painting is highly poetic... Primitive? Crude? I marvel at his lyricism and beauty. »

Prof Norbert Lynton

Gary will be also be showing his prints and paintings at *Art at 27* in the Seven Dials trail (see p67).

www.garygoodman.wordpress.com



Travel information

Bus

www.buses.co.uk

Travelling around the city to the Artists Open Houses couldn't be easier with the Brighton & Hove Buses app. For just £4.70 a day you can have unlimited travel on any Brighton & Hove Bus, including night buses. Tickets are available 24/7 and can be purchased to travel immediately or saved until later. Simply buy and activate your ticket, show the driver and away you go.

Rail

www.nationalrail.co.uk

Bike Share Scheme

www.btnbikeshare.com

The system uses SoBi smartbikes, which are available for hire in central Brighton & Hove stretching along Lewes Road towards Brighton University and the University of Sussex. For any enquiries about using the scheme please contact support@BTNBikeshare.com or call 01273 978096.

Cars and Parking

www.brighton-hove.gov.uk/content/parking-and-travel/parking

Brighton & Hove City Council operates several off-street car parks and numerous on-street pay & display parking spaces across the city. Most on street parking is now operated through the PaybyPhone app. Download the PaybyPhone app from your app provider or call 01273 458458 to register for phone payments if you don't have a smart phone. You can also pay at using cash at a PayPoint. Locate the nearest PayPoint at <https://www.paypoint.com/en-gb>

Although Brighton & Hove City Council has reduced the number of on street cash pay and display machines, there is usually one per street.

For the location of car parks visit www.park-up.com/brighton

AppyParking is an app that shows all the on-street and off-street parking spaces available www.appyparking.com

Access

The majority of houses are ordinary homes and may not have disabled access. Please look at the 'disabled access' section on our website for information on which houses are fully wheelchair accessible.

Opening times

Most Open Houses are open May weekends from 11.00-17.00, but opening times may vary from venue, to so it is best to check individual brochure listings. Some venues are also open on weekdays.

See our website for more information about listings and events: www.aoh.org.uk

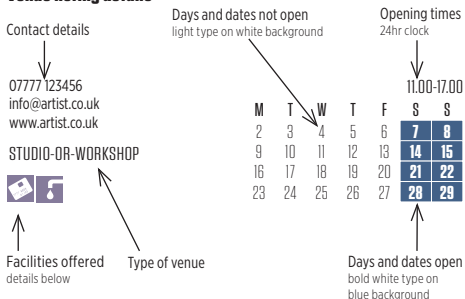
How to use the brochure

The map on the following pages, shows venues within the city. The listings for those venues are on pages 17 to 79. Listings and maps for venues in the surrounding area are on pages 81-93.

Information on opening times, opening dates and facilities offered by venues, are at the bottom of each listing.

Key to symbols

Venue listing details

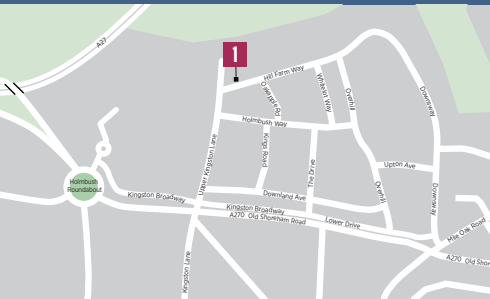
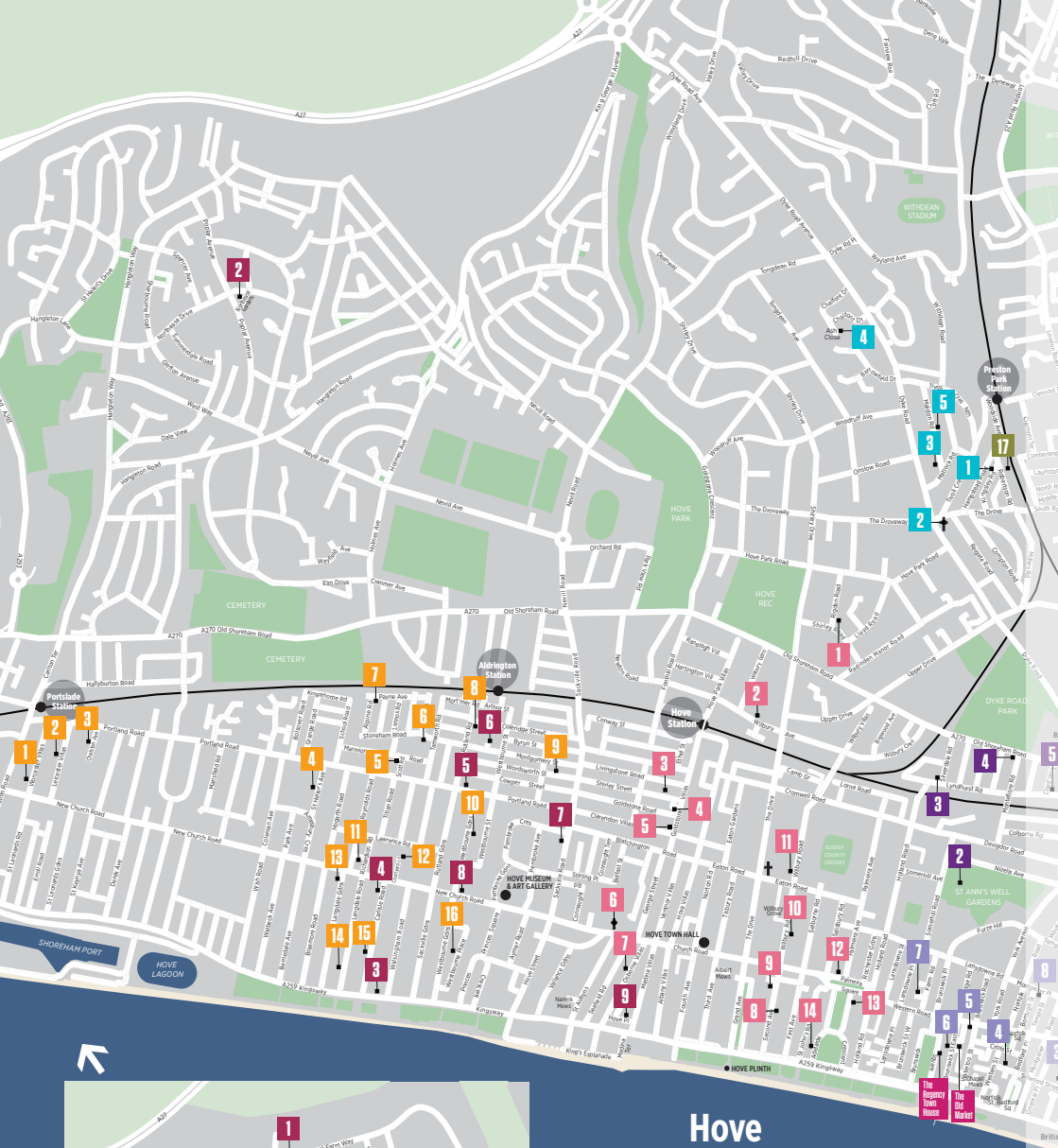


Facilities offered

- New venue – first year open
- Refreshments served
- Garden open
- Easy parking
- Live music
- Workshops/demonstrations
- Disabled access
- Card payment facility
- Tap water refill available
- Food served

Maps

- Open House venues
- Open House venues in other trail maps
- Railway station
- Landmark building
- Church
- Car Parking
- Built up areas
- Park or urban green area
- Rural area
- Water



Hove

WEST PIER



Brighton

Kemptown

BRIGHTON MARINA



TAKE THE PLUNGE

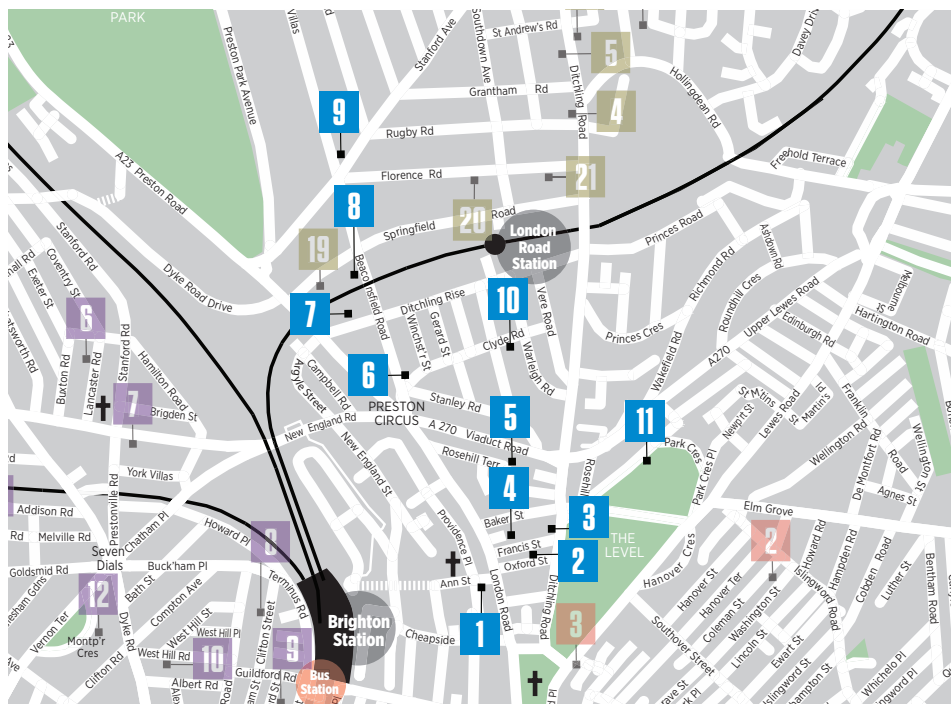
WITH A COURSE AT THE MET

Explore your creativity with a leisure and hobby course this spring.

- | | | |
|----------------------------------|--------------------|------------------|
| ■ Ceramics | ■ Floristry | ■ Photoshop |
| ■ Collage | ■ Graphic design | ■ Pottery |
| ■ Creative writing
and poetry | ■ Jewellery making | ■ Printmaking |
| ■ Embroidery | ■ Life drawing | ■ Silversmithing |
| ■ Dressmaking | ■ Painting | ■ Stained glass |
| | ■ Photography | ■ Textiles |

gbmc.ac.uk/take-the-plunge

Beyond The Level



Beyond the Level celebrates 28 of the 40 Open House years!

One of the original trails it has evolved into diversely eclectic houses, studios and a café community.

The trail showcases work of practising artists, designers and makers in or around the vibrant, rejuvenated London Road, Brighton area.

North and west of the Level recreation space, it extends from Hollingdean Road to meet Fiveways trail, dropping down to the Preston Circus community and bustling London Road. Visit informal and homely settings offering quality original arts and crafts at affordable prices. This year we honour our sadly deceased, long-time member, Jennifer Beresford, in a special show at Nick Ford's studio.

Note that many venues now have card payment facilities, but some only accept cash or cheques. Where artists' homes are venues we may be unable to offer specialist access for disabled visitors but will endeavour to offer appropriate assistance. Visitors are welcome to call houses and studios in advance to discuss specific requirements. Pay us a visit and find us on Instagram, Facebook and Twitter.

Instagram [@beyondthelevelofficial](#)

Facebook [www.facebook.com/groups/beyondthelevel/](#)

Twitter [@beyondthelevel](#)

Travel information

Walking Much of the trail is flat and accessible on foot or bike

Bus 5, 5A and 5B (Preston Circus), 26, 46 and 50 (Ditchling Road), 23, 24, 25, 28, 29 and 49 (Vogue Gyratory).

Rail London Road station in the middle of the trail, has services to Brighton and Lewes.

Brighton station is also close to the trail offering mainline services to London, Bedford, Southampton, Eastbourne, Lewes and Hastings.

Sponsors

Moe's at the Circus, Coffee Bar
[www.facebook.com/moescoffeebar](#)

Arkwrights Grocers & Deli
[arkwrightsdeli.com](#)

Nick Ford Photography
[nickfordphotography.co.uk](#)

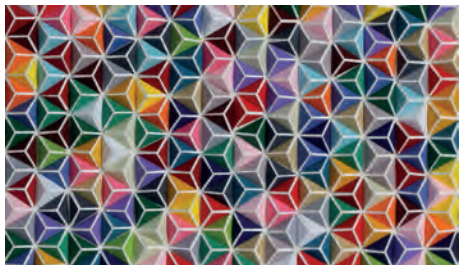
North Star Studios Ltd
[northstarstudio.wordpress.com](#)

'The Laughing Policeman' MC Services
 07719 478644

Palate Bottle Shop
[palatebottleshop.com](#)

1 ATELIER 51 The Studio Upstairs

51 Providence Place, Brighton BN1 4GE



The Venture of Random & detail: Rhoda & Baker

The Studio Upstairs will be open on the last three weekends only. Its a spacious working artists studio in a Victorian warehouse by the magnificent St. Bartholomew's church, behind the London Road in Brighton. Expect an eclectic selling show, from professional artists **Rhoda K Baker** and **Francis Bloomfield**. Interesting work in a range of techniques: drawing, printing, painting, 3D, collage and mixed media. Truly unique, intriguing, curious, experimental, surreal and humorous art!

07815 021354
rhodakbaker@gmail.com
rhodakbaker.co.uk

STUDIO-OR-WORKSHOP



11.00-17.00						
M	T	W	T	F	S	S
2	3	4	5	6	7	8
9	10	11	12	13	14	15
16	17	18	19	20	21	22
23	24	25	26	27	28	29

2 Oxford St – Nick Ford's Studio

Nick Ford Photography, 19 Oxford Street, Brighton BN1 4LA



Jennifer Beresford

In loving memory of **Jennifer Beresford**. Jennifer was one of the original AOH and 'Beyond The Level' artists on Ditchling Rise, who we sadly lost last year. Her work is truly fabulous and the absolute definition of Brighton at its best. In this special exhibition, we invite you to come and see her beautiful legacy, along with

complimentary work by local creatives.

Jennifer Beresford *Paintings*

Nick Ford *Photography*

Judy Alexander *Mixed media*

Graham Allum *Mixed media*

Rosie Tweedale *Ceramics*

Susan Beech *Paper and books*

07834 912247
studio@nickfordphotography.co.uk
www.nickfordphotography.co.uk

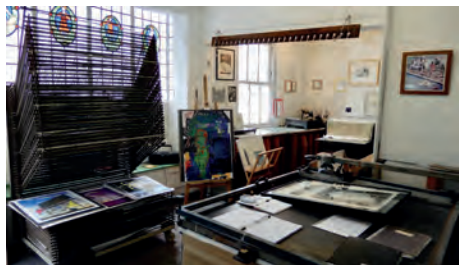
STUDIO-OR-WORKSHOP



11.00-18.00						
M	T	W	T	F	S	S
2	3	4	5	6	7	8
9	10	11	12	13	14	15
16	17	18	19	20	21	22
23	24	25	26	27	28	29

3 North Star Studio

65 Ditching Road, Brighton BN1 4SD



North Star Studio Ltd Ann March

North Star Studios is a Fine Art printmaking and photography Cooperative.

Patrick Madden *Relief prints*
Matthew Hainsby *Screen prints*
Jacintha Phillip
Etchings and screen prints
Annie Cross
Etchings and relief prints

Larna Pantrey-Mayer
Screen prints and relief prints
Abigail Joanides
Relief prints and etchings
Ann March
Etchings and lithographs
Helen Whitmore *Screen prints*
Applications for new membership are invited.
Access 24/7 (£50 per month).

northstarprintmakers@gmail.com
www.northstarstudio.wordpress.com
northstar_printmakers [instagram]

STUDIO-OR-WORKSHOP

11.00-17.00						
M	T	W	T	F	S	S
2	3	4	5	6	7	8
9	10	11	12	13	14	15
16	17	18	19	20	21	22
23	24	25	26	27	28	29

4 Little River Press

Studio 8 (Mezzanine), Open Market,
Marshalls Row, Brighton BN1 4JU



Untitled: Tallin Aylward

Illustrator and screen printer **Tallin Aylward** showcases a new sequence of prints in his recently established screen printing studio.

07871 341349
tallin.aylward@gmail.com
www.instagram.com/littleriverpress/

STUDIO-OR-WORKSHOP



11.00-17.00						
M	T	W	T	F	S	S
2	3	4	5	6	7	8
9	10	11	12	13	14	15
16	17	18	19	20	21	22
23	24	25	26	27	28	29

5 Rose Hill Rebels

Rose Hill Court, Rose Hill Terrace, Brighton BN1 4HS



Flower St. Lane

This exhibition features work created by a collective of artists who live at Rose Hill Court Seniors Housing.

John Mixed media

Joe Photography and mixed media

Lanie Photography and mixed media

rosehillrebels@gmail.com

Facebook: @warthogroses

COMMUNITY



12.00-16.00						
M	T	W	T	F	S	S
2	3	4	5	6	7	8
9	10	11	12	13	14	15
16	17	18	19	20	21	22
23	24	25	26	27	28	29

7 Glass In Fusion

Unit 9 Beaconsfield Studios,
25 Ditchling Rise, Brighton BN1 4QL



Brighton Pavilion Seniors in Gold: Stephanie Else Glass In Fusion

Winner of the 2020 London Art Award, Stephanie invites you to visit Glass In Fusion – a fabulous glass studio – showcasing her vibrantly beautiful glass artworks, gifts and jewellery. On display will be award-winning glass panels and iconic Brighton

In Glass framed tiles, alongside stunning enamel compositions and ceramic sculptures.

A fantastic feast for the eyes – we look forward to seeing you!

Stephanie Else Glass
Romi Shadler Reingold
Ceramics and enamels

07887 975818
stephanie@glassinfusion.co.uk
www.glassinfusion.co.uk

STUDIO-OR-WORKSHOP



11.00-17.00						
M	T	W	T	F	S	S
2	3	4	5	6	7	8
9	10	11	12	13	14	15
16	17	18	19	20	21	22
23	24	25	26	27	28	29

6 INSPIRED! Art at Moe's in Lockdown

Moe's Coffee Bar, 1 Clyde Road, Brighton BN1 4NN



All Hands Together: Verity Sessions

Curtis Tappenden's inimitable coffee bar art class exhibits drawings, paintings and prints, created at online lockdown sessions during the Covid-19 pandemic. This show reveals community strength and inspiration drawn from weekly virtual sessions – an expression of celebration and togetherness through art in difficult times.

01273 600246

curtis.tappenden@gmail.com

www.facebook.com/moescoffeebar

COMMERCIAL PREMISES



Artists:

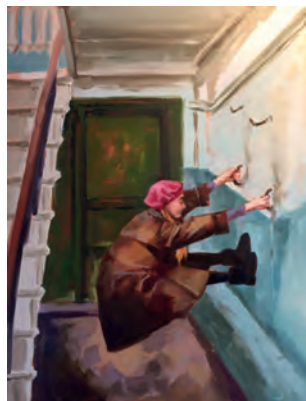
Helen Aitchison,
Barbara Cork, Sue Lynam,
Alice Mapplesden, Eva Mathis,
Gabi Mind, Susi Oddball,
Kay Ramm, Dhyan Scheiffert,
Verity Sessions, Emma Sutton,
Curtis Tappenden, Jan Turner,
Eliza Wyatt.

Mon-Thu 08.00 - 16.00 Fri 08.00 - 23.00
Sat 09.00 - 23.00 Sun 09.00 - 16.00

M	T	W	T	F	S	S
2	3	4	5	6	7	8
9	10	11	12	13	14	15
16	17	18	19	20	21	22
23	24	25	26	27	28	29

8 Archipelago Studio

79 Beaconsfield Road, Brighton BN1 4QJ



Chris Hawkins

Archipelago Studio is a vibrant work space for jewellers and artists.

Come along and see a creative space with a diverse and colourful array of work.

Chris Hawkins
Jewellery and paintings

Solaa
Jewellery

Alyosha Moeran
Stone carver

Lucy Williams
Weaver

07875 929858
chris@chrisawkinsjewellery.com
www.chrisawkinsjewellery.com

STUDIO-OR-WORKSHOP



11.00-17.00						
M	T	W	T	F	S	S
2	3	4	5	6	7	8
9	10	11	12	13	14	15
16	17	18	19	20	21	22
23	24	25	26	27	28	29

9 Brighton Etch Corner House

15a Stanford Avenue, Brighton BN1 6DW



You turn Etching, 35cm x 35cm, Heike Roesel

We are back with a small selection of artists showing their etchings, wood cuts, mezzotints and watercolours, alongside hand crafted baskets, leather goods and exquisite jewellery.

Heike Roesel *Etchings and watercolours*
Jo Riddell *Etchings and wood cuts*
Ray Dennis *Mezzotints*
Tanja Ufer *Jewellery*
Sarah Gardner *Baskets*
Wolfram Löhner *Leather*

07962 615445

heike@heikeroesel.co.uk

www.instagram.com/heike_roesel_etchings/

HOUSE



11.00-17.00						
M	T	W	T	F	S	S
2	3	4	5	6	7	8
9	10	11	12	13	14	15
16	17	18	19	20	21	22
23	24	25	26	27	28	29

10 Milton House

72 Clyde Road, Brighton BN1 4NP



Morning View of a busy street, Ella Morris

Lots on offer so come and say hello.....

Sarah Jones *Prints*

Fen & Co *Jewellery*

Guy Holder *Ceramic sculpture*

Dawn Hajitofi *Ceramics*

Katie Barton *Ceramics*

Ella Morris *Prints*

Jennie Edwards

Hand printed textiles

Becky Crow *Illustrative jewellery*

Vee Pease *Silver jewellery*

Rare Bit *Ceramics*

Madame Treacle *Cards and gifts*

07815 208755

sarahjonesprints@gmail.com

www.sarahjonesprints.co.uk

HOUSE



11.00-17.00						
M	T	W	T	F	S	S
2	3	4	5	6	7	8
9	10	11	12	13	14	15
16	17	18	19	20	21	22
23	24	25	26	27	28	29

11 16 Park Crescent

16 Park Crescent, Brighton BN2 3HA



We look forward to welcoming you to our new AOH. Come and see original art, homewares, gifts and cards.

Marina Ray *Painting*

Liz Dickie *Ceramics*

Nicola Eslick *Painting*

www.instagram.com/aoh16parkcrescent2022/

aoh16parkcrescent2022/

HOUSE



Emma McGowan *Painting*

Fay Hughes *Textiles*

Sue Breakell *Print making*

Patchwork Park *Textiles*

Helen J Holroyd *Prints*

Print making

Julie Nelson *Sculpture*

10.00-17.00						
M	T	W	T	F	S	S
2	3	4	5	6	7	8
9	10	11	12	13	14	15
16	17	18	19	20	21	22
23	24	25	26	27	28	29

LIFE COACHING FOR ARTISTS & CREATIVES

Be
Successful
creatively

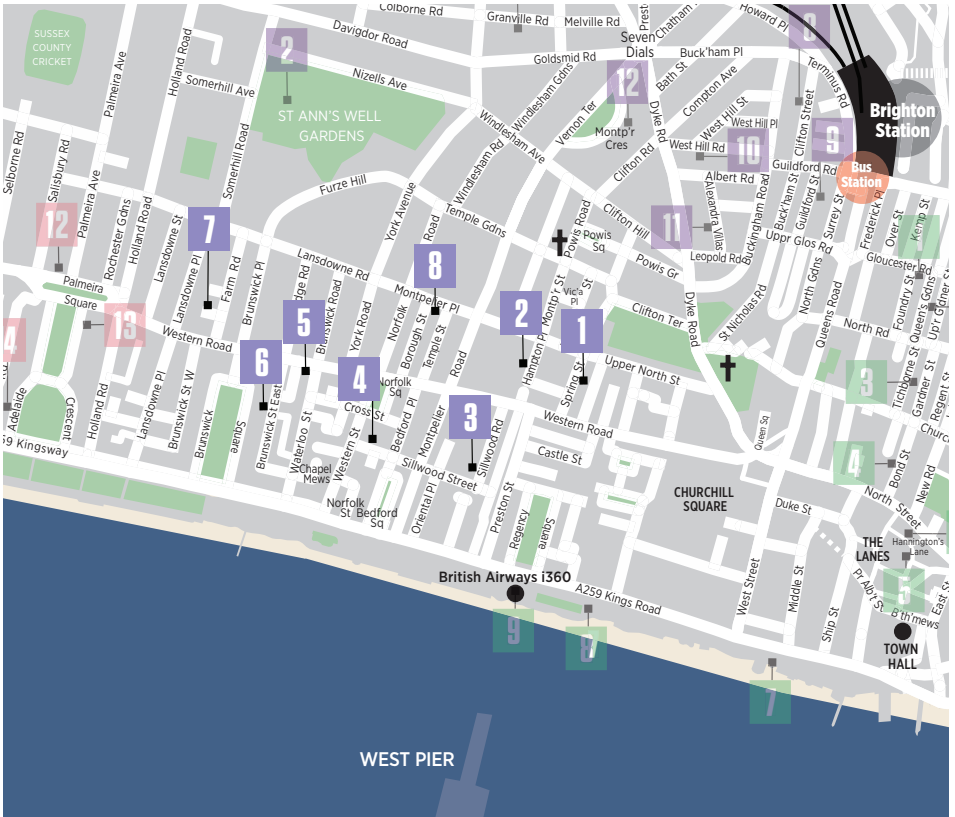
1ST
SESSION
FREE



Ady Griffiths
07870 696942

www.beingyounow.co.uk

Brunswick



Brunswick Town Trail is on the border of Brighton and Hove by the sea-side. The trail showcases high quality art, design and craft in a diverse range of places: houses, studios, workshops, a church, and a hotel. They are all easily accessible on foot. Make a day of it to meet the artists and makers, explore the historically and architecturally fascinating Brunswick Town Conservation Area, visit the seafront for a blast of fresh sea air and a flight on the i360.

As a distraction from the trail there are a number of lovely pubs and cool cafes.

www.facebook.com/brunswicktowntrail

Travel information

Bus Catch any bus running towards Western Road and you will quickly find yourself in the heart of the trail. (1, 1A, 2, 2A, 5, 5A, 5B, 6, 24, 25, 46, 49, 49A, 81).

Train From Brighton station, just hop on the number 6 bus towards Hove.

Car Pay by phone parking is available on most streets in the area.

Walking Better still walk.

1 Faye Bridgwater

The Gallery Muse, 22 Spring Street, Brighton BN1 3EF



Faye Bridgwater in her studio - Flowers

In 2021, Faye Bridgwater won both Artist of the Year and Artist Open House of the Year. In 2022 she brings a new mesmerising collection of originals to Brighton's newest art space The Gallery Muse.

Faye's bright, bold, joyful paintings have been exhibited at Glyndebourne, The Saatchi Gallery, Mall Galleries as well as being the cover for Artwave 2021. She paints contemporary landscapes inspired by the South Downs and Sussex coastline. Her sweeping brush marks and the layering of paint capture the rolling hills and ever-changing sky. She initially starts with filling her eyes with images, often from her Facebook Group *Brighton Skies*. Once in her studio, the process becomes more intuitive: immersing herself in the paint and marks that are formed; it becomes meditative. Her work is emotive and uplifting. It connects the viewer to a moment in time with depth in the paint and pops of colours making your eyes travel around the canvas and drawing you in.

Although Faye is known for her landscapes, last year, she started to explore contemporary florals. Hooked in by their loud, proud colours, she filled her space with flowers collected from the local community. She spent a delightful time playing with the textures and forms of the petals and foliage.

In this week long exhibition, you can view and purchase her new originals and hand finished limited editions and chat to Faye about her inspiration.

Originally from Watford, having studied Fine Art in Sheffield, Faye now calls Brighton her home. She paints in her messy, splatted, chaotic studio which is at the bottom of her garden, just past the apple tree. Studio visits and collaborations are welcome :)

Massive thank you to Eve Ritchie.

Faye Bridgwater *Painting*

Open for one week 16-22nd May

07811 967257
faye@fayebriidgwater.com
www.fayebriidgwater.com

GALLERY



10.30-17.00						
M	T	W	T	F	S	S
2	3	4	5	6	7	8
9	10	11	12	13	14	15
16	17	18	19	20	21	22
23	24	25	26	27	28	29



Peaceful Folds: Photo Credit: Annie Lichenberg of Faye Bridgwater Painting



Painting in Progress in Faye's Studio: Faye Bridgwater



Soon to Arrive: Adventure: Photo Credit: Annie Lichenberg of Faye Bridgwater

2 Anniek Verholt – Abstract Art

25a Hampton Place, Brighton BN1 3DA



untitled abstract 02, Anniek Verholt

This year I will open my home as well as my studio to the public. During the first three weekends of May, I show a variety of abstract oil paintings in my flat on Hampton Place. A selection of large works – up to 2m in size – can be viewed in my studio at the Brighton Open Market on Fridays (by appointment only). I look forward to seeing you!

info@anniekverholt.com
www.anniekverholt.co.uk
www.instagram.com/anniekverholt_artist

HOUSE



10.00-17.00						
M	T	W	T	F	S	S
2	3	4	5	6	7	8
9	10	11	12	13	14	15
16	17	18	19	20	21	22
23	24	25	26	27	28	29

4 Tess Gartland-Jones Studio

48 Sillwood Street, Brighton BN1 2PS



Rock Pool, Brighton, Tess Gartland-Jones

Tess Gartland-Jones is opening, for the first time, a new studio and gallery space. The studio gallery will exhibit oil paintings and limited edition prints as well as welcoming visitors to view works and commissions in progress. You can gain insight into how the oil process transitions from the initial subject or inspiration to revealing the inherent mood and light to evoke the spirit of a place. Evocative and atmospheric landscapes reflecting an experienced artist.

07717 013774
tess@tessgartland-jones.com
www.tessgartland-jones.com

HOUSE



11.00-17.00						
M	T	W	T	F	S	S
2	3	4	5	6	7	8
9	10	11	12	13	14	15
16	17	18	19	20	21	22
23	24	25	26	27	28	29

3 The DOG SHOW

33 Sillwood Road, Brighton BN1 2LE



Edie: Sally Muir

If you love dogs, you will love this Open House filled with over 200 pieces of the very best dog art.

Holly Frean *Painting**

Bridget Baker *Wire*

Henry J Garrett *Illustration**

Zoe Marsden

*Folkart dog collars**

Sally Muir *Painting*

Gemma Rees *Mixed media*

Ramona Contrini

*Ceramic dog bowls**

Helen Fay *Etching**

Sophie Thurlow *Miniatures**

Joanna Osborne *Sculpture*

Simon Olley *Ceramics**

Robin Parker *Sculpture*

Lorraine Corrigan *Sculpture*

Nicola Wiehahn *Mixed media**

Katharine Pollen *Ceramics*

* new artist

Special events

(please see our website for details):

The Dog Photobooth
by **Alma Haser** – 7th May

On the Spot Dog Drawing
by **Sally Muir** – 22nd May

The Secret Dog Silent Auction,
over 75 dog postcards
by 50 artists, proceeds
shared between the Ukraine
Humanitarian Appeal and
Wild At Heart Foundation.

Bidding at the show and online,
auction closes 6pm Saturday
May 28th.

Orlando's Cafe will be serving
tea and cake

Weekdays by appointment

07841 015078
joannamosborne@gmail.com
www.thedogshowbrighton.com

HOUSE



11.00-18.00						
M	T	W	T	F	S	S
2	3	4	5	6	7	8
9	10	11	12	13	14	15
16	17	18	19	20	21	22
23	24	25	26	27	28	29

5 Hera at BHCW

**Brighton and Hove Wellbeing Centre,
18-19 Western Road, Hove BN3 1AE**

The HERA artists work across Brighton and online with people who live with long term health conditions, supported by Brighton and Hove City Council. This show explores the theme of 'Connection' in its many senses, using a variety of media from paint to text, music to digital. Every year we show work created by both artists and participants in HERA groups, exhibiting in the waiting room of Brighton Health and Wellbeing Centre. We look forward to welcoming you.



The HERA Peacock: Jude Heath Mark Johnson

01273 712175
contact@robinhoodhealth.org
www.brightonhealthandwellbeingcentre.co.uk/healing-arts/hera

COMMUNITY



08.30 - 12.15						
M	T	W	T	F	S	S
2	3	4	5	6	7	8
9	10	11	12	13	14	15
16	17	18	19	20	21	22
23	24	25	26	27	28	29

6 The Jewellery Workshop

52, Brunswick Street East (Workshop), Hove BN3 1AU



Papillon de Nuit: Imaginarium Atelier

Imaginarium Atelier fuses the worlds of traditional goldsmithing and art jewellery. By joining forces and sharing a different set of skills, the makers create sculptural pieces that feel timeless and one of a kind. The workshop is like a cabinet of curiosity where the jewellery, the tools of the trade and inspirations are displayed side by side. Discuss bespoke commissions directly with the makers and discover a range of precious jewellery, drawings and paintings.

**Sylvaine Frouin
Marek Machlowski**

01273 782220
info@imaginariumatelier.com
www.imaginariumatelier.com

STUDIO-OR-WORKSHOP



10.00-17.00						
M	T	W	T	F	S	S
2	3	4	5	6	7	8
9	10	11	12	13	14	15
16	17	18	19	20	21	22
23	24	25	26	27	28	29

7 Tony Owers

17 Lansdowne Mews, Farm Road, Hove BN3 1FW



Just as it is: Mixed media on board, 40x40cm, Tony Owers

Tony's paintings are inspired by the ordinary and the common place, such as hessian, cloth and packaging; the every day reality expressing the transience of all things.

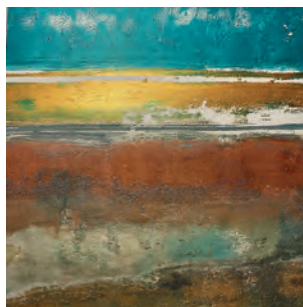
07970 613288
tony@tonyowers.com
tonyowers.com

STUDIO-OR-WORKSHOP

10.00-17.00						
M	T	W	T	F	S	S
2	3	4	5	6	7	8
9	10	11	12	13	14	15
16	17	18	19	20	21	22
23	24	25	26	27	28	29

8 5 Montpelier Place

5 Montpelier Place, Brighton BN1 3BF



Spring Beach Tide Lines - Monotype print, Sarah Mitchener

Sarah Mitchener
Paintings, monotypes, prints and cards
Kate Osborne
Paintings, prints and cards
Davina Colmer *Stone carving*
Jo Linney *Silver jewellery*
Bianca Williams *Textiles*

07759 998044
sarahmitchener@yahoo.co.uk
www.instagram.com/5_montpelier_place_aoh

HOUSE



Terry Guile *Silver jewellery*
Studio Shards *Fused glass*
Ember Vincent *Raku ceramics*
Little Sussex Candle Company
Candles
Sarus *Leather goods*
Brighton Cacao Company
Chocolatier

10.00-17.00						
M	T	W	T	F	S	S
2	3	4	5	6	7	8
9	10	11	12	13	14	15
16	17	18	19	20	21	22
23	24	25	26	27	28	29



The **Central Trail** is the heartbeat of the City. Taking you from Brighton Station into the vibrancy of the North Laine, navigating a path through the Lanes before settling you in a deckchair at the seafront where seagulls, ice cream and sea air clamour for attention. Pick up unique work from artists and collectives; treasures and keepsakes for your home or loved ones, or simply give yourself over to the day and enjoy a feast for the eyes and senses. The Central Trail spans works across photography, painting, sculpture, screen print, holistic art and more.

Travel information

Walking, Rail, Bus Central Trail is situated within easy walking distance of Brighton railway station, which is served well by trains, buses and taxis.

Car There are a number of car parks in the central area along with metered on street parking.

1 Sophie Wake @ Gallery 40

40 Gloucester Road, North Laine, Brighton BN1 4AQ



SOME OF US ARE HEADING TOWARDS A GIANT GLITTER WORLD. Sophie Wake

This year my solo show exhibits for one week only in this exciting North Laine gallery space.

Royal Academy exhibiting, winner of best Artists Open House, best Newcomer and AOH brochure cover artist, my work is inspired by spirituality and tea ceremony.

Expect original oil paintings on canvas, gouache works on paper, prints and cards for sale, plus a rare opportunity to experience ancient tree tea with my Tea Master everyday from 11 - 12.30pm.

07855 764413
hello@sophiewake.com
sophiewake.com

GALLERY



10.00-18.00						
M	T	W	T	F	S	S
2	3	4	5	6	7	8
9	10	11	12	13	14	15
16	17	18	19	20	21	22
23	24	25	26	27	28	29

2 AN ANCESTORS' JOURNEY

35 Queens Gardens, Brighton BN1 4AR



Queen's Gardens

An Ancestors' Journey: Dogus & Haniwas

Exhibition of tribal sculptures made by **Bruno Sibona**

Inspiration is drawn from Japanese prehistory, with influences from the Maori, Melanesian, Meso-American arts, and European Neolithic and Bronze Age cultures. Bruno also

perpetuates the 'Santons' figures tradition of Provence.

Storyteller/musician **Annie Sheppard** joins Bruno between 12-4, telling short stories that bring their journeys alive.

By purchasing one of these sculptures, you may well begin to share some of their adventures.

07377 231420
brunosibona@hotmail.com

HOUSE



11.00-17.00						
M	T	W	T	F	S	S
2	3	4	5	6	7	8
9	10	11	12	13	14	15
16	17	18	19	20	21	22
23	24	25	26	27	28	29

3 Tichborne Gallery

18 Tichborne Street, Brighton BN1 1UR



United 2020 in 187

Works by **Bert Irvin** and **Colin Day**.

Tichborne Gallery is in the centre of Brighton in a former Victorian ice house.

Colin met Bert at the Goldsmiths Painting School in Surrey Docks in 1972. The painters had

been moved away from the main college to a former Port Authority Weigh Station - which meant tutorials in the pub and a dodgy boiler.

Bert's Christmas card prints are featured in a celebration of abstraction.

07941 832933
colin4day@yahoo.co.uk
www.instagram.com/tichbornegallery/

HOUSE

12.00 - 17.00						
M	T	W	T	F	S	S
2	3	4	5	6	7	8
9	10	11	12	13	14	15
16	17	18	19	20	21	22
23	24	25	26	27	28	29

4 Sussex County Arts Club

3 Bond Street Cottages, Bond Street, Brighton BN1 1RP



Elaine M. MacGrogan

The Sussex County Arts Club's annual summer exhibition showcases artwork produced by club members in a variety of media, much of it created during some of the many sessions run throughout the year at the club.

We offer a variety of sessions for all abilities from beginners to professionals.

Please check our website for more details.

07708 870791
info@sussexcountyartsclub.co.uk
www.sussexcountyartsclub.co.uk

COMMUNITY



Sat 13.00-17.00 Sun 13.00 -17.00						
M	T	W	T	F	S	S
2	3	4	5	6	7	8
9	10	11	12	13	14	15
16	17	18	19	20	21	22
23	24	25	26	27	28	29

5 BouSham Gallery

14 Hanningtons Lane, Brighton BN1 1GS



BouSham Gallery Selection: BouSham Gallery Ltd

BouSham Gallery presents: Jewellery, original paintings, prints and cards. Sculpture, ceramics, textiles, macramé, vintage collectables, art glass, along side homeware, hand made beauty products, soaps and candles.

Clair Boubli and **Shyama Ruffell** are delighted to be showcasing over 17 outstanding local artists and makers. Combining mid-century collectables with our latest collections, we have curated our gallery to create a colourful and rich environment with our unique BouSham aesthetic.

This May we celebrate 40 years of Open House festival with unique imaginative window displays, which proudly feature work by two of AOH's very first original artists **Colin Ruffell** and **Fran Slade**.

07979 837677
shyamaruffell@me.com
www.instagram.com/boushamgallery/

GALLERY



11.00-18.00

M	T	W	T	F	S	S
2	3	4	5	6	7	8
9	10	11	12	13	14	15
16	17	18	19	20	21	22
23	24	25	26	27	28	29

6 The Stanley Road Store in The Lanes

3 Hanningtons Lane, Brighton BN1 1HJ



We have moved!
Always on the move and always exciting, this Open House, you will find us in our pop-up shop in The Lanes.

Jewellery, ceramics, lighting, prints and collage, clothing, soft furnishings, candles, bath

07931 224449
thestanleyroadstore@gmail.com
www.thestanleyroadstore.co.uk

COMMERCIAL-PREMISES



and beauty, sculpture, box art and more.

40 Carefully chosen artists, workshops, evening events and best yet... We will be open during the week too!

Do come and see us.

Mon-Thu 10.00-18.00, Fri-Sun 10.00-20.00

M	T	W	T	F	S	S
2	3	4	5	6	7	8
9	10	11	12	13	14	15
16	17	18	19	20	21	22
23	24	25	26	27	28	29

7 The Open Studio

168 Kings Road Arches, Brighton seafront, Brighton BN1 1NB



The Open Studios entrance. Selection of artists work. Open Studios artists

Nate Cordery *Painting*
Suzi Boseley *Ceramics*
Phillip Sugg *Mixed media*
Phil Dobson *Print making*
Louise Prentice *Illustration*
Zyg Jarzembowski *Photography*
Deborah Bennett *Painting*
Lubi Elfin *Textiles*

07833 220795
natecordery@googlemail.com
www.natecorderyartist.com

STUDIO-OR-WORKSHOP



Sanja Matkovic *Digital media*
Tom *Mixed media*
Charmaine Evans *Painting*
John Dunn *Ceramics*
Dominic Tivadar *Painting*
John Valcas *Drawing*
Val MacDonald *Ceramics*

10.00-18.00

M	T	W	T	F	S	S
2	3	4	5	6	7	8
9	10	11	12	13	14	15
16	17	18	19	20	21	22
23	24	25	26	27	28	29

8 Studio Greenhouse West Pier Trust

West Pier Centre, 103-105 King's Road Arches, Brighton BN1 2FN



Studio Greenhouse work ready for Artists Openhouse 2022 at the West Pier Trust

Seaside Art Studio Greenhouse 2022

Studio Greenhouse has teamed up with the **West Pier Trust** to create a seaside themed colourful and vibrant show. We are a creative people cooperative founded in 2006 based in the North Laine. We are thrilled to do our first ever group show. Expect sounds and colours of the sea, astrophysics, and affordable, contemporary prints and paintings. We are open everyday apart from Tuesdays. Love life, love art!

07946 38116

studiogreenhouseuk@gmail.com

www.instagram.com/studiogreenhouseuk/

EDUCATIONAL-INSTITUTION



11.00-18.00

M	T	W	T	F	S	S
2	3	4	5	6	7	8
9	10	11	12	13	14	15
16	17	18	19	20	21	22
23	24	25	26	27	28	29

9 British Airways i360

British Airways i360 Viewing Tower,
Lower Kings Road, Brighton BN1 2LN



British Airways i360

Visit us in our lower, beach level giftshop and events space throughout the month of May and discover the works of local artists:

Hannah Thompson

Gill Copeland

Lucy Delano

Rima Stankute

Samantha Hall

Ant Fox and others.

03337 720360

adam.gillick@britishairwaysi360.com

www.britishairwaysi360.co.uk

COMMERCIAL-PREMISES



Come along and join us this year for the 40th Anniversary of the AOH at the venue with the best views in Brighton...

For further scheduling and private view dates visit our website.

Private View Sat 7th May from 7pm

Exhibition open until May 31st.

11.00-19.00

M	T	W	T	F	S	S
2	3	4	5	6	7	8
9	10	11	12	13	14	15
16	17	18	19	20	21	22
23	24	25	26	27	28	29

FRAME FACTORY

High quality contemporary
framing & giclée printing

Framing

Bespoke framing

Exhibition framing

Mount cutting

Canvas stretching

Box framing

Friendly professional advice

Printing

Large format printing

Printing onto canvas

Limited edition giclée printing

01273 609207

www.frame-factory.co.uk

info@frame-factory.co.uk

7 Sydney Street, Brighton, East Sussex,
BN1 4EN



Punk on PAPER

**ORIGINAL MUSIC
POSTERS**

SEX PISTOLS

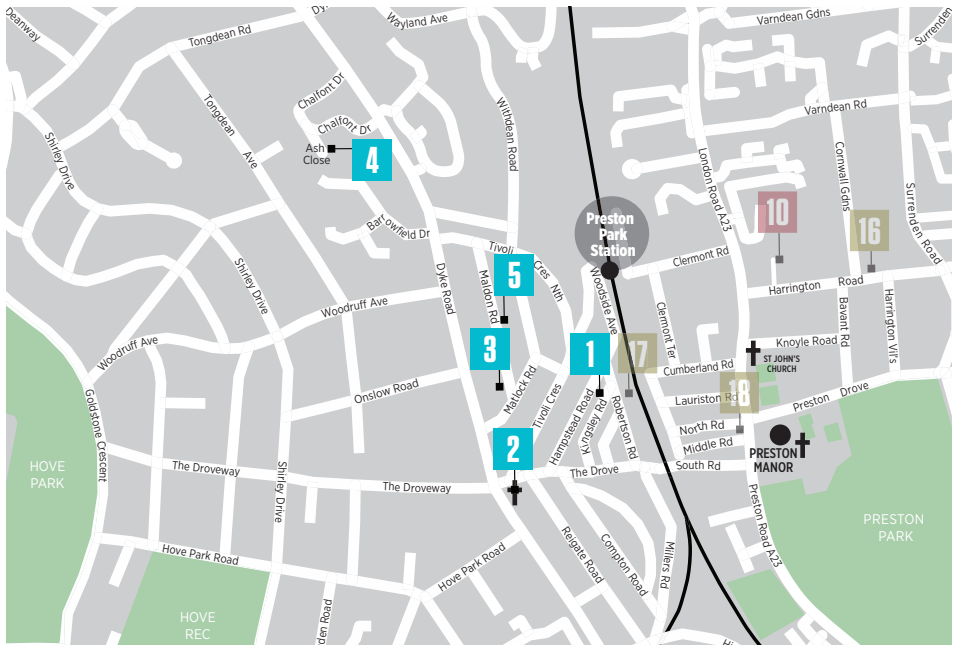
THE CLASH

DAVID BOWIE

THE SMITHS...

PUNKONPAPER.COM

Dyke Road



A small but perfectly formed trail. Welcome to **Dyke Road Arts**, where you'll find a friendly ambiance and beautiful work by an exciting variety of talented artists and makers. Our compact trail creates an easily walkable morning or afternoon's visit. Venues are all within a few minutes of each other on foot, with easy parking near all venues.

www.dykeroadarts.com

Travel Information

Walking Please ask for directions at any venue. The houses are all close to each other.

Bus the number 27 serves Dyke Rd every 15 minutes from central Brighton and Brighton Station. On fine days the 77 open top bus also follows this route along Dyke Rd. Ask for Church of the Good Shepherd. Buses 5 & 5A serve Preston Rd ask for Preston Park Station.

Park & Ride on the 27 bus is available at Withdean Stadium.

Rail Preston Park station on the London to Brighton line serves the trail.

Car Parking is free in Maldon Road, Matlock Road, and parts of Dyke Road at weekends, making it easy for you to enjoy a relaxed wander along the whole trail without having to move your car or pay for parking – please check individual road parking signs before you park.

1 Kingsley Road House

12 Kingsley Road, Brighton BN1 5NH



Magic Jam, Nevine Fathy

Open for the first time, featuring fabulous dynamic paintings, drawings, jewellery, glass, metal work and more over two floors and garden. Join us for art, refreshments, homemade cakes and sparkling conversations. You might also catch a painting demo or jeweller making in action.

07553 041861
nevine.fathy@gmail.com
www.nevinefathy.com

HOUSE



11.00 - 16.30

M	T	W	T	F	S	S
2	3	4	5	6	7	8
9	10	11	12	13	14	15
16	17	18	19	20	21	22
23	24	25	26	27	28	29

3 For the Man I Love

13 Maldon Road, Brighton BN1 5BD



For the Man I Love

Amy Glass
Brighton Streets Photography
From Brighton with Love
Mixed media
Lauren Illustration
Linda Chocolates
Marion Glass
Mr Beaujangles Jewellery

Simon Illustration
Ritz Illustration
Lucy Other
Hannah Mixed media
Linescapes Illustration
Camelot Soaps Other
Little Sussex Candles Candles
Corrina Soft toys

07736 656049
info@forthemanilove.com
www.forthemanilove.com

HOUSE



11.00-18.00

M	T	W	T	F	S	S
2	3	4	5	6	7	8
9	10	11	12	13	14	15
16	17	18	19	20	21	22
23	24	25	26	27	28	29

2 Art@GoodShepherd

Church of Good Shepherd, 272 Dyke Road, Brighton BN1 5AE



Sketchbook: Stepping@heep Pen Lane David Diplock

'Colourful array,
All are great, some are small,
A host of mediums to explore.
Meet the artists, see how they work
Capturing Nature's glory
In the 1922 Church.'
Ceramics: Boshop Green Pottery,
Filipe Brown and James Foley
Digital Art: Lucie Jones

Mixed Media: Penny Hart-Davies
and Suzi Lowe
Pastels: Susana Brown
Painting: JD Liebe, Joanne
Sharpe and Katarzyna Aekbote
Photography: Melvyn Walmsley
Printmaking: Allison Murphy
Sketch Book Art: David Diplock
'Fabulous work. So glad I came.'
Visitor 2021

01273 553747
rydonallison@icloud.com
Instagram: art_at_the_Good_Shepherd

COMMUNITY

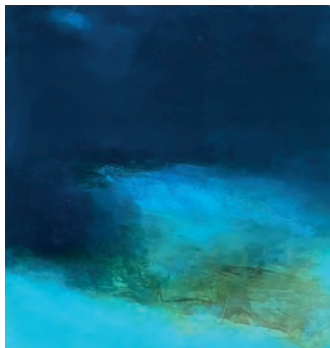


Sat 14.30-17.30 Sun 12.30-17.30

M	T	W	T	F	S	S
2	3	4	5	6	7	8
9	10	11	12	13	14	15
16	17	18	19	20	21	22
23	24	25	26	27	28	29

4 Maroulla Simmonds

1 Ash Close, Hove BN3 6QS



Painted in oil on stretched panel. Ash Close, Hove, Maroulla Simmonds

Contemporary abstracted oil paintings with ethereal ocean theme. Inspired by the seas and waters around the world to give a feeling of serenity and mystery to the viewer. Painted in oils giving a luminous quality that compliments the subject theme perfectly. Current series of paintings inspired by the mystical deep Caribbean sea.
First Artists Open House

07415 518502
maroullasimmonds@hotmail.co.uk
www.maroullasimmonds.com

HOUSE



11.00-17.00

M	T	W	T	F	S	S
2	3	4	5	6	7	8
9	10	11	12	13	14	15
16	17	18	19	20	21	22
23	24	25	26	27	28	29

5 The Trojan House

26 Maldon Road, Brighton BN1 5BE



Seal and Beach - Cottage art of painting on canvas, Troy Ohlson



The Trojan house



Everesting Jewel Flowers, Troy Ohlson

Troy of the Trojan House is delighted to invite you to her *20th Anniversary Celebration Artist's Open House*. As always you'll find gorgeous art and lovely handmade crafts in a relaxed home setting.

Enjoy a warm welcome and a complimentary glass or two of the legendary Pete's Pimms while browsing work by your favourite Trojan House artists and makers.

View Troy's work where it's created in her printing studio - peek into Troy's little glass-roofed painting studio where the magic and the splashes happen.

We so look forward to seeing our lovely visitors this May. We've missed you all!

Troy Ohlson *Painting and printmaking*

Copper Creatures *Hammered and twisted sculpture*

Treasures by Troy *Filigree silver jewellery*

Wild Wonder Ceramics *Animal sculpture*

Primordial Soup *Art sock creatures*

J David Bennett *Colourful pop prints*

Inspired by the Sea *Needle felting*

Belinda *Textile creations*

Chapman's Aromatics *Essential oil delights*

Tema Jane *Travels with my camera*

Glass Follies *Stained glass*

Hoarder and Maker *Cutlery and face masks*

Ceramics and Succulents *Pots and plants*

Jewel Flowers *Gem, button and bead copper sculpture*

Free parking on weekends

07885 911049

troyohlsonart@gmail.com

www.trojanhouse.com

HOUSE



11.00-18.00						
M	T	W	T	F	S	S
2	3	4	5	6	7	8
9	10	11	12	13	14	15
16	17	18	19	20	21	22
23	24	25	26	27	28	29



Heaping - Copper Creatures sculpture, Troy Ohlson



Art to feed the senses
this summer

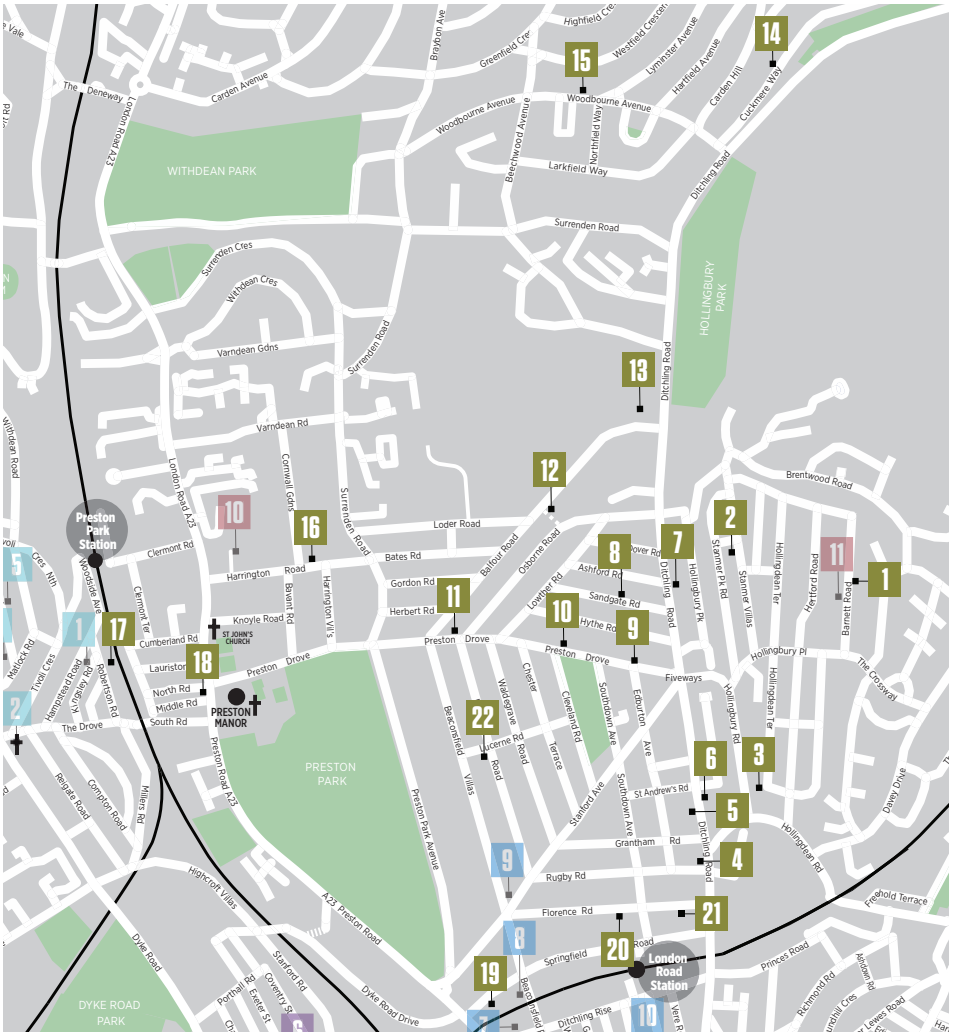
8 July – 18 September

Nourish

Wakehurst

For details visit
kew.org/wakehurst

Royal Botanic Gardens
Kew



Fiveways celebrates 41 years of opening with 21 venues, including two new houses that extend our trail north to Hollingbury. As always, we have a wonderful range of houses and businesses showing work of consistently high quality, including a special display of Fiveways artists' pieces in St Augustine's Church on Stanford Avenue. Starling Studio is new to us this year, and together with Coachwerks and Robertson Road Studios, host a wide variety of work. Downs *Make do and Mend* and Vardean schools continue their tradition of presenting inspiring work by young people. And for refreshments while visiting, don't forget the excellent local pubs and cafés, several of whom have kindly sponsored us.

www.fivewaysartists.co.uk

Beaumonts
Found Cafe
Brighton Carpets
Pet Shed
David & Co
Fiveways Fruits
Wigwam
The Store
The Makers' Fair
Melissa's Café
Open House Pub
Roger Mason Framing

Cubitt & West
Bowley & Gallagher
Quaff Wine
Barfields Butchers
Living at Fiveways
Tilt
The Flour Pot
The Maestro/Duncan Hopper
Woodbourne Coffee House
Surrenden Dental Practice
The Cleveland Arms
Frame Factory

1 Printhouse

54 Barnett Road, Brighton BN1 7GH



After the Chalk Fall at Sunset Point, Jude Clynick

Exhibiting a variety of imagery in a wide range of print making techniques, with printing demonstrations on the C19th press taking place during the Festival.

This will be Printhouse's final year – catch us while you can!

Jude Clynick *Wood engraving and collagraphs*

Karen Potter *Lithographs, etched and cut lino*

Jill Vigus *Etching, artist books and screen printing*

Carol Parker *Cut and etched lino and assemblages*

Julie Clark *Monotypes and etching*

Stuart Bullen *Various printmaking techniques on handmade paper*

01273 554995

j.clynick@btinternet.com

Instagram: 5waysprinthouse

HOUSE



11.00 - 17.00						
M	T	W	T	F	S	S
2	3	4	5	6	7	8
9	10	11	12	13	14	15
16	17	18	19	20	21	22
23	24	25	26	27	28	29

2 The Ceramic House

75 Stanmer Villas, Brighton BN1 7HN



Naomi Danes, Kerai Potloms

Peripheries is the first event in *EDGES*, an ambitious international ceramic and sound art project between Estonia, Ireland and the UK that will continue until spring 2024.

The Ceramic House hosts an international residency; two Irish sound artists collaborate with

two Estonian ceramic artists, and their work will be on display, accompanied by an exhibition of contemporary ceramics by leading Estonian artists.

The artworks are displayed against the unique background of **Kay Aplin's** architectural ceramics.

07803 161313

kay@theceramicthouse.co.uk

www.theceramicthouse.co.uk

HOUSE



11.00 - 17.00						
M	T	W	T	F	S	S
2	3	4	5	6	7	8
9	10	11	12	13	14	15
16	17	18	19	20	21	22
23	24	25	26	27	28	29

3 Coachwerks Open Studios

19a Hollingdean Terrace, Brighton BN1 7HB



Branding serving spoons handcarved from hawthorn, Annie Slack

Paul Hounsell *Copper art*

Annie Slack *Hand carved spoons*

Louise Kelly *Ceramics*

Heather Parr *Print making*

Gill Harvey *of Chalk and Flint*

Ceramics

Made in Shed

Photography and assemblage

Sal Goodyer *Textiles*

Rose Honey *Jewellery*

Natasha Cawley *Ceramics*

Chris Cain *Metalwork*

Rachel Entwistle *Pottery*

Orangecat *Ceramic bead maker*



Turquoise mugs, Rachel Entwistle

07931 996666

hello@coachwerks.co.uk

www.coachwerks.co.uk

STUDIO-OR-WORKSHOP



11.00 - 17.00						
M	T	W	T	F	S	S
2	3	4	5	6	7	8
9	10	11	12	13	14	15
16	17	18	19	20	21	22
23	24	25	26	27	28	29

4 Downs Junior School

Ditchling Road, Rugby Road, Brighton BN1 6ED



We invited children from primary schools to enter a city-wide art competition. All entries will be on display, and visitors will be asked to help choose the winning artwork.

On each open day we will be hosting local artists and makers, and on Saturdays (12-3pm) will be offering drop-in screen printing activities for all ages.

Visitors can also explore our original WW2 air raid shelter and enjoy free entertainment and activities.

takeshelter@downsjun.brighton-hove.

sch.uk

www.takeshelter.org.uk

EDUCATIONAL-INSTITUTION

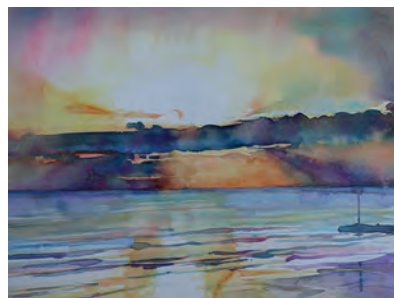


10.00 - 16.00

M	T	W	T	F	S	S
2	3	4	5	6	7	8
9	10	11	12	13	14	15
16	17	18	19	20	21	22
23	24	25	26	27	28	29

6 Art at 202 – Skies, Seas and Trees

202 Ditchling Road, Brighton BN1 6JE



Left: Boys' Polly Raynes

We are delighted to be open again, and excited to exhibit a fantastic new collection of art and sculpture by new and familiar artists to this venue, for both home and garden.

Polly Raynes Paintings and prints
Chris Brooks Metal sculpture
Annie McMullan Glasswork
Charlie High Jewellery
David Bradford Wood sculpture
Rex Matthews Painting
Claire Morris Stone sculpture
Sally Rose Leather work

01273 555007

polly.raynes.artist@icloud.com

HOUSE



11.00-17.00

M	T	W	T	F	S	S
2	3	4	5	6	7	8
9	10	11	12	13	14	15
16	17	18	19	20	21	22
23	24	25	26	27	28	29

5 Upfunt House

177 Ditchling Road, Brighton BN1 6JB



Scots Porridge: Patrick Kennedy

After a break of three years, Upfunt House is again bringing you a beautifully curated collection of artists' work. Don't miss this chance to view the latest work from:

Lisa Hamilton

Jewellery

Helen Brown

Woodcuts

Cath Laffan

Jewellery

Cath Bristow

Screen prints

Anna Thomson

Ceramics

Si Uwins

Garden sculpture

Patrick Kennedy

Lino prints

Samantha Stas

Whimsical textiles

and framed collages with a vintage feel

01273 551839

patrick@upfunt.com

www.upfunt.com

HOUSE

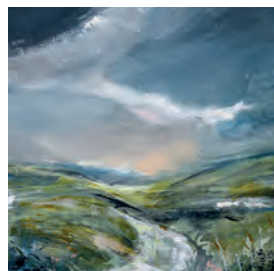


11.00 - 17.00

M	T	W	T	F	S	S
2	3	4	5	6	7	8
9	10	11	12	13	14	15
16	17	18	19	20	21	22
23	24	25	26	27	28	29

7 358

358 Ditchling Road, Brighton BN1 6JG



South Downs Way: Kitty McCurdy

Angela Harrison Painting
Lauren Hayes Paper art
Will Spankie Sculpture
Jing Wang
 Brush painting and calligraphy
Hilary Phillips Textiles
Si Uwins Sculpture
Jessica Jordan Ceramics
Kate Iles Collage
Dave Stephens Card sculpture

Caroline Smith Painting
Oriana Evans Jewellery
Clare Buckle Painting
Karen Potter Print making
Susie Ware Handmade clothing
Kitty McCurdy Painting
Ben Nazarko Photography
Susan Sainsbury Graphic novels
Nick Orsborn
 Jewellery and painting

01273 887591

lauren-hayes@outlook.com

www.instagram.com/358ditchlingrd/

HOUSE



11.00-17.00

M	T	W	T	F	S	S
2	3	4	5	6	7	8
9	10	11	12	13	14	15
16	17	18	19	20	21	22
23	24	25	26	27	28	29

8 61...House and Studio

61 Sandgate Road, Brighton BN1 6JP



Sculpture Frances Doherty in M Photography

We look forward to welcoming you back to our eclectic house with a diverse range of work. You'll also be able to see some demo's in the studio and see how some of the work is made.

Frances Doherty
Organic ceramic sculpture

07854 541190
frances.doherty@gmail.com
www.francesdoherty.co.uk

HOUSE

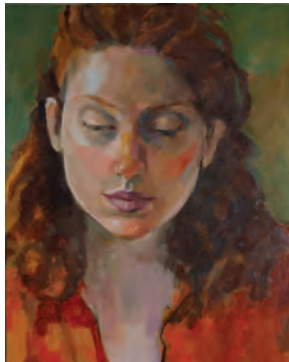


Jane Denman
Colourful figurative painting
Makiko Konishi
Origami with a story
Jack Durling
Ceramic animal sculptures
Alison Baxter
Art jewellery and textiles

11.00 - 17.00						
M	T	W	T	F	S	S
2	3	4	5	6	7	8
9	10	11	12	13	14	15
16	17	18	19	20	21	22
23	24	25	26	27	28	29

9 Jane Palmer & Friends

239 Preston Drive, Brighton BN1 6FL



Immie in Orange Dress: Jane Palmer

Our third open house, with a new collection of contemporary fine art. Jane shows her latest portraits, landscapes and still life paintings and drawings. Stef, Nigel, Tan, Pam and Lucy present their paintings, ceramics and sculptures.

Meet us all on our website and see our videos there before your visit. Commissions welcomed!

Nigel Hunter *Sculpture*
Stef Hunter *Ceramics*
Lucy Bristow *Painting*
Pam Glew
Mixed media
Tan Kingston *Painting*
Jane Palmer *Painting*

07710 710766
palmer.jane1963@gmail.com
janepalmerbrighton.co.uk/open-house/

HOUSE



11.00-17.00						
M	T	W	T	F	S	S
2	3	4	5	6	7	8
9	10	11	12	13	14	15
16	17	18	19	20	21	22
23	24	25	26	27	28	29

10 One-Six-Nine

169 Preston Drive, Brighton BN1 6FN



Conner Hiroko Lewis

Hiroko proudly presents another exciting curation of top quality fine art and craft, featuring new faces and old friends. Don't miss it!

Private appointments available upon request.

Hiroko Lewis *Painting*
Marco Crivello *Mixed media*
David Storey *Painting*
Jenny Turtill *Sculpture*

01273 508651
art@onesixnine.co.uk
onesixnine.co.uk

HOUSE



Eve Claire Taylor *Cloisonné*
Tom Peterson *Ceramics*
Dona Diani *Jewellery*
Marta Ptaszkiewicz *Painting*
Annie Cross *Printmaking*
June Frickleton *Painting*
Patrick O'Donnell *Painting*
Jim Mayor *Glass*
Fleur Grenier *Metalwork*
Bryony Rimmington Jones *Ceramics*

11.00 - 17.30						
M	T	W	T	F	S	S
2	3	4	5	6	7	8
9	10	11	12	13	14	15
16	17	18	19	20	21	22
23	24	25	26	27	28	29

11 The Nature House

113 Preston Drive, Brighton BN1 6EW



Bellevue The Humanist

Welcome to The Nature House!
Ellie Hipkin, textile artist, is opening her home for the second year, along with 10 guest artists. All work is inspired by nature, through organic form, local landscapes and textures.
Ellie Hipkin *Textile artist*
Botanical Expression *Glass*
Lizzie Kershaw *Jewellery*

07803 000901
ellie@elliehipkinart.com
elliehipkinart.com/

HOUSE



Jan Irvine *Jewellery*
Dani Vannucchi *Jewellery*
Abby Martin *Sculpture*
Lugna *Home fragrances*
Jo Hathaway
Painting and encaustic artworks
Matt Goddard *Photography*
Sarah Rickard *Ceramics*
Chris Murphy *Ceramics*

11.00-17.00						
M	T	W	T	F	S	S
2	3	4	5	6	7	8
9	10	11	12	13	14	15
16	17	18	19	20	21	22
23	24	25	26	27	28	29

12 The Hidden House

142 Balfour Road, Brighton BN1 6NE



Holly M. Steinhilber

Deb Rae Smith *Print making*
Sophie Hulf *Painting*
Sakura Hocheggar *Painting*
Amanda Doughty *Jewellery*
Nicki Tarr *Furniture*
Holly M Atelier *Leather work*
Angela Evans *Ceramics*
 (Workshops available – please see artist's social media/website)
Sue Hurman *Sculpture*
Bob and Eve *Textiles*

Sue Tinkler *Glass*
Lucky Stitch *Textiles*
Louise Kelly *Ceramics*
Sarah Gamble *Print making*
Sam Wilson *Metalwork*
Katie Ward *Mixed media*
David Price *Sculpture*
Denise Harrison *Painting*
 (Workshops available – please see artist's social media/website)
Annie McMullan *Glass*

07792 250887
 kateibrett@yahoo.co.uk
 Instagram – the_hidden_house_at_142

HOUSE



11.00 – 17.00							
M	T	W	T	F	S	S	
2	3	4	5	6	7	8	
9	10	11	12	13	14	15	
16	17	18	19	20	21	22	
23	24	25	26	27	28	29	

13 Varndean School

Balfour Road, Brighton BN1 6NP



Holly M. Steinhilber

Varndean School is delighted to be exhibiting once again as part of the Fiveways trail. Featuring GCSE work from Year 11 students, this is a fantastic opportunity to come and see the stunning ceramics – recently rated an Area

of Excellence by education charity Challenge Partners – from the next generation of talented artists. In addition, a wide range of mixed media fine art, sketchbooks and work from Design Technology students will be on display.

Open Saturday 21st May only.

01273 561281
 marketing@varndean.co.uk
 www.varndean.co.uk

EDUCATIONAL-INSTITUTION



10.30 – 16.00							
M	T	W	T	F	S	S	
2	3	4	5	6	7	8	
9	10	11	12	13	14	15	
16	17	18	19	20	21	22	
23	24	25	26	27	28	29	

14 Patch Art @ 27 Cuckmere Way

27 Cuckmere Way, Brighton BN1 8GA



Alan Patch



Alan Patch

Alan Patch is an established artist and has exhibited before in previous Open House trails. This year Alan welcomes you to his own Open House and garden studio.

The exhibition includes mixed media, oil on canvas and 3D abstract landscapes.

There will be a warm welcome with tea, coffee, cake and fizz.

Alan Patch *Mixed media*

07796 094760
 patchcarpentry@yahoo.co.uk
 patchart_mustang

HOUSE



10.00 – 17.00							
M	T	W	T	F	S	S	
2	3	4	5	6	7	8	
9	10	11	12	13	14	15	
16	17	18	19	20	21	22	
23	24	25	26	27	28	29	

15 Studio 87

87 Woodbourne Avenue, Brighton BN1 8EJ

Local Artists **Carolyn Nicholls** and **Linda Church** offer you a warm welcome to our first Open House, with a range of exciting art in oils, watercolour and mixed media. All set in a stunning garden and a spectacular view of the South Downs National Park. Paintings in the outside studio and summer house, tea, coffee and home made cake in the garden.

As lovers of our precious and fragile landscape, we will be joined by The Countryside Charity, CPRE Sussex, who care for our green and open spaces so we can all continue to relax and enjoy our local countryside.

Still life, portraiture, landscape, impressionist and abstract – it's all there in our wealth of luscious modern art work.

Carolyn and Linda are delighted to welcome you to our first joint exhibition at Studio 87.

Carolyn Nicholls *Painting*

Linda Church *Painting*



Purple Pansies: Carolyn Nicholls



Portrait: Linda Church

07429 549670
carolyn.nicholls@me.com
www.carolynnichollsartist.co.uk

STUDIO-OR-WORKSHOP



11.00-17.00						
M	T	W	T	F	S	S
2	3	4	5	6	7	8
9	10	11	12	13	14	15
16	17	18	19	20	21	22
23	24	25	26	27	28	29

16 Art at 23

23 Harrington Road, Brighton BN1 6RF



Flemish Street: Martin Bentley

Welcome to our 10th Open House, this year again we are exhibiting artworks by a group of inspiring artists.

Martin Bentley *Oil paintings*

Nicole Koenig *Oil paintings*

Jane Jukes *Watercolours*

01273 566110
mariamhannah@yahoo.co.uk
www.facebook.com/artattwentythree

HOUSE



Christa Hook
Watercolour artist

Anne French
Contemporary decoupage

Elizabeth Kemp *Leaded glass*

Marie-Anne Ganpatsingh

Mixed media paintings

11.00-17.00						
M	T	W	T	F	S	S
2	3	4	5	6	7	8
9	10	11	12	13	14	15
16	17	18	19	20	21	22
23	24	25	26	27	28	29

17 Robertson Yard Studios

42A Robertson Road, Brighton BN1 5NJ



Robertson Yard Studios: Jon Mills

Everything from ceramics, glass, gemstone-carving and painting, to clock-making, taxidermy, jewellery and metalwork, with invited film artists.

07793 321039
jon@metajon.com
www.robertsonyard.co.uk

STUDIO-AND-WORKSHOP



11.00-17.00						
M	T	W	T	F	S	S
2	3	4	5	6	7	8
9	10	11	12	13	14	15
16	17	18	19	20	21	22
23	24	25	26	27	28	29

18 Bowley & Gallagher

209 Preston Road, Brighton BN1 6SA

An opportunity to see a selection of local artists coming together to showcase their talents in this bright and modern space.

Lume Lighting *Lighting*

From Brighton with love *Textiles*

Holly Swain *Illustration*

Diane Rogers *Textiles*

Trisha Keith *Painting (runner up Gemini Print's AOH Artist of the Year 2021)*

Throw to Fire *Ceramics*

Satarupa Bradley *Jewellery*



Rock Pool Drama with Seaweed: Diane Rogers

Heart Link necklace: Satarupa Bradley



Three Pots: Throw to Fire



Blue Lake (detail): Trisha Keith

01273 934899
funerals@bowleyandgallagher.co.uk
www.bowleyandgallagher.co.uk

COMMERCIAL-PREMISES



10.00 - 17.00

M	T	W	T	F	S	S
2	3	4	5	6	7	8
9	10	11	12	13	14	15
16	17	18	19	20	21	22
23	24	25	26	27	28	29

19 Tatamigrams | Rod Clark

12A Springfield Road, Brighton BN1 6DA



Tatamigrams © Rod Clark

Tatami (畳) mats have an aspect ratio of 2:1. My works result from diagonally dividing this shape. TG System is a playful generative image-making which limits the main forms but allows all and any variation within them of recursion, proportion and colour.

07760 503179
157@mistral.co.uk
tatamigram.com

HOUSE



I explore geometry and hence pattern found by mathematical subdivision of simple shapes. The designs form a growing collection of paintings, prints and objects in a range of sizes, styles, forms and finishes.

10.00 - 17.00							
M	T	W	T	F	S	S	
2	3	4	5	6	7	8	
9	10	11	12	13	14	15	
16	17	18	19	20	21	22	
23	24	25	26	27	28	29	

20 Emily Boo & Friends @44

44 Florence Road, Brighton BN1 6DJ



Parker Knoll 747, Emily Beaumont

Alongside our wonderful array of artists this year, for the first time, we will be running some exciting workshops. See our website for details.

07971 834872
em@myupholstery.co.uk
www.emilyboopholstery.co.uk

HOUSE



Furniture
Emily Beaumont
Ceramics
Yolande Beer, Caroline Chilton Hellyer and Kate McMinnies
Jewellery
Natasha Caughey, Dani Ellingham, Katherine Lawrie and Rock and Petal
Mixed Media
Frances Bloomfield and Polly Finch
Painting **Jo Hathaway**
Print making
Janet Brooke, Jane Sampson and Haydn Stride
Photography
Lyn Holly Coorg
Sculpture **Bryan Ellery**
Textiles **Jenny Hughes and Stokely Textiles**

11.00 - 17.00							
M	T	W	T	F	S	S	
2	3	4	5	6	7	8	
9	10	11	12	13	14	15	
16	17	18	19	20	21	22	
23	24	25	26	27	28	29	

21 Delicious Delights

60 Florence Road, Brighton BN1 6DJ



Swimming Baths Kate Lulham

Welcome to the art feast on show at Delicious Delights, and when you fancy a break, come sit in the garden with cake and a spot of liquid refreshment! Relax...

For May 2022, let me introduce our artists:

Barbara Lavery *Painting*
Andrew Howarth *Print making*

Andrea Eserin *Jewellery*
Fiona Richardson *Print making*
Sally Goodyer *Textiles*
Anna Tilson *Mosaic*
Shark Alley *Jewellery*
Gill Varle *Mixed media*
Rich Simpson *Illustration*
Hania Mackinnon *Jewellery*
Kate Lulham *Metalwork*

11.00 - 17.00							
M	T	W	T	F	S	S	
2	3	4	5	6	7	8	
9	10	11	12	13	14	15	
16	17	18	19	20	21	22	
23	24	25	26	27	28	29	

07772 035752
katelulham@mac.com
www.katelulham.co.uk

HOUSE



22 Starling Studio

107 Havelock Road, Brighton BN1 6GL



Ceramic Drunkie: Adam

Make it 11 with ceramics by **Adam** from Pottery Throwdown will be taking over the studio for the week of 1st - 8th May. For the following two weekends, 14th & 15th / 21st & 22nd, Starling Studio curate their own AOH.

Adam Ceramic
Make it 11 Pop-up
Dan Mackey
Make it 11 Pop-up
Eve Gnoyke *Ceramics*
Daizi-May
Abstract landscapes
Bebe Bird *Ceramics*
John Haywood
Watercolour paintings
Sam Beck *Ink, painting, mixed media and prints*
Laura Darling
Oil paintings
HelenJHolroyd
Print making
Samantha English
Jewellery Jewellery
Lume Lighting
Handmade lampshades
Scarlett Sky
Leather bags and accessories
Mandy Atkinson *Jewellery*
April March Jewellery
Jewellery

info@brighton-starling.com
brighton-starling.com/home
Instagram: starlingstudio_brighton

STUDIO-OR-WORKSHOP



11.00-17.00, (*Make it 11: 11.30-16.00)							
M	T	W	T	F	S	S	
2	3	4	5	6	7	8	
9	10	11	12	13	14	15	
16	17	18	19	20	21	22	
23	24	25	26	27	28	29	



**GUS & GLEN'S
KEYBOARD
KARAOKE**

- **Choose from 250+ Songs in our songbook**
- **Lyrics on iPad**
- **Sing live with award-winning pianist**



SCAN FOR



Artists Open House Sponsors & Print Partner 2022

From creative design through to print and mailing solutions. For nearly 50 years the **Gemini Print Group** continues to serve businesses UK wide.

Green Leaf award winners 2020 for our dedication to Planet Positive Printing.

Drop in for coffee, call us on **01273 464 884** or email us at **hello@gemini-print.co.uk** to see how we could help you.



"Quote **AOH21** to receive your special discount"



Gemini Print Group




BRIGHTON SPIEGELTENT 2022

6 MAY - 5 JUNE
THE OLD STEINE BRIGHTON BN1 1GY

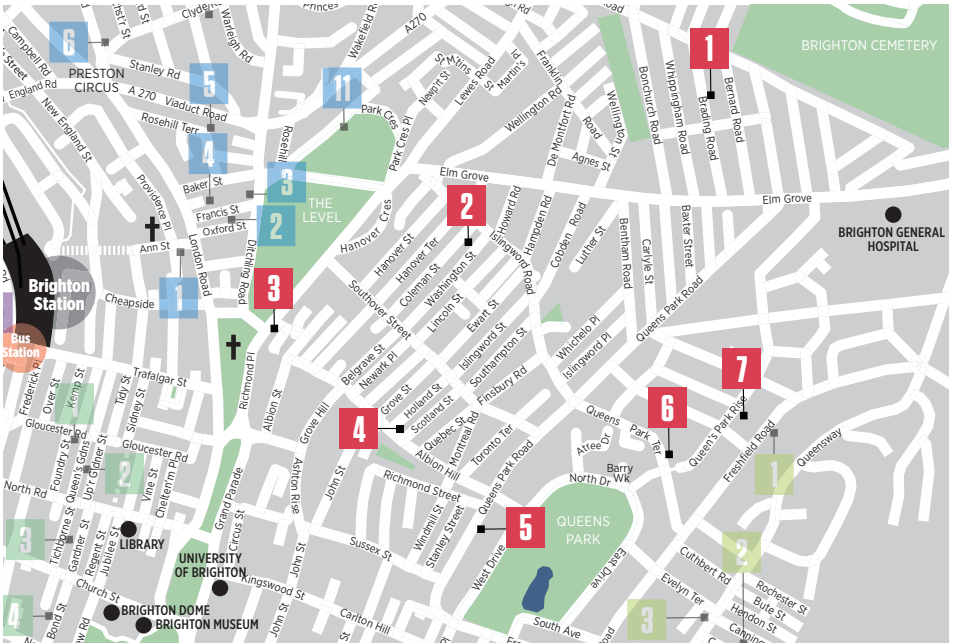
CAMILLE O'SULLIVAN
JOE BLACK - RAILED
HERBIE'S JAZZ BREAKFAST
THE CRAZY WORLD OF ARTHUR BROWN
PREHYSTERICAL - SASSY! 2.0
SPIEGELCIRCUS - THE ODDITORIUM
NEON MOON ELECTRIC RODEO CIRCUS
THE REVOLVER REVUE - CABARET BOHEME
THE GIANT BALLOON SHOW - TOUGHER THAN THE TRAIN


and loads more!



 [brightonspiegeltent](https://www.instagram.com/brightonspiegeltent)   [bspiegeltent](https://twitter.com/bspiegeltent)

www.BRIGHTONSPIEGELTENT.com



 You are cordially invited to take a wander around delightful **Hanover**. Brighton's colourful and thriving artistic community. The rain-bow-hued houses of Hanover and its surrounding streets are bursting with lively local businesses, great coffee shops and pubs for you to lunch at, plus artistic talent aplenty.

We have some exciting new venues opening their doors for the first time this year along with some more experienced exhibitors, including last year's cover star Becky Blair and the return of Phoenix Art Space opening their studios.

There will be an eclectic mix of design, fine art and crafts to suit all tastes, as well as delicious refreshments. So come along and make a day of it!

www.instagram.com/hanoverartstrail

Travel Information

Walking The Hanover Arts Trail is easily traversable on foot but it does involve some steep hills!

Train We are just a short 10 minute walk from Brighton mainline station, just walk down Trafalgar Street and cross over Grand Parade – we are the hilly district you see ahead of you.

Car Pay and display parking is available on most streets in Hanover.

Bus Many buses stop outside St Peter's Church which is a short walk away, the 23 and 18 run along Queens Park Road and the 37B comes up Southover Street.

Sponsors

Bav's Shop
www.instagram.com/bavsshop
Fern & Pine Garden Design
www.fernandpine.com
Hanover Homes
www.hanoverhomes.net
Haus on The Hill
www.hausonthehill.pub
Q Estate Agents
www.qsalesandlettings.co.uk
Starfish & Coffee
www.starfishandcoffee.cafe
Wheeler's Estate Agents
www.wheelersestateagents.co.uk

1 Becky Blair and Friends

66 Brading Road, Brighton BN2 3PD



Domestic Collection Pottery by Rachel Entwistle and Becky Blair (photo: Hugh Fox)

After last year's amazing response to our first Open House and being shortlisted for the Best Open House Award 2021, I am very excited to be opening our home for a second year. Artists **Becky Blair, Maria Tilyard, Annie Slack** and **Rachel Entwistle** will be returning. We will also have the captivating mobile sculptures by **Claire Knill, Laila Poppy Laurel's** award winning wood design and the playfully surreal sculptural works of **Amy Douglas**.

Alongside this beautiful exhibition we will be running Workshops and Demos. We are also very lucky to be welcoming **Emma Eardley** into the gang with her Pop Up Cafe selling refreshments in our garden! Each weekend we will be offering up different events so please check the AOH website Events page or my Instagram page to find details of what's on and how to book a place on the Workshops. Free on-street parking available.



Midnight's Summer by Becky Blair (photo: Hugh Fox)

07729 034158

becky@beckyblairartist.co.uk
instagram @beckyblairartist

HOUSE



11.00-17.00

M	T	W	T	F	S	S
2	3	4	5	6	7	8
9	10	11	12	13	14	15
16	17	18	19	20	21	22
23	24	25	26	27	28	29

2 Yvonne Coomber & Mike Boyer

57 Washington Street, Brighton BN2 9SR



My Beautiful Love Yvonne Coomber

Yvonne Coomber *Painting*

Internationally renowned artist Yvonne Coomber creates a joyful dance around the canvas. Paintings that celebrate wild places and wild hearts, rainbows of colour saturated in love. Oil paintings, prints and hand embellished printed canvases. A must see!

Mike Boyer *Painting*

Narrative based oil paintings. Dreamlike and evocative, full of the sparks of life; I try to capture fleeting moments of transition and choice in my art. Echoes of what has passed and promises of what is to come.



The People Who Fall Asleep Mike Boyer

07779 058735

mikeboyermessenger@gmail.com
yvonnecoomberart.com

HOUSE



11.00-17.00

M	T	W	T	F	S	S
2	3	4	5	6	7	8
9	10	11	12	13	14	15
16	17	18	19	20	21	22
23	24	25	26	27	28	29

3 Phoenix Art Space Open Studios

Phoenix Art Space 10-14 Waterloo Place, Brighton BN2 9NB



Explore the workspaces of artists, designers and creative businesses at Phoenix Art Space. Phoenix is home to 120 professional artists at all stages of their careers, working across all types of media. Learn about the practices, processes and ideas of artists and gain insight into what inspires them. Curated tours are available and families with children are invited to participate in our artistic treasure trail. It is a great opportunity to buy original art direct from makers.

Open weekend of 21 & 22 May only

01273 703398
info@phoenixbrighton.org
phoenixbrighton.org

STUDIO-OR-WORKSHOP



11.00-18.00						
M	T	W	T	F	S	S
2	3	4	5	6	7	8
9	10	11	12	13	14	15
16	17	18	19	20	21	22
23	24	25	26	27	28	29

4 The Coal Hole

38 Albion Hill, Brighton BN2 9NW



Pink & Green Georgina Smith

Back for a seventh year, this architect-renovated former coal merchant, is once again filled with a bold and bright mix of eclectic talents.

Georgina Smith

Architectural relief painting

Suzie Poyntz *Painting*

Puppetbox *Puppets*

07773 197006

thecoalholeah@gmail.com

www.instagram.com/thecoalholeah

HOUSE



Lisa Holdcroft *Quirky cartoons*

Cassia Beck

Retro collage and gifts

Curve Top Tables *Furniture*

Ulrika Jarl *Prints and lampshades*

Suzi Lowe

Semi-abstract painting

Pinki Jones

Prints and leather jewellery

11.00-17.00 except Sat 7 May 13.00-17.00

M	T	W	T	F	S	S
2	3	4	5	6	7	8
9	10	11	12	13	14	15
16	17	18	19	20	21	22
23	24	25	26	27	28	29

5 Floppy Toast @ The Pink House

78 Queens Park Road, Brighton BN2 0GL



Mixed Gallery: Floppy Toast

A design focused studio, Floppy Toast produces typography inspired art prints and stationery just that little bit different than the rest. Our work is firmly based in classic design but with a rock 'n' roll edginess. Showing for the first time in Brighton with a wide range of limited edition prints, stationery and abstract paintings.

07966 377326

info@floppytoast.com

www.floppytoast.com

HOUSE

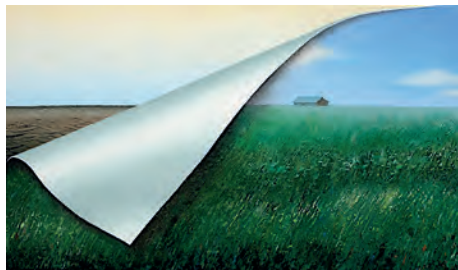


10.00-17.00

M	T	W	T	F	S	S
2	3	4	5	6	7	8
9	10	11	12	13	14	15
16	17	18	19	20	21	22
23	24	25	26	27	28	29

6 Forty-Two

42 Queens Park Terrace, Brighton BN2 9YA



Green and Gold Ian Daniels

Paintings by **Ian Daniels** focus on landscape; from meditative horizons to planets. Photographs reflect on the beauty to be found in everyday encounters.

Gary Edwards makes hand-built ceramics, emphasising the maker's marks through the use of bold shapes and layers of strong colours.

07950 730161

contact@iandanielsgallery.com

iandanielsgallery.com

HOUSE



EcoOctopus eco-conscious jewellery, bunting and cards. Materials include sea glass, recycled copper and home-grown flowers.

Seamstress and historian **Jordan Mitchell-King** explores embodied knowledge through examining, making and wearing historical clothing and textiles.

10.00-17.00

M	T	W	T	F	S	S
2	3	4	5	6	7	8
9	10	11	12	13	14	15
16	17	18	19	20	21	22
23	24	25	26	27	28	29

7 Christopher Lundie

68 Queens Park Rise, Brighton BN2 9ZF



NO 68. BLAM: Christopher Lundie

Christopher Lundie

Print making

Christopher Lundie is displaying a number of suites of prints tackling issues of colonialism and modernism's hold on art history. Political in their concept the prints are beautiful whilst remaining thought provoking as to their origins and what they might suggest as a past and a future.

07796 253725

christlundieprojects@gmail.com

www.instagram.com/christopherlundie/

HOUSE




10.00-17.00

M	T	W	T	F	S	S
2	3	4	5	6	7	8
9	10	11	12	13	14	15
16	17	18	19	20	21	22
23	24	25	26	27	28	29



Hove is where the Art is!

 We're so pleased to be back! **Hove Arts** award winning artists and makers simply can't wait to welcome you into our homes and workshops again, where we've put together a truly inspiring selection of creative work. In past years our venues have won Best Open House and we've had several Runners Up, with our carefully curated shows to delight art lovers of all ages, and this year we've got six exciting new houses for you to explore!

At every house look out for our ever popular Hove Trotter's Children's Quiz, sponsored by our friends at The Book Nook, featuring a drawing competition with lots of prizes on offer! Most venues are open every weekend 11-6pm but please check the venue for details.

www.hovearts.com

Travel information

Walking From Brighton: take the promenade or Western Road heading west. From Portslade/West Hove: take New Church Road or the promenade heading east.

Train Regular services to Hove Station from Brighton, London and the South West.

Bus Hove Station 7, 81; Hove Town Hall, Church Road 1, 1A, 2, 2A, 6, 5, 5A, 5B, 25, 46, 49, 81, 81B, Hove Crickler Ground 81B, Old Shoreham Road/Hove Park 5B

Cycling Smart bike share docks are at Hove Station, George Street, Hove Tesco's, the seafront and throughout the city. Cycle lanes along the seafront from Brighton, Portslade, Grand Avenue, The Drive and Old Shoreham Road.

Car M23, A23, or A27 follow signs to Brighton then follow signs to Hove. Pay and Display bays throughout Hove and there is also a car park in Norton Road opposite Hove Town Hall.

Sponsors

The Book Nook
booknookuk.com

Circa Events
circaevents.com

Space Doctors
space-doctors.com

Washbrooks Family Farm
washbrooks.co.uk

Cameron Contemporary Art
cameroncontemporary.com

Platf9rm
platf9rm.com

Talented Art Fair
talentedartfair.com

Croudace Properties Group
croudaceproperties.co.uk

1 5 at No. 1 Rigden Road Pop-up

1 Rigden Road, Hove BN3 6NP

The Morning - acrylic on canvas, Kate Scott



Kate Scott

Painter

Emma Stanton

Responsibly

sourced

handmade

jewellery

Jayne Armstrong

Artist and maker

in wood

Evie Whittingham

Soundscape artist

and musician

Christian Funnell

Sculptor and

designer

Kate Scott opens her home, garden, and studio one weekend this year with a group of artists she loves, with sculpture, painting, jewellery, art in wood, and a collaboration of music and film, plus refreshments.

Open Friday 20th – Sunday 22nd May only.

07719 337676

info@katescottpaintings.com

www.katescottpaintings.com

HOUSE



11.00 - 16.00

M	T	W	T	F	S	S
2	3	4	5	6	7	8
9	10	11	12	13	14	15
16	17	18	19	20	21	22
23	24	25	26	27	28	29

2 Art in Bloom

27 Wilbury Avenue, Hove BN3 6HS



Painted Poppy, Karen Hollis

A warm welcome awaits you at our Victorian home in Hove. We'll be exhibiting artworks throughout the ground floor and out into the walled garden. On show will be a selection of works from familiar artists with refreshments available to enjoy in the garden.

07932 062615

karen@artinbloom.co.uk

www.artinbloom.co.uk

HOUSE



11.00-18.00

M	T	W	T	F	S	S
2	3	4	5	6	7	8
9	10	11	12	13	14	15
16	17	18	19	20	21	22
23	24	25	26	27	28	29

Karen Hollis *Painting*

Robyn Neild *Bronze sculpture*

Tessa Wolfe Murray *Ceramics*

Jill Tattersall *Mixed media*

Zoe Clare *Ceramic sculpture*

Judith Berrill *Painting*

Sharon Griffin *Ceramic sculpture*

Gary Hodges *Wildlife drawing*

3 Vilia Art

61 Shirley Street, Hove BN3 3WH



Vilia Art is delighted to showcase a number of works by local artists across a variety of styles and mediums. The Open House is across the open-plan ground floor and rear garden. Come

and enjoy a complete range of landscapes, sea scapes, impressionist works and a collection by an African artist completed whilst he lived in Brighton.

07718 535549

info@viliaart.co.uk

ViliaArt.co.uk

HOUSE

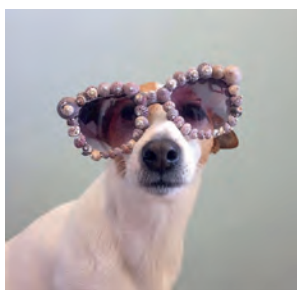


10.00-18.00

M	T	W	T	F	S	S
2	3	4	5	6	7	8
9	10	11	12	13	14	15
16	17	18	19	20	21	22
23	24	25	26	27	28	29

4 Mr Bean & the Mermaids

40 Goldstone Villas, Hove BN3 3RS



Mr Bean, Beach Shack Project

An eclectic mix of coastal inspired artwork all created by three friends.

Beach Shack Project

Pressed seaweed art, folk

inspired illustration and sea

glass jewellery

beachshackproject@yahoo.co.uk

www.beachshackproject.co.uk

HOUSE



Karen Rao

Hand felted animal inspired

costume wear with Japanese

style ink brush art

Dinah Dufton

Art, niche perfumery, small batch

spa products and jewellery

You will also find Mr Bean... the

Jack Russell!! Not for sale!

10.00 - 16.00

M	T	W	T	F	S	S
2	3	4	5	6	7	8
9	10	11	12	13	14	15
16	17	18	19	20	21	22
23	24	25	26	27	28	29

5 Dion Salvador Lloyd

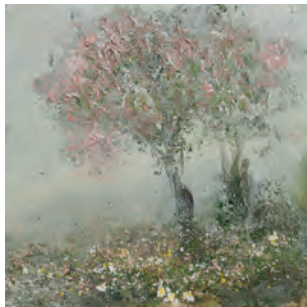
18 Goldstone Villas, Hove BN3 3RQ



Sealight: Dion Salvador Lloyd



Windmill Hill: Dion Salvador Lloyd



Blessings: Dion Salvador Lloyd

Brighton born established artist **Dion Salvador Lloyd** warmly welcomes you to his home and studio for his 22nd consecutive year of Open House. Exhibiting a new collection of contemporary abstract sea and landscape oil paintings and works on paper alongside new botanical works inspired from in and around the South Downs and the Sussex coastlines. New framed limited edition signed prints also available to view.

Dion has an exciting year ahead with exhibitions including a retrospective solo show at Horsham Museum and Art Gallery starting this September.

His home/studio is open by appointment on all other days and dates throughout the year

Represented by galleries in London and the UK

Commissions undertaken

Winner of Best Open House 2015

Comments from previous Open House visitor's book:

'Beautiful work beautiful people'

'Lovely to chat and be inspired'

'As stunning as always'

'One if not the best Open House'

'Keep going and never stop - you are acing it'

'Atmospheric and layered with energy'

'Always inspiring and very special'

'So lovely to make a connection with you'

'Fantastic paintings love them all'

'Always my favourite Open House'

07718 450 745

info@dionsalvador.co.uk

www.dionsalvadorlloyd.com

HOUSE



10.00-18.00

M	T	W	T	F	S	S
2	3	4	5	6	7	8
9	10	11	12	13	14	15
16	17	18	19	20	21	22
23	24	25	26	27	28	29

6 Rocks, Rooks & Threads

St Andrew Old Church, Church Road, Hove BN3 2AD



On the blue (and) rooks: Annelies Clarke

That the birds of care and worry fly above your head, this you cannot change. But that they build nests in your hair – this you can prevent.

St Andrew's will feature a playful and unorthodox hanging of drawings and paintings by **Annelies Clarke**, paintings by **Nick Gardner**, mixed media artworks by **Rebecca Angel**.

07808 532451
anneliesclarke@gmail.com
www.anneliesclarke.com

COMMUNITY



11.30-16.30

M	T	W	T	F	S	S
2	3	4	5	6	7	8
9	10	11	12	13	14	15
16	17	18	19	20	21	22
23	24	25	26	27	28	29

7 David Streeter & Friends

54 Osborne Villas, Hove BN3 2RB



After the storm 2021 David Streeter

David's once again pulled together an eclectic mix of visual delights and unique gifts from 10 artists and makers, beautifully showcased over two floors, together with stunning sculptures and homemade cake in the garden to round things off. *Photography and workshops:* **David Streeter**

Painting: **Paula Gomes** and **Louise Erskine**
Sculpture: **Tezel Bahcheli**
Textiles: **Nicole Urbanski** and **Em Erskine**
Jewellery: **Lizzie Kershaw** and **Touchwood Jewellery**
Bespoke frames and preserves: **Lucy Palmer**

07803 743782
davidjohnstreeter@gmail.com
www.instagram.com/
davidstreeterandfriends/

HOUSE



11.00-18.00

M	T	W	T	F	S	S
2	3	4	5	6	7	8
9	10	11	12	13	14	15
16	17	18	19	20	21	22
23	24	25	26	27	28	29

8 The Claremont

The Claremont, 13 Second Avenue, Hove BN3 2LL



Our lovely garden

After a two year gap (which we won't talk about!) we are thrilled to be back in May 2022, housing a wonderfully diverse collection of work including photography, ceramics, metals, paintings, jewellery, glass, and screen printing by over thirty artists, (for a complete list see our website).

Those who have visited us before will remember that our beautiful Victorian Villa is itself a work of art, with original period features and delightful walled garden. Free tea, coffee and homemade

cake tasters available from 12pm to 5pm or upgrade to Vintage Afternoon Tea by advance booking on our website.

This year we are also delighted to host the exhibition *Tokonatu Colour* by the artist **Abiru Katunori**. Katunori is a Japanese painter whose unique worldview has been recognised as particularly individual. He paints on cloud-skin hemp paper on a wooden panel using paint made from mineral pigments and plant glue – worth seeing.



the wedding venue: Sarah Jane Holland

01273 735161
art@theclaremont.eu
www.theclaremont.eu
COMMERCIAL-PREMISES



11.30-18.00

M	T	W	T	F	S	S
2	3	4	5	6	7	8
9	10	11	12	13	14	15
16	17	18	19	20	21	22
23	24	25	26	27	28	29

9 Cameron Contemporary Art

1 Victoria Grove, 2nd Avenue, Brighton and Hove BN3 2LJ

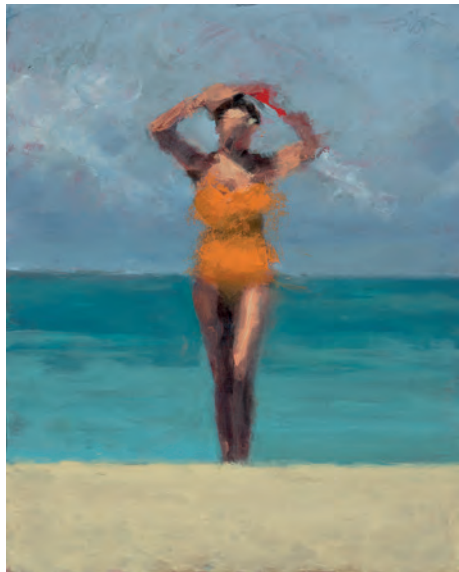


Figure on the Beach: David Storey

ALL THINGS MOSE & KIRSTY WITHER



Cameron Contemporary Art is an award winning independent gallery showing high quality art work by emerging and mid career artists and makers, many of them Sussex based. We show a range of painting, prints, ceramics, sculpture and jewellery and visit several major UK and International Art Fairs each year.

Artists exhibiting include:

Kevin Hendley Painting
Victoria Graimes Painting
Rowena Gilbert Ceramics
Julie Nelson Ceramics
Jane Campling Painting
Roberta Young Painting
Dean Patman Sculpture
Victoria Kiff Painting
Luella Martin Print making
Kirsty Wither Painting

01273 727234
 info@cameroncontemporary.com
 www.cameroncontemporary.com

Weekend 11.00-18.00 Weekdays 10.30-17.00

GALLERY



M	T	W	T	F	S	S
2	3	4	5	6	7	8
9	10	11	12	13	14	15
16	17	18	19	20	21	22
23	24	25	26	27	28	29

10 The Flamingo House & Garden

Garden entrance, 14a Wilbury Road, Hove BN3 3JN



Brighton Hove & Pavilion, Chichester, Brighton & Hove

The award nominated Flamingo House proudly presents a sensational collection made by 14 talented creators.

A relaxing oasis, where you can enjoy delicious food, join fun creative workshops and purchase fabulous art and crafts

Alejez Art prints
Charlie Doodle Prints
Claire Hines Mosaics

Graham Carter Prints
HalofHove Botanical alchemy
Helen Rebecca Ceramics
Kathy Laird Garden ceramics
Martha Mitchell Kitchenware
Nina Garstang Paintings
Sarah Arnett Prints
Soreh Levy Wabisabi
Sue Winter Sculptures
Wearthy Jewellery
 Viva los Vegan Cafe

07796 685775
 hello@flamingohouse.co.uk
 www.flamingohouse.co.uk

HOUSE



11.00-18.00						
M	T	W	T	F	S	S
2	3	4	5	6	7	8
9	10	11	12	13	14	15
16	17	18	19	20	21	22
23	24	25	26	27	28	29

11 Inspired Mosaics Studio

Garden entrance, 27 Wilbury Road, Hove BN3 3PB



Treasure: Liz Tiranti

Sculptor and fine art mosaicist **Liz Tiranti** invites you to explore her studio set in a lush Hove garden. On show will be a collection of magical garden sculptures, alongside an eclectic mix of mosaic wall art. With an extensive portfolio of internationally commissioned work, Liz is also well known for her mosaic courses. Visit the studio to find out more and expect dynamic shapes, bold colour, sparkle and a warm welcome.

07973 273577
 hello@litztiranti.com
 www.inspiredmosaicstudio.com

STUDIO-OR-WORKSHOP



10.00 - 17.00						
M	T	W	T	F	S	S
2	3	4	5	6	7	8
9	10	11	12	13	14	15
16	17	18	19	20	21	22
23	24	25	26	27	28	29

12 Life Love and Me

25a Palmeira Mansions, Church Road, Hove BN3 2FA



Painting - original oil on canvas - Sarah Bagg

Don't miss the opportunity to see this beautiful collection of artist's work, chosen carefully to complement their specialist talents!

This collection of work is guaranteed to make you smile!

Sarah Bagg *Painting*
Baby Gaia Crochet *Textiles*
Curly Lulu *Textiles*
Vannucchi *Jewellery*
We Are Mountain *Print making*
Canda Bytes *Illustration*
Duck Ceramics *Ceramics*
Holly Swain *Illustration*
Lauren Nickless *Illustration*

sarah@lifeloveandme.co.uk
 www.lifeloveandme.co.uk
 www.lifeloveandme.co.uk/art-shop/

HOUSE



10.00- 17.00

M	T	W	T	F	S	S
2	3	4	5	6	7	8
9	10	11	12	13	14	15
16	17	18	19	20	21	22
23	24	25	26	27	28	29

13 Number 10

10 Palmeira Square, Hove BN3 2JB



Painting - original oil on canvas - Sarah Bagg

Painting and illustration:

Barrie J Davies
Linescapes
David Ryan/Artually
Hattie Gordon
Patti Hopkins
Bite Your Granny
Eve Poland
Katarzyna Aekbote
Beau-Bottletops
Diane Bailey
Janie Ranger

Jewellery:

Dani Crompton Designs
Twisted Rocks

Textiles:

Vintage Victoriana
Sublime Vintage
Renush Accessories

Ceramics:

Jewelfloozzy
Claire Scott
Gail Anderson
Aysenil Senku

Welcome to Number 10, where you'll find an eclectic mix of artists and makers showing their work in a beautiful Grade II listed apartment, itself full of curiosities and collectibles.

07816 922979
 janieranger@googlemail.com

HOUSE



11.00-17.00

M	T	W	T	F	S	S
2	3	4	5	6	7	8
9	10	11	12	13	14	15
16	17	18	19	20	21	22
23	24	25	26	27	28	29

14 Clara Wilkinson Art

Flat 1, 33 Adelaide Crescent, Hove BN3 2JJ



Exmoor wild flowers at night. Clara Wilkinson

Clara Wilkinson is an artist and illustrator and one half of *Living Wall Murals*, a mural painting collaboration. She'll be opening her eclectic and colourful Regency flat/work-studio this summer, exhibiting oil paintings, works on paper and giclee prints from her series 'beneath the surface' inspired by nature, foliage and the decay of wild flowers.

Also available will be her observational drawings of people and places from her travels and around Brighton and Hove.

clara@clarawilkinsonart.com
 www.clarawilkinsonart.com

HOUSE



12.00 - 17.00

M	T	W	T	F	S	S
2	3	4	5	6	7	8
9	10	11	12	13	14	15
16	17	18	19	20	21	22
23	24	25	26	27	28	29

Proud To Support

{ THE ARTIST OPEN HOUSE FESTIVAL }

HAMPTONS.CO.UK

The
Old Ship
HOTEL
BRIGHTON

MIXOLOGY GROUP

THE CELLAR

COCKTAIL masterclass

EXPERIENCE

Various
dates
available

Saturday
Afternoon
only
£34
per head

Friday
Night
only
£49
per head

*Do you want to 'create and shake'
your own cocktails?*

includes

90-minute cocktail masterclass
with expert mixologists

Welcome Drink and then make
and enjoy 2 cocktails


In the Old Ship Hotel's
460 year-old cellars

Includes bar food on
Friday night





FILM *on* TV

Every night at 9pm on *latest* 

Freeview 7 · Virgin 159

FREEVIEW 7

latest 

VIRGIN 159



Take the **Kempton Trail** with many fantastic artists' homes, studios and galleries showing original art, printmaking, photography and crafts. Stroll along the seafront or through Kemptown village, taking in Queens Park, Sussex Square and Marina, with numerous cafes and independent shops along the way, and pop into trail venues to enjoy wonderful displays from a wide range of artists.

www.kemptonarts.org.uk

Travel information

Rail It takes about 15 minutes to walk from the railway station to the Old Steine and the start of Kemptown.

Bus Numbers 12/13/14 provide regular service along the seafront. The number 7 bus goes from the railway station to Kemptown (direction Marina). The area is very well served by other buses from all parts of the city (see www.buses.co.uk).

Sponsors

Cup of Joe Cafe
Barber Blacksheep Hairdressers
Seed n Sprout whole food shop
Ouse Valley Foods preserves
Nanima Cafe
Vintage Workshop clothing, art, homewares
Colourstream film lab and framing
Castles Sandwich Bar
Hello Gorgeous Art
Paul Bott Estate Agents
Kemp Thai takeaway
Open Bakery artisan bakers
Saint Georges Inn

1 Debbie Lawrence

204 Freshfield Road, Brighton BN2 9YD



Don't head to the dark places and to see what comes to you in the silence. Debbie Lawrence

In her joyful, colourful paintings, Debbie observes the healing power of nature and restoring properties of water.

Paintings often depict sea swimmers in imagined landscapes, evoking feelings of immersion, connection and solitude within the natural world.

07919 115492
debbielawrenceart@icloud.com
Debbielawrenceart.com

HOUSE



She works intuitively on canvas with bold brushstrokes and thick textural layers of colour, searching for the balance within the painting.

Garden open for home-made cakes, tea, kombucha and other treats.

10.00 - 16.00

M	T	W	T	F	S	S
2	3	4	5	6	7	8
9	10	11	12	13	14	15
16	17	18	19	20	21	22
23	24	25	26	27	28	29

2 The Little Giraffe House

29 Canning Street, Brighton BN2 0EF



The Little Giraffe House

Clair and Sarah are the artists at The Little Giraffe House. Clair takes her inspiration from local images and Sarah looks to nature with a fun twist. Whilst their subject matter differs there is a shared essence in their work; looking at things from a slightly unusual perspective with a focus

07954 162213
thelittlegiraffehouse@gmail.com
www.thelittlegiraffehouse.co.uk

HOUSE



on form and colour. Prints, cards and gifts available to purchase.

Sarah Goodfellow *Print making and collage*

Clair Butler (ClairyB) *Print making and needlefelt*

Kat Crossley *Automata*
Octavia Verity *Drawing*

10.00 - 17.00

M	T	W	T	F	S	S
2	3	4	5	6	7	8
9	10	11	12	13	14	15
16	17	18	19	20	21	22
23	24	25	26	27	28	29

3 Art Rascal

47 Sutherland Road, Brighton BN2 0EQ



Brighton Sweeties / David Bennett

Join the Art Rascals for vibrant printmaking, painting, hand crafted jewellery, ceramics and homeware.

Colourful printmaking by J David Bennett

Photoreal painting by Mark Santler

Contemporary jewellery by Gabriel Andrade

Joyful ceramics by Liza Morton

Silver jewellery and copper sculpture by Troy Ohlson

Urban pop art by Barrie J Davies

art.rascal.uk@gmail.com
www.art.rascal.com
www.instagram.com/davidbennett/

HOUSE



M	T	W	T	F	S	S
2	3	4	5	6	7	8
9	10	11	12	13	14	15
16	17	18	19	20	21	22
23	24	25	26	27	28	29

4 At the Coach House

22 Walpole Road, Brighton BN2 0EA



The Coach House is a unique space in the heart of Kemp Town dedicated to the creative arts and education. We are delighted to be hosting this fabulous array of artists' work alongside an interesting menu of workshops, events and talks, but first you must walk up the drive!

Karen Francesca *Mosaic artist*

Margaret Shillan *Painter*

Thirzie and Georgia

Robinson *Ceramics,*

collage and prints

Kamran Amin and

Alice Spira Spearman

Green woodworker and

jewellery maker

Nevil Brewin *Painter*

Wild Jar *Terrariums*

07796 054442
atthecoachhouse@googlemail.com
www.atthecoachhouse.co.uk

HOUSE



M	T	W	T	F	S	S
2	3	4	5	6	7	8
9	10	11	12	13	14	15
16	17	18	19	20	21	22
23	24	25	26	27	28	29

5 Brighton College Prep School

Walpole Road, Brighton BN2 0EU



Still Life: Bela



Brighton Linocut: Jocelyn



Spring Jug: anon.

Please join us at Brighton College Nursery, Pre-Prep and Prep School to view a range of pieces created by our pupils aged 5 to 12 years of age.

Our exhibition celebrates a diverse range of skills and a wide range of taught techniques. It includes paintings, prints and ceramics, alongside other delightful examples which showcase our pupils' talents in both curriculum art lessons and specialist art clubs.

We look forward to welcoming you.



01273 704210
tbates@brightoncollege.net
www.brightoncollege.org.uk/pre-prep-prep/

EDUCATIONAL INSTITUTION



10.00 - 16.00

M	T	W	T	F	S	S
2	3	4	5	6	7	8
9	10	11	12	13	14	15
16	17	18	19	20	21	22
23	24	25	26	27	28	29

6 Anahata Health Clinic

119-120 Edward Street, Brighton BN2 0JL



The Magic Corner: Zoe Funge-Smith

Art and Healing.

Anahata means the Heart Chakra and Anahata Health Clinic has supported the community for 20 years as a wellness centre in Brighton, offering affordable therapies, yoga, meditation and more.

The art works are by healers and people who've found healing through their art:

Zoe Funge-Smith, Helen Nestor, Patrizia Gaio, Nadia Franchi, Sue Foster, Cara Mathia Brennan and Magdalena Reisling.

Paintings, drawings, weaving and cards.

01273 698687
info@anahatahealth.co.uk
anahatahealth.co.uk

COMMUNITY



10.00 - 17.00

M	T	W	T	F	S	S
2	3	4	5	6	7	8
9	10	11	12	13	14	15
16	17	18	19	20	21	22
23	24	25	26	27	28	29

7 The House of Pop!

Flat 1, 27 New Steine, Brighton BN21PD



Give a little love: Dave Pop!

Dave Pop! is a Brighton based artist, creating bright, bold pop art with a generous topping of seaside sauce! After the closure of Choccywoccydoodah, Dave has become a full time artist, recently painting a huge mural on North Street in a fairground style using dynamic colours, baroque swirls and fancy lettering. Add a touch of risqué humour, sexy guys and pin-up gals, for a Brighton Pop Art experience. Paintings, prints and Tiki ceramics for sale.

dave@davepopart.com
www.davepopart.com
instagram @davepopart

HOUSE



11.00-18.00

M	T	W	T	F	S	S
2	3	4	5	6	7	8
9	10	11	12	13	14	15
16	17	18	19	20	21	22
23	24	25	26	27	28	29

8 Patsy McArthur

Flat 2, 77 Marine Parade, Brighton BN2 1AE



Working on Follow Me: Patsy McArthur

Scottish artist, **Patsy McArthur**, opens her house for the first time with a solo exhibition of original drawings, paintings and prints as well as rarely available small studies and sketches from the studio. Patsy's career spans 20 years and she has exhibited extensively with recent shows in Miami, London and Geneva. Best known for her large charcoal drawings of figures in motion and often in water, her work deals with themes of escapism, strength and freedom. Her home reflects her work and reveals her inspiration with incredible views to the sea.



Sanctuary: Patsy McArthur

07825 291192
hello@patsymcarthur.com
www.patsymcarthur.com

HOUSE



11.00 - 17.00

M	T	W	T	F	S	S
2	3	4	5	6	7	8
9	10	11	12	13	14	15
16	17	18	19	20	21	22
23	24	25	26	27	28	29

9 Koop Projects

93 St George's Road, Kemptown, Brighton BN2 1EE

Based in Kemptown, Brighton, Koop Projects is a neighbourhood gallery with an international outlook.

We support creative projects that emphasise the role of contemporary African art and artists as a dynamic source for learning and change, promoting sustainable art practices through an interrogation of materiality and the contexts in which artists across Africa make and show their work.

We are collaborative and community-focused, looking to foster conversations between artists in Africa and their counterparts in and around Brighton – opening doors for people with stories to tell by providing them with a space in which to realise their projects.

An open and nurturing place for free thinkers and creators, our innovative and evolving programme of exhibitions and events explores the boundaries between art, craft and design, finding connections in the people and places where these practices meet.



074831 63396
info@koopprojects.com
www.koopprojects.com

GALLERY

NEW

11.00-18.00

M	T	W	T	F	S	S
2	3	4	5	6	7	8
9	10	11	12	13	14	15
16	17	18	19	20	21	22
23	24	25	26	27	28	29

10 Keep Art At Home

13 Paston Place, Brighton BN2 1HA

MAX LOPEZ KIRSTEEN ADAMS



We believe in making great art affordable and investing in those special pieces we think you'll love.

Cassette Lord *Mixed media*
Andrew Morris *Painting*
Dinah Dufton *Mixed media*
Freeman_uk *Illustration*
Relab.upcycled.lab *Textiles*
Luella Steed *Mixed media*
Joseph Ford *Photography*
Sarah James *Painting*
Dave Pearce *Painting*
Sarah Jones *Illustration*
Mark Wheatly *Print making*
My Pen Leaks *Illustration*
Georgia Sawyers *Ceramics*
Haus of Lucy *Mixed media*
Little Papa Doll House *Mixed media*
Kirsteen Adams *Print making*

We are truly excited to be opening our home for the first time.

We are a collection of contemporary artists, makers and photographers, featuring works filled with colour, humour and creativity. Bringing together a diverse mix of artists, both established and up and coming, we are offering a great assortment of work at a range of prices.

01273 590557
 kirsteenokane@me.com
 instagram.com/keep_art_at_home

HOUSE



11.00 - 17.00

M	T	W	T	F	S	S
2	3	4	5	6	7	8
9	10	11	12	13	14	15
16	17	18	19	20	21	22
23	24	25	26	27	28	29

11 Potters Bar Brighton House & Garden

Flat 1, 4 Eastern Terrace, Brighton BN2 1DJ



Blue Stoneware Cakestand - in the Ceramic Garden & Studio: James Foley

The six ceramicists of the Great Kemptown Pottery Throwdown! invite you to see their eclectic range of work, displayed in a beautiful Georgian apartment, secret Paradise Garden and pottery studio. Plus stunning paintings by four Brighton and Chinese artists adorning the walls. This Artists Open House will be a delight for all artistic tastes in a historic corner of Brighton opposite the beach.

Potters: Claire Scott, Eve-Gnoyke, Gill Harvey, James Foley, Richard Howell, and Susan Ramsay-Smith
Painters: Allison Murphy, Judy Wiggin, Li-Qing, and Li Mang

07545 831961
 jamesffoleybn2@gmail.com
 Pottersbarbrighton.com

HOUSE



11.00 - 17.00

M	T	W	T	F	S	S
2	3	4	5	6	7	8
9	10	11	12	13	14	15
16	17	18	19	20	21	22
23	24	25	26	27	28	29

12 Percival Mansions Art House

Flat 11 Percival Mansions, Percival Terrace, Brighton BN2 1FP



Artist's Entrance: Sue Westbrock to look

Set in a Regency first floor flat directly overlooking the sea, this is an opportunity to view a range of styles and media, featuring the work of twelve artists.

Lynne Norker *Photography*
Stephen Randall *Print making*
Julian Warrender *Jewellery*
Sue Westbrook *Painting*

Paul Cahill *Photography*
Jane Hawkins *Print making*
Loraine Hayes *Painting*
Louise Nevett *Painting*
Cathy Baglithole *Painting*
Yolande Beer *Ceramics*
Dave Arthur *Print making*
Ben Baglithole *Photography*

07735 321200
 avocado60@me.com

HOUSE



11.00 - 17.00

M	T	W	T	F	S	S
2	3	4	5	6	7	8
9	10	11	12	13	14	15
16	17	18	19	20	21	22
23	24	25	26	27	28	29

13 One Sussex Mews

1 Sussex Mews, Brighton BN2 1GZ



Welcome to our eco-friendly studios. Artwork themes include landscape, trees and birds. Come and enjoy! We contribute to environmental charities.

Daisy Fearn *Creative artworks*
Derek Henry *Acrylic paintings and encaustic workshops*

Lindsey Pearson *Original watercolours and textiles*
Sally Henry *Interactive eco prints*

01273 622565
 sallyhenry.studio@btinternet.com
 www.onesussexmewsart.com

STUDIO-AND-WORKSHOP



11.00-17.00

M	T	W	T	F	S	S
2	3	4	5	6	7	8
9	10	11	12	13	14	15
16	17	18	19	20	21	22
23	24	25	26	27	28	29

14 12 Lewes Crescent

Flat 1, 12 Lewes Crescent, Brighton BN2 1FH



DOWN THE HALLWAYS: RICHARD NORBURY

The curators of 8 Charles Street return with a playful and offbeat event in one of Brighton's most literary Crescents, with a dynamic new collaboration of unseen textiles and photographs. Catherine's colourful handtufted wall art and rugs explore

nostalgia from 1970's graphics, family collections and abstract landscapes, whilst Richard shares highlights from his travel photography portfolio.

Catherine Grimaldi *Textiles*

Richard Norbury *Photography*

07763 121012
catherine.grimaldi@gmail.com
instagram : catherine.grimaldi

HOUSE



11.00-17.00						
M	T	W	T	F	S	S
2	3	4	5	6	7	8
9	10	11	12	13	14	15
16	17	18	19	20	21	22
23	24	25	26	27	28	29

15 East Side Print CIC

Unit 2, Arundel Mews - Entrance on Eastern Place, Brighton, BN2 1GG



Screen printing in the studio: East Side Print CIC

Welcome to East Side Print CIC, showcasing limited edition screen prints, unique cards, t-shirts and printed goods for sale.

We are a new creative space offering short courses in screen printing on paper, block & screen printing on fabric, cyanotype and photography, plus a studio membership scheme. See screen printing demos, have-a go yourself, find out more about the studio, our members' work, the techniques that we use and our work with community groups.

01273 694976
info@eastsideprint.org
www.eastsideprint.org

STUDIO-OR-WORKSHOP



11.00 - 17.00						
M	T	W	T	F	S	S
2	3	4	5	6	7	8
9	10	11	12	13	14	15
16	17	18	19	20	21	22
23	24	25	26	27	28	29

16 bip-Art Printmaking Studio

1a Arundel Mews, Arundel Place, Brighton BN2 1GG



Come and visit us at bip-Art Printmaking studio, an Open Access traditional printmaking studio, offering courses in etching, drypoint, collagraph, wood and vinyl cut, lithography and monotype. Situated in a Kemptown Mews, we promote the handmade, printed image and encourage artists, from the beginner to the advanced, to immerse themselves in printmaking. Pop in, visit our presses and talk to the artists to learn how the original prints in our show were made. Artwork for sale.

01273 603109
bipart@rocketmail.com
bip-art.co.uk

STUDIO-OR-WORKSHOP



11.00 - 17.00						
M	T	W	T	F	S	S
2	3	4	5	6	7	8
9	10	11	12	13	14	15
16	17	18	19	20	21	22
23	24	25	26	27	28	29

17 Number 38

38 Arundel Place, Brighton BN2 1GD



WAVE: MICHAEL SPARK

Michael Spark successfully exhibited for the first time with Artists Open Houses in Brighton in 2021. There will be a selection of framed original prints and paintings, based on landscape

and sea. There will also be unframed prints and greeting cards.

Michael Spark
Painting and printmaking

07973 152825
info@michaelspark.com
www.michaelspark.com

HOUSE



12.00-17.00						
M	T	W	T	F	S	S
2	3	4	5	6	7	8
9	10	11	12	13	14	15
16	17	18	19	20	21	22
23	24	25	26	27	28	29

18 Fair Trade Shop Brighton Marina

8 Waterfront, First Floor, Brighton Marina, Brighton BN2 5WA



Gertrude Oduro

Omsase is a Kenyan artist who paints animals and people in acrylics.

Odongo is also a Kenyan artist who paints rural African life in vibrant colours.

Tenzin Rabgyal is a Tibetan artist who paints stunning thangkas.

Philip David is a local Brighton artist working in pastels.

Silence is an Indian painters group

Purkhal is an Indian women's quilting group

Bombolulu Workshops handmade brass jewellery

Siwok Argentinian wood carvings.

07401 593574

kippwilson463@gmail.com
www.lovethestuff.co.uk

COMMERCIAL-PREMISES



11.00 - 17.00

M	T	W	T	F	S	S
2	3	4	5	6	7	8
9	10	11	12	13	14	15
16	17	18	19	20	21	22
23	24	25	26	27	28	29

Why Not Take Part?

If you live in the Brighton and Hove area, you can open your house to take part in the Artists Open Houses festival.

To find out how to get involved, including how to join a local trail, have a look at the 'Artists info' section of our website:

www.aoh.org.uk/artists-info/

You can also take part if you live outside the area, by becoming a guest artist exhibiting in someone else's Open House.

For more information visit:

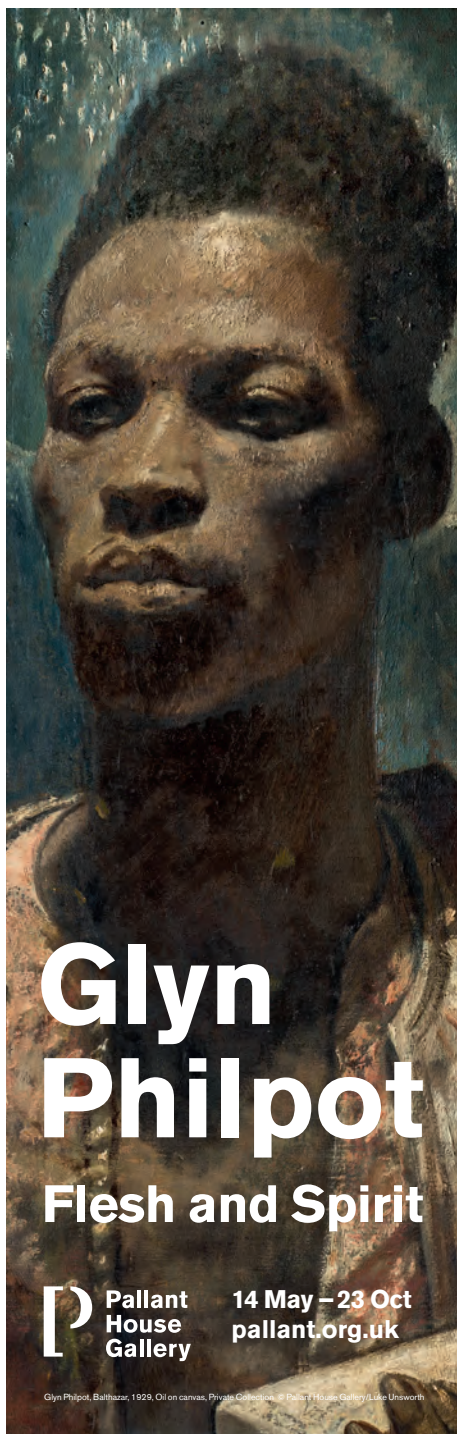
www.artists-seeking-houses.aoh.org.uk

Events in Open Houses

Many Open Houses offer you the chance to explore your creative side through hands on workshops and other events.

For all event information see the Events page of the AOH website:

www.aoh.org.uk/events



Glyn Philpot

Flesh and Spirit

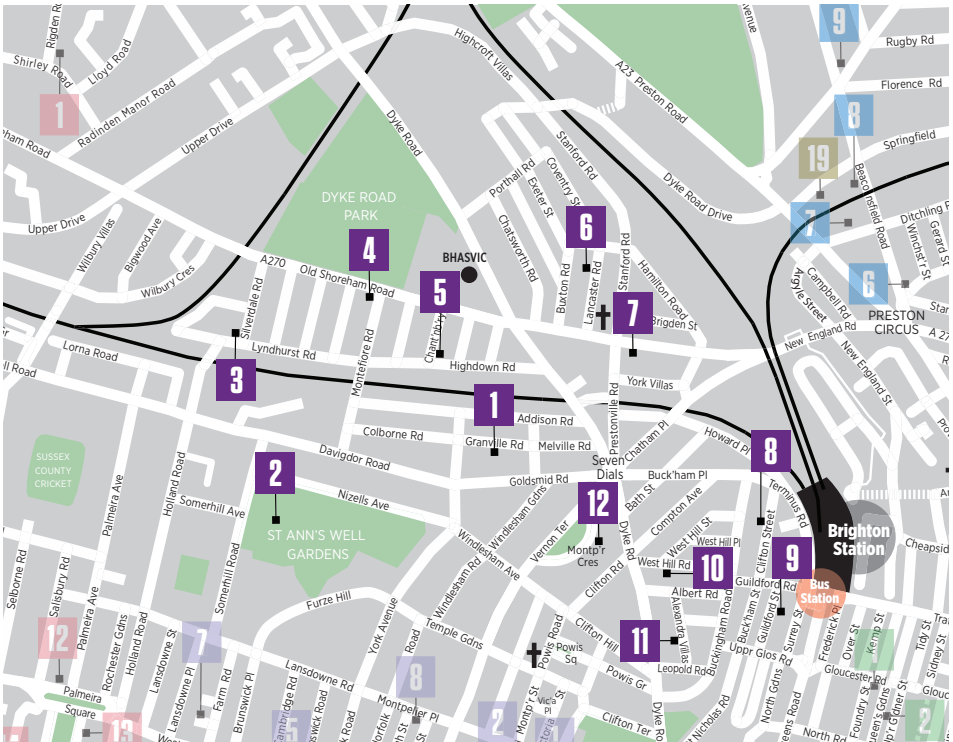


Pallant
House
Gallery

14 May – 23 Oct
pallant.org.uk

Glyn Philpot, Balthazar, 1929. Oil on canvas, Private Collection. © Pallant House Gallery/Luke Unsworth

Seven Dials



Seven Dials is a vibrant and inclusive trail, with a diverse range of venues hosting a great line up of artists, designers and makers. The area is full of community spirit, with lots of local bars and cafe's and within easy transport links from around the city and beyond.

This year we're back with a full trail! Some exciting new houses along with familiar favourites.

Find something special away from the high street, beautiful artwork, handcrafted gifts or simply a great opportunity to meet the artists and visit their creative homes and exhibitions.

Please follow our trail on Instagram throughout the festival.

Instagram: @7dialsart

Travel Information

Walking The trail is an easy walking route close to Brighton Station and the town centre.

Bus 7 stops at Dials roundabout towards Hove; 14, 14C and 27 travel along Dyke Road.

Rail Brighton Station is a 5 minute walk to start of trail.

Car Pay and display bays throughout the trail - some free parking on Sundays.

Sponsors

Adrian Robins Interiors www.adrianrobins.com

The Garden Cafe www.gardencafehove.co.uk

The Bookkeeping Room

www.thebookkeepingroom.co.uk

Caroline Jory Coaching

www.carolinejorycoaching.co.uk

Kindly Supermarket

www.kindlyofbrighton.com

Seven Cellars Wine Merchants

www.sevencellars.co.uk

Roger Mason Picture Framing

rogermason@gmail.com

Austin Rees www.arlets.co.uk

The Flour Pot Bakery www.flour-pot.co.uk

1 Cecil Rice

14 Granville Road, Hove BN3 1TG

Cecil welcomes you to his home and studio (just up from Brighton Station) for his 23rd Open House.

Winner of 2018 AOH Best Painter Award.

Original watercolours and oils of Brighton, Venice, Sussex, also botanicals, cityscapes, seascapes and landscapes.

Prints and cards.



Santa Maria della Salute, Venice (oil) Cecil Rice



Tuscan Poppies (watercolour) Cecil Rice



Sheep's Top, Dartmoor (watercolour and ink) Cecil Rice



Pelican Pier, Brighton (watercolour) Cecil Rice

07436 004833
cecilrice@gmx.co.uk
www.cecilrice.co.uk

HOUSE



							11.00 - 17.00	
M	T	W	T	F	S	S		
2	3	4	5	6	7	8		
9	10	11	12	13	14	15		
16	17	18	19	20	21	22		
23	24	25	26	27	28	29		

2 St Ann's Well Gardens Open House

St Ann's Well Gardens, Somerhill Road, Hove BN3 1RP



Sally Evans

Three weekends of art in the park! An eclectic mix of over 30 local artists coming together through creativity and self expression. Displaying and selling their work in the beautiful surroundings of St Ann's Well Gardens. In addition to the first two weekends of May, we will be incorporating our Artist Open House into our very popular Spring Festival on 21st May. Situated in the Sensory Garden this is set to be a great addition for 2022!

07917 402652
natalie@fosawg.org
www.friendsofstannswellgardens.org/

COMMUNITY



11.00 - 17.00

M	T	W	T	F	S	S
2	3	4	5	6	7	8
9	10	11	12	13	14	15
16	17	18	19	20	21	22
23	24	25	26	27	28	29

4 Montefiore Artists

36 Montefiore Road, Hove BN3 6EP



Two babies in a cradle by Pearl Beaumont, Marion Ammon

This year the exhibition focuses on inclusion and brings together artists with learning disabilities from across the organisation, celebrating rich and varied talent. The exhibition highlights work on paper with drawing, painting, collage and print, and we will

also be showcasing recent films which speak of people's lives while reflecting personal stories. We will have some interactive paper-based activities for you to join in with, so we look forward to welcoming you!

07848 456103
ewillcocks@grace-eyre.org
www.grace-eyre.org/

GALLERY



12.00-16.00

M	T	W	T	F	S	S
2	3	4	5	6	7	8
9	10	11	12	13	14	15
16	17	18	19	20	21	22
23	24	25	26	27	28	29

3 Tait Gallery

51 Lyndhurst road, Hove BN3 6FD



Open House: Landscape by Gail Gibson Tait

Opening our doors for the first time to show contemporary paintings and prints from a group of established artists working in a variety of materials and styles. There will be landscapes, cityscapes, seascapes, animals, mythology and life.

Gail Gibson Tait

Mixed media paintings

Judy Stevens *Linocut prints*

Kim Glass *Painting and prints*

Nancy Petley Jones

Landscapes and still lives in oils

Rachel Brooks Read

Painting and prints

We look forward to meeting you.

07932 640858
gailgibson100@hotmail.com
instagram.com/taigtallery51/

HOUSE



11.00-17.00

M	T	W	T	F	S	S
2	3	4	5	6	7	8
9	10	11	12	13	14	15
16	17	18	19	20	21	22
23	24	25	26	27	28	29

5 Salon des Sources

4 Chanctonbury Road, Hove BN3 6EL



Selection of porcelain works: Sophie Woodrow

The popular Salon des Sources is opening its doors again with some of your favourites, including our guest artist, ceramicist Sophie Woodrow. Do pop along and see us, you won't be disappointed.

Jewellery

Fiona Hutchinson,

Wild Blooms and

Sarah Packington

Textiles

Susan Kennewell,

Melanie Hodge,

Halinka Fairies and

Carol Seatory

Ceramics

Sophie Woodrow,

Jaquie Buckeridge,

Barbara Butterworth,

Angela Evans and

Dulse Ceramics

Painting and drawing

Pru Heath and

Charlie Williams

Cards and gifts

Madame Treacle,

Carol Thompson and

ZincyDesigns

Mosaics

Anna Tilson

01273 880385
jaqcards@ntlworld.com
www.facebook.com/salondessources

HOUSE

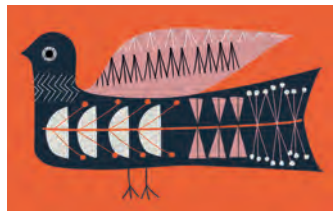


11.00 - 17.00

M	T	W	T	F	S	S
2	3	4	5	6	7	8
9	10	11	12	13	14	15
16	17	18	19	20	21	22
23	24	25	26	27	28	29

6 Northern Lights

29 Lancaster Road, Brighton BN1 5DG



Seven Dials 3rd floor

We are a Nordic style home near Seven Dials and a short walk from Brighton station. Plenty of new work to see with affordable art and gifts. Enjoy freshly baked cinnamon and cardamom buns and coffee in our garden. Tea and cake also available!

Scofinn

Textiles, prints, melamine and cards

Brian Britton Ink drawings

DNA Leather bags

Tom Butcher

Hand thrown stoneware ceramics

Julie Ingham Coastal prints

Martine Jans

Silver and gold jewellery

Tobie Jennings Paintings

Anette Gidlöf

Contemporary concrete vases and candleholders

Kathie Murphy Resin vases

Peter Slight

Slip-cast ceramic heads

Annabet Wyndham

Enamel and silver jewellery

07884 000436

scofinn@yahoo.com

www.instagram.com/northernlightsoopenhouse/

HOUSE



11.00 - 17.00

M	T	W	T	F	S	S
2	3	4	5	6	7	8
9	10	11	12	13	14	15
16	17	18	19	20	21	22
23	24	25	26	27	28	29

8 Abigail Bowen

22 Clifton Street, Brighton BN1 3PH



Image from 2021. Abigail Bowen

I paint 'The Edge of The Rainbow', which comes from *The Goldfinch* by Donna Tartt. She describes a space that sits just beyond reality, where all beauty, magic and art exists. I am attempting to conjure this space, through layers and layers of thin, runny oil paint to break through this reality and try and grasp what lies just beyond what we can see. It's a place that is blurry, shimmering and impossible to capture.

Please check website for available paintings.

07753 747307

info@abigailbowen.com

www.abigailbowen.com/

HOUSE



11.00 - 17.00

M	T	W	T	F	S	S
2	3	4	5	6	7	8
9	10	11	12	13	14	15
16	17	18	19	20	21	22
23	24	25	26	27	28	29

7 Slightly Scented

55 Old Shoreham Road, Brighton BN1 5DQ



Line from Richard Dawson

An eclectic mix of prints and paintings with botanical, political and pop themes.

Plus sample sale.

07590 928589

richard@happyretouching.com

richarddawsonartist.com

STUDIO-OR-WORKSHOP



11.00-17.00

M	T	W	T	F	S	S
2	3	4	5	6	7	8
9	10	11	12	13	14	15
16	17	18	19	20	21	22
23	24	25	26	27	28	29

9 Rex Ashlock Retrospective

30 Guildford Street, Brighton BN1 3LS



Paint: Rex Ashlock

This is a posthumous exhibition of paintings by the American artist Rex Ashlock, featuring two favourite themes: sea and women. Since his death in 1999, a number of Ashlock's works have been sold at auction and

privately, while others have been accepted by museums such as the Berkeley Museum of Art and Monterey Museum of Art.

For sale are some of his smaller-scale paintings that for family reasons have found their way to Sussex.

rexashlocktrust@gmail.com

www.rexashlocktrust.com/

HOUSE



10.00-17.00

M	T	W	T	F	S	S
2	3	4	5	6	7	8
9	10	11	12	13	14	15
16	17	18	19	20	21	22
23	24	25	26	27	28	29

10 Peggy Poppleton's House

20 West Hill Road, Brighton BN1 3RT



Top Row: Vase, Amber Shila

Pop into Peggy's to enjoy a carefully curated selection of work by some of Sussex's finest artists and artisans. Reliably delightful.

Sarah Bidwell *Textiles*
Emma Stanton *Jewellery*
5ftinf Phillipa Stanton *Photography*

01273 732331
 kcollingwood@hotmail.co.uk
 Instagram.com/peggy_poppleton

HOUSE



Peggy Poppleton *Pots and people*
Holly M Atelier *Bags and purses*
Ken Eardley *Ceramics*
Seven Seventeen *Scented homewares*
Rebecca Magner *Painting*
Sarah Gamble *Assemblage*
Atelier Stella *Ceramics*
Stealthy Rabbit *Papier mache*

11.00 - 17.00

M	T	W	T	F	S	S
2	3	4	5	6	7	8
9	10	11	12	13	14	15
16	17	18	19	20	21	22
23	24	25	26	27	28	29

11 Alizeti Creative

Side flat 1, 3 Alexandra Villas, Brighton BN1 3RE



Gift item: Renee Graham Adriani

We look forward to welcoming you to our special collection of new works on display by various artists at this stunning central venue with its lovely garden.

This year we are showcasing a new range of nature-inspired gelli prints, pen and ink drawings, outdoor sculptures and jewellery based on ancient artefacts,

original paintings, photography, textiles, hand-painted stones and more. Something for everyone!

Renée Graham Adriani *Mixed media and gelli prints*

Tom Adriani *Pen and ink drawings*

Jon Wilmot *Sculpture and jewellery*

07770 287245
 reneeoutthere@yahoo.co.uk
 insta: reneeadriani

HOUSE



11.00 - 17.00

M	T	W	T	F	S	S
2	3	4	5	6	7	8
9	10	11	12	13	14	15
16	17	18	19	20	21	22
23	24	25	26	27	28	29

12 Art at 21

21 Montpelier Crescent, Brighton BN1 3JJ



Top Row: Nick Gardner

Art at 21 brings together a rich body of paintings, sculpture, photography, prints and cards from an exciting mix of innovative and diverse artists, drawing on a range of abstract and figurative themes. Located in the elegant, leafy Montpelier Crescent, the exhibition reflects the 'vibrant' Seven Dials culture and the unique dynamism of Brighton.

07527 447308
 nick.gardner100@gmail.com
 Nickgardnerart.com

HOUSE



Ingrid Boucher *Sculpture*
Kate Scott *Painting*
Gary Goodman *Painting*
Jo Delafons *Sculpture*
Luciana Liraz *Photography*
Kate Strachan *Painting*
Nick Gardner *Painting*

11.00 - 17.30

M	T	W	T	F	S	S
2	3	4	5	6	7	8
9	10	11	12	13	14	15
16	17	18	19	20	21	22
23	24	25	26	27	28	29

BIOPHILIC GARDEN ROOMS

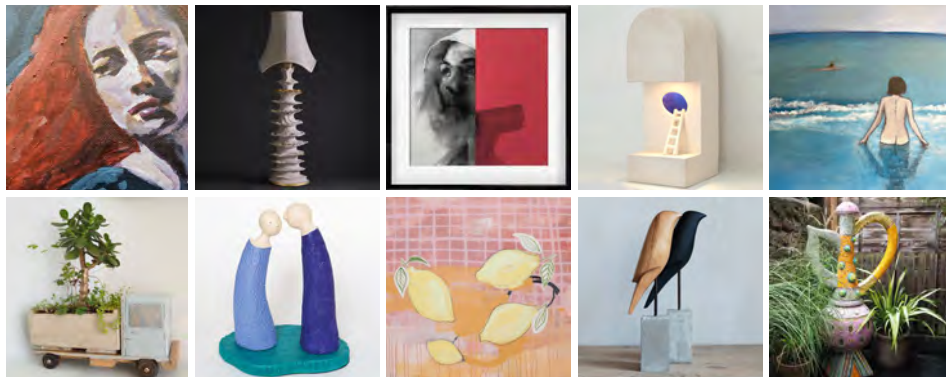
InSpira

07423 280463
IN-SPIRA.CO.UK



WHERE CONTEMPORARY ART MEETS STYLISH INTERIORS

British designer Katherine Richards presents a collection of original contemporary artworks by emerging and award-winning artists



Purchase affordable artwork with ten interest-free monthly payments

Visit the gallery in Hove or browse online for standout art pieces to transform your favourite living space and infuse it with personality

111 Portland Rd, Hove, E Sussex BN3 5DP



www.katherinerichardsartgallery.co.uk

Supporting Local Artists

LAWRENCE
ART SUPPLIES SINCE 1859

Discover Lawrence Art Shop in Hove...
you'll find top quality artists'
materials and equipment from
around the world.

The REAL Art Shop

208-212 Portland Road, Hove, BN3 5QT
01273 260280
(Free customer car park at rear of shop)
www.LAWRENCE.co.uk

Helen Brown

**bip-Art Printmaking – 1a Arundel Mews,
Arundel Place, Kemptown, BN2 1GG.**

**Upfunt House – 177 Ditchling Road,
Brighton, BN1 6JB**

**Devils Dyke Farm – Devils Dyke Road,
Brighton, BN1 8YL**

hello@helensprints.co.uk
07747105421
helensprints.co.uk



West Hove Trail is a vibrant, fun and ever-growing trail, located in a lovely upcoming and easily accessible part of Hove, stretching between Sackville Road to the east and Boundary Road to the west. Celebrating our 13th anniversary, the trail has been very successful, with members winning Best Open House Award on three occasions, and one of our artists was the AOH brochure cover artist in 2019. The trail is a mix of friendly and eclectic houses and studios, exhibiting a wide range of fine art, design and crafts. Many open their gardens and offer delicious refreshments. It's a great day out, strolling along the leafy streets and parking is usually easy and mostly free.

Travel Information

Bus Hove Station 7, 7A, 81 Church Road/Portland Road 1, 1A, 2, 2A, 5, 5A, 5B, 6, 25A, 46, 48, 49A. Bus numbers 12/13/14 provide regular service along the seafront

Rail Hove Station, Aldrington Station, Portslade Station. Regular services from London Victoria, Southcoast Line and Brighton.

1 The Round Space Studio

6 Worcester Villas, Hove BN3 5TB



HEATHCOTE ST STUDIO - JAMES BAKER

We welcome your visit to The Round Space Studio, designed and hand-crafted by the artist.

James Baker is a carpenter, artist and maker who is inspired by the landscape. James uses charcoal and watercolour in his paintings.

Also for sale are pieces made from locally sourced branch wood and recycled materials. These include lamps, sculptures and rustic furniture.

He will be joined by **Dan Johnson**, a metal artist using scrap and repurposed steel.

07860200631

jamesbakerdesign@gmail.com

www.jamesbaker.org

STUDIO-OR-WORKSHOP



11.00 - 17.00

M	T	W	T	F	S	S
2	3	4	5	6	7	8
9	10	11	12	13	14	15
16	17	18	19	20	21	22
23	24	25	26	27	28	29

3 Chelston Artists

10 Chelston Avenue, Hove BN3 5SR



10 Chelston Avenue - Jo Kemp

Jo Kemp Watercolour painting

David Ward

Inspirational photography

Laura Jepson

Gift ideas and acrylic paintings

Melanie O'Riordan

Craft art, woven and felt textiles

Bonnie Hughes

Variety of small gifts

Joanna Lloyd

Casting and kiln formed glass

Hannah Issi Textiles

Jacqueline Muzzall

Watercolour painting

Nina Newman Ceramics

Emily Farthing

Organic skincare

07887 38315

jacquemuzzall@gmail.com

www.facebook.com/Open-House-at-10-Chelston-Avenue-574223866098485/

HOUSE



11.00-17.00

M	T	W	T	F	S	S
2	3	4	5	6	7	8
9	10	11	12	13	14	15
16	17	18	19	20	21	22
23	24	25	26	27	28	29

2 number forty

40 Leicester Villas, Hove BN3 5SQ



Kniphofia Oil on Canvas 120 x 150 cm: Paula Fahy

A friendly welcome and plenty to see at this lively open house. A range of disciplines displayed over two floors and into the garden.

07900 911022

paula.fahy1962@gmail.com

number_forty_aoh

HOUSE



11.00 - 17.00

M	T	W	T	F	S	S
2	3	4	5	6	7	8
9	10	11	12	13	14	15
16	17	18	19	20	21	22
23	24	25	26	27	28	29

Suzanne Mapledoram

Mixed media

Bronagh Shevlin

Mixed media

Paula Soldini Kearns

Mixed media

Jane Sweeney

Mixed media and

sculpture

Jo Winson

Oil on canvas

Lily Adamsfield

Mixed media

Paula Fahy

Oil painting

Chris Formaggia

Darned assemblage

Julie French

Stitched art

Tracey Konyu

Acrylic painting

Xanthe Mager

Prints and ceramics

Trish McElhone

Photography

4 14 St Heliers

14 St Heliers Avenue, Hove BN3 5RE



14 St Heliers Avenue - Lorna Casey

We are back for our fourteenth year, showing a diverse collection of contemporary work from both new and returning artists. Enjoy easy parking and a peaceful garden.

Stuart Smith Constructions

Caroline Charlton Hellyer

Ceramics

Tina O'Donnell Silver jewellery

Sophie Rankin Illustration

Lorna Casey Stained glass

Anna Smith Painting

Jenn Adamson Batik

Isla Willat Painting

Penny Marler Photography

Lucy Smith Glass

Mike Offer Jewellery

Kirsty Benkel Candles and melts

Steve Flowers Ceramics

Robert Matusiewicz Woodbits

01273 775968

stuartsmith217@gmail.com

stuartsmith.portfoliobox.net

HOUSE



11.00 - 17.00

M	T	W	T	F	S	S
2	3	4	5	6	7	8
9	10	11	12	13	14	15
16	17	18	19	20	21	22
23	24	25	26	27	28	29

5 12 Scott Road

12 Scott Road, Hove BN3 5HN



3D Cinema (detail): Hannah Forward

Hannah Forward
Linoprints and paintings
Georgia Flowers
Linoprints
Joy Fox
Mixed media
Si Uwins *Sculpture*
Lucy Ogden
Ceramics
Catriona Muir
Teatowels and cards
Josse Davis
Ceramics
Daisy Jordan
Mixed media
Anna Soba
Printmaking
Lola Lopez Alvarez
Printmaking
Sarah Bidwell
Textiles
Alison Milner
Mixed media

Nominated for the Best Open House award in 2021, we're very happy to be opening for our 5th year.

Enter our home through a courtyard on a corner to enjoy an array of unique, contemporary work by local artists and makers on the ground floor of a stylish Victorian house.

07747 462962
hello@georgiaflowers.co.uk
www.georgiaflowers.co.uk

HOUSE



11.00 - 17.00						
M	T	W	T	F	S	S
2	3	4	5	6	7	8
9	10	11	12	13	14	15
16	17	18	19	20	21	22
23	24	25	26	27	28	29

7 Villa LVI

56 Payne Avenue, Hove BN3 5HD



PAPER BOTANICA

Located in the heart of Poet's corner, Villa LVI is an established Open House with a multicultural team of artists. A wide variety of affordable art is on show reflecting the group's diverse origins and inspiration.

Paper Botanica *Mixed media*
Steve Gallagher *Photography*

07813 21742
vvirginie23@gmail.com
www.instagram.com/Villa.Lvi

HOUSE



11.00-17.00						
M	T	W	T	F	S	S
2	3	4	5	6	7	8
9	10	11	12	13	14	15
16	17	18	19	20	21	22
23	24	25	26	27	28	29

6 Amy Dury

2 Stoneham Road, Hove BN3 5HJ



UNTITLED 2021

New venue for a figurative artist who appeared on *Sky Portrait Artist of the Year '21*, conducted a livestream portrait painting for the Tate instagram in '21 and has been a popular Open House exhibiting artist in Hove

and further afield. Evocative paintings with vintage figures and faces telling contemporary stories, this beautiful space upstairs from the cafe at Stoneham Park is a must see.

Note: not open on last weekend.

07970 801193
amydury@yahoo.com
www.amydury.com

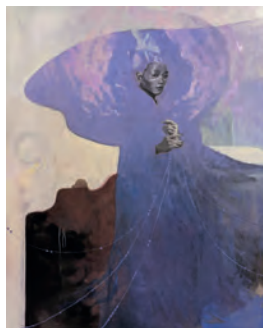
COMMUNITY



11.00-17.00						
M	T	W	T	F	S	S
2	3	4	5	6	7	8
9	10	11	12	13	14	15
16	17	18	19	20	21	22
23	24	25	26	27	28	29

8 Studio 106

106 Coleridge St, Hove BN3 5AA



Untitled 2021: James Cowland

Fantastic large open studios showing a diverse range of high quality artworks and an opportunity to see artist's workspaces.

07905 537832
hevquin@hotmail.co.uk
www.Studio106.co.uk

STUDIO-OR-WORKSHOP



Francis Anderson
Painting
Christina Reading
Painting
David Storey *Painting*
Matt Ward *Mixed media*
Lucianna Whittle *Painting*
Avis Lane Willan
Mixed media
Irene Marot *Painting*
Jael O'Connor *Painting*
Ele Pack *Painting*
Heather Quin
Mixed media
Richard Berner *Illustration*
Jon Clark *Lighting*
James Cowland *Painting*
Tom Diamantopoulo
Painting
Stephen Cavalier
Digital media
Emma Gale *Textiles*
Andre Lichtenberg
Photography

10.00-17.00						
M	T	W	T	F	S	S
2	3	4	5	6	7	8
9	10	11	12	13	14	15
16	17	18	19	20	21	22
23	24	25	26	27	28	29

9 Jomo Hove

31 Wordsworth Street, Hove BN3 5BG

Open House 2019



Lesley Bisseker
Hand stitched cushions
Judy Dwyer
3D textile creatures
Colin Mier
Screen printing
Jo Moore
Mixed media collage
Andrew Morris
Acrylic painting
Pip and Pickle
Sea glass jewellery
Amanda Sharkey
Mixed media painting
Samantha Stas
Whimsical textiles
Laurence Wallace
Watercolour painting

Opening for the first time in Poets' Corner with a mix of artists and makers. Featuring work by some festival favourites and introducing debut Open House artists. Eclectic, playful and beautiful work.

01273 739839
jo@jomo.co.uk
www.jomo.co.uk/

HOUSE



11.00 - 17.00

M	T	W	T	F	S	S
2	3	4	5	6	7	8
9	10	11	12	13	14	15
16	17	18	19	20	21	22
23	24	25	26	27	28	29

10 Bluebell Would

45 Westbourne Gardens, Hove BN3 5PN



Between Two States: Bluebell Roebuck

Bluebell Roebuck *Photography*
Mark Munroe-Preston
Treescapes
Beachside Kiln *Glasswork*
Rebecca Lucas *Contemporary landscapes*
Amanda Blunden *Painting*
Jenny Turtill, **SweetiePips**,
Wild Flora and **Lulu McQueen**,
Jewellery
Jen Green, **Polly Marx Evans**,
Maria Buttler, **Heather Parr**,
Kirsteen Adams and
Ellie Doidge *Prints*
Isolation Monster and
The Eyerise Project *Illustration*
Woofing Fabulous and
Janina Chowaniec *Ceramics*
Fanny Fielding *Watercolours*
Chris Gildersleeve *Sculpture*
Plus **Be Natural Candles**,
Sarah's Doll Parts, **Magpie**,
The Plastic Coast, **Abelle**,
Beaubottletops, **Brighton View**,
and **iHeart Pop Art**

07739 477611

Bluebellwouldopenhouse@gmail.com
www.instagram.com/bluebellroebuck

HOUSE



11.00 - 17.00

M	T	W	T	F	S	S
2	3	4	5	6	7	8
9	10	11	12	13	14	15
16	17	18	19	20	21	22
23	24	25	26	27	28	29

11 Lara Bowen Contemporary

Unit Nine, Lion Mews, Richardson Road, Hove BN3 5RA



Gallery image: Lara Bowen & Katie Weiner



Gallery Image: Sarah Weedon & Kate Henderson

Artists include:
Sophie Abbott,
Susan Ashworth,
Sam Lock,
Lara Bowen,
Guy Stevens,
Benedict Gubb,
Polly Arnett,
Sarah Weedon,
Kate Henderson,
Katie Weiner,
Becky Blair and
Dan Johnson.

Come visit Lara's painting studio and gallery, tucked away in a little mews in the heart of West Hove. Lara represents exciting emerging and much sought-after established artists from the South East, working in media from oils to inks, silkscreen to stoneware. No House style – simply beautiful art.

The gallery is open on Fridays and Saturdays from April to October with an ever-changing display of works to delight in. Lara is happy to advise on collecting, displaying and sourcing art pieces alongside offering an art finding service.

07909 511159

larabowen@me.com
www.larabowencontemporary.com

GALLERY



10.00 - 17.00

M	T	W	T	F	S	S
2	3	4	5	6	7	8
9	10	11	12	13	14	15
16	17	18	19	20	21	22
23	24	25	26	27	28	29

12 Ruth Mulvie @ 1 Courtyard Lane

1 Courtyard Lane, Off New Church Road, Hove BN3 4BP



Water world: children and Mumie from Stephen Widdowson photography

An extraordinary corner of Hove plays host this month to a collection of brand-new paintings and prints by artist **Ruth Mulvie**. Hidden on a quiet lane in the heart of Hove, you'll pass through a secluded gate and happen upon another world, where water and

space are explored through Ruth's newest paintings. Specially created for this event, this is, without doubt, the place to dive into this work in all its glory. Step out of time to this idyllic setting by the water. Immerse yourself in this joyful adventure.

07900 876300
hello@ruthmulvie.com
www.ruthmulvie.com

HOUSE



11.00-17.00						
M	T	W	T	F	S	S
2	3	4	5	6	7	8
9	10	11	12	13	14	15
16	17	18	19	20	21	22
23	24	25	26	27	28	29

14 Encounters

12 Langdale Road, Hove BN3 4HN



Anatexis 2: Akronos Art 1995

Our 'Future... Memory in Art Show' discards linear orthodoxy by re-conceptualising the flow of time.

Akronos Art sense a future not yet built, but as pages to be overwritten.

Tono Arias re-examines the lived past to foresee aspects of destiny.

Lise Moller's sculptures transform unloved nature into gifts for the future.

Gustavo Zajac shows that artistic greatness is outside of time.

We honour AOH's past and future with the pioneer, Ned Hoskins' rich imagery.

07773 171556
Miladsy@encountersartspace.com
www.encountersartspace.com

HOUSE



11.00-18.30						
M	T	W	T	F	S	S
2	3	4	5	6	7	8
9	10	11	12	13	14	15
16	17	18	19	20	21	22
23	24	25	26	27	28	29

13 Ilana Richardson & Guests

66 Langdale Gardens, Hove BN3 4HH



Ilana's sun-drenched home in a photograph

Ilana Richardson

Paintings and prints

Kate Osborn Paintings

Shefton Kaplan Domestic pottery

Nick Orsborn

Cicada jewellery and paintings

Terry Guile Jewellery

Claire Gill Photomontage

Jola Spytowska

Ceramic sculpture

Ilana's sun-drenched, Mediterranean paintings almost make up for our longings for travel. After years of exhibiting in London and worldwide, Ilana warmly welcomes you to her home.

07947 327690
art@ilana-richardson.com
www.ilana-richardson.com

HOUSE



11.00-18.00						
M	T	W	T	F	S	S
2	3	4	5	6	7	8
9	10	11	12	13	14	15
16	17	18	19	20	21	22
23	24	25	26	27	28	29

15 Carlisle Garden Studio

Flat 1, 28 Carlisle Road, Hove BN3 4FR



Hope II: Tiffany Crisp

A spacious garden with purpose built studio showing the work of three local artists.

Tiffany Crisp is an artist working in mixed media to explore our relationship with the environment and it's ever changing boundaries.

Annabel Porter@Hey Lyla Crafts makes one off macramé, jewellery and textiles based objects.

Adelle in Sussex is a designer and artist producing abstract modern art rainbow paintings using interior emulsion paint and metallic accents.

All works are for sale.

07813 169811
tiffany.crisp@hotmail.com
@tiffany_crisp

STUDIO-OR-WORKSHOP



11.00-16.00						
M	T	W	T	F	S	S
2	3	4	5	6	7	8
9	10	11	12	13	14	15
16	17	18	19	20	21	22
23	24	25	26	27	28	29

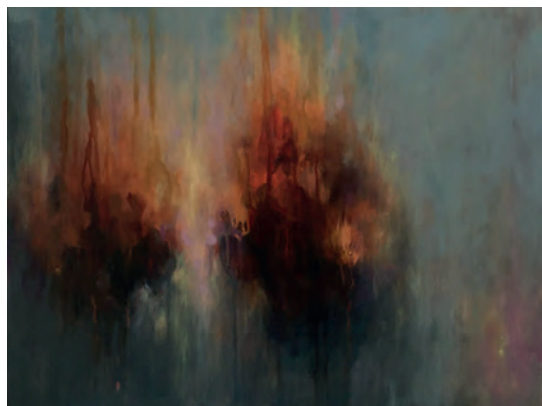
16 Studio 28A

28a Westbourne Place, Hove BN3 4GN

We warmly welcome you to our thriving art studios situated in the quiet back street of Westbourne Place. We have 10 gifted artists of varying styles so there's something for everyone. Our studio has the added distinction of including several artists who have been featured on TV and have a growing national and international presence within the art world. Most of us are super friendly so make sure you come and visit!



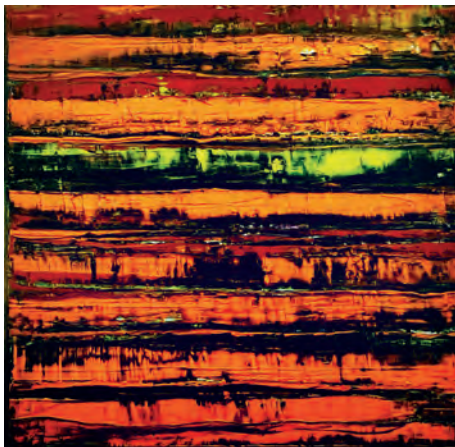
Josie Goddard



Abigail Bowen

Holly Winter *Painting*
David Barker *Painting*
Morag Caister *Painting*
Sez Carlisle *Mixed media*
Diana Fosbery *Painting*

Josie Goddard *Painting*
Suzi Lowe *Painting*
VonHoz *Drawing*
Tamara Wildash *Mixed media*
Abigail Bowen *Painting*



David Barker



Morag Caister

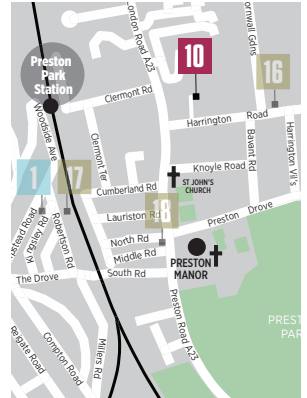
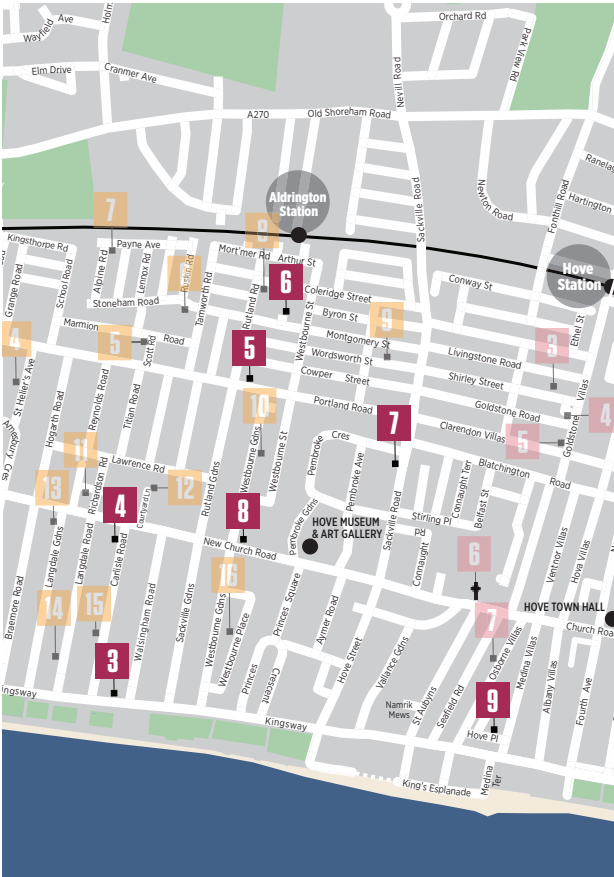
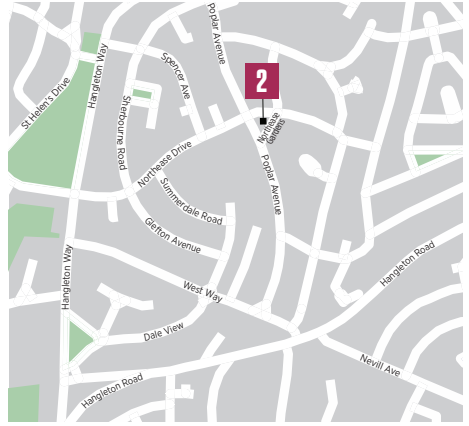
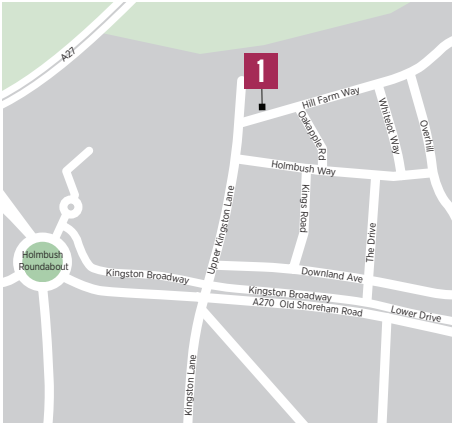
07943 891752
davej_barker@hotmail.co.uk

STUDIO-OR-WORKSHOP



10.00 - 17.00

M	T	W	T	F	S	S
2	3	4	5	6	7	8
9	10	11	12	13	14	15
16	17	18	19	20	21	22
23	24	25	26	27	28	29



1 Dorota Biniecka Art Southwick

9 Hill Farm Way, Southwick, Brighton BN42 4YJ



Cluster of landscapes Dorota Biniecka and Mervyn Hemmway

Located at the edge of the Downs, this Southwick Hill house invites you to combine browsing art with a walk in nature. A large collection of oil landscapes and portraits as well as mixed media pieces are displayed in a gallery

style configuration throughout the ground floor. The hosts, **Dorota and Mervyn**, are long time friends and self-taught painters who bonded over art at a time they were not living their fully creative lives.

07927 018031
dorota@dorotabiniecka.art
www.dorotabiniecka.art

HOUSE

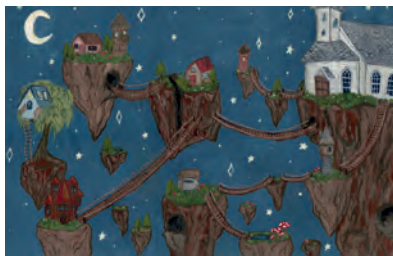


11.00 - 17.00

M	T	W	T	F	S	S
2	3	4	5	6	7	8
9	10	11	12	13	14	15
16	17	18	19	20	21	22
23	24	25	26	27	28	29

2 The Blue House

11 Northease Gardens, Hove BN3 8PR



Illustrated Planet Kizzie Mervyn Jones

The Blue House is opening its doors for the very first time to showcase a variety of local artists work from ceramics to photography, illustration to mosaics. There's something for everyone.

Maddie Camp Print making
Harrison Coughlan Illustration
Ellie Drake-Lee Mosaic

07495 502229
kizziemai@icloud.com
www.instagram.com/thebluehouse.hove/

HOUSE



Esme Gilbert Painting
Chris Heape Ceramics
Sally Lightburn-Jones Ceramics
Kizzie-Mai Lightburn-Jones Illustration

Ewan Search-Whittaker Photography

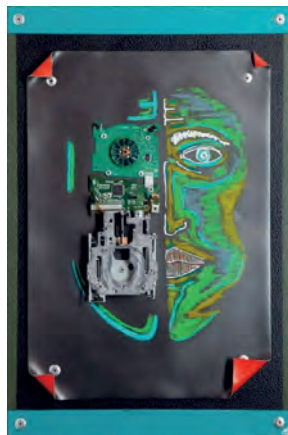
Homemade baked goods are available to enjoy in our lovely garden as well. (Well behaved dogs welcome)

11.00-17.00

M	T	W	T	F	S	S
2	3	4	5	6	7	8
9	10	11	12	13	14	15
16	17	18	19	20	21	22
23	24	25	26	27	28	29

3 ACT of ART

Flat 2, 201 Kingsway, Hove BN3 4FD



Humanoid - Human creature, being or robot, with human form or characteristics: Joao Rodrigues

João Rodrigues fits in to the new paradigms of modernity, passing through the generalisation of the aesthetic experience of everyday phenomena and the absorption of civilisation of which we highlight the hybrid resulting from the dilution of the organic and the mechanical digital. Modernity brings new approaches and materials.

07580 714154
jprartengland@gmail.com
www.myartact.com

HOUSE



12.00-18.00

M	T	W	T	F	S	S
2	3	4	5	6	7	8
9	10	11	12	13	14	15
16	17	18	19	20	21	22
23	24	25	26	27	28	29

4 Clare Maria Wood

68 Carlisle Road, Hove BN3 4FS



Recessed Sand Clare Maria Wood

I see my paintings and hand pulled monoprints as a way of conveying an emotional connection to the land, sea, and sky. I use sensitive mark-making combined with bold, gestural strokes, to transcend the viewer to space beyond physical sight. Perhaps a place of nostalgia and wonder. Clare's abstract paintings have been selected for shows at the Royal Academy of Arts, The Royal Institute of Painters in Watercolours and the Society of Women Artists.

07793 362991
clare.m.wood@ntlworld.com
www.claremariawood.co.uk

HOUSE



12.00-18.00

M	T	W	T	F	S	S
2	3	4	5	6	7	8
9	10	11	12	13	14	15
16	17	18	19	20	21	22
23	24	25	26	27	28	29

5 Katherine Richards Art Gallery

111 Portland Road, Hove BN3 5DP

Admission: Patrick Morales-Lee



Just call my name and I'll be there: Marjolein Burbank

01273 980711
art@katherinerichards.co.uk
www.katherinerichardsartgallery.co.uk

GALLERY



10.00 - 16.30							
M	T	W	T	F	S	S	
2	3	4	5	6	7	8	
9	10	11	12	13	14	15	
16	17	18	19	20	21	22	
23	24	25	26	27	28	29	



Brasserie Louise Robinson



The Joke: Katherine Richards

Louise Robinson *Mixed media*
Katherine Richards *Sculpture*
Phoebe Boddy *Drawing*
Alvaro Tamarit *Mixed media*
Liz Tiranti *Mosaic*
Tim Bates *Ceramics*
Christopher King *Sculpture*
Naomi Keshet *Photography*
Joanneke Carbaat *Mixed media*
Marjolein Burbank *Mixed media*
Nigel Sharman *Painting*
Patrick Morales-Lee *Painting*

6 Proper Copper Design – Hayloft

85a Montgomery Street, Hove BN3 5BD



Copper and Brass Showroom Proper Copper Design

We are proud to be opening our new showroom, The Hayloft by **Proper Copper Design**, to the city of Brighton.

Come and tour our workshop, visit the *Wild Woman Awake* exhibition by local mural artist **Charlie.R** and immerse yourself

in art inspired by a oneness with nature.

Join us for a celebration and showcase of our handcrafted luxury homeware; copper showers, taps, handles and furnishings.

01273 973650

team@propercopperdesign.com
www.propercopperdesign.com

STUDIO-OR-WORKSHOP



10.00 - 16.00

M	T	W	T	F	S	S
2	3	4	5	6	7	8
9	10	11	12	13	14	15
16	17	18	19	20	21	22
23	24	25	26	27	28	29

8 St Christopher's Prep

33 New Church Road, Hove BN3 4AD



Self Portrait: Amber, Year 5

An exhibition of a variety of work showcasing the creative talents of the pupils of St Christopher's Prep. Our children range from Reception to Year 8, and we will be exhibiting work from our very youngest through to our senior pupils, one of whom has recently been awarded an Art Scholarship to Brighton College. There will be refreshments and performances by some of our talented musicians.

01273 735404

headspa@stchristophershove.org.uk
www.stchristophershove.org.uk

EDUCATIONAL-INSTITUTION



12.00-15.00

M	T	W	T	F	S	S
2	3	4	5	6	7	8
9	10	11	12	13	14	15
16	17	18	19	20	21	22
23	24	25	26	27	28	29

7 Maria Kuipers & John Jennings

Side entrance, 36 Sackville Road, Hove BN3 3FB



Constructed forms with 3 objects Maria Kuipers



Pink after John Jennings

Award winning local artist **Maria Kuipers** alongside guest London artist **John Jennings**. Both established abstract painters presenting a new body of contemporary work.

Maria Kuipers Mixed media paintings

John Jennings Paintings

Paintings and Limited Edition giclee prints for sale

Home exhibition and studio located in a stunning garden setting.

The Lifestream Acapella Gospel Group (pop, bluegrass, R and B, Jazz Gospel) Sundays 8th and 29th, 2-5 pm in the garden (weather permitting).

Open by appointment at other times.

07887 663903

mariamistletoe@gmail.com
www.mariakuipers.com

HOUSE



12.00 - 17.00

M	T	W	T	F	S	S
2	3	4	5	6	7	8
9	10	11	12	13	14	15
16	17	18	19	20	21	22
23	24	25	26	27	28	29

9 Paul Houlton Studio

6 Hove Place, Hove BN3 2RG



ARTHUR'S CAFE Paul Houlton

Paul Houlton opens his Hove studio to the public for the first time, with a retrospective selection of work from the last five decades in the Western art tradition, with influences including Picasso, Vorticism and more recently Japanese Ukiyo-e. Paul describes himself as a 20th

century artist that has strayed into the 21st.

Paul Houlton

Paintings, drawings and prints

Events: Drawing and portrait workshops

Artist guided tour of the exhibition: Weekdays (except Mondays) at 12 noon.

01273 733666

paulhoulton@bulldoghome.com

www.paulhoulton.art

STUDIO-OR-WORKSHOP



11.00 - 17.00

M	T	W	T	F	S	S
2	3	4	5	6	7	8
9	10	11	12	13	14	15
16	17	18	19	20	21	22
23	24	25	26	27	28	29

10 Wykeham Lodge

Wykeham Lodge, 7 Harrington Road, Brighton BN1 6RE



UNITED BY SARAH CAMERON

Sarah Cameron Artist, writer, performer

Experiments in Emotion: Film Performance Sculpture Poetry

07813 207848

chalmerscameron@icloud.com

www.sarahcameron.scot

HOUSE



10.00 - 15.00

M	T	W	T	F	S	S
2	3	4	5	6	7	8
9	10	11	12	13	14	15
16	17	18	19	20	21	22
23	24	25	26	27	28	29

11 The Red Door

37 Barnett Road, Hollingdean, Brighton BN1 7GJ



KAREN THOMAS

Karen and Helen return with an eclectic and exciting mix of 12 artists with contrasting yet complementary styles.

With high levels of skill and detail, works include still life photography, sculptural ceramics, lighting and functional ware, painting, sculpture, fine jewellery, abstract reliefs, and metalwork.

In the sunny garden there will be workshops in willow weaving, cyanotype, and repairing and reviving clothing and textiles.

You can also enjoy homemade treats, and experience an experimental interactive soundscape.

01273 507097

contact@karentilley.co.uk

www.instagram.com/the_red_door_brighton/

HOUSE



11.00 - 16.00

M	T	W	T	F	S	S
2	3	4	5	6	7	8
9	10	11	12	13	14	15
16	17	18	19	20	21	22
23	24	25	26	27	28	29



**PAUSE
THE
ZOOM
CALLS.**



**LEARN TO
PAINT.**

Discover over
300 art and craft
short courses at
westdean.ac.uk

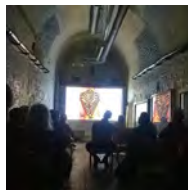


WEST DEAN COLLEGE
ARTS & CONSERVATION

SHOP*GALLERY*MAKE

AT
ATELIER
BESIDE THE SEA

COMMUNITY • HIRE • TALKS • EVENTS



Atelier Beside the Sea is brought to you by the creators of the MADE shows and Brighton Art Fair - Jon Tutton and Sarah Young. Our new arts venue is situated on Brighton Beach across 3 seafront arches and includes a shop, galleries, and teaching, community and events spaces.

WE AIM TO CREATE A HAPPY, UNIQUE AND ENGAGING HOME FOR CREATIVITY.



OPEN
EVERY DAY
11AM TO 5PM



For full details please visit **WWW.ATELIERBRIGHTON.CO.UK**

BRIGHTON BEACH, 165 KINGS ROAD ARCHES, BN1 1NB



Beyond Brighton

There are 22 venues sited outside Brighton and Hove.

Starting at Rottingdean and going East to South Heighton, the **Coastal Trail** has four venues.

Ditchling has nine venues sited in the centre of the village, with another two at nearby Streat.

There are six **Independent** venues, at Woodingdean, Lewes, Hassocks, Stanmer and Devils Dyke.

ART WAVE

3rd - 18th September

Visit artists & makers in
Lewes, Newhaven, Seaford
and the surrounding villages

Penny Boylan - Seaford Trail



Save the date
artwavefestival.org
📷 @artwavefestival

A Visit Lewes event
visitlewes.co.uk
📷 @visit.lewes


**VISIT
LEWES**
COAST & COUNTRY



Heading east past Brighton Marina, the black Smock Windmill heralds Rottingdean and Ovingdean, where artists, writers and thespians, past and present, entice you along downland paths to heritage landmarks.

The newly refurbished Grange Art Gallery hosts a wide variety of contemporary art and craft makers, while puppet theatres lurk inside the windmill on Beacon Hill. Then head eastward along the coast, stopping at Saltdean and South Heighton Pottery Studios.

Travel Information

Walking The undercliff walk from Brighton Marina gives access to Greenways and Rottingdean.

Bus Rottingdean 2/2A, 12/12A/12X, 14/14B/14C, 27, 27A, 47, (57 Sun only). Woodingdean 2, 22 & 52. For Newhaven, take the 12 Brighton to Eastbourne bus. Ask for Denton Corner for South Heighton.
www.buses.co.uk

Rail Trains from Brighton and Lewes to Newhaven Town.

Car From Brighton follow the A259 to Rottingdean and Newhaven. From the A23, take the A27 towards Lewes, exit at Sussex University on the B2123 to Woodingdean and Rottingdean.

Sponsors

Rottingdean Heritage
sponsor The Grange Art Gallery and The Windmill

1 Tall Tales from the Windmill

Rottingdean Windmill, Beacon Hill, Rottingdean BN2 7LB



Can a Windmill's sweeps catch fire if they go round too fast? Do faeries whistle to catch the wind?

And what do Smugglers, a Cricket Match and a Buried Warrior have in common?

Are they fact, fiction or simply Tall Tales!

Set within Rottingdean's iconic Smock Mill, three storytellers explore myth, legend and historical truths in a selection of hand-drawn panoramic Crankie Theatres.

Liza Stevens *Illustration*

Philip Alexander Sugg *Illustration*

Amanda Rosenstein Davidson

Illustration

07763 584330

amandasdaavidson@gmail.com
www.rottingdeanheritage.org.uk

EDUCATIONAL-INSTITUTION



12.00-16.00

M	T	W	T	F	S	S
2	3	4	5	6	7	8
9	10	11	12	13	14	15
16	17	18	19	20	21	22
23	24	25	26	27	28	29

2 The Mix at The Grange

The Grange Gallery, The Green, Rottingdean, Brighton BN2 7HA



Twelve artists and craftspersons from across the country converge on the Grange Gallery to present a mixed show of paintings, drawings, etchings, surreal boxes, fantasy constructions, hand-made books, garden sculpture... and madcap patchwork mice.

Come and enjoy the fabulous arts and crafts then have lunch, or tea and cake, in a beautiful, award-winning garden at the Grange Tea Garden.

The exhibition runs from Wednesday 4th - Sunday 29th May. Admission Free.

07708 754210

thegrangegallery@gmail.com
www.rottingdeanheritage.org.uk

GALLERY



Wed-Sat 10.00 - 16.00 Sun 13.00 - 16.00

M	T	W	T	F	S	S
2	3	4	5	6	7	8
9	10	11	12	13	14	15
16	17	18	19	20	21	22
23	24	25	26	27	28	29

3 Woofing Fabulous Pottery

8 Hilgrove Road, Saltdean, Brighton BN2 8QG



Duke: Woofing Fabulous / Liza Morton

Woofing Fabulous Pottery seaside garden studio in Saltdean.

Come and visit **Liza Morton** and see her creating clay sculptures in her own studio surrounded by her lovely seaside garden. Hidden amongst the garden and studio are her characterful handbuilt dogs, animals and birds. Each sculpture has their own personality that will hopefully make you smile.

With the opportunity to see a few other local artists work.

This hidden gem is open for one weekend only.

01273 858584

liza@lizamorton.com
lizamorton.com

STUDIO-OR-WORKSHOP

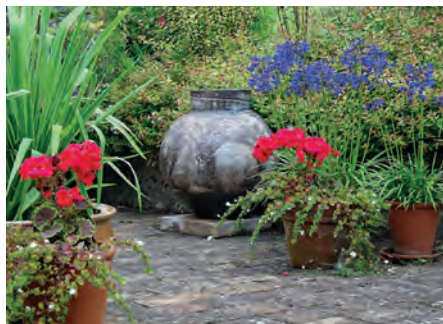


11.00-17.00

M	T	W	T	F	S	S
2	3	4	5	6	7	8
9	10	11	12	13	14	15
16	17	18	19	20	21	22
23	24	25	26	27	28	29

4 South Heighton Pottery

Heighton Road, South Heighton, Newhaven BN9 0HL



Chris Lewis

Chris Lewis will be showing new work fired recently in his large wood fired kiln. This will include pots, garden ceramics and sculpture.

Our special exhibition will be another chance to see work by **Ursula Mommsen**, who started the pottery 70 years ago together with her sculptor husband **Norman Mommsen**. This show will feature work from all stages of her long career.

The exhibition will continue for the first three weekends in June.

07754 814067

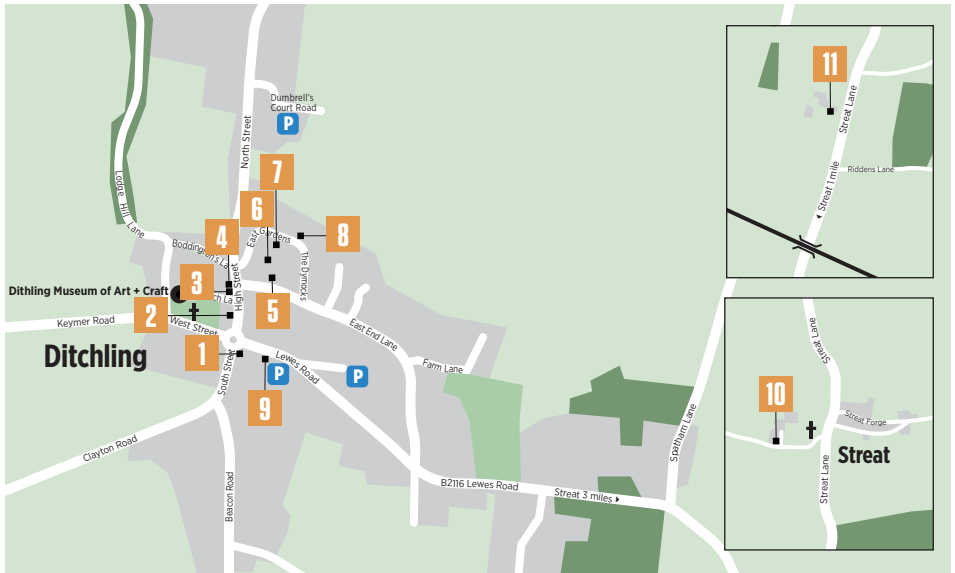
chris@chrislewisceramics.com
www.chrislewisceramics.com

STUDIO-OR-WORKSHOP



11.00 - 17.30

M	T	W	T	F	S	S
2	3	4	5	6	7	8
9	10	11	12	13	14	15
16	17	18	19	20	21	22
23	24	25	26	27	28	29



Art in Ditchling (AiD) offers you a warm welcome to the AOH Ditchling Trail 2022.

Ditchling, nestled within the South Downs National Park, is a historic village playing host to a selection of contemporary artists, craftspeople and designer/makers, showcasing a range of high quality work. Visit their home galleries and gardens, studios and workshop venues for Artists Open Houses 40th Anniversary.

Choose to spend a beautiful day visiting and meeting the artists and makers; Ditchling Museum of Art & Craft and the cafes and pubs, offering delicious meals and refreshments.

Venues will be open each weekend in May and additionally Fridays: 13th/20th/27th May. Please check the AiD and/or AOH websites and brochures for details.

www.artinditchling.co.uk
[@art_in_ditchling](https://twitter.com/art_in_ditchling)

Travel Information

Walking South Downs Way crosses Ditchling Beacon. Easy footpaths connect venues in and around the village.

Bus Infrequent, please check with Brighton & Hove buses. www.buses.co.uk

Rail Hassocks Station. Thirty minute walk in an easterly direction to Ditchling. Taxi located on the west side of the station.

Car 3 miles from A23 via the B2112 or B2116 from Hassocks. Parking is limited but free - village carpark and around village.

Bike Hire Hassocks community Cycle Hire - Opens for prearranged hires. www.hassockscommunitycyclinghire.com

Sponsors

Ditchling Museum of Art & Craft
www.ditchlingmuseumartcraft.org.uk

White Horse Inn www.whitehorseditchling.com

The Bull Hotel www.thebullditchling.com

Chatts Estates www.chattstates.co.uk

Artelium Wine Estate www.artelium.com

Pruden & Smith www.prudenandsmith.com

The Nutmeg Tree Tea Room www.thenutmegtree.co.uk

The Green Welly Cafe www.thegreenwellycafe.co.uk

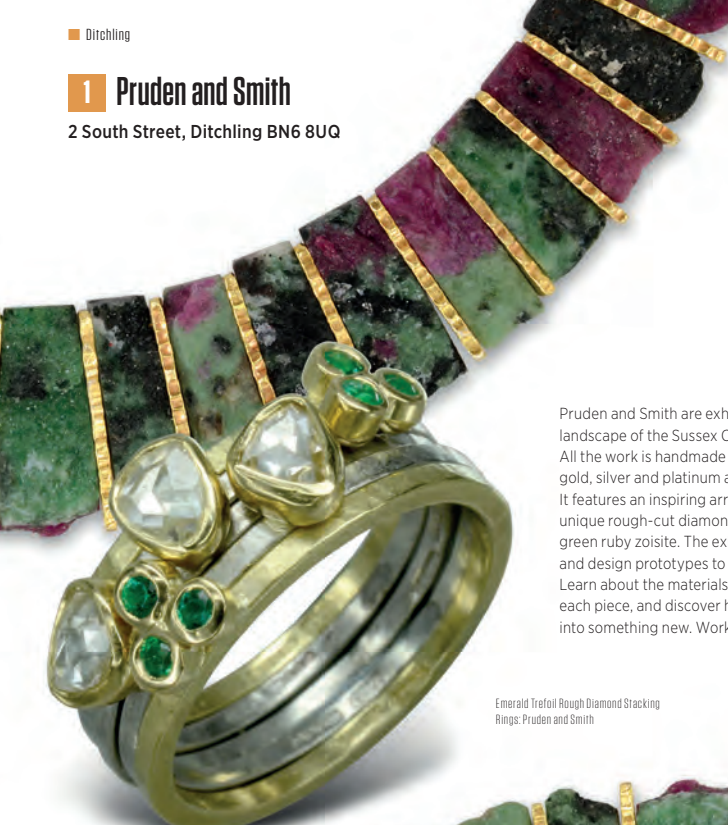
Philip Dunn Artist www.windowgallery.co.uk

The Den Workshop @cooksbridge_cabins

Mae's Farm www.themacsfarm.co.uk

1 Pruden and Smith

2 South Street, Ditchling BN6 8UQ



Emerald Trefoil Rough Diamond Stacking Rings: Pruden and Smith



Two Colour Gold Diamond Trap Eternity Ring: Pruden and Smith

Pruden and Smith are exhibiting jewellery inspired by the natural landscape of the Sussex Coast, designed by **Rebecca Smith**. All the work is handmade onsite by the P&S team using recycled gold, silver and platinum and set by Head Jeweller **Simon Alexander**. It features an inspiring array of specially cut gemstones including unique rough-cut diamonds, Brazilian emerald, and striking red and green ruby zoisite. The exhibition showcases limited edition pieces and design prototypes to inspire your jewellery design journey. Learn about the materials, techniques, and processes used to create each piece, and discover how to recycle your old unworn jewellery into something new. Workshop tours will run throughout the festival.

01273 846338
info@prudenandsmith.com
www.prudenandsmith.com

STUDIO-OR-WORKSHOP



Mon - Sat 10.00-17.00 Sun 11.00-16.00

M	T	W	T	F	S	S
2	3	4	5	6	7	8
9	10	11	12	13	14	15
16	17	18	19	20	21	22
23	24	25	26	27	28	29

2 The Annexe @ Black Dog Hill

17-19 High Street, Ditchling BN6 8SY



Bosom Haour - After Robert Penny Sanderson

The Black Dog Hill shop, is a new venue for the Annexe group, and is situated on Ditchling's pretty High Street. Travelling north from the crossroads in the centre of the village, it's about 10 doors up on the left-hand side.

Penny Sanderson, Claire Scott and Vee Pease will be exhibiting original artwork, prints, beautiful jewellery, stunning ceramics, home accessories, gifts and general naughtiness from The Ditchling Fudge Fairy... So something for everyone!

07985 125239
pennysanderson03@gmail.com
pennysanderson.com

COMMERCIAL-PREMISES



11.00 - 17.00						
M	T	W	T	F	S	S
2	3	4	5	6	7	8
9	10	11	12	13	14	15
16	17	18	19	20	21	22
23	24	25	26	27	28	29

3 Venue

35 High Street, Ditchling BN6 8SY



Branch Head Pins - silver, fine silver & feathers at Stringell

ali Stringell Mixed media

Meryl Stringell Painting

No.35 is the home and studio of designer/maker, ali Stringell. ali opens her studio to showcase a selection of silverware, jewellery, sculptures and drawings in ink, charcoal and conté.

She is joined by her mother, Meryl, exhibiting landscape and still life paintings, in oil.

This year will also see the publication of Ali's first children's book 'Miss Moo-Poo', published by Railway Land Press.

ali@st-ringell.com
www.merylstringellart.co.uk
@alstringell @stringellmeryl

HOUSE



11.00 - 17.00						
M	T	W	T	F	S	S
2	3	4	5	6	7	8
9	10	11	12	13	14	15
16	17	18	19	20	21	22
23	24	25	26	27	28	29

4 No.37

37 High Street, Ditchling BN6 8SY



Artist Jo Watters-Pawlowski, image credit: krisjowwks.com

Jo Watters-Pawlowski Artist

Located in the heart of Ditchling High Street, No.37 is the home and studio of artist Jo Watters-Pawlowski. From her beautiful High Street house gallery, for the 14th year with AOH, Jo will showcase abstract paintings.

07926 082345
jowp.art@gmail.com
www.jowatterspawlowski.com

HOUSE



Created from 2020, they draw inspiration from water; riverbeds and shoreline.

Comments from AOH May 2019: 'stunning work - love your use of different media and marks' 'beautiful and very moving work - thank you'

11.00 - 17.00						
M	T	W	T	F	S	S
2	3	4	5	6	7	8
9	10	11	12	13	14	15
16	17	18	19	20	21	22
23	24	25	26	27	28	29

5 FourFree

Chy Morvah, 25 East End Lane, Ditchling BN6 8SX



Escape Miranda Ellis

FourFree, in their 12th year, have now relocated from Dymocks Studio to a charming studio and garden at the start of an artistic hub of interconnected gardens and studios. Host, **Miranda Ellis** showcases her lockdown garden paintings with South Downs

escapes. In the garden, the other **Miranda Ellis**'s light-catching glass contrasts with **Jane Sarre**'s refined and minimal sculpture and the beautiful and quirky garden ironwork of **Richard Heanley**. A world to re-discover!

07756 883240
me@mirandaellis.com
www.mirandaellis.com

STUDIO-OR-WORKSHOP



11.00 - 17.00						
M	T	W	T	F	S	S
2	3	4	5	6	7	8
9	10	11	12	13	14	15
16	17	18	19	20	21	22
23	24	25	26	27	28	29

6 Blue Shed Studio

6 East Gardens, Ditchling, Hassocks BN6 8ST



Michelle Dufaur

The Blue Shed Studio is pleased to be showing, for the first time, the work of designer and printmaker **Ash Hutchinson**, composer **Will Todd's** *A Symphony of Letters* and sculptor **Michelle Dufaur's** metal bird sculptures.

Also exhibiting are **Caroline Todd's** 365 paintings from life, completed during 2020, **Ian Chisholm's** lutherie including guitars, mandolins and other instruments, and **David Browne's** drawings, prints and sculptures.

Exhibition sponsored by Sally Williams Architects

01273 842588
dmbartist@icloud.com
www.blueshedstudio.co.uk

STUDIO-OR-WORKSHOP



11.00 - 17.00

M	T	W	T	F	S	S
2	3	4	5	6	7	8
9	10	11	12	13	14	15
16	17	18	19	20	21	22
23	24	25	26	27	28	29

7 Dymocks End Studio

Dymocks End, 30 East Gardens (Shortcut via Blue Shed), Ditchling BN6 8ST



Louise Dale Chalmers

Vibrant painting, immersive silk sculpture installation, drawing, basketry and fibre art in a hidden studio and tranquil garden in sight of the Downs. An energetic and dynamic new venue, linked by secret entrances to both The Blue Shed and also to Four Free, now showing in the adjoining venue.

Louise Dale Chalmers (host):
Immersive silk and steel installation, paintings, ink drawings, ceramic sculptures and silk scarves

Julie Rignell
Basketry and fibre art

Lisa Scholz
Abstract art

07583 341577
chalmers.lnr@gmail.com
www.louisedalechalmers.com

HOUSE



11.00 - 17.00

M	T	W	T	F	S	S
2	3	4	5	6	7	8
9	10	11	12	13	14	15
16	17	18	19	20	21	22
23	24	25	26	27	28	29

8 Studio 21

21 East Gardens, Ditchling BN6 8ST



Studio 21 Bernadina Lloyd / Sebastian Pedley

Bernadina opens her brand new studio in the heart of Ditchling for the first time (previously at Turner Dumbrell Workshops)

In the studio: **Bernadina Lloyd's** evocative paintings, life drawings, collages, giclée prints and handmade cards.

In the garden: **Sebastian J. Pedley** presents a sequel to his acclaimed blue High Street House; a walk-in construction - a portal to Seb's brain - showing drawings, paintings, objects and a light & sound installation.

07740 201392
info@bernadinallloyd.co.uk
bernadinallloyd.co.uk/

STUDIO-OR-WORKSHOP



11.00-17.00

M	T	W	T	F	S	S
2	3	4	5	6	7	8
9	10	11	12	13	14	15
16	17	18	19	20	21	22
23	24	25	26	27	28	29

9 ATTIC

Ditchling Village Hall, 18 Lewes Road, Ditchling BN6 8TT



Anglin for American Christianson

The long established Attic Art Club in Ditchling is an exceptionally talented mix of 30 Sussex Artists, producing a very varied selection of original work. There is just one long weekend to renew your acquaintance with this inspirational group and purchase great value art:

Friday 27th - Monday 30th May.
We open at 12.00 noon on Friday 27th, through to a special Evening View from 6pm-8pm with refreshments.
Monday 30th May we are open 10am to 5pm.

01273 504588
atticartclub1@gmail.com
www.atticartclub.co.uk

COMMUNITY



10.00 - 17.00

M	T	W	T	F	S	S
2	3	4	5	6	7	8
9	10	11	12	13	14	15
16	17	18	19	20	21	22
23	24	25	26	27	28	29

10 Streat Place Barn

Streat Place Barn, Streat, Nr. Ditchling BN6 8RU

The wonderfully rural setting of a medieval barn, home to Jinks and Steve, opens its big doors to everyone!

Jinks McGrath *Jewellery*

Steve Turner *Work in wood*

Lorraine Harrison *Painting*

Elaine Bolt *Ceramics*

Dominic Parrette *Baskets*

Ed Boxall *Prints and books*

Free live performances: 2.30pm,

Saturdays 7th and 21st May

Ed Boxall will perform his new

book along with some of his

poems and songs, for children

aged 3 to 12 but all welcome!



01273 890771

info@jinksmcgrath.com

jinksmcgrath.com

HOUSE



10.30 - 17.30

M	T	W	T	F	S	S
2	3	4	5	6	7	8
9	10	11	12	13	14	15
16	17	18	19	20	21	22
23	24	25	26	27	28	29

11 Art at Artelium

Artelium Wine, Malthouse Farm, Streat Lane, Hassocks BN6 8SA



Artelium are developing exciting collaborations between great artists and the country's most renowned winemakers. Their vision is to create a space where exceptional art and premium wine converge harmoniously, in the beautiful landscape of the South Downs.

Exclusively for AOH, **Judith Alder** presents for the first time her #30worksin30days created in April 2021. String Theory (And Other Things I Don't Understand) uses black ink on white paper and a continuous looped line. Each drawing is a development of the previous ones, with a theme of interconnectedness and the links, chains, networks, meshes and structures which form the basis of matter.

01273 569155

hello@artelium.com

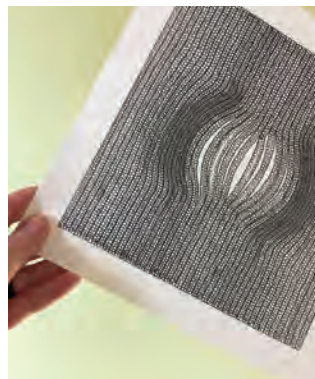
www.artelium.com/art

COMMERCIAL-PREMISES



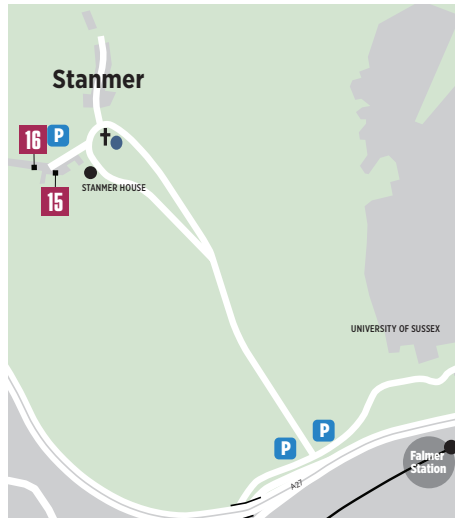
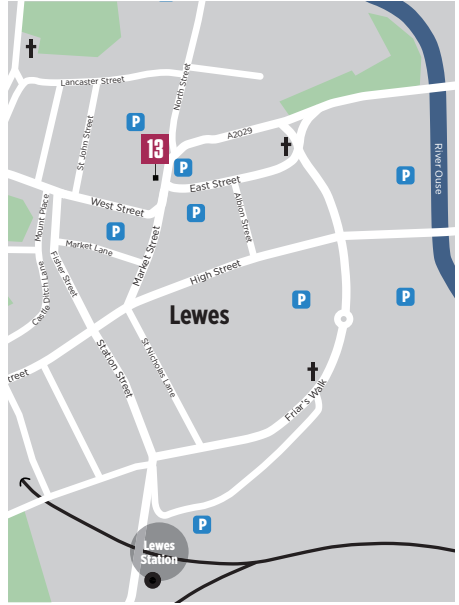
11.00-18.00

M	T	W	T	F	S	S
2	3	4	5	6	7	8
9	10	11	12	13	14	15
16	17	18	19	20	21	22
23	24	25	26	27	28	29



String Theory And Other Things I Don't Understand and Judith Alder

Independent (Sussex)



12 OpenArtSurgery

Woodingdean Medical Centre

BN2 6BA

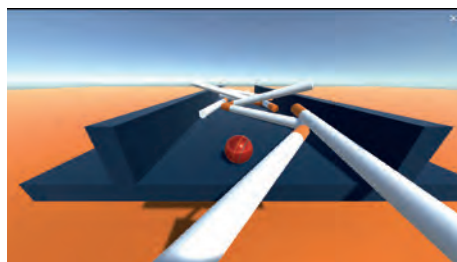
Unfortunately Open Art Surgery is now only able to participate as a 'Virtual Open House'.
<https://aoh.org.uk/may2022/virtual-open-houses/>
 It is NOT OPEN for in person visits.



Steroid part 2 (Time): docsurfdogs



Welcome to the virtual OpenArtSurgery: docsurfdogs



Smoke cessation: docsurfdogs

Woodingdean Medical Centre is using art and fun as health promotion tools.

We're creating installations at the practice and online (from April).

The artworks and projects will be fundraising for additional patient services and to deliver the projects that you want us to keep working on.

Darren Emilianos is a GP and artist, using art as a tool to explore some of life's puzzles while aiming to do some good.

Come and explore online.

Heart disease and strokes are major health problems where prevention can make a difference.

The NHS is under strain and we want to do more.

- Learn about cardiovascular disease prevention - to reduce the risks of heart disease and strokes.

- Learn about and test our blood pressure screening, monitoring tools and systems.

Access the online gallery, by testing and beating our early prototype health promotion game - currently under construction.

(the video shows some of the very early foundations - lots more work to do before May).

We want to know which aspects you think we should keep working on.

We want you to spread those ideas to help us fund them.

This is an iterative process - we need your help and feedback to shape the ideas.



Woodingdean Medical Centre: docsurfdogs

makeupyourrownmind@gmail.com
www.docsurfdogs.com/openartsurgery
www.docsurfdogs.com/openartsurgery

COMMUNITY

NEW

M	T	W	T	F	S	S
2	3	4	5	6	7	8
9	10	11	12	13	14	15
16	17	18	19	20	21	22
23	24	25	26	27	28	29

13 Chalk Gallery

4 North Street, Lewes BN2 2PA



Chalk Gallery

Established in 2005, Chalk Gallery is one of the first artist-led cooperative galleries in the UK and one of the leading contemporary galleries in the culturally-rich county town of Lewes.

A well-loved destination for art lovers and embedded in the local art community, Chalk Gallery is renowned for nurturing local artistic talent and empowering its artists, who are at various stages in their careers, to evolve in a friendly, supportive community.

01273 474477
chalkgallerylewes@gmail.com
www.chalkgallerylewes.co.uk

GALLERY



11.00 - 16.00							
M	T	W	T	F	S	S	
2	3	4	5	6	7	8	
9	10	11	12	13	14	15	
16	17	18	19	20	21	22	
23	24	25	26	27	28	29	

14 Sue Collins Art

4 Clayton Avenue, Hassocks BN6 8HB



Towards the Hills Sue Collins Art

Kate McMinnies *Ceramics*
Katherine Lawrie *Jewellery*
Nina Smith *Glass*
Sue Collins *Print making*

07756 420794
suecollinsart@hotmail.com
suecollinsart.com

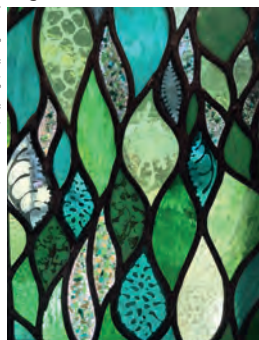
STUDIO-OR-WORKSHOP



10.00 - 17.00							
M	T	W	T	F	S	S	
2	3	4	5	6	7	8	
9	10	11	12	13	14	15	
16	17	18	19	20	21	22	
23	24	25	26	27	28	29	

15 Stanmer Creatives

Stanmer Crafts Museum, Stanmer Park Village,
Brighton BN1 9SE



Enchanted Enamels Romi Shadler

Romi Shadler Reingold
Enchanted enamels
Eilileen Kendrick-Flynn
Mixed media
Sara Harris
Glass artist and restorer
Rosie Kennington
Painting
Seana Mallen *Painting*
Luna Moon Mosaics
Handcrafted crockery mosaics
Beggs Forgeworks
Bladesmith
Urban Forage
Foraging workshops
David Munns
& Peter Symons
Film installation
Maxine Allan
Mixed media
...plus guests!

Ensclosed in Stanmer Park Village, lies Stanmer Crafts Museum, offering eclectic art and crafts. Meet the resident creatives and guests, plus workshops, demonstrations... and our perennial robins!

07980 863951
sarahharris743@gmail.com
www.stanmercreatives.com

STUDIO-OR-WORKSHOP



11.00 - 17.00							
M	T	W	T	F	S	S	
2	3	4	5	6	7	8	
9	10	11	12	13	14	15	
16	17	18	19	20	21	22	
23	24	25	26	27	28	29	

16 One Garden Brighton

One Garden Brighton, Stanmer Park, Brighton BN1 9SE



Silver Birch Leaves: Ellie Drake Lee

A walled garden, rediscovered and reinvented. Rooted in the past, it focuses on the inspiration for the future. We're opening the gates to a range of artists to display, and demonstrate their nature inspired work, including Ellie Drake Lee with Glass Garden Art, positioned around the themed gardens, and a range of creative workshops led by Brighton artists to get hands-on within the walled garden.

One Garden Brighton is free to enter and open daily.

01273 892028
hello@onegardenbrighton.com
www.onegardenbrighton.com

COMMUNITY



09.30 - 17.00							
M	T	W	T	F	S	S	
2	3	4	5	6	7	8	
9	10	11	12	13	14	15	
16	17	18	19	20	21	22	
23	24	25	26	27	28	29	

17 Devils Dyke Farm

Devils Dyke Farm, Devils Dyke Road, Brighton BN1 8YL



The way to Devils Dyke: Helen Brown

We are delighted to welcome you to this brand new venue just outside Brighton with stunning views over the South Downs and the City to the sea. We're located on the historic site of the terminus station of the Dyke Railway, complete with the original platform and this is the first time it's been open to the public since 1938!

Our fantastic range of artists and makers has been curated by **Lisa Green** of Treacle and Ginger, and we'll be hosting Fignant Arts as part of the Artists Open Houses 40th anniversary celebrations.

Local legends White Cloud Coffee will be providing tea, coffee and cakes and there's a licensed bar too.

Bekky May *Ceramics*

Chalk & Flint Ceramics *Ceramics*

Claire Houlihan *Painting*

Ecuweave *Textiles*

Emma Stanton Jewellery *Jewellery*

Ginger and Brown *Leatherwork*

Hayley Johnson *Photography*

Helen Brown *Print making*

Ken Eardley *Ceramics*

Kirstin Stride *Jewellery*

Lisa Green *Painting*

Myra Bianco *Painting*

Nicky Edwards *Painting*

Rarebit Design *Ceramics*

Ros Lymer *Textiles*

Sandy Infield *Painting*

Sarah Jones *Print making*

Saya McNairn-Yanagi *Ceramics*

Sue Penrose *Mosaic*

Suzanne Breakwell *Sculpture*

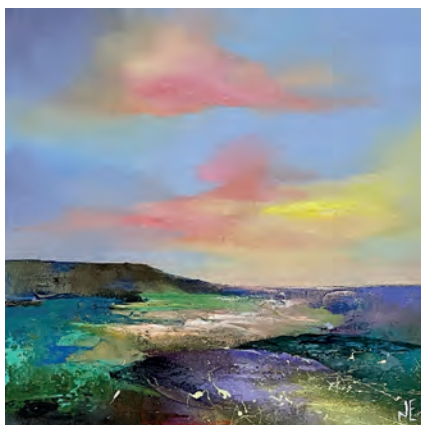
Wolfram Lohr *Leatherwork*



Ginger and Brown



Bekky May



Nicky Edwards

Plus

Fignant Arts *Towards the Light* exhibition - part of the AOH 40th Anniversary exhibitions.

The Fignant Arts Studio is a group of autistic, learning disabled and neurodiverse artists.

See page 10 for more about the Fignant Arts exhibition.

aoh@a23.org

www.instagram.com/devilsdykefarmaoh/

GALLERY



11.00 - 17.00						
M	T	W	T	F	S	S
2	3	4	5	6	7	8
9	10	11	12	13	14	15
16	17	18	19	20	21	22
23	24	25	26	27	28	29



JOHN WHITING



Brighton artist John Whiting welcomes you to his open studio adjoining 35 North gallery in the North Laine. For the Brighton Festival his studio will be open for viewing and the gallery space will be showing his seascapes and Brighton seafront paintings.

Saturday 7th to Saturday 28th May 2022
Open Thursday to Saturday 11am - 5.30pm

For enquiries contact Sharon Whiting, sw@sharonwhiting.com 07792 058039
www.35northgallery.com. 35 North Road, Brighton, BN1 1YB

Missshapes

The Making of Tatty Devine



Credit: Tatty Devine

A Tatty Devine and Crafts Council Touring Exhibition

**Hove Museum
& Art Gallery
5 Mar – 4 Sep
2022**

Open Mon, Thu, Fri & Sat
10am-5pm
Sun 1-4pm
Free admission
brightonmuseums.org.uk
03000 290900



Supporting public funding
**ARTS COUNCIL
ENGLAND**



Royal Pavilion & Museums Trust



Regency costumes
crafted from
paper and thread
by artist
Stephanie Smart

The
Regency
WARDROBE

Royal Pavilion
Brighton
19 March –
11 September
2022

Open Daily
Admission fee payable
brightonmuseums.org.uk
03000 290900



Royal Pavilion & Museums Trust



Supported using public funding by
ARTS COUNCIL
ENGLAND





TOWNER Eastbourne

Eileen Mayo

A Natural History

12 February to 3 July 2022

Free admission

townereastbourne.org.uk
@TownerGallery



ARTS COUNCIL
ENGLAND



Visit our shop in the Heart of Brighton's North Laine

Contemporary Handmade Jewellery



- Heirloom quality jewellery
- Bespoke design service
- Remodelling, repairs & alterations

www.julianstephens.com

NORTH LAINE JEWELLERY SCHOOL

Learn To Make Jewellery Here

www.northlainejewelleryschool.com

Evening classes and short courses



Visit us at:

37 GLOUCESTER ROAD

BRIGHTON BN1 4AQ

TEL: 01273 692110