

An abstract painting of a beach scene. In the foreground, two stylized figures stand on a white sandy beach. The figure on the left is wearing a pink and orange striped swimsuit, and the figure on the right is wearing a pink and purple swimsuit. In the background, a large, colorful bird with white wings and a red body is flying over a body of water. The water is depicted with various shades of blue, green, and yellow. The sky is a mix of light blue and white. The overall style is expressive and colorful, with visible brushstrokes and a vibrant palette.

Brighton, Hove & Beyond

# Artists Open Houses

Summer 2021

May 29, 30, 31

June 5&6 | 12&13 | 19&20 | 26&27

[aoh.org.uk](http://aoh.org.uk)



# GLYNDEBOURNE

## Join us online for our first Artists' Open Houses

- New work inspired by the Glyndebourne Festival from our Associate Artist Tom Hammick
- Our first all-women show around the theme of 'Forces of Nature'
- New Sculpture by Halima Cassell

### LIVE ONLINE EVENT

Saturday 19 June, 3.00pm

Meet the Maker: Tom Hammick  
talks art and opera

Register now  
[glyndebourne.com/art](https://glyndebourne.com/art)



[aoh.org.uk](https://aoh.org.uk)

No Ordinary Opera

*Guide Me Oh Moon*  
*Anne Trulove and The Rake, 2020*  
© Tom Hammick  
Courtesy Hammick Editions.  
All rights Reserved,  
Bridgeman Images.



## Sponsors



Aēsop®

Victor Boorman & Co.



## Supporters



### AOH Team

Judy Stevens  
Festival Director

Chris Lord  
Design and Development  
Director

Fiona McTernan  
Festival Manager, Ads and  
Sponsorship

Tim Jukes  
Brochure and Website Design /  
Development

Lisa Yousefi  
Digital Communications

Claire Quigley  
Finance Manager

Claire Wearn  
Project Manager/Curator

### Thank you

David Shrigley

Pandora George - Bullet PR

Angi Mariani - The Latest

Mark Tully - Gemini Press

Charlotte Barrow - Visit Brighton

Julian Caddy - Brighton Fringe

Donna Chisholm - BHCC

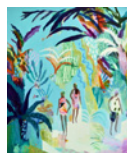
Also: Paul Clark and Roger Browning

## Contents

Introduction	3
AOH exhibitions and events	4
Travel	9
How to use the brochure	7
Brighton and Hove map	8
Large scale Brighton centre map	10

### Trails and venues in Brighton and Hove:

Beyond the Level	13
Brunswick	17
Central	21
Fiveways	25
Hanover	31
Hove	35
Kemptown	39
Seafront	43
Seven Dials	45
West Hove	51
Independent	57
Beyond Brighton	59



### Cover artist: Becky Blair

AOH 2021 brochure cover artist, Becky Blair, is a painter who creates imagery that has strength, but is equally fleeting and momentary. Her work presents an exploration that speaks of joy, using colour, texture and composition to render physical aspects of life that are intangible.

Cover artwork: Becky Blair- *Seaside Jungle*

Design: Chris Lord / Tim Jukes

Print: Gemini Press [www.gemini-press.co.uk](http://www.gemini-press.co.uk)

Artists Open Houses Ltd is a not for profit company.

Registration N° 5420675 (England and Wales)

Disclaimer: Whilst every care has been taken to ensure that the information given in this publication is accurate at the time of going to print, AOH cannot be held responsible for any variations, errors or admissions of which we have not been advised. We recommend that visitors confirm details for individual venues online before setting out. No recommendation is implied in any of the listings. Under no circumstances can AOH accept responsibility for any loss, damage or injury sustained by any member of the public visiting the Artists Open Houses festival.



#NEVERNORMALBRIGHTON

VISITBRIGHTON.COM

# WE'VE ALWAYS BEEN OPEN TO



# THE UNUSUAL

This is no normal city. Our museums, art galleries  
and shops are back. Let's make the most of them.

**NEVER  
NORMAL**  
*Brighton*



# Artists Open Houses

**SUMMER 2021**

**May 29, 30, 31 | June 5 & 6 | 12 & 13 | 19 & 20 | 26 & 27**

See our website for more info on listings and events:  
[www.aoh.org.uk](http://www.aoh.org.uk)

## Covid-19 guidelines for Open House visitors

All Open Houses have put measures in place to ensure a safe and enjoyable experience for visitors this year.

Please help us by following the guidelines:

- It is essential that you wear a face covering when visiting Open Houses this year (unless you are exempt and carry an NHS exemption form), so please make sure to bring one with you.
- Please use hand sanitiser on entry to each Open House and wash your hands when you can.
- Please maintain a 2 metre social distance from other visitors. Visitor numbers in all venues are restricted to follow current government law.
- Please wait to be invited in if the Open House is already at full visitor capacity.
- Visitors who have downloaded the NHS Track and Trace app will be asked to check in via a QR code at each venue. Other visitors will be asked to write down contact details on entry to venues.
- If you are asked to queue please do not block pavements or other house entrances. Please always keep a safe distance from others.
- Where relevant please follow one-way systems.
- Use contactless payments where possible.
- If you develop a new continuous cough or fever, please inform the venue, leave immediately and follow government advice on staying at home.

Please check regularly for updates: [www.aoh.org.uk](http://www.aoh.org.uk)

## Paying for artworks?

While many houses and studios now have card payment facilities, some may only accept cash or cheques.

**Follow AOH:**   

[www.aoh.org.uk/newsletter](http://www.aoh.org.uk/newsletter)

**A**rtists Open Houses is delighted to be welcoming visitors to our festival in its new June slot. Alongside Brighton Fringe, and following on from Brighton Festival, AOH is excited to be a part of the cultural renewal and recovery of our city. The AOH Festival will be offering visitors the first glimpse of brilliant new work from artists and makers emerging from the months of lockdown.

This year, many Open Houses are also offering art in the garden, so you can make the most of our move to a summer month viewing artwork outside in artists' gardens. As well as visiting an array of inspiring artworks in Open Houses in the city, you can take a day out to the countryside, exploring our new Beyond Brighton trail, leading out along the coast to villages across the Downs. And don't miss our wonderful student and emerging artists' exhibitions, sited in central Brighton shops.

Alongside the regular AOH Festival, where artists welcome visitors into their homes, studios and gardens, we are offering a new Virtual Open Houses strand. This includes online video tours round artists' houses and studios, as well individual online galleries. In real or virtual settings, you can hear about the artists' work, the processes of making and ideas behind it and buy work directly from the artists and makers.

The Artist Open Houses festival is a community event, encouraging participation from artists at all stages of their careers, from school and college students, through young emergent artists, to established and professional artists and makers. Many charities supporting artists with mental health issues, learning disabilities and older artists in residential care are taking part, reflecting their experiences of the last few months through their art.

More than ever this year it is important to support our local artists and makers who help to make Brighton and Hove the vibrant city that it is. Many AOH artists have made great use of the last few months, finding space to explore new ideas and ways of working. This festival offers the perfect opportunity to discover really exciting, inspiring and distinctive new work, as well as providing a great day out around the city and beyond.

All venues will be Covid safe, maintaining social distance guidelines, providing facemasks and hand sanitiser in accordance with government Covid-19 law.

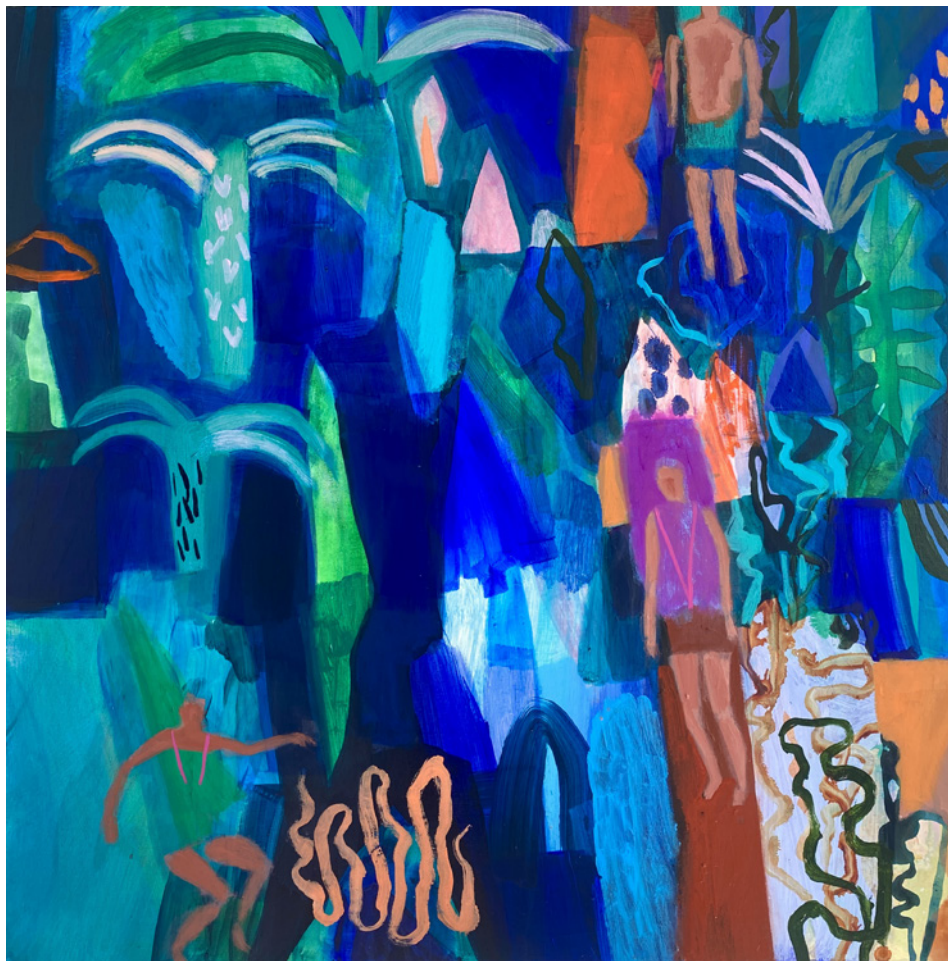
AOH would like to thank Arts Council England and Brighton and Hove City Council for their valuable support over the last few months.

**Judy Stevens**  
AOH Festival Director



# Becky Blair

Summer 2021 Cover Artist



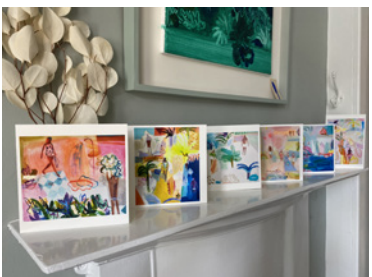
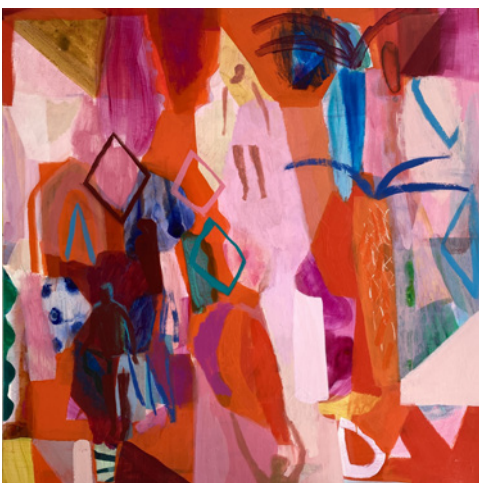
**B**ecky Blair, the Artists Open Houses Summer 2021 Brochure Cover Artist, is a painter who creates imagery that has strength, but is also fleeting and momentary. Her work presents an exploration that speaks of joy, using colour, texture and composition to render physical aspects of life that are intangible.

Becky has lived in Brighton since 1997 following a period of travel, being inspired by the wonders of India, Nepal, South East Asia and Australia, trekking through the Himalayas, riding pillion on an Enfield Bullet from Southern India to Katmandu and making friends along the way – all of which have helped to shape her as an artist.

Becky is a highly prolific artist who started her career in 1993; straight out of art school she created commissioned artwork for the restaurant chain Pizza Express. Since this she has been exhibiting her artwork in exhibitions worldwide, as well as working with fine art publishers, advertising campaigns, book covers and illustration.

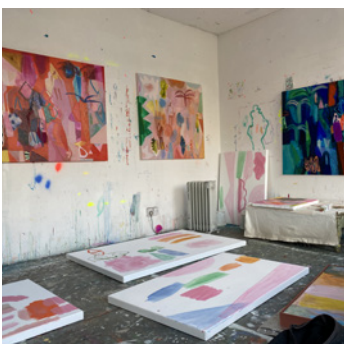
This past year has seen her work with a local potter Rachel Mary Entwistle and Australian fashion house Gorman, taking her vibrant style into handmade homeware and beautiful garments. You may have seen her collaboration in 2018 with Habitat, when they relaunched the Brighton flagship store. The Habitat design team transformed her pastel drawing into a giant hand tufted and carved wool rug.





Working out of her studio at Phoenix Art Space, Becky creates work for galleries throughout the UK and art fairs in London and Europe; she has had seven sell out solo shows over the past 10 years with galleries in Australia as well as being commissioned by private collectors worldwide.

For details of Becky's Open House, see page 34



Becky Blair - German photo by Hugh Fox. Saitaan Undercuff with Kiki, Weaving Shadow pattern dress by Becky Blair - German

# ALTERED

A

## An exhibition of work by local emerging artists

Weekends 5th – 27th June

Unit 18 Churchill Square Shopping Centre, Brighton, BN1 2RG

(Use entrance by Urban Outfitters - shop/gallery is on the right hand-side)

Flower Willow Ritchie, 2020



Celebrating emerging talent in Brighton & Hove, ALTERED invites artists to share ways in which they have experimented, modified or adapted their practices in light of recent restrictions; maybe resulting in new ways of thinking and making work.

With limited access to the studio, darkroom or workshop, artists have been navigating new approaches and, as a consequence, discovering innovative ways of working. This exhibition seeks to showcase recent works by artists setting out on their creative practices, reflecting ways in which they have continued to create and push boundaries despite the challenges of living through lockdown.

Work has been selected that has been created during the past year in recognition of the difficulties that the pandemic has brought to exhibition-making, especially for those in the early stages of their careers. The exhibition offers an important element in the post-lockdown return of culture to our city.

Exhibition curator, Claire Wearn, will be *in conversation* with the artists during the exhibition period. Brighton Fringe will be programming some complimentary performances in the gallery during the joint June festival period.

Please see [aoh.org.uk/summer2021/altered](https://aoh.org.uk/summer2021/altered) for updated info on performances and times.



Supported by Churchill Square / in partnership with Brighton Fringe

BRIGHTON  
FRINGE.

CHURCHILL  
SQUARE

11.00-17.00

M	T	W	T	F	S	S
24	25	26	27	28	29	30
31	1	2	3	4	5	6
7	8	9	10	11	12	13
14	15	16	17	18	19	20
21	22	23	24	25	26	27



# BRIGHTON SPIEGELTENT 2021

28<sup>TH</sup> MAY - 11<sup>TH</sup> JULY

6 WHOLE WEEKS OF SPIEGEL! AT THE OLD STEINE, BRIGHTON, BN1 1GY

**BROMANCE HERBIE'S JAZZ BREAKFAST SPIEGELCIRCUS**  
**BABY BAMBINOES THE REVOLVER REVUE CABARET BOHEME SING-A-LONG-A-MUSICAL**  
**THE ODDITORIUM BOURGEOIS & MAURICE GALS ALOUD DAVID HOYLE**  
**60 SECONDS TO SAVE THE WORLD THE GIANT BALLOON SHOW BIG QUIFFY BINGO LEGS**  
**IDA BARR VELMA CELLI LAURIE BLACK ALFIE ORDINARY FRILLS & SPILLS**  
**SASSY! SUPERSIZED LOUISE DEARMAN CABARET CONTINENTALE THE ADVENTURES OF THE BEARDED LADY**  
**CAPTAIN CAULIFLOWER & MISCHIEVOUS MOOSE LUCY HOPKINS BOSCO ELECTRONICO**

AND LOADS MORE!...

[WWW.BRIGHTONSPIEGELTENT.COM](http://WWW.BRIGHTONSPIEGELTENT.COM)



@BSpiegelTent

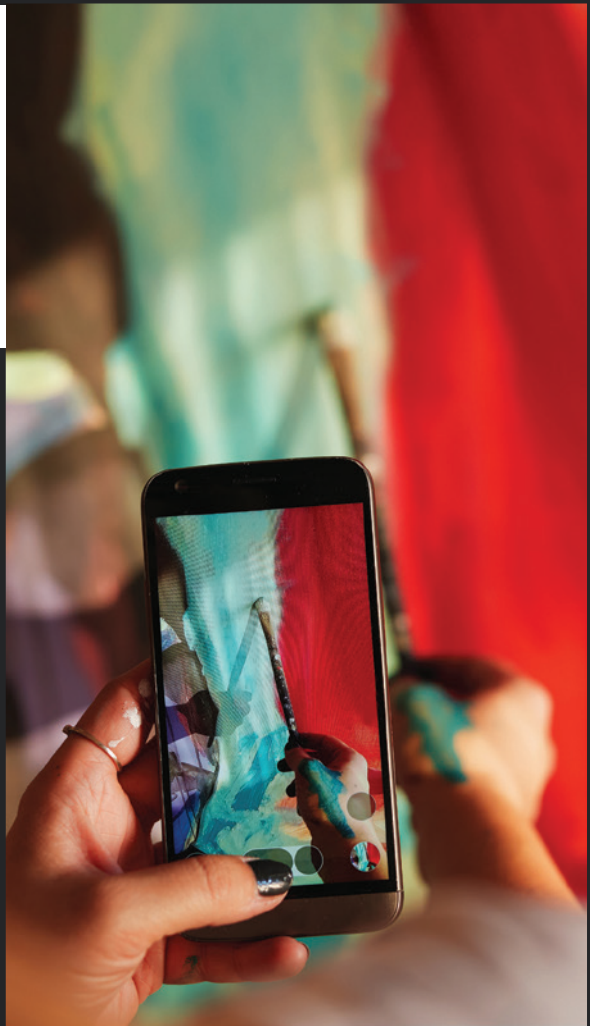


@brightonspiegelTent





**PAUSE  
THE  
ZOOM  
CALLS.**



**LEARN TO  
PAINT.**

Discover over  
300 art and craft  
short courses at  
[westdean.ac.uk](http://westdean.ac.uk)



**WEST DEAN COLLEGE**  
ARTS & CONSERVATION



# Travel information

## Bus

[www.buses.co.uk](http://www.buses.co.uk)

Travelling around the city to the Artists Open Houses couldn't be easier with the mobile-ticket app. For just £4.70 a day you can have unlimited travel on any Brighton & Hove Bus, including night buses. Tickets are available 24/7 and can be purchased to travel immediately or saved until later. Simply buy and activate your ticket, show the driver and away you go.

Download the Brighton & Hove: Buses App from Google Play or Apple App Store now.

## Rail

[www.nationalrail.co.uk](http://www.nationalrail.co.uk)

## Bike

Bike Share Scheme [www.btnbikeshare.com](http://www.btnbikeshare.com)

The system uses SoBi smartbikes, which are available for hire in central Brighton & Hove stretching along Lewes Road towards Brighton University and the University of Sussex. For any enquiries about using the scheme please contact [support@BTNBikeshare.com](mailto:support@BTNBikeshare.com) or call 01273 978096.

## Cars and Parking

[www.brighton-hove.gov.uk/content/parking-and-travel/parking](http://www.brighton-hove.gov.uk/content/parking-and-travel/parking)

Brighton & Hove City Council operates several off-street car parks and numerous on-street pay & display parking spaces across the city. Most on street parking is now pay by phone. You will need to register first at [paybyphone.co.uk/registration](http://paybyphone.co.uk/registration) or call 01273 458458 to do this.

Once registered you can pay using touch-tone or text, following the instructions on the meter. You do not need a smart phone for these methods. Although Brighton & Hove City Council has reduced the number of on street cash pay and display machines, there is usually one per street.

You can also pay at using cash at a PayPoint. Find the nearest paypoint at [www.paypoint.com/en-gb](http://www.paypoint.com/en-gb)

NCP have two centrally located NCP Brighton car parks at Church Street and Russell Road. [www.ncp.co.uk/parking-solutions/cities/brighton](http://www.ncp.co.uk/parking-solutions/cities/brighton)

## Opening Times

Most Open Houses are open May weekends from 11.00-17.00, but opening times may vary from venue, so it is best to check individual brochure listings. Some venues are also open on weekdays.

# How to use the brochure

The maps on the following pages (10&11), give an overview of venues within the city and the listings for those venues can be found from pages 13 to 57. Listings and maps for venues in the surrounding area 58-61 and venues taking part online only on pages 62-64.

Information on opening times, opening dates and facilities offered by venues, are at the bottom of each listing.

## Key to symbols

### Venue listing details

**Contact details**

01273 123456  
[www.myopenhouse.com](http://www.myopenhouse.com)  
[me@myopenhouse.com](mailto:me@myopenhouse.com)

**STUDIO/WORKSHOP**

**Facilities offered**  
 details below

**Type of venue**

**Days and dates not open**  
 light type on white background

**Opening times**  
 24hr clock

**Days and dates open**  
 bold white type on blue background

M	T	W	T	F	S	S
6	7	8	9	10	11	12
13	14	15	16	17	18	19
20	21	22	23	24	25	26
27	28	29	30	31		

### Facilities offered

- Refreshments served
- Disabled access
- Easy parking
- Garden open
- Workshops/demonstrations
- Live music
- Card payment facility
- Tap water refill available
- New venue - first year open

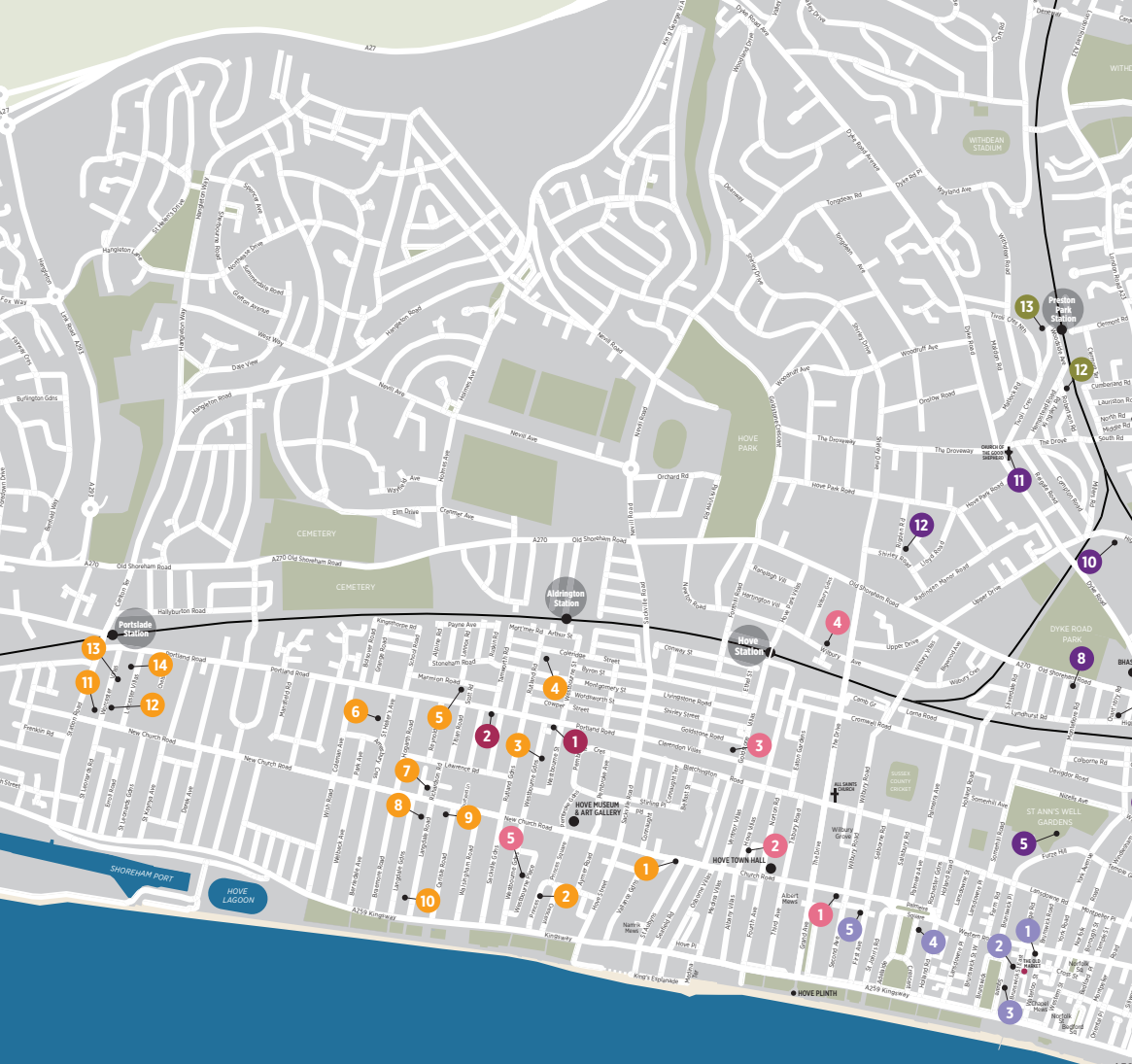
### Maps

- Open House venues
- On Trail maps, venues in other trails are shown faded
- Station
- Landmark building
- Church
- Car Park
- Built up areas
- Park or urban green area
- Rural area
- Water

Please note that while many houses and studios now have card payment facilities, some only accept cash or cheques.

## Access

The majority of houses are ordinary homes and may not have disabled access. Please look at the 'disabled access' section on our website for information on which houses are fully wheelchair accessible.



# Hove

WEST PIER





Brighton

Kempton



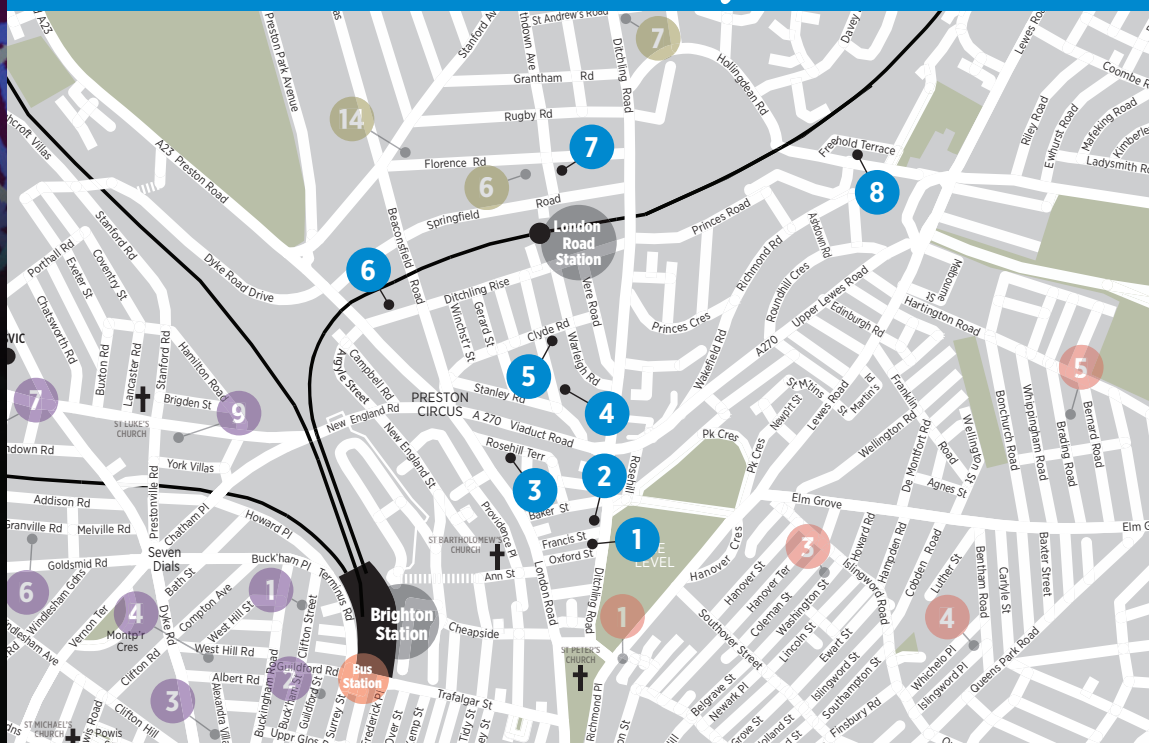
FREEVIEW 7

**latest** 

VIRGIN 159



# Beyond the Level



## Beyond the Level

[www.beyond-the-level.org](http://www.beyond-the-level.org)

**B**eyond the Level is celebrating 27 years in 2021! One of the original Open House trails in the Festival, it has successfully evolved into a diverse and eclectic community of houses and studios.

Beyond the Level showcases the work of practising artists, designers and makers living and working in or around the vibrant, rejuvenated London Road area of Brighton. Situated north and west of the level recreation space, it extends from Hollingdean Road up to meet the Fiveways trail, moves across the Roundhill conservation area, drops down to the Preston Circus community and along the bustling London Road. The trail offers visitors quality original arts and crafts, in informal and homely settings, at affordable prices.

Please note that while many houses and studios now have card payment facilities, some only accept cash or cheques. Where most venues are the artists' own homes, we may be unable to offer specialist access for disabled visitors, but will endeavour to offer appropriate assistance where required. Visitors are welcome to call houses and studios in advance to discuss specific requirements. Why not pay us a visit or find us on Instagram, Facebook and Twitter?

### Sponsors

Nick Ford Photography  
[www.nickfordphotography.co.uk](http://www.nickfordphotography.co.uk)

Moe's at the Circus Coffee House  
[www.facebook.com/MoesatTheCircus](https://www.facebook.com/MoesatTheCircus)



### Contact

Instagram @beyondthelevelofficial  
Facebook group: beyondthelevel  
Twitter @beyondthelevel

### Travel information

**Walking** Much of the trail is flat and accessible on foot or bike

**Bus** 5, 5A and 5B (Preston Circus), 26, 46 and 50 (Ditchling Road), 23, 24, 25, 28, 29 and 49 (Vogue Gratory).

**Rail** London Road station in the middle of the trail, has services to Brighton and Lewes. Brighton station is also close to the trail offering mainline services to London, Bedford, Southampton, Eastbourne, Lewes and Hastings.

## 1 Oxford Street – Nick Ford's Studio

Nick Ford Photography, 19 Oxford Street, Brighton BN1 4LA



Relino by Jack Durling, image by Nick Ford

Nick Ford and well-established guest artists would like to warmly welcome you to his studio in Oxford Street to view an exciting variety of new work including paintings, ceramic sculptures, pop art and photography.

**Nick Ford Photography**  
**Judy Alexander** *Mixed media*  
**Elbegzaya Khaltar** *Painting*  
**Jared Orlin** *Mixed media*  
**Kateryna Slobodyanyuk** *Painting*  
**Jack Durling** *Ceramics*  
**Michael Stone** *Photography*

[www.nickfordphotography.co.uk](http://www.nickfordphotography.co.uk)  
[nick@nickfordphotography.co.uk](mailto:nick@nickfordphotography.co.uk)  
 07834 912 247

### STUDIO/WORKSHOP



11.00-18.00

M	T	W	T	F	S	S
24	25	26	27	28	29	30
31	1	2	3	4	5	6
7	8	9	10	11	12	13
14	15	16	17	18	19	20
21	22	23	24	25	26	27

## 2 North Star Studio Ltd.

65 Ditching Road, Brighton BN1 4SD



North Star Studio Ltd. Ann March

Established over 40 years ago, North Star Studios is a Fine Art printmaking and photography cooperative, that will once again be open to the public, exhibiting members work amid the tools and presses of their creation.

**Ann March** *Etchings and lithographs*  
**Frances Quail** *Etchings and relief prints*  
**Jacintha Philip** *Etchings*  
**Sandy Reeves-Walsh** *Etched jewellery*  
**Helen Whitmore** *Screen prints*  
**Sherrie-Leigh Jones** *Screen prints*  
**Mark Eason** *Etchings and screen prints*  
**Julie Clark** *Monotypes*  
**Bip Mistry** *Photographs*  
**Matthew Hainsby** *Screen prints*

[northstarstudio.wordpress.com](http://northstarstudio.wordpress.com)  
[northstarprintmakers@gmail.com](mailto:northstarprintmakers@gmail.com)

### STUDIO/WORKSHOP

11.00-17.00

M	T	W	T	F	S	S
24	25	26	27	28	29	30
31	1	2	3	4	5	6
7	8	9	10	11	12	13
14	15	16	17	18	19	20
21	22	23	24	25	26	27

## 3 Rose Hill Rebels

Rose Hill Court, Rose Hill Terrace, Brighton BN1 4HS



Crocos Lane

Rose Hill Rebels are a group of artists who are residents at Rose Hill Seniors Housing in Brighton, including **Joe**: *Photography and painting*, **Tuck**: *Mixed media*, and **Lanie**: *Mixed media and photography*.

"Most of my work is based around nature. I started experimenting with photography at the beginning of lockdown. Over the last year, I have captured the garden and building around Rose Hill Court."

Please make an appointment to visit

[www.facebook.com/warthogroses](http://www.facebook.com/warthogroses)  
[rosehillrebels@outlook.com](mailto:rosehillrebels@outlook.com)

### COMMUNITY



12.00-16.00

M	T	W	T	F	S	S
24	25	26	27	28	29	30
31	1	2	3	4	5	6
7	8	9	10	11	12	13
14	15	16	17	18	19	20
21	22	23	24	25	26	27

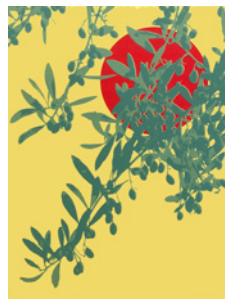
## 4 The Shaftesbury Collective

28 Shaftesbury Road, Brighton BN1 4NF

Join us for a warm welcome at the Shaftesbury Collective where we're showing a variety of art forms. You'll find colourful prints evoking memories and reflections; paintings exploring the language around women and girls; contemporary ceramics in a purposefully utilitarian style; and silver jewellery inspired by sculptural forms in nature.

Lots of lovely art, as well as coffee and cake!

**Lucy Cooper** *Prints*  
**Sandrine Jarret** *Ceramics*  
**Bobby Madrigal** *Painting*  
**Alison Crowe** *Silver Jewellery*



Offering an olive branch, Lucy Cooper

[www.lucycooperprints.com](http://www.lucycooperprints.com)  
[lucycooper20@gmail.com](mailto:lucycooper20@gmail.com)  
 07775 897 628

### HOUSE



11.00-17.00

M	T	W	T	F	S	S
24	25	26	27	28	29	30
31	1	2	3	4	5	6
7	8	9	10	11	12	13
14	15	16	17	18	19	20
21	22	23	24	25	26	27



## 5 Milton House

72 Clyde Road, Brighton BN1 4NP



Sarah Jones *Prints*  
Lucy Ogden *Plate*  
Emma Stanton *Jewellery*  
Jennie Jackson *Lighting*

Cocoon&Me *Craft kits and macramé*  
Caroline Charlton Hellyer *Ceramics*  
Becky Crow *Illustrative jewellery*  
Sal Goodyer *Printed leather purses*

Come and see why we have been voted Best Open House! Lots of beautiful work... and of course the open house cats, Percy and Murphy.

HOUSE



Morning Vibeart, Sarah Jones



Cocoon&Me Macrame, Lucy Ogden Plate (with Percy & Murphy)

Ella Morris *Prints*  
Morris Rush Weaver *Teeshirts*  
Madame Treacle *Cards and gifts*

Katie Brinsley *Ceramics*  
Vee Pease *Jewellery*  
4 Thieves *Immunity boosting oils*

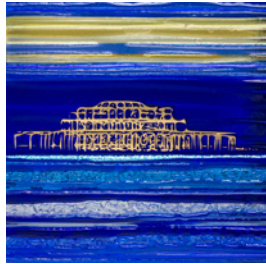
11.00-17.00

[www.sarahjonesprints.co.uk](http://www.sarahjonesprints.co.uk)  
[sarahjonesprints@gmail.com](mailto:sarahjonesprints@gmail.com)  
07815 208 755

M	T	W	T	F	S	S
24	25	26	27	28	29	30
31	1	2	3	4	5	6
7	8	9	10	11	12	13
14	15	16	17	18	19	20
21	22	23	24	25	26	27

## 6 Glass In Fusion

Unit 9 Beaconsfield Studios, 25 Ditchling Rise, Brighton BN1 4QL



West Pier in Blue and Gold.  
Stephanie Else/Glass In Fusion

Winner of the 2020 London Art Award, Stephanie invites you to visit *Glass In Fusion* – a fabulous glass studio showcasing her vibrantly beautiful glass artworks, gifts and jewellery.

On display will be award-winning glass panels and iconic *Brighton In Glass* framed tiles alongside stunning enamel compositions and ceramic sculptures.

A fantastic feast for the eyes – we look forward to seeing you!

Stephanie Else *Kiln-formed glass*  
Romi Shadler Reingold *Ceramics and enamel compositions*

[www.glassinfusion.co.uk](http://www.glassinfusion.co.uk)  
[stephanie@glassinfusion.co.uk](mailto:stephanie@glassinfusion.co.uk)  
07887 975 818

STUDIO/WORKSHOP



12.00-18.00						
M	T	W	T	F	S	S
24	25	26	27	28	29	30
31	1	2	3	4	5	6
7	8	9	10	11	12	13
14	15	16	17	18	19	20
21	22	23	24	25	26	27

## 7 Stanley Road Store on Florence

One Church, Florence Rd, Brighton BN1 6DL



Here's Hoping, Last Born Daughter

Boy are we looking forward to seeing you all! 40 artists this time in the most spacious of church halls brought to you by the liveliest Open House around. Jewellery, ceramics, lighting, clothing, homewares, illustration, beauty products, accessories, collage, embroidery, wood and metalwork, plants and

much more. Plus a cool Saturday farmers market right outside.

Check out our Instagram for introductions to our artists and makers plus news, competitions and other delights.

See ya there!

[www.thestanleyroadstore.co.uk](http://www.thestanleyroadstore.co.uk)  
[thestanleyroadstore@gmail.com](mailto:thestanleyroadstore@gmail.com)  
07931 224 449

COMMUNITY



Sat 09.30-18.00 | Sun 12.00-18.00

M	T	W	T	F	S	S
24	25	26	27	28	29	30
31	1	2	3	4	5	6
7	8	9	10	11	12	13
14	15	16	17	18	19	20
21	22	23	24	25	26	27

## 8 Pottery Gagliano

16-30 Hollingdean Road, Brighton BN2 4AA

You are warmly invited to visit Pottery Gagliano Studio. This is a great opportunity to see a fully working pottery workshop.

Come and meet our talented and innovative ceramicists and discover their amazing collection of artworks.

Roberto Gagliano  
Kate Henry  
Sophie Passmore  
Rachel and Robert Rankin  
Jane Porter  
Marcella Todaro  
Cadi Froehlich  
Tracey Locke



The Ol' Jar Collection: Roberto Gagliano

Raku Firing Demonstration. Date and time to be decided.  
Please check your social media for details.

www.potterygagliano.co.uk  
contact@potterygagliano.co.uk  
07789 997 361

STUDIO/WORKSHOP

12.00-17.00													
M	T	W	T	F	S	S							
24	25	26	27	28	29	30							
31	1	2	3	4	5	6							
7	8	9	10	11	12	13							
14	15	16	17	18	19	20							
21	22	23	24	25	26	27							

**CONTINENTAL CIRCUS BERLIN**  
ALL NEW PRODUCTION  
**BRIGHTON**  
PRESTON PARK  
**WED 16 to WED 23 JUNE**

Special Guest appearance by The Circus of Horrors  
Saturday 19 June at 8pm For Discounts quote GORY

Ticket Sales & Information [www.circusberlin.co.uk](http://www.circusberlin.co.uk)

**GREAT DISCOUNTS ONLINE FROM TICKETMASTER OR ON ONSITE**  
BOX OFFICE BY CALLING 07494 774 008 OR 07494 774 009

[www.ticketmaster.co.uk](http://www.ticketmaster.co.uk) MUST BOOK 24 HOURS PRIOR TO PERFORMANCE

Housed in climate controlled, socially distanced, Covid secure Theatre style Big Top

# MET

Greater Brighton  
Metropolitan  
College

## Profit from your passion

Explore a new interest or turn your hobby into a business with one of our adult evening classes or leisure courses.

- Creative writing
- Digital photography
- Drawing skills
- Floristry
- Graphic and web design
- IT skills for work
- Painting
- Social media
- Spanish
- Yoga

Courses starting in April, May & June  
[gbmc.ac.uk/dream-big](http://gbmc.ac.uk/dream-big)

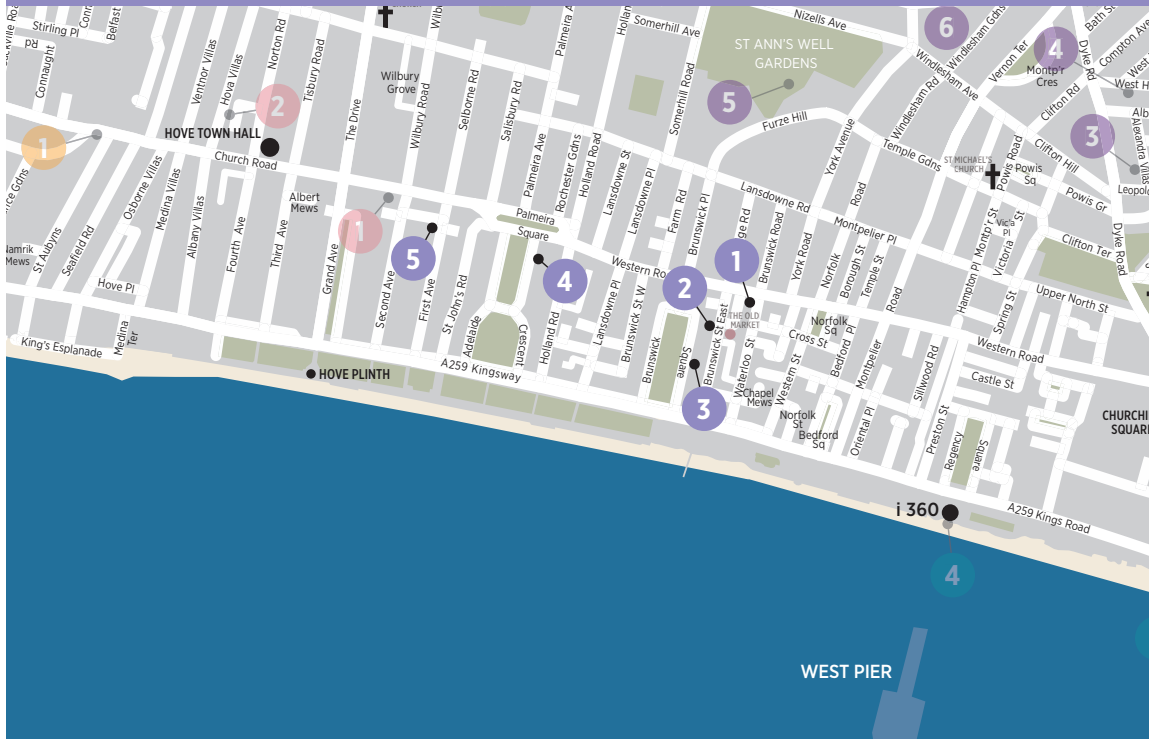
Make your  
daydreams  
a reality



OVER  
30  
CLASSES  
AVAILABLE



# Brunswick Town



## Brunswick Town Trail

[www.facebook.com/brunswicktowntrail](http://www.facebook.com/brunswicktowntrail)

**B**runswick Town Trail is on the border of Brighton and Hove by the seaside. The trail showcases high quality art, design and craft in a diverse range of places: houses, studios, workshops, a church, and a hotel. They are all easily accessible on foot. Make a day of it to meet the artists and makers, explore the historically and architecturally fascinating Brunswick Town Conservation Area, visit the seafront for a blast of fresh sea air and a flight on the i360. As a distraction from the trail there are a number of lovely pubs and cool cafes.

### Travel information

**Bus** Catch any bus running towards Western Road and you will quickly find yourself in the heart of the trail. (1, 1A, 2, 2A, 5, 5A, 5B, 6, 24, 25, 46, 49, 49A, 81).

**Train** From Brighton station, just hop on the number 6 bus towards Hove.

**Car** Pay by phone parking is available on most streets in the area.

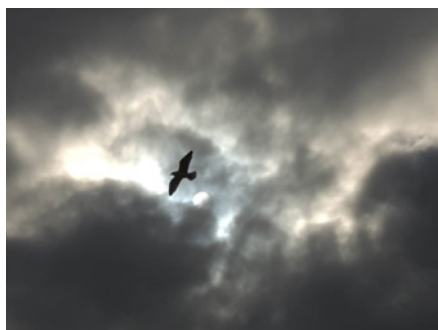
**Walking** Better still walk, bike or skate your way along the seafront to just beyond the West Pier.



**BRUNSWICK  
TOWN TRAIL**

## 1 HERA at BHWC

18-19 Western Road, Hove BN3 1AE



Freedom: Anne Williams

**Freedom: Postcards from a Plague Year.** Brighton Health & Wellbeing Centre is a forward-thinking GP practice on Western Road, offering patients the HERA Arts & Health Programme alongside traditional medical care.

For our Open House this year, we will focus on 'Freedom', with participants using postcards to create work that reflects experiences they have had during this strange year of pandemic – and what freedom means to them now.

www.brightonhealthandwellbeing-centre.co.uk/healing-arts/hera  
ben@robinhoodhealth.org  
01273 712175

### COMMUNITY



10.00-17.00

M	T	W	T	F	S	S
24	25	26	27	28	29	30
31	1	2	3	4	5	6
7	8	9	10	11	12	13
14	15	16	17	18	19	20
21	22	23	24	25	26	27

## 2 The Jewellery Workshop

52 Brunswick Street East, Hove BN3 1AU



Trophy face necklaces in silver and gold: Imaginarium Atelier

**Imaginarium Atelier** fuses the worlds of traditional goldsmithing and art jewellery. By joining forces and sharing a different set of skills, makers **Sylvaine Frouin** and **Marek Machlowski** create sculptural pieces that feel timeless and one-of-a-kind.

The workshop is like a cabinet of curiosity where the jewellery, the tools of the trade and inspirations are displayed side-by-side. Discuss bespoke commissions directly with the makers and discover a range of precious jewellery, drawings and paintings.

imaginariumatelier.com  
info@imaginariumatelier.com  
07586 768 280

### STUDIO/WORKSHOP



10.00-17.00

M	T	W	T	F	S	S
24	25	26	27	28	29	30
31	1	2	3	4	5	6
7	8	9	10	11	12	13
14	15	16	17	18	19	20
21	22	23	24	25	26	27

## 3 Below Stairs at no. 10

Basement, 10 Brunswick Square, Hove BN3 1EG



Below stairs: Hilary Kennett

**Fleur Cowgill**  
*Mixed media*  
**Hilary Kennett**  
*Mixed media*  
**Mark Wilson**  
*Painting*  
**Sharon Fraser Hall**  
*Painting*

The four of us are excited to be sharing new work in response to this intriguing space. Much of it untouched for nearly two hundred years, this servants' living and workspace inspired us to respond in a range of media and perspectives.

www.rth.org.uk  
h\_kennett@outlook.com

### HOUSE



11.00-18.00

M	T	W	T	F	S	S
24	25	26	27	28	29	30
31	1	2	3	4	5	6
7	8	9	10	11	12	13
14	15	16	17	18	19	20
21	22	23	24	25	26	27

## 4 Number 10

10 Palmeira Square, Hove BN3 2JB

Art at Number 10 will be showing established and emerging artists in a beautiful ground floor apartment on Palmeira Square, Hove. An eclectic mix of artists and makers, hosted by resident artist **Janie Ranger**.

House open from 11.00 to 17.00 for general viewing on our open dates.

Private appointments between 09.00 and 11.00 and 17.00 and 18.00 each Saturday and Sunday for those who wish to stay super safe. Please contact Janie directly to arrange – see email address below.

www.janieranger.com  
janieranger@googlemail.com  
07816 922 979

### HOUSE



11.00-17.00

M	T	W	T	F	S	S
24	25	26	27	28	29	30
31	1	2	3	4	5	6
7	8	9	10	11	12	13
14	15	16	17	18	19	20
21	22	23	24	25	26	27

**Tim France**, **Patti Hopkins**, **Jessie Marie**, **Jewelfloozy**, **Vintage Victoriana**, **Diane Bailey**, **Barrie J Davies**, **Lexi Laine**, **Aysenil Senkul**, **Matthew Burns**, **Sublime Vintage**, **Katarzyna Aekbote**, **David Ryan/Actually**, **Claire Scott**, **Twisted Rocks**, **Janie Ranger**

Maric Deane: Janie Ranger



## 5 The Walker Gallery

2a Queens Place, Hove BN3 2LT

Andy Walker



Mixed media, drawings and paintings based on movement, calm and chaos.

[www.thewalkergallery.co.uk](http://www.thewalkergallery.co.uk)  
[andywalkerart@gmail.com](mailto:andywalkerart@gmail.com)  
 07793960004

STUDIO/WORKSHOP



10.00-17.00													
M	T	W	T	F	S	S							
24	25	26	27	28	29	30							
31	1	2	3	4	5	6							
7	8	9	10	11	12	13							
14	15	16	17	18	19	20							
21	22	23	24	25	26	27							



## Artists Open House Sponsors & Print Partner 2021

From creative design through to print and mailing solutions. For nearly 50 years the **Gemini Print Group** continues to serve businesses UK wide.

**Green Leaf** award winners 2020 for our dedication to Planet Positive Printing.

Drop in for coffee, call us on **01273 464 884** or email us at [hello@gemini-print.co.uk](mailto:hello@gemini-print.co.uk) to see how we could help you.



"Quote **AOH21** to receive your special discount"



 **Gemini Print Group**



# ART WAVE

11 - 26 September

Artists & makers trails across  
Lewes, Newhaven, Seaford  
and the surrounding villages



Plan your visit online

[artwavefestival.org](http://artwavefestival.org)

 [@artwavefestival](https://www.instagram.com/artwavefestival)



A Visit Lewes event  
[visitlewes.co.uk](http://visitlewes.co.uk)

# Central



## Central Trail



**T**he Central Trail is the heartbeat of the City. Taking you from Brighton Station into the vibrancy of the North Laine, navigating a path through the Lanes before settling you in a deckchair at the seafront where seagulls, ice cream and sea air clamour for attention. Pick up unique work from artists and collectives; treasures and keepsakes for your home or loved ones, or simply give yourself over to the day and enjoy a feast for the eyes and senses. The Central Trail spans works across photography, painting, sculpture, screen print, holistic art and more.

### Travel information

**Walking, Rail, Bus** Central Trail is situated within easy walking distance of Brighton railway station, which is served well by trains, buses and taxis.

**Car** There are a number of car parks in the central area along with metered on street parking.

## 1 Aphrodite Gallery No: 2

2 Nile Street, Brighton BN1 1HW



A treasure trove of delightful arts and crafts in the heart of the famous Brighton Lanes, Aphrodite Gallery gift shop sells unique and original works from Brighton and Hove and beyond.

This is my first year opening as part of the Artists Open Houses Festival, showcasing my work, **Denise Graham** ceramics and **Nick Orsborn**'s paintings and prints, plus the work of 15 other guest artists. So come and meet the group and share in the great atmosphere.

www.aphroditegallery2.com  
aphroditegallery2@gmail.com  
07599 533 930

### GALLERY



Sa 10.00-18.00 Su 11.00-16.00

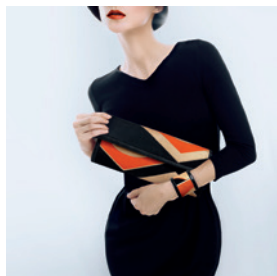
Mo-Fr 10.00-17.30

M	T	W	T	F	S	S
24	25	26	27	28	29	30
31	1	2	3	4	5	6
7	8	9	10	11	12	13
14	15	16	17	18	19	20
21	22	23	24	25	26	27

Lure clutch bag & matching cuff bracelet. Abi-K

## 3 Abi-K kimono silk accessories

6 Hanningtons Lane, Brighton BN1 1GS



Abi-K designs unique limited edition accessories crafted from vintage Japanese kimono obi silk and leather.

The obi is the formal sash worn around the waist of a kimono and were once worn by geishas or

in formal Japanese ceremonies, ranging from 1920's upwards. Only a small number of products are made from each silk and no two are ever the same. Proudly bespoke and made in England.

www.abi-k.com  
abigail@abi-k.com  
07711 782 678

### COMMERCIAL



Sa 10.00-17.00 Su 11.00-16.00

M	T	W	T	F	S	S
24	25	26	27	28	29	30
31	1	2	3	4	5	6
7	8	9	10	11	12	13
14	15	16	17	18	19	20
21	22	23	24	25	26	27

## 2 Lee Miller Archives Print Room

The Friends Meeting House, Ship Street, Brighton BN1 1AF

*War and Friendship:*  
An exhibition of private photographs by **Lee Miller** and her wartime buddy **David E. Scherman**.

During WWII accredited US warcorrespondents, Lee Miller – Vogue and David E. Scherman – LIFE Magazine, continually crossed paths as they followed the US allies across Europe, documenting the Liberation and the horrors of war, becoming one of the most highly regarded and often evoked photo-journalist duos of the war. Collectors and browsers are welcome.



Self portrait with headband, Lee Miller Studios Inc., New York, USA 1932, Lee Miller

Please make an appointment to visit

Sa 29 May 10.30-17.30, Su 30 May 13.00-17.30.

Sa 5 Jun 10.30-20.00 Su 6 Jun 13.00-17.30

www.leemiller.co.uk  
photo@leemiller.co.uk  
01825 872 691

### COMMUNITY



M	T	W	T	F	S	S
24	25	26	27	28	29	30
31	1	2	3	4	5	6
7	8	9	10	11	12	13
14	15	16	17	18	19	20
21	22	23	24	25	26	27

## 4 BouSham Gallery

14 Hanningtons Lane, Brighton BN1 1GS

Contemporary retail gallery in the heart of Brighton featuring:

**Clair Boubli**  
*Contemporary jewellery, art glass*  
**Shyama Ruffell**  
*Paintings, prints and textiles*  
**Gabriele Ghiani**  
*Terracotta sculpture*  
**Colin Ruffell** *Paintings prints*  
**Fran Slade** *Painting prints*  
**Alex Hollingworth** *Ceramics*  
**Robyn Nield** *Bronze sculpture*  
**Cocoonandme** *Macrame*  
**Mifawny Stringer** *Prints*  
**Tim Mason** *Vintage collectables*  
**David Price** *Ceramic sculpture*  
**Belle Boubli** *Kids jewellery*  
**Hal of Hove**  
*Artisan botanical products*  
**Be Natural Candles** *Room fragrances*  
**Topsy Jewell** *Functional ceramics*



BouSham Gallery Window

@boushamgallery  
boushamgallery@gmail.com  
07503 401 905

11.00-18.00

M	T	W	T	F	S	S
24	25	26	27	28	29	30
31	1	2	3	4	5	6
7	8	9	10	11	12	13
14	15	16	17	18	19	20
21	22	23	24	25	26	27

### GALLERY





## 5 Sussex County Arts Club

3 Bond Street Cottages, Bond Street, Brighton BN1 1RP

Ines G. Harney



The Sussex County Arts Club's annual summer exhibition showcases artwork produced by club members in a variety of media, much of it created during some of the many sessions run throughout the year at the club.

We offer a variety of sessions for all abilities from beginners to professionals.

Please check our website for more details.

[www.sussexcountyartsclub.co.uk](http://www.sussexcountyartsclub.co.uk)  
[info@sussexcountyartsclub.co.uk](mailto:info@sussexcountyartsclub.co.uk)  
 07708 870 791

Sa 13.00-17.00, Su 13.00-17.00

M	T	W	T	F	S	S
24	25	26	27	28	29	30
31	1	2	3	4	5	6
7	8	9	10	11	12	13
14	15	16	17	18	19	20
21	22	23	24	25	26	27

COMMUNITY



## FRAME FACTORY

High quality contemporary  
framing & giclée printing

### Framing

Bespoke framing  
Exhibition framing  
Mount cutting  
Canvas stretching  
Box framing  
Friendly professional advice



### Printing

Large format printing  
Printing onto canvas  
Limited edition giclée printing

01273 609207

[www.frame-factory.co.uk](http://www.frame-factory.co.uk)  
[info@frame-factory.co.uk](mailto:info@frame-factory.co.uk)

7 Sydney Street, Brighton, East Sussex,  
BN1 4EN

## Punk on PAPER

ORIGINAL MUSIC  
POSTERS

SEX PISTOLS  
THE CLASH  
DAVID BOWIE  
THE SMITHS...

[PUNKONPAPER.COM](http://PUNKONPAPER.COM)



BRIGHTON

# ESCAPE TO THE SEASIDE



There is nothing better than Brighton in the summer.  
The sea breeze with a sweet/savoury smell of candy floss mixed  
with salty chips.

Book 2 nights or more at My Brighton with the code STAYCAY and  
enjoy a refreshing alcoholic sparkling drink from our friends at  
Arrowtown, £10 minibar credit and more!

My Brighton  
17 Jubilee Street, Brighton, BN1 1GE  
[www.myhotels.com](http://www.myhotels.com)  
[@myhotels\\_group](https://www.instagram.com/myhotels_group)



## Fiveways Artists Group

[www.fivewaysartists.co.uk](http://www.fivewaysartists.co.uk)

**F**orty years of Fiveways! 2021 is our anniversary and we are celebrating this with an exhibition of Fiveways' founder Ned Hoskins at St Augustine's.

15 venues are open including three new ones: Robertson Yard Studios, The Nature House, and the Box House. Dorothy Stringer School has an on-line opening, making our total 16. Two venues also celebrate big birthdays: 1 at 61 (open for 21 years and at a new location), and the Ceramic House open for ten.

Later this year, we also have more exhibitions—"Call and Response" and "Artists in Print"—not to be missed!

### Travel Information

**Bus** 5, 5A, 5B, 26, 46 and 50

**Rail** From Brighton station take the Lewes train to London Road station or the London train to Preston Park station

**Car** The Fiveways Artists Trail area is to the North and East of Preston Park and the A23. Some roads have parking restrictions.

### Sponsors

Beaumonts  
David and Co  
Roger Mason Framing  
Wigwam  
Cubitt and West  
The Cleveland Arms  
Surrenden Dental Practice  
Found Cafe  
Starling Studios  
Store  
Tilt  
The Open House  
St Augustine's Arts and Events Centre  
Frame Factory  
Brighton Carpet Centre  
Fiveways Fruits  
Bowley & Gallagher  
The Pet Shed  
The Makers Fair





## 1 No 1 at 61

61 Sandgate Road, Brighton BN1 6JP

By Agnès Frances Doherty / JRM Photography



Frances Doherty  
*Ceramics*  
Jane Denman  
*Painting*  
Makiko Konishi  
*Paper and books*  
Charlie High  
*Jewellery*  
Jack Durling  
*Sculpture*

We are excited to be opening for the 21st time but at a new address! You will be able to walk through the house and out to the studio in the garden. There will also be sculptures in nearby front gardens. Two new artists this year with unusual work as well as new work from your house favourites.

www.francesdoherty.co.uk  
frances.doherty@gmail.com  
07854 541 190

11.00-17.00

M	T	W	T	F	S	S
24	25	26	27	28	29	30
31	1	2	3	4	5	6
7	8	9	10	11	12	13
14	15	16	17	18	19	20
21	22	23	24	25	26	27

HOUSE



## 2 The Hidden House

142 Balfour Road, Brighton BN1 6NE



Untitled David Price

The Hidden House is excited to present a fantastic group of local artists:

Sophie Hulf *Painting*  
Jessica Christie Miller *Jewellery*  
Pearl's Drapery *Textiles*  
Katie Ward *Mixed media*  
Louise Kelly *Ceramics*  
Lucky Stitch *Textiles*  
Fleur Grenier *Metalwork*

Angela Evans *Ceramics*  
Sarah Bidwell *Textiles*  
Sarah Gamble *Mixed media*  
Anna Cates *Turned wood*  
David Price *Sculpture*  
Vivienne Ridley *Jewellery*  
Denise Harrison *Painting*  
Annie McMullan *Glass*  
Sam Wilson *Metalwork*  
Retro Green *Furniture*  
Holly Murray *Textiles*

insta: the\_hidden\_house\_at\_142  
katiebrett@yahoo.co.uk  
07792 250 887

11.00-17.00

M	T	W	T	F	S	S
24	25	26	27	28	29	30
31	1	2	3	4	5	6
7	8	9	10	11	12	13
14	15	16	17	18	19	20
21	22	23	24	25	26	27

HOUSE



## 3 The Nature House

113 Preston Drove, Brighton BN1 6EW

Serene Ellie Hipkin artist



Ellie Hipkin  
*Textiles artist*  
Heike Roesel  
*Fine art etchings*  
Jo Hathaway  
*Painting*  
Jan Irvine  
*Jewellery*  
Nicola Gillis  
*Ceramics*  
Matt Goddard  
*Photography*  
Chris Murphy  
*Ceramics*  
Lizzie Kershaw  
*Jewellery*  
Sarah Rickard  
*Ceramics*  
Lauren Hayes  
*Paper artist*

Textile mixed media artist Ellie Hipkin is opening her home for the first time with 9 guest artists.

*The Nature House:* All the artworks are inspired by nature through organic form, local landscapes, colour and texture.

elliehipkinart.com  
hello@elliehipkinart.com  
07803 000 901

11.00-17.00

M	T	W	T	F	S	S
24	25	26	27	28	29	30
31	1	2	3	4	5	6
7	8	9	10	11	12	13
14	15	16	17	18	19	20
21	22	23	24	25	26	27

HOUSE



## 4 One-Six-Nine

169 Preston Drove, Brighton BN1 6FN



Tranquil Bay Hiroko Lewis

Hiroko proudly presents another wide range of the highest quality fine art and craft, with a mix of faces old and new, and this time featuring installations in the front garden too. Don't miss it! Appointments available upon request.

Hiroko Lewis *Painting*  
June Frickleton *Painting*

Marco Crivello *Mixed media*  
Daniel Griffiths *Sculpture*  
Dona Diani *Jewellery*  
Tom Peterson *Ceramics*  
Nichola Campbell *Painting*  
Jim Mayor *Glass*  
Sue Collins *Print*  
Geoff Hands *Painting*  
Jacob Crivello *Installation*  
Rosie Tweedale *Ceramics*

www.onesixnine.co.uk  
art@onesixnine.co.uk  
01273 508651

11.00-17.30

M	T	W	T	F	S	S
24	25	26	27	28	29	30
31	1	2	3	4	5	6
7	8	9	10	11	12	13
14	15	16	17	18	19	20
21	22	23	24	25	26	27

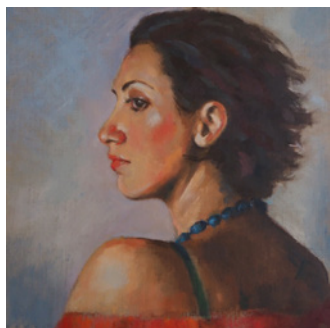
HOUSE



## 5 Jane Palmer & Friends

239 Preston Drive, Brighton BN1 6FL

Beatrix with blue necklace: Jane Palmer



Jane Palmer  
Painting  
Pam Glew  
Painting  
Tan Kingston  
Painting  
Kate Scott  
Painting  
Stef Hunter  
Ceramics  
Nigel Hunter  
Sculpture

We're back with a new collection of fine art.

Jane shows her latest portraits, landscapes and still lifes. Stef, Nigel, Tan, Pam and Kate present their paintings, ceramics and sculptures.

Jane won Artist of the Year in the AOH festival in May 2019.

Based in or near Brighton, we work in a wide range of media. Meet us all on our website and see our videos there before your visit.

Commissions welcomed!

janepalmerbrighton.co.uk/open-house  
palmer.jane1963@gmail.com  
07710 710 766

### HOUSE



11.00-17.00										
M	T	W	T	F	S	S				
24	25	26	27	28	29	30				
31	1	2	3	4	5	6				
7	8	9	10	11	12	13				
14	15	16	17	18	19	20				
21	22	23	24	25	26	27				

## 7 Art@202

202 Ditchling Road, Brighton BN1 6JE

Assorted Ray: Chris Brooks



We are so delighted to open again and welcome new and old friends after a couple of years closed. We are endeavouring to open safely with a one-way system through our house and out into the garden (which we have revamped

somewhat). Both indoors and out we have an array of fabulous artists working in various mediums, so please come and join us.... even hopefully for homemade cake and refreshments as allowed.

polly.raynes.artist@icloud.com  
01273 555007

### HOUSE



11.00-18.00										
M	T	W	T	F	S	S				
24	25	26	27	28	29	30				
31	1	2	3	4	5	6				
7	8	9	10	11	12	13				
14	15	16	17	18	19	20				
21	22	23	24	25	26	27				

## 6 Emily Boo & Friends

44 Florence Road, Brighton BN1 6DJ



Budget Chair: Emily Beaumont

We are so delighted to be back, showing a fabulous array of work in a great setting.

Emily Beaumont Furniture  
Yolande Beer Ceramics  
Frances Bloomfield Mixed media  
Janet Brooke Print making  
Natasha Caughey Jewellery  
Caroline Chalton Hellyer Ceramics  
Lyn Holly Coorg Photography

Sarah Duffield Painting  
Jo Hathaway Painting  
Jenny Hughes Textiles  
Rock & Petal Jewellery  
Katherine Lawrie Jewellery  
Stacey Manser-Knight Ceramics  
Philippa Stanton Textiles  
Stokey Textiles Textiles  
Haydn Stride Print making  
Annabel Wyatt Mixed media

www.emilyboopholstery.co.uk  
em@myupholstery.co.uk  
07971 834 872

### HOUSE



11.00-17.00										
M	T	W	T	F	S	S				
24	25	26	27	28	29	30				
31	1	2	3	4	5	6				
7	8	9	10	11	12	13				
14	15	16	17	18	19	20				
21	22	23	24	25	26	27				

## 8 358

358 Ditchling Road, Brighton BN1 6JG

Suburban Dreaming: Caroline Smith



Nick Orsborn  
Watercolours and resin  
jewellery  
Diane Rogers  
Embroidered textiles  
Jude Clynnick Prints  
Dawn Thornhill Paper  
cuts  
Ricky Delaney  
Metalwork  
Oriana Evans Jewellery  
Susie Ware Clothing  
Caroline Smith  
Painting  
Yolande Beer Ceramics  
Jane Green Mixed  
media  
Jing Wang Chinese  
brush painting  
Ben Nazarko  
Photography  
Karen Potter Prints  
Hilary Phillips Textiles

Situated just north of the Fiveways shops with our best line-up yet!

Angela Harrison Painting  
Lauren Hayes Paper cuts  
Jane McCall Charleston  
inspired lampshades  
Si Uwings Garden  
sculpture

Facebook/Insta: 358ditchlingrd  
lauren-hayes@outlook.com  
01273 887591

### HOUSE



11.00-17.00										
M	T	W	T	F	S	S				
24	25	26	27	28	29	30				
31	1	2	3	4	5	6				
7	8	9	10	11	12	13				
14	15	16	17	18	19	20				
21	22	23	24	25	26	27				

## 9 The Ceramic House

75 Stanmer Villas, Brighton BN1 7HN

Between Reality and Virtuality, Lau Yat Wai



Dry Object, Kang Qing (photo by Guanghui Chen)

For our 10th anniversary, The Ceramic House presents *Emptiness is Form*, an exhibition of contemporary Chinese ceramics. It is the first event in Interbeing, an ambitious international project taking place throughout 2021 that brings sound and ceramic artists together through residencies, exhibitions and collaborations in China and the UK.

The artworks selected for this show offer a rare overview of the breadth of contemporary Chinese ceramic practice today and are displayed against the unique background of Kay Aplin's architectural ceramics which fill interior and exterior of house and garden.

To accompany the ceramics, Chinese sound artists will live stream performances during the exhibition. Events updated on The Ceramic House website/FB page.

[www.theceramicthouse.co.uk](http://www.theceramicthouse.co.uk)  
[kay@theceramicthouse.co.uk](mailto:kay@theceramicthouse.co.uk)  
 07803 161 313

Kang Qing  
 Eugene Chung  
 Monica Tong  
 Ling Chun  
 Gerald Mak  
 Ho Lai  
 Jia Kun  
 Wei Xin  
 Jenny Chan  
 Ryan Hui  
 Ka Ho Ng  
 Annie Wan  
 Lau Yat Wai  
 Hua Wang  
 Rong Sheng  
 Chaoqi Xu  
 Yibo He  
 Kang Yang  
 Cunze Yua  
 Kay Aplin



HOUSE											11.00-17.00	
M	T	W	T	F	S	S						
24	25	26	27	28	29	30						
31	1	2	3	4	5	6						
7	8	9	10	11	12	13						
14	15	16	17	18	19	20						
21	22	23	24	25	26	27						

## 10 Stuart and Mark and Friends

23 Cornwall Gardens, Brighton BN1 6RH

Relief Print, Stuart Bullen



Right: Stanmer Suburb, Mark Findlay



Welcome to our open house, which has generous space to show work, and a wonderful sculpture garden. Media on show include ceramics, glass, fabrics, painting, photography, printmaking and sculpture. The house is open at weekends, bank holiday 31st May, or at other times during the week by appointment via email or phone call.

Stuart is an experienced printmaker, who also works with handmade paper and life drawing.

Mark specialises in landscape photography, woodland, sea, and effects of light. His work reflects his interest in climate change and the environment.

Facebook: StuartBullenMarkFindlay  
[mark.h.b.findlay@gmail.com](mailto:mark.h.b.findlay@gmail.com)  
 07941 257 288



HOUSE											11.00-18.00	
M	T	W	T	F	S	S						
24	25	26	27	28	29	30						
31	1	2	3	4	5	6						
7	8	9	10	11	12	13						
14	15	16	17	18	19	20						
21	22	23	24	25	26	27						

Pauline Crook *Textiles*  
 Si Uwins *Sculpture*  
 Jessica Jordan *Ceramics*  
 Naomi Sack *Sculpture*  
 Stuart Bullen *Print making*

Mark Findlay *Photography*  
 Simon Bottrell *Reclaimed timber assemblages*  
 Chris Connor *Digital media*  
 Chris Lau *Glass*

Simon Mathews *Ceramics*  
 Jessica Parkes *Glass*  
 Hilary Stirling *Ceramics*  
 Eva Wibberley *Painting*



# 11 Bowley and Gallagher

209 Preston Road, Brighton BN1 7GX

An opportunity to see a selection of local artists coming together to showcase their talents in this bright and modern space.

Nick Newlands *Furniture*  
 Jamie Simpson *Textiles*  
 Satarupa Bradley *Jewellery*  
 Throw to Fire *Ceramics*  
 Trisha Keith *Painting*



Hanging pot: Throw to Fire



Silver earrings: Satarupa Bradley



Watercolour: Trisha Keith



Art Chest: Nick Newlands

[www.bowleyandgallagher.co.uk](http://www.bowleyandgallagher.co.uk)  
[funerals@bowleyandgallagher.co.uk](mailto:funerals@bowleyandgallagher.co.uk)  
 01273 934899

COMMERCIAL



10.00-17.00									
M	T	W	T	F	S	S			
24	25	26	27	28	29	30			
31	1	2	3	4	5	6			
7	8	9	10	11	12	13			
14	15	16	17	18	19	20			
21	22	23	24	25	26	27			

## 12 Robertson Yard Studios

Robertson Yard, 42a Robertson Road, Brighton BN1 5NJ



Robertson Yard Arts and Crafts collective – come and see our working spaces; ceramics, glass blowing, painting, violin making, jewellery, lapidary, metalwork and more!

Katie Brookes *Painting*  
Jon Mills *Metalwork*  
Anna Tummers *Luther*  
Sanni Falkenberg *Jewellery and lapidary*  
Katie Spragg *Ceramics*  
Cara Tonkin *Jewellery*  
Vivienne Ridley *Jewellery*  
Sixty Four Pixels *Electronic music accessories*

Gordon D. Kay *Glass*  
Rosalind Poerwantoro *Ceramics*  
Tania Corbett *Painting*  
Mary Penley *Ceramics*  
Rhys Trussler *Painting*  
Cherry Jordan *Ceramics*  
Gala Colivet Dennison *Jewellery*

www.robertsonyard.co.uk  
jon@metalljon.com  
07793 321 039

### STUDIO/WORKSHOP



11.00-17.00											
M	T	W	T	F	S	S					
24	25	26	27	28	29	30					
31	1	2	3	4	5	6					
7	8	9	10	11	12	13					
14	15	16	17	18	19	20					
21	22	23	24	25	26	27					

## 13 The Box House

9b Woodside Avenue, Brighton BN1 5NF

The Box House



Come and visit the striking modern house with the yellow front door to see the display of artists' work spanning painting, sculpture, reliefs and printmaking. The work of John Goodison has been in Vogue, House and Garden and Elle Decoration.

John Goodison *Painting*  
Anna Harvey *Print making*  
Damian Toal *Painting*

Insta: theboxhouse2020  
harvey.anna@hotmail.co.uk  
07714 662 792

### HOUSE



11.00-17.00											
M	T	W	T	F	S	S					
24	25	26	27	28	29	30					
31	1	2	3	4	5	6					
7	8	9	10	11	12	13					
14	15	16	17	18	19	20					
21	22	23	24	25	26	27					

## 14 St Augustine's Arts and Events Centre

Junction of Stanford Avenue and Florence Road, Brighton BN1 6EA



St Augustine's has a collection of artworks from Fiveways artists and beyond. Art in various media is on display, from upcycled work, graffiti, screen-prints, oil paintings, sculpture and more.

Come and witness something very different from the norm and discover new artists here at St Augustine's Centre for arts, culture and great vegan food. Ask us about our studios to rent.

www.brightonstaugustinescentre.co.uk  
info@brightonstaugustinescentre.co.uk  
08000 141434

### COMMUNITY



9.00-17.30											
M	T	W	T	F	S	S					
24	25	26	27	28	29	30					
31	1	2	3	4	5	6					
7	8	9	10	11	12	13					
14	15	16	17	18	19	20					
21	22	23	24	25	26	27					



## Events in Open Houses

Some Open Houses offer you the chance to explore your creative side through hands on workshops and other events.

For all event information see the Events page of the AOH website:

[www.aoh.org.uk/events](http://www.aoh.org.uk/events)



## Hanover Arts Trail

[www.hanoverartstrail.org](http://www.hanoverartstrail.org)

**Y**ou are cordially invited to take a wander around delightful Hanover, Brighton's colourful and thriving artistic community. The ice-cream coloured houses of Hanover and its surrounding streets are bursting with lively local businesses, great coffee shops and pubs for you to lunch at, plus artistic talent aplenty.

We have some exciting new venues opening up their doors for the first time this year along with some more experienced Open House exhibitors.

There will be an eclectic mix of design, fine art and crafts to suit all tastes, as well as delicious refreshments. So come along and make a day of it!

### Sponsors

**Fern & Pine**  
[www.fernandpine.com](http://www.fernandpine.com)

**Grove Gardens**  
[www.grovegardens.co.uk](http://www.grovegardens.co.uk)

**Hanover Homes**  
[www.hanoverhomes.net](http://www.hanoverhomes.net)

**Hilly Laine**  
[www.hillylaine.co.uk](http://www.hillylaine.co.uk)

**MacMan**  
[www.macman.co.uk](http://www.macman.co.uk)

**MM Property & Developments**  
[www.facebook.com/MMPropertyDevelopments](http://www.facebook.com/MMPropertyDevelopments)

**Q Estate Agents**  
[www.qsalesandlettings.co.uk](http://www.qsalesandlettings.co.uk)

**The Setting Sun**  
[www.thesettingsunpub.co.uk](http://www.thesettingsunpub.co.uk)

**Starfish & Coffee**  
[www.starfishandcoffee.cafe](http://www.starfishandcoffee.cafe)

**Wheeler Estate Agents**  
[www.wheelerestateagents.co.uk](http://www.wheelerestateagents.co.uk)





# 1 Phoenix Art Space: Open Studios

Phoenix Art Space, 10-14 Waterloo Place, Brighton BN2 9NB



Phoenix Art Space: Outline Hainsworth



Phoenix Art Space: Photo Mike Stokes

Visit Phoenix Art Space for an Open Studios event with a difference. A selection of our studio artists have been filmed in their workspace, showing sketches, techniques and finished work. Visit the Green Room to hear about and discuss the creative practices of our artist.

Get to know us, our artist and our community.

We have over 100 artist/makers working in the building. They include painters, ceramicists, photographers, film makers, sculptors, performance artists, graphic artists, printmakers, jewellers, writers, and sound artists.

Please make an appointment to visit

[www.phoenixartspace.org](http://www.phoenixartspace.org)  
[info@phoenixbrighton.org](mailto:info@phoenixbrighton.org)  
 01273 603700

STUDIO/WORKSHOP



				11.00-17.00		
M	T	W	T	F	S	S
24	25	26	27	28	29	30
31	1	2	3	4	5	6
7	8	9	10	11	12	13
14	15	16	17	18	19	20
21	22	23	24	25	26	27

## 2 The Coal Hole

38 Albion Hill, Brighton BN2 9NW

Albion Hill: Lisa Holdcroft



Opening for the sixth year, this architect renovated former coal shop, is once again packed with an eclectic mix of talents.

[www.instagram.com/thecoalholeaoh](http://www.instagram.com/thecoalholeaoh)  
[thecoalholeaoh@gmail.com](mailto:thecoalholeaoh@gmail.com)  
 07773 197 006

HOUSE



Georgina Smith  
 Architectural mixed-media relief painting

Cassia Beck Retro  
 inspired collages and gifts

Pinki Jones Bright  
 prints and leather jewellery

Suzi Lowe Bold semi-abstract painting

Tiny Scenic  
 Americana inspired jewellery

Made by Jarl  
 Linear prints and lampshades

Lisa Holdcroft Quirky  
 cartoon prints

Haus of Daisy  
 Outdoor cushions

Curve Top Tables  
 Funky functional tables

11.00-17.00

M	T	W	T	F	S	S
24	25	26	27	28	29	30
31	1	2	3	4	5	6
7	8	9	10	11	12	13
14	15	16	17	18	19	20
21	22	23	24	25	26	27

## 3 Yvonne Coomber & Mike Boyer

57 Washington Street, Brighton BN2 9SR

I couldn't love you more: Yvonne Coomber



[yvonnecoomber.com](http://yvonnecoomber.com)  
[mikeboyermessenger@gmail.com](mailto:mikeboyermessenger@gmail.com)  
 07779 058 735

HOUSE



10.00-17.00

M	T	W	T	F	S	S
24	25	26	27	28	29	30
31	1	2	3	4	5	6
7	8	9	10	11	12	13
14	15	16	17	18	19	20
21	22	23	24	25	26	27

**BRIGHTON FRINGE** FROM 28 MAY 2021

Book tickets: [BRIGHTONFRINGE.ORG](http://BRIGHTONFRINGE.ORG)  
 BRIGHTON FRINGE APP | BOX OFFICE: 01273 91 72 72

IT'S TIME TO CELEBRATE

Follow Us  
 @BrightonFringe  
 BrightonFringe

proudly supported by



Down in the woods: Mike Boyer

On our first time doing the Artists Open Houses, husband and wife team Yvonne and Mike offer up a gorgeous visual feast of vibrant, playful, stimulating paintings for your curiosity and pleasure.

Internationally renowned artist Yvonne Coomber creates a joyful dance around the canvas. Paintings that celebrate wild places and wild hearts, rainbows of colour saturated in love. Oil paintings, prints and hand embellished printed canvases

Mike Boyer captures fleeting moments of transition and choice in his oil paintings. Echoes of what has passed and promises of what is to come.



## 4 Place:69

69 Islingword Place, Brighton BN2 9XG

Undercliff Revised 1, Petra Giffard



Alfie Sheppard  
Painting  
Brim and Proper  
Millinery  
H Ceramics  
Ceramics  
Patrick Green  
Photography  
Petra Giffard  
Painting

Returning for our second artist open house, Place:69 can be found at the very top of Hanover. This year you can once again expect an exciting showcase of paintings, photography, millinery, and ceramics – as well as the odd surprise! The eclectic and varied work on show is unified by the over-arching theme of *Place*.

Instagram: aoh2021\_place69  
psgiffard@gmail.com  
07739 004 921

11.00-17.00

M	T	W	T	F	S	S
24	25	26	27	28	29	30
31	1	2	3	4	5	6
7	8	9	10	11	12	13
14	15	16	17	18	19	20
21	22	23	24	25	26	27

### HOUSE



## 5 Becky Blair and Friends

66 Brading Road, Brighton BN2 3PD

The Archintha Collection. Collaboration by Rachel Mary Entwistle and Becky Blair (Photo by Hugh Fox)



Becky Blair Painter  
Rachel Mary Entwistle Potter  
Laila Poppy Laurel Designer / maker

Annie Slack Spoon Carver  
Maria Tilyard Textile artist

Becky Blair is a Brighton artist who for the first time is opening her home for the festival! Becky exhibits internationally, often showing her paintings in Australia as well as Europe and London. Her work is driven by her passion for colour, playing with her memories of travel and sunny climates to create images that evoke joy. Showing her latest collection of summer inspired paintings and prints, she will also be unveiling her very exciting collaboration with Brighton potter Rachel Mary Entwistle. Also in the house are magical cushions of flora and fauna by textile artist Maria Tilyard, beautiful woodwork by award winning maker Laila Poppy Laurel, and hand carved spoons by Annie Slack. Free street parking available.

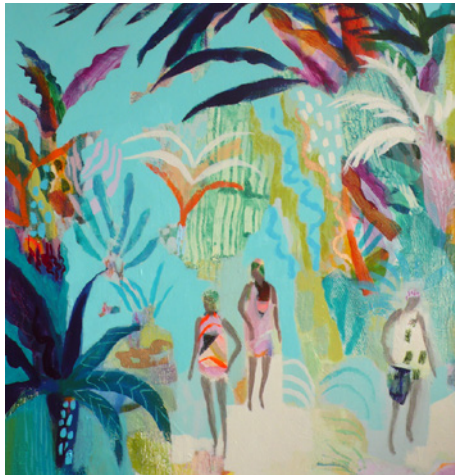
# Brighton Festival

Roll up, roll up  
From Sat 1  
May

Guest Director:  
**Lemn Sissay**

Arts outdoors, online and  
safely back on stage

UNIVERSITY OF SUSSEX  
ARTS COUNCIL  
ENGLAND



Seaside Jungle: Becky Blair (Detail) Photo by Hugh Fox

www.beckyblairartist.co.uk  
Instagram: beckyblairartist  
becky@beckyblairartist.co.uk  
07729 034 158

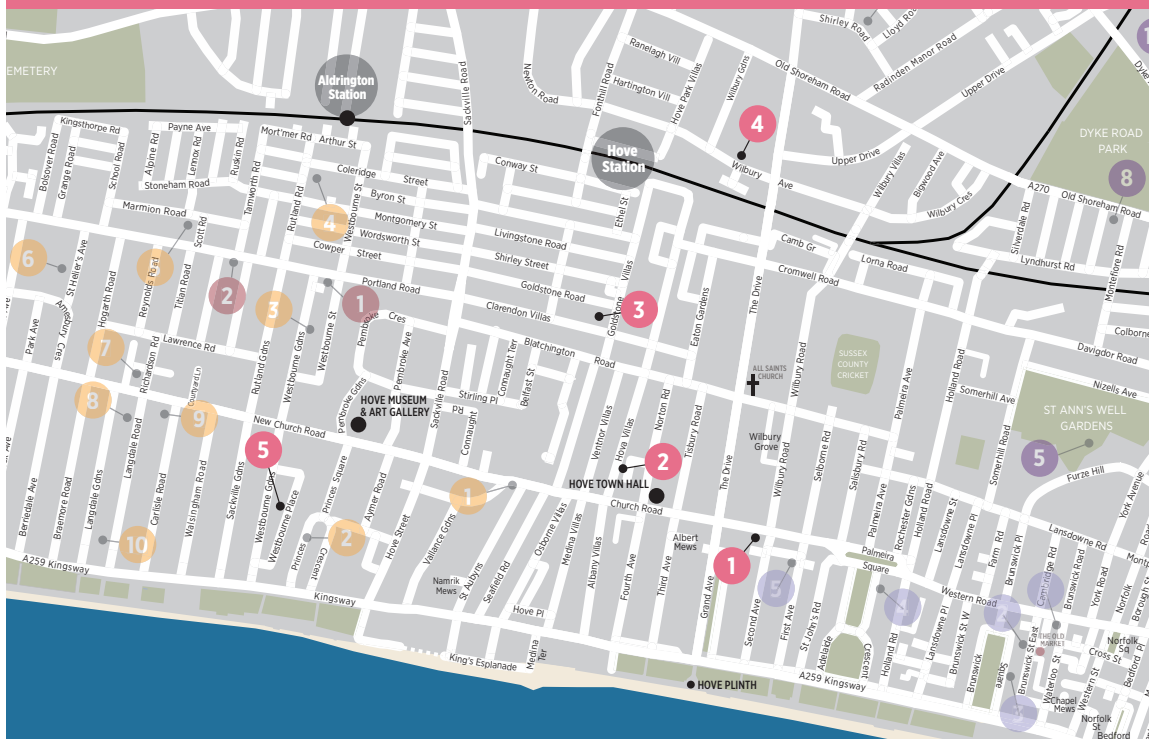
### HOUSE



11.00-17.00

M	T	W	T	F	S	S
24	25	26	27	28	29	30
31	1	2	3	4	5	6
7	8	9	10	11	12	13
14	15	16	17	18	19	20
21	22	23	24	25	26	27





## Hove Trail

**T**he Hove Trail has some great established and new venues this year, with studios, galleries and artists' own homes opening up their doors. The trail begins just north of the sea front's Hove Plinth, leads up to Wilbury Avenue then back down to Westbourne Place. Don't miss Dion Salvador Lloyd's 21st consecutive Open House along the way!

Some of the regular Hove Arts artists are sad not to be opening their doors this time, but will look forward to welcoming you back to visit them again next year.

### Travel details

**On foot** From Brighton: take the promenade or Western Road heading west. From Portslade/West Hove: take New Church Road or the promenade heading east.

**Train** Regular services to Hove Station from London and the South West.

**Bus** Hove Station 7, 81; Hove Town Hall, Church Road 1, 1A, 2, 2A, 6, 5, 5A, 5B, 25, 46, 49, 81, 81B, Hove Cricket Ground 81B; Old Shoreham Road/Hove Park 56

**Cycling** Smart Bike Share docks are at Hove Station, George Street, Hove Tesco, the seafront and throughout the city. Cycle lanes along the seafront from Brighton and Portslade and Grand Avenue, The Drive and Old Shoreham Road.

**Car** M23, A23, or A27 follow signs to Hove.  
Pay and Display bays throughout Hove.

## 1 Cameron Contemporary Art

1 Victoria Grove, 2nd Avenue, Brighton and Hove BN3 2LJ



Saxon Hill, Victoria Kite

Cameron Contemporary Art is an award winning independent art gallery dedicated to showing a changing programme of high quality established and exciting up and coming British artists.

Ranging from traditional to modern, figurative to abstract, each exhibition is accompanied by a selection of sculpture and ceramics.

Our Festival Exhibition is a rich and varied mixed exhibition of gallery artists, most with a strong Sussex connection.

[www.cameroncontemporary.com](http://www.cameroncontemporary.com)  
[info@cameroncontemporary.com](mailto:info@cameroncontemporary.com)  
 01273 727234

### GALLERY



11.00-17.00											
M	T	W	T	F	S	S					
24	25	26	27	28	29	30					
31	1	2	3	4	5	6					
7	8	9	10	11	12	13					
14	15	16	17	18	19	20					
21	22	23	24	25	26	27					

## 2 Hova Villas Studio

9a Hova Villas, Hove BN3 3DH



A sociable and relaxed home studio just off Church Road – a must stop on the Hove trail!

With two gardens, front and back, there's plenty of outdoor space to chill and take in the sunshine and creative vibes.

Browse prints, bags, paintings, rings, cards, clothes, crochet dolls and more...!

Enjoy delicious food and drinks available from Twit Two Bakery and Seasonal Snacks.

We hope you will leave feeling happier than when you arrived!

Instagram: [LucyLou.art](https://www.instagram.com/LucyLou.art)  
[lucyloudotart@gmail.com](mailto:lucyloudotart@gmail.com)  
 07805 116 949

### HOUSE



10.00-17.00											
M	T	W	T	F	S	S					
24	25	26	27	28	29	30					
31	1	2	3	4	5	6					
7	8	9	10	11	12	13					
14	15	16	17	18	19	20					
21	22	23	24	25	26	27					

TUTTON & YOUNG  
*present*

# ATELIER

BESIDE THE SEA



[WWW.ATELIER51BRIGHTON.COM](http://WWW.ATELIER51BRIGHTON.COM)

SHOP ✿ MAKING SPACE ✿ GALLERY

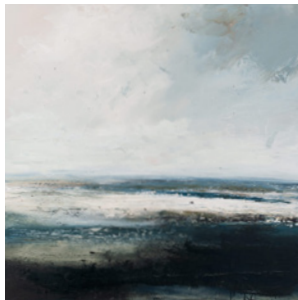
165 KINGS ROAD ARCHES BRIGHTON BN1 1NB

### 3 Dion Salvador Lloyd

18 Goldstone Villas, Hove BN3 3RQ



Open House 2019 Dion Salvador Lloyd



Lightstream Dion Salvador Lloyd



Hillside Dion Salvador Lloyd



Arctic Dion Salvador Lloyd

Brighton born established artist Dion Salvador Lloyd warmly welcomes you to celebrate his 21st consecutive year of Open House. He has taken to his studio to create new works during these challenging times, taking time to connect with his practice and focus on creating a new exhibition of contemporary oil paintings. These paintings are invitations to travel and dream, suggestive and familiar, a chance to wander through meadows and watch sea and landscapes unfold – we have been here before and we will return.

Represented by galleries in London and the UK.

Commissions undertaken.

Open by appointment on all other days and dates throughout the year

A huge thank you for all your support and kind messages especially over the last 18 months.

Comments from previous Open House visitors book:

*"Lovely to see you back"*

*"Wonderful to renew sight of these works"*

*"Incredible, as always, I feel renewed"*

*"Beautiful calming work"*

*"Always my favourite Open House"*

*"Stunning, welcoming exhibition"*

*"Lovely to meet you and thanks for opening your door"*

*"One if not the best Open House"*

*"These works are difficult to look away from"*

21 years

www.dionsalvadorlloyd.com  
info@dionsalvador.co.uk  
07718 450 745

HOUSE



10.00-18.00									
M	T	W	T	F	S	S			
24	25	26	27	28	29	30			
31	1	2	3	4	5	6			
7	8	9	10	11	12	13			
14	15	16	17	18	19	20			
21	22	23	24	25	26	27			



## 4 Art in Bloom

27 Wilbury Avenue, Hove BN3 6HS



Large horse head Robin Neild

This year we invite you to enjoy art and sculpture in our gardens. Art will be displayed creatively in the landscaped front garden and, moving down the side of the house, we open up into the walled rear garden. We will be exhibiting a selection of ceramics, sculpture, paintings, prints and jewellery.

Judith Berrill *Landscape paintings*  
 Sharon Griffin *Ceramic sculptures*  
 Karen Hollis *Floral paintings*  
 Chris Kampf *Garden sculptures*  
 Zoe Lakshmi *Ceramics and jewellery*  
 Robyn Neild *Bronze sculptures*  
 Jill Tattersall *Mixed media*  
 Tessa Wolfe Murray *Ceramics*

www.artinbloom.co.uk  
 karen@artinbloom.co.uk  
 07932 062615

### HOUSE



11.00-18.00													
M	T	W	T	F	S	S							
24	25	26	27	28	29	30							
31	1	2	3	4	5	6							
7	8	9	10	11	12	13							
14	15	16	17	18	19	20							
21	22	23	24	25	26	27							

## bip Art PRINTMAKING WORKSHOP BRIGHTON



e: bipart@rocketmail.com  
 p: 01273 603109

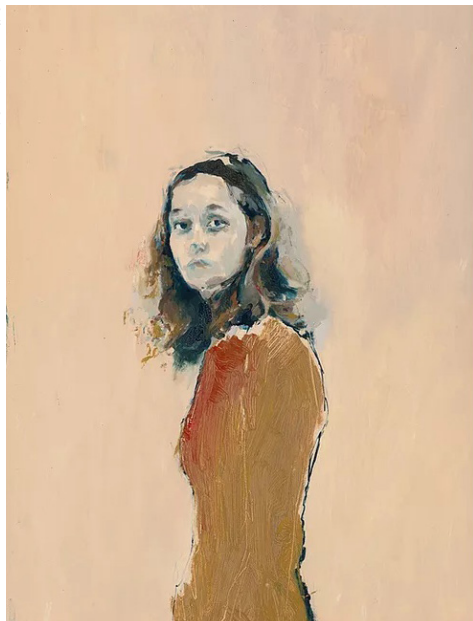
1a Arundel Mews, BN2 1GG

www.bip-art.co.uk

## 5 Westbourne Place Art Studios

28a Westbourne Place, Hove BN3 4GN

Self portrait: Morag Caister



Our art studio was established six years ago and we've had many creatives here during that time - currently we have mostly painters so expect to see a very eclectic mix of works. The newest of our artists was recently on TV and reached the semi finals of self portrait artist of the year 2020.

We have a mix of current and past artists showing at the Open House this year.

Gemma Challenger *Mixed media*  
 Mark Powell *Drawing*  
 Louise Searle *Painting*  
 Tamara Wildash *Other*

davej\_barker@hotmail.co.uk  
 07943 891 752

STUDIO/WORKSHOP



Louise Searle

David Barker *Painting*  
 Helen Wood *Print making*  
 Morag Caister *Painting*  
 Allicia Jackson-Pritchard *Painting*

10.00-16.00													
M	T	W	T	F	S	S							
24	25	26	27	28	29	30							
31	1	2	3	4	5	6							
7	8	9	10	11	12	13							
14	15	16	17	18	19	20							
21	22	23	24	25	26	27							

# Kempton



## Kempton Arts

[www.kemptonarts.org.uk](http://www.kemptonarts.org.uk)



**T**ake the Kempton Trail it's with many fantastic artists' homes, studios and galleries showing original art, printmaking and craft – and 2021 is all set to be another year of exemplary quality. The trail stretches from east of the Old Steine up to Lewes Crescent, via Queen's Park and Kempton Village. In between the venues are lots of interesting shops, cafes and delis to help you on your way.

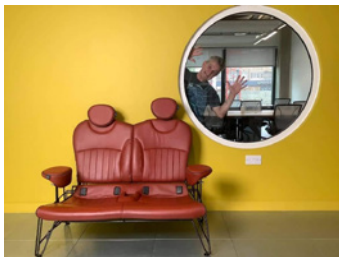
### Travel information

**Rail** It takes about 15 minutes to walk from the railway station to the Old Steine and the start of Kempton.

**Bus** The number 7 bus goes from the railway station to Kempton (direction Marina). The area is very well served by other buses from all parts of the city (see [www.buses.co.uk](http://www.buses.co.uk)).

## 1 Scavenger Design Brighton

Cuppa Joes, 28 St George's Road, Brighton BN2 1ED



Mini Cooper Mobile Scavenger Design Brighton

Scavenger has been up-cycling since the early 80's in many forms around Brighton. Being a skilled welder and fabricator, his main passion has been centred around the reuse of car interiors as creative furniture.

Now with a permanent retail shop window, Joe wants to showcase his imaginative creations, alongside vintage finds, but also a source of materials for others to be creative! What will you discover?

scavengerdesignbrighton.co.uk  
joehall1@live.co.uk  
44770 815 860

COMMERCIAL

08.30-17.00													
M	T	W	T	F	S	S							
24	25	26	27	28	29	30							
31	1	2	3	4	5	6							
7	8	9	10	11	12	13							
14	15	16	17	18	19	20							
21	22	23	24	25	26	27							

## 2 33 Belle Vue Court

33 Belle Vue Court, Belle Vue Gardens, Brighton BN2 0AN

We're looking forward to welcoming visitors up to the 6th floor again for art, design and a wonderful view. Our small but beautiful flat, overlooking the sea, will have varied and interesting work to see, including: new large portraits by Lucy Taylor, bright and funky homewares by Plain Jayne Design and modern mixed media by Pete Mountford.

**Lucy Taylor**  
*Painting and jewellery*  
**Plain Jayne Design**  
*Quirky Jesmonite interior decor*  
**Pete Mountford**  
*Mixed media*



Screen Time Lucy Taylor

Instagram: lucyjoannetaylor2019  
lucyjoannetaylor@hotmail.co.uk  
07956 599 207

HOUSE



11.00-17.00													
M	T	W	T	F	S	S							
24	25	26	27	28	29	30							
31	1	2	3	4	5	6							
7	8	9	10	11	12	13							
14	15	16	17	18	19	20							
21	22	23	24	25	26	27							

## 3 At The Coach House

22 Walpole Road, Brighton BN2 0EA



The Coach House is a unique space in the heart of Kemptown dedicated to the creative arts, nature and education.

This year we are delighted to be hosting works of Scarlet Ostick, Matty Evo, Margaret Shillan, Tracey Grooms, Jackie Bennett, Danny Lloyd and Maddie Millett.

We have some wonderful workshops alongside with events, talks and happenings... but first you must walk up the drive!

We are open every weekend, and weekdays by appointment.

www.atthecoachhouse.co.uk  
siglendinginning@googlemail.com  
07796 054 442

HOUSE



12.00-18.00													
M	T	W	T	F	S	S							
24	25	26	27	28	29	30							
31	1	2	3	4	5	6							
7	8	9	10	11	12	13							
14	15	16	17	18	19	20							
21	22	23	24	25	26	27							

## 4 Faye Bridgwater

10 Dawson Terrace, Brighton BN2 0EL



Improve Myself - Faye Bridgwater  
(Photo by Anne Lottierberg)

International, multi-award winning, contemporary artist, **Faye Bridgwater**, is opening for one joyous weekend with the exciting launch of her new expressive Summer Collection featuring her latest original paintings alongside her brand new Limited Edition prints.

2021 started off with a bang for Faye with a sell out exhibition, *Ritual and Repetitions* at Glyndebourne's Gallery 94. She has also been featured with Artist & Illustrator, Coast magazine, Sky Arts, BBC South East and BBC RadioSussex. Open weekend 18-20 June only.

www.fayebridgwater.com  
faye@fayebridgwater.com  
07811 967 257

HOUSE



10.00-17.00													
M	T	W	T	F	S	S							
24	25	26	27	28	29	30							
31	1	2	3	4	5	6							
7	8	9	10	11	12	13							
14	15	16	17	18	19	20							
21	22	23	24	25	26	27							



## 5 Number 38

38 Arundel Place, Kempdown, Brighton BN2 1GG

Blackbird Michael Spark



A selection of original monotypes and paintings, based on drawings from the landscape.

Michael Spark is exhibiting for the first in Brighton but has exhibited widely in the UK.

[www.michaelspark.com](http://www.michaelspark.com)  
[info@michaelspark.com](mailto:info@michaelspark.com)

HOUSE



12.00-17.00									
M	T	W	T	F	S	S			
24	25	26	27	28	29	30			
31	1	2	3	4	5	6			
7	8	9	10	11	12	13			
14	15	16	17	18	19	20			
21	22	23	24	25	26	27			

## 6 East Side Print

Unit 2, Arundel Mews - Entrance on Eastern Place, Brighton BN2 1GG



East Side Print studio Moose Azim

Welcome to East Side Print, a new creative space offering short courses in screen printing, fabric printing and photography and a studio membership scheme. Selling limited edition photographs, screen prints, unique cards and printed goods by studio members.

See printmaking and cyanotype demonstrations\* and have a go yourself (\*follow us on Instagram for updates). Find out more about the studio, courses, techniques and membership in a safe and relaxed environment with monitored studio entry.

[www.eastsideprint.org/](http://www.eastsideprint.org/)  
[info@eastsideprint.org](mailto:info@eastsideprint.org)  
 01273 694976

STUDIO/WORKSHOP



11.00-16.00									
M	T	W	T	F	S	S			
24	25	26	27	28	29	30			
31	1	2	3	4	5	6			
7	8	9	10	11	12	13			
14	15	16	17	18	19	20			
21	22	23	24	25	26	27			

# Vote For Your Favourite Open House

The Best Open House Award, sponsored by Latest TV, offers you the opportunity to vote online for your favourite Open House. From the start of the festival simply visit the AOH website: [www.aoh.org.uk](http://www.aoh.org.uk) and follow the links to place your vote for the house that you believe best captures the spirit of the Artist Open Houses. The houses shortlisted by public vote will go through to the final to be visited by the Latest team for selection for the Award.



Winner of the Best Open House Award 2020, Sarah Jones - and her Open House, Milton House.



[www.thelatest.co.uk](http://www.thelatest.co.uk)

[www.aoh.org.uk](http://www.aoh.org.uk)

# GEOFFMACCORMACK DAVIDBOWIE

## 73 - 76 rock "n" roll with me

Photographs by Geoff MacCormack

18 May 2021 – 23 January 2022  
Brighton Museum & Art Gallery

Admission fee payable  
Please see our website for advanced  
booking details and opening times  
[brightonmuseums.org.uk](http://brightonmuseums.org.uk)  
03000 290900



Royal Pavilion & Museums Trust



Supported using public funding by  
**ARTS COUNCIL  
ENGLAND**





# Seafront



## Seafront

**T**he Seafront Trail is a brand new trail for this year's AOH Festival. We are a group of artists' studios and galleries stretching along Brighton seafront, between the piers, and including the Artist Quarter - a unique half mile of creativity. This is the first time the Artist Quarter has taken part in the AOH Festival, but with the great location and unrivalled range of traditional fine art and craft disciplines on show, it will definitely be a memorable experience for visitors.

Start your journey by exploring the wealth of amazing artists and creatives exhibiting all along the Kings Road Arches, both inside and out along the esplanade, then finish with more great art at the West Pier Centre - and maybe call in for refreshments at the i360 café!

### Travel Information

**Walking:** The Trail is flat and easy to access on foot or bike from King's Road. Start at Brighton (Palace) Pier and walk west - or start at the British Airways i360 and walk east.

**Rail, Bus** The Seafront Trail is situated within easy walking distance of Brighton railway station, which is served well by trains, buses and taxis.

**Car** There are pay and display spaces on Kingsway and Madeira Drive. Alternatively, you can use The Lanes or Regency Square car parks.



## 1 The Artist Quarter 1

247, Kings Road Arches, Brighton BN1 1NB



The first section of the Artist Quarter showcases a diversity of styles and techniques in an outdoor area between Cici's Gallery and Kings Arch Gallery. Work ranges from large scale resin seascapes, through animal paintings and prints, to original drawings and collage. Go inside at 247 Kings Arch Gallery to explore further collections from a range of contemporary British artists.

Cici's Gallery *Mixed media*  
Zorian Mathews *Painting*  
Patrick Metcalfe *Drawing*  
Elsie Grace *Collage*  
Hilary Crozier *Ceramics*  
Amy Dury *Painting*

linktr.ee/Artist\_Quarter  
patrickmetcalfeis@gmail.com  
07773 801 551

GALLERY



12.00-17.00						
M	T	W	T	F	S	S
24	25	26	27	28	29	30
31	1	2	3	4	5	6
7	8	9	10	11	12	13
14	15	16	17	18	19	20
21	22	23	24	25	26	27

## 2 The Artist Quarter 2

242, Kings Road Arches, Brighton BN1 1NB



Continuing on from the first Artist Quarter section, visitors can take in the array of unique, expertly crafted items and visually striking artworks displayed in the outside space stretching between Ding Dong Delights and Brighton Gallery 242. Here work is exhibited both within the gallery and outside.

Jason Bennett *Jewellery*  
Heidi Rhodes *Textile*  
Stephen Connott *Collage*  
Deb Pasley *Mixed media*  
Zoe Ross *Mixed media*

linktr.ee/Artist\_Quarter  
patrickmetcalfeis@gmail.com  
07773 801 551

GALLERY



12.00-17.00						
M	T	W	T	F	S	S
24	25	26	27	28	29	30
31	1	2	3	4	5	6
7	8	9	10	11	12	13
14	15	16	17	18	19	20
21	22	23	24	25	26	27

## 3 The Artist Quarter 1

235, Kings Road Arches, Brighton BN1 1NB



The third section of the Artist Quarter comprises an outside space running from Tina Davies Gallery to So Arch Gallery. You'll be able to see an eclectic array of different art and buy beautiful gifts, all the while enjoying the sun and the atmosphere of the Artist Quarter and Brighton Beach.

Miranda Ellis *Glass sculpture*  
Ailynn Cruz *Hand stamped cutlery and gifts*  
Simon Sykes *Painting and craft*  
Martin Thomas *Painting and prints*  
Ant Fox *Painting*  
Tina Davies *Painting and pottery*

linktr.ee/Artist\_Quarter  
patrickmetcalfeis@gmail.com  
07773 801 551

GALLERY



12.00-17.00						
M	T	W	T	F	S	S
24	25	26	27	28	29	30
31	1	2	3	4	5	6
7	8	9	10	11	12	13
14	15	16	17	18	19	20
21	22	23	24	25	26	27

## 4 Sarah Mitchener

West Pier Centre, 103-105 Kings Road Arches, Brighton BN1 2FN

Paintings, sketches, prints and cards. From semi abstract Downs, woodlands and beaches to huge fish illustrations and colourful West Pier prints. I've exhibited in London and local galleries, been a finalist in the Sunday Times Watercolour competition. But how lucky... exhibiting right on the seaford with a view of the West Pier!

Sarah Mitchener  
*Painting*

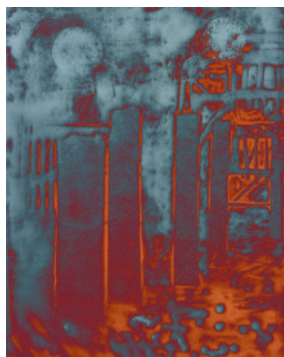
Find me on Instagram and Facebook then come and say hi.  
Art and Summer on Brighton Beach....at last!

Insta: sarah\_mitchener\_art  
sarahmitchener@yahoo.co.uk  
07759 998 044

COMMUNITY

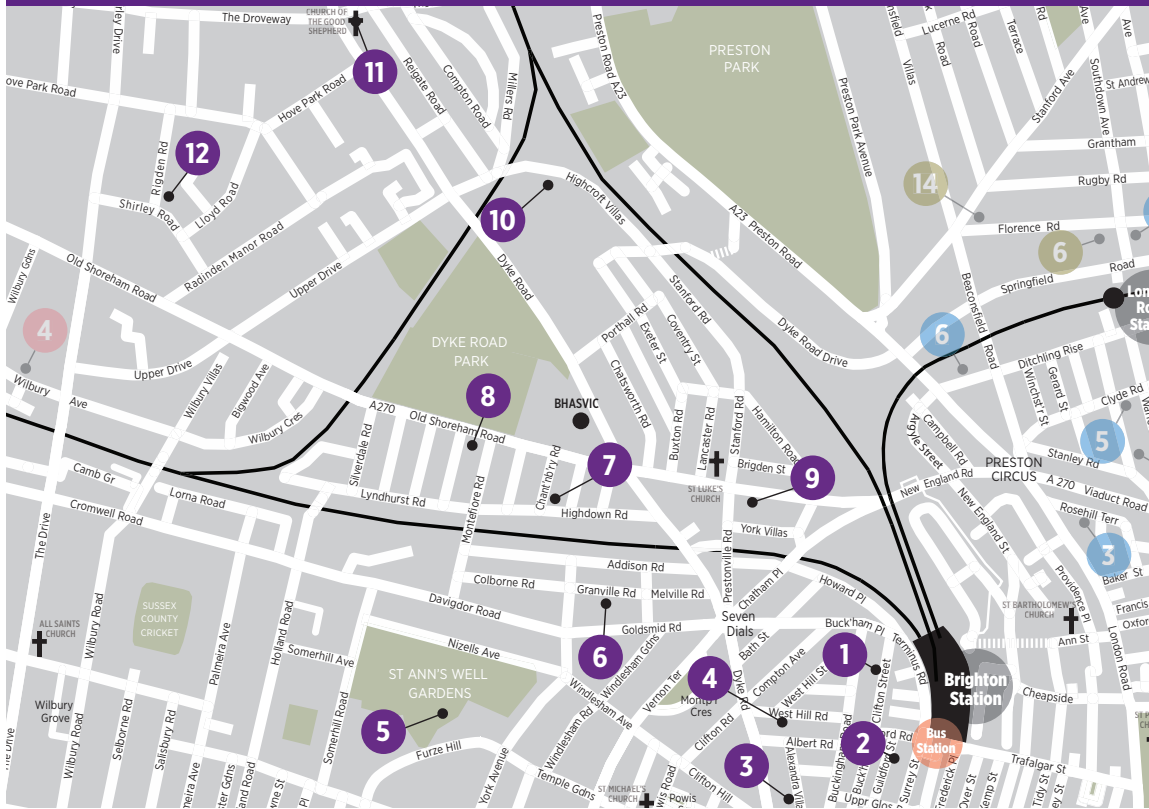


11.00-18.00						
M	T	W	T	F	S	S
24	25	26	27	28	29	30
31	1	2	3	4	5	6
7	8	9	10	11	12	13
14	15	16	17	18	19	20
21	22	23	24	25	26	27



A tale of Many Moors: Sarah Mitchener

# Seven Dials



## Seven Dials Artists

[www.7dialsart.com](http://www.7dialsart.com)

**S**even Dials is a vibrant Trail, with a diverse range of venues hosting an exciting line up of Artists, Designers and Makers. This year we have extended our boundary to welcome venues going north up Dyke road and there's a new weekend pop up in St Ann's Well Gardens.

Find something special away from the high street, beautiful artwork, handcrafted gifts or simply a great opportunity to meet the artists and visit their creative homes and exhibitions.

The area is full of community spirit, especially this year! Lots of local bars and cafe's are open with outside space.

### Travel information

**Walking** The trail is an easy walking route close to Brighton Station and the town centre.

**Bus** 7 stops at Dials roundabout towards Hove; 14, 14C and 27 travel along Dyke Road; 56 turns off at Old Shoreham Road.

**Rail** Brighton Station for London, Portsmouth and Southampton.

**Bike** Cycle lanes along Old Shoreham Road and part of Dyke Road

**Car** Pay and display bays throughout the trail.

### Sponsors

Kindly of Brighton  
[www.kindlyofbrighton.com](http://www.kindlyofbrighton.com)

T @ the Dials  
Facebook @TatTheDials

Austin Rees  
[www.austinrees.com](http://www.austinrees.com)

Seven Cellars Wine Merchants  
[www.sevencellars.co.uk](http://www.sevencellars.co.uk)

Pembertons  
[www.pembertons.co.uk](http://www.pembertons.co.uk)

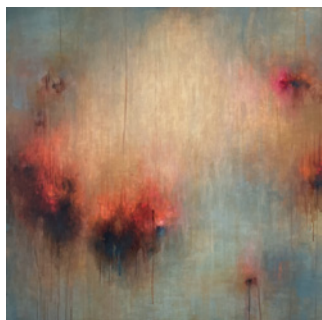
Roger Mason Framers  
[rogerneilmason@gmail.com](mailto:rogerneilmason@gmail.com)

7Dials Art  
[www.7dialsart.com](http://www.7dialsart.com)



## 1 Abigail Bowen

22 Clifton Street, Brighton BN1 3PH



*The Edge of The Rainbow*  
Abigail Bowen  
Oil on Canvas 100 x 100cm

I paint *The Edge of The Rainbow* a space where all beauty, magic and art exists. I use layers of thin runny oil paint to create shimmering glazes of colour that vibrate and change in the light. As I apply each translucent layer I like to imagine that light and air is captured within the painting, allowing it to breathe and come alive.

I was born in Brighton and graduated in Fine Art from Chelsea School of Art and Design.

www.abigailbowen.com  
info@abigailbowen.com  
07753 747 307

11.00-17.00

M	T	W	T	F	S	S
24	25	26	27	28	29	30
31	1	2	3	4	5	6
7	8	9	10	11	12	13
14	15	16	17	18	19	20
21	22	23	24	25	26	27

HOUSE



## 3 Alizeti Creative

Side flat 1, 3 Alexandra Villas, Brighton BN1 3RE



*Gelli print* Renee Graham Adriani

Renee Graham  
Adriani  
Mixed media and  
paintings  
Jon Wilmot  
Sculpture and  
jewellery  
Tom Adriani  
Photography and  
giclee prints

Come and be inspired by all the exciting new work on show at this lovely central venue with its beautiful tranquil garden!

We are showcasing a diverse collection of affordable and original art by several artists, including

unusual nature-inspired gelli-prints, stunning photo-montage giclee prints, outdoor sculpture and jewellery based on original ancient artefacts, original paintings, photography, textiles, hand painted stones and much more.

Etsy: AlizetiCreative  
reneeoutthere@yahoo.co.uk  
07770 287 245

11.00-17.00

M	T	W	T	F	S	S
24	25	26	27	28	29	30
31	1	2	3	4	5	6
7	8	9	10	11	12	13
14	15	16	17	18	19	20
21	22	23	24	25	26	27

HOUSE



## 2 Walter Wolf Gallery

32 Guildford Street, Brighton BN1 3LS



*An iceberg through a slaughterhouse window* Mark Walter

Chrissy McLaughlan  
Painting

Zoe Toolan  
Mixed media

Mark Walter  
Painting

markwalterartist.com  
markwalterartist@gmail.com  
07870 370 326

10.00-17.00

M	T	W	T	F	S	S
24	25	26	27	28	29	30
31	1	2	3	4	5	6
7	8	9	10	11	12	13
14	15	16	17	18	19	20
21	22	23	24	25	26	27

HOUSE



## 4 Peggy Poppleton's House

20 West Hill Road, Brighton BN1 3RT



*Spill 2 Chiddingfold* Rebecca Magner

Atelier Stella  
Ceramics  
Vivienne Ridley  
Jewellery  
Peggy Poppleton  
Prints and jewellery  
Ken Eardley  
Ceramics  
Stealthy Rabbit  
Papier maché  
Rebecca Magner  
Painting  
Sarah Lock  
Lighting  
Peter Slight  
Ceramics  
Holly M Atelier  
Accessories  
Sarah Gamble  
Collage  
Seven Seventeen  
Scented candles  
5ftinf  
Photography

Pop into Peggy's to enjoy a carefully curated selection of work by some of Sussex's finest artists and artisans.

Shortlisted for the Best Artists Open House Award 2020.

Insta: peggy\_poppleton  
peggyppoppleton@hotmail.co.uk  
01273 732331

11.00-17.00

M	T	W	T	F	S	S
24	25	26	27	28	29	30
31	1	2	3	4	5	6
7	8	9	10	11	12	13
14	15	16	17	18	19	20
21	22	23	24	25	26	27

HOUSE





## 5 St Ann's Well Gardens

St Ann's Well Gardens, Somerhill Road, Hove BN3 6UH



For one weekend only The Friends of St Ann's Well Gardens are delighted to welcome an array of over 30, talented artists to our beautiful park. Alongside a diverse selection of artists, we will have live music outside The Garden Cafe, which will be open for food and drink. So, bring a blanket enjoy the day and fingers crossed for sunshine!

stannswell@outlook.com  
07917 402652

10.00-16.00													
M	T	W	T	F	S	S							
24	25	26	27	28	29	30							
31	1	2	3	4	5	6							
7	8	9	10	11	12	13							
14	15	16	17	18	19	20							
21	22	23	24	25	26	27							

### OUTDOOR



## 6 Cecil Rice

14 Granville Road, Hove BN3 1TG

Vegetarian Rose Cecil Rice



Winner Best Open House Artist 2018.

Represented by galleries across UK.

Commissions undertaken.

Finally! We missed you! Cecil's Open House is back for its 22nd year of exciting new paintings and prints. Inspired by lockdown, this year's theme is Botanical: the power of plants to console, heal and renew. Atmospheric images of Brighton and Venice also feature.

We can also offer private appointments this year for you (and your friends): book on Eventbrite [cecilrice.eventbrite.co.uk](https://cecilrice.eventbrite.co.uk) or email us.

[www.cecilrice.co.uk](https://www.cecilrice.co.uk)  
[cecilrice@gmx.co.uk](mailto:cecilrice@gmx.co.uk)  
07436 004 833

### HOUSE



12.00-17.00													
M	T	W	T	F	S	S							
24	25	26	27	28	29	30							
31	1	2	3	4	5	6							
7	8	9	10	11	12	13							
14	15	16	17	18	19	20							
21	22	23	24	25	26	27							

## 7 Salon des Sources

4 Chanctonbury Rd, Hove BN3 6EL

*Ceramics and Mosaic*  
Jaq Buckeridge  
Stacey Manser Knight  
Angela Evans  
Denise Graham  
Barbara Butterworth  
Anna Tilson  
Carol Thompson

Renewal: Jaq Buckeridge



*Painters and Illustrators*  
Carol Seatory  
Steve Carroll  
Pru Heath  
Dee Wadham

*Jewellery*  
Fiona Hutchinson  
Sarah Packington  
Kate Thompssett

*Homewares and Textiles*  
Halinka Fairies  
Susan Kennewell  
Madame Treacle  
Ver Ver Studio  
Melanie Hodge

We're back!

We've missed you!

Jaq Buckeridge is delighted to welcome you back into her home again for 2021. We have a houseful of absolutely gorgeous art and design from local talented makers who have been beavering away in preparation for the Salon des Sources exhibition.



Bees and Birds vase: Barbara Butterworth

All shown in a safe and friendly environment. The orange fridge is still here, along with the relaxing bijou garden.

Facebook/salondessources  
[jaqcards@ntlworld.com](mailto:jaqcards@ntlworld.com)  
01273 880385

### HOUSE



Salon des Sources has been shortlisted in the top 15 open houses for several years running.

Do pop along and see us, we can't wait to see you again!

11.00-18.00													
M	T	W	T	F	S	S							
24	25	26	27	28	29	30							
31	1	2	3	4	5	6							
7	8	9	10	11	12	13							
14	15	16	17	18	19	20							
21	22	23	24	25	26	27							

## 8 Montefiore Artists

Grace Eyre, 36 Montefiore Road, Hove BN3 6EP

Colours of madness: Kier Dean



Montefiore Artists will be opening their doors to an exciting exhibition featuring a diverse range and style of work, all made by artists with learning disabilities.

Like everyone, we have experienced an unusual year with the pandemic and as a reflection of this, the show will feature works mainly on paper as paintings and drawings. We will also have a range of pre-pandemic work in a variety of other mediums.

[www.grace-eyre.org](http://www.grace-eyre.org)  
[ewillcocks@grace-eyre.org](mailto:ewillcocks@grace-eyre.org)  
 01273 201900

### GALLERY



12.00-16.00

M	T	W	T	F	S	S
24	25	26	27	28	29	30
31	1	2	3	4	5	6
7	8	9	10	11	12	13
14	15	16	17	18	19	20
21	22	23	24	25	26	27

## 9 Slightly Scented

55 Old Shoreham Road, Brighton BN1 5DQ

Parrot Supernova: Richard Dawson



Contemporary artist Richard Dawson presents his beautiful collection of unique captured flowers. These delicate yet graphic images, are available as collectable limited edition prints.

[www.richarddawsonartist.com](http://www.richarddawsonartist.com)  
[richard@richarddawsonartist.com](mailto:richard@richarddawsonartist.com)  
 07590 928589

### STUDIO/WORKSHOP



11.00-16.00

M	T	W	T	F	S	S
24	25	26	27	28	29	30
31	1	2	3	4	5	6
7	8	9	10	11	12	13
14	15	16	17	18	19	20
21	22	23	24	25	26	27

## 10 Artshed Brighton

23 Highcroft Villas, Brighton BN1 5PS



Welcome to Artshed, at the end of our beautiful garden. We are excited to be showing our spring lockdown creations: wooden tableware, upcycled plastic bottle art, original paintings, prints and collage. Francesca Garlake, Hayley De Marcas, and Papier Maverick

Etsy: [ArtshedBrighton](https://www.etsy.com/shop/ArtshedBrighton)  
[artshedbrighton.com](http://artshedbrighton.com)  
[artshedbrighton@gmail.com](mailto:artshedbrighton@gmail.com)

### STUDIO/WORKSHOP



11.00-16.00

M	T	W	T	F	S	S
24	25	26	27	28	29	30
31	1	2	3	4	5	6
7	8	9	10	11	12	13
14	15	16	17	18	19	20
21	22	23	24	25	26	27

## Why Not Take Part?

If you live in the Brighton & Hove and surrounding area, you can open your house to take part in the Artist Open Houses festival.

To find out how to get involved, including how to join a local trail, have a look at the 'Artists info' section of our website:

[aoh.org.uk/artists-info](http://aoh.org.uk/artists-info)

You can also take part if you live outside the area, by becoming a guest artist exhibiting in someone else's Open House. For more information visit:

[artists-seeking-houses.aoh.org.uk](http://artists-seeking-houses.aoh.org.uk)

*Registration for Christmas 2021  
 Artists Open Houses will open  
 online in late August.*

## 11 Art @ Good Shepherd

Church of the Good Shepherd, 272 Dyke Road, Hove BN1 5AE

Jo Lieke



An excitingly eclectic exhibition from celebratory cards to original art pieces.

Allison Murphy *Scrumptious seascapes: wondrous wood reliefs*  
 David Diplock  
*Moorings and Meadows*  
 Filipe Brown  
*Splendid sculpture*  
 James Foley  
*Wabi-sabi ware; Pretty porcelain pottery*  
 Jo Lieke  
*Lush local landscapes*  
 Jo Sharpe  
*Stunning still life and seascapes*

Melvyn Walmsley  
*Picturesque photography*  
 Susanna Brown *Poignant portraits; captivating ceramics*  
 Suzi Lowe  
*Mesmerising mixed media*  
 Suzie Poyntz  
*Awesome abstracts*  
 Troy Ohlson *Luscious landscapes; glorious gifts*

Sa 14.30 - 18.00, Su 12.30 - 18.00

Instagram: goodshepherd2020  
 01273 553747

### COMMUNITY



## 12 Art at 21 - 1 Rigden Road

1 Rigden Road, Hove BN3 6NP

The Entry 'Artific on canvas 100cm x 100cm' Kate Scott



Nick Gardner  
*Painting*  
 Kate Strachan  
*Painting*  
 Milena Deparis  
*Photography*  
 Ingrid Boucher  
*Sculpture*  
 Gary Goodman  
*Painting*  
 Jo Delafons  
*Mixed media artist*  
 Kate Scott  
*Painting*

Returning for a second year, for one weekend only, this strong group of artists will be showing together in a pop up venue in Hove, a house very near Hove Recreational Ground and an easy walk from Hove Station, but remaining in the Seven Dials Trail.

Some sculpture will be shown outside in the garden.

Insta: artat21  
 info@katescottpaintings.com  
 07719 337676

### HOUSE



11.00-18.00											
M	T	W	T	F	S	S					
24	25	26	27	28	29	30					
31	1	2	3	4	5	6					
7	8	9	10	11	12	13					
14	15	16	17	18	19	20					
21	22	23	24	25	26	27					

## THE HOUSE OF EMBROIDERED PAPER presents

## THE REGENCY WARDROBE

at Firle Place

29th August -  
 26th October  
 2021



12 - 5pm

Sunday, Monday, Tuesday

Pre-booking required. Please visit:

[www.firle.com](http://www.firle.com) - [www.stephaniesmart.net](http://www.stephaniesmart.net)



FIRLE



Supported using public funding by  
**ARTS COUNCIL ENGLAND**

GreatArt







**Unearth our wild landscape  
through art and sound**

Award-winning artists | Sound installations | Workshops

**9 July – 12 September 2021**

# Summer of Sound

# Wakehurst

10 minutes from Haywards Heath.

[kew.org/wakehurst](https://www.kew.org/wakehurst)

Royal Botanic Gardens  
**Kew**



## West Hove Arts Trail

Facebook: West Hove Arts Trail

**W**est Hove Trail is a vibrant, fun and ever-growing trail, located in a lovely upcoming and easily accessible part of Hove, stretching between Sackville Road to the east and Boundary Road to the west.

Celebrating our 12th anniversary, the trail has been very successful, with members winning Best Open House Award on three occasions, and one of our artists was the AOH brochure cover artist in 2019.

The trail is a mix of friendly and eclectic houses and studios, exhibiting a wide range of fine art, design and crafts. Many open their gardens and offer delicious refreshments.

It's a great day out, strolling along the leafy streets and parking is usually easy and mostly free.

*\*Please note that not all venues open the last weekend, do check individual dates and times.*



### Travel Information

**Bus** Hove Station 7, 7A, 81 Church Road/Portland Road 1, 1A, 2, 2A, 5, 5A, 5B, 6, 25A, 46, 48, 49A.

**Rail** Hove Station, Aldington Station, Portslade Station.  
Regular services from London Victoria, Southcoast Line and Brighton.

## 1 Treacle & Ginger

162 Church Road, Hove BN3 2DL



Treacle & Ginger: Lisa Green

Welcome to Treacle & Ginger, we are an independent artisan shop/cafe, selling work by local artists and makers, alongside delicious cake and coffee, served in our pretty courtyard or available to takeaway.

You may recognise many of the artists and makers from Aymer Arts, our open house for many years. We have a wonderful selection of painting, print, textiles, ceramics, apothecary, plants, sculpture, jewellery, greetings cards and handmade chocolate. Perfect gifts and collectible pieces.

www.treacleandginger.com  
info@treacleandginger.com  
07816 834 425

11.00-17.00

M	T	W	T	F	S	S
24	25	26	27	28	29	30
31	1	2	3	4	5	6
7	8	9	10	11	12	13
14	15	16	17	18	19	20
21	22	23	24	25	26	27

### COMMERCIAL



## 2 Princes Crescent Presents...

14 Princes Crescent, Hove BN3 4GS



Outside The Gin Bottle: Sam Bailey



Oak Olive Bowl: Liv Cornall

Princes Crescent Presents... are opening our doors for the very first time to showcase a vibrant selection of artists, exhibiting original paintings, photography, prints, jewellery, ceramics, woodwork, textiles, accessories and gifts, the list goes on.

Visit us to meet the artists and discover the story behind every piece of work. Relax in the open garden, fill up with a cup of tea and some handmade cake or sample food from JuJu's Oriental Kitchen (Saturdays only).

### Sam Bailey Print and 3D art

Anah Coleman Painting  
Anna Thomson Ceramics  
Anna Tinner Photography  
Arthur Robbins Wood turning  
Bianca Williams Home accessories and textiles  
Cherry Parsons Painting  
Christine Ripley Crochet and knitted art  
Denise Jaques Contemporary mosaics  
Hannah Barratt Painting and print  
Ju Ju's Oriental Kitchen Authentic Asian cuisine

www.sambaileydesigns.co.uk  
hello@sambaileydesigns.co.uk  
07973 121241

### HOUSE



### Kai and Sunny Pen art

Liv Cornall Design Furniture and lighting  
Liza Morton Ceramics  
Martha Mitchell Homeware  
Renush Leather accessories  
Samantha English Jewellery and metal work  
Sarah Jones Print  
Sarah Packington Jewellery  
Ursula Vagas Contemporary art and paintings  
Gail Anderson Ceramics

11.00-17.00

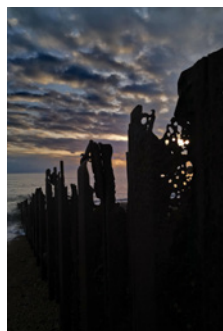
M	T	W	T	F	S	S
24	25	26	27	28	29	30
31	1	2	3	4	5	6
7	8	9	10	11	12	13
14	15	16	17	18	19	20
21	22	23	24	25	26	27



## 3 Bluebell Would

45 Westbourne Gardens, Hove BN3 5PN

How the Light Gets in: Bluebell Roebuck



**Bluebell Roebuck**  
*Photography and fluid art*  
**Mark Munroe-Preston**  
*Digital art*  
**Witchwood Candles**  
*Candles*  
**Bill Gowans**  
*Ceramics*  
**Anthea Stewart**  
*Ceramics*  
**Rebecca Lucas**  
*Contemporary landscapes*  
**Beachside Kiln**  
*Glass*  
**Allison Murphy**  
*Painting and relief prints*

Plus Maria Buttuller, Heather Parr, Crazy Cat Lady Boutique, Janina Chowanec, Beaubottletops, BrightonView, Jen Green, Woofing Fabulous, Polly Marx Evans, Marc Francis Prints, Abeille, Adele Scantlebury, SweetiePips and Lulu McQueen

Refreshments on request for a donation to Mind.

Instagram: bluebellroebuck  
bluebellwouldopenhouse@gmail.com  
07739 477 611

### HOUSE



11.00-17.00												
M	T	W	T	F	S	S						
24	25	26	27	28	29	30						
31	1	2	3	4	5	6						
7	8	9	10	11	12	13						
14	15	16	17	18	19	20						
21	22	23	24	25	26	27						

## 4 Studio 106

106 Coleridge St, Hove, Brighton BN3 5AA

Twenty professional artists in a large, airy, warehouse style open studio:

**Jael O'Connor** *Painting*  
**Emma Gale** *Textiles*  
**Andre Lichtenberg**  
*Photography*  
**Avis Lane Willan**  
*Painting*  
**Tom Diamantopoulos**  
*Painting*  
**Stephen Cavalier**  
*Animation*  
**Jon Clark** *Lighting*  
**James Cowland**  
*Painting*  
**Richard Berner**  
*Illustration*  
**Francis Anderson**  
*Painting*  
**Irene Marot** *Painting*



Under the midday sun: Jael O'Connor

**Christina Reading** *Painting*  
**Emily Stevens** *Painting*  
**David Storey** *Painting*  
**Heather Quin** *Mixed media*  
**Matt Ward** *Illustration*  
**Lucianna Whittle** *Painting*  
**Hong Dam** *Painting*  
**Grizelda** *Cartoonist*

www.studio106.co.uk  
hevquin@hotmail.co.uk  
07905 537 832

### STUDIO/WORKSHOP



10.00-17.00												
M	T	W	T	F	S	S						
24	25	26	27	28	29	30						
31	1	2	3	4	5	6						
7	8	9	10	11	12	13						
14	15	16	17	18	19	20						
21	22	23	24	25	26	27						

## 5 12 Scott Road

12 Scott Road, Hove BN3 5HN

Keyhole: Hannah Forward



Enter our home through a courtyard on a corner to enjoy an array of unique, contemporary work by local artists and makers on the ground floor of a stylish Victorian house.

**Hannah Forward**  
*Printmaking and painting*  
**Georgia Flowers** *Printmaking*  
**Christian Funnell** *Sculpture*  
**Joy Fox** *Mixed media*  
**Sarah Bidwell** *Textiles*

**Lola Lopez Alvarez** *Printmaking*  
**William Papworth** *Ceramics*  
**Annabet Wyndham** *Jewellery*  
**Daisy Jordan** *Mixed media*  
**Lucy Ogden** *Ceramics*  
**Del Thorpe** *Drawing*

www.georgiaflowers.co.uk  
hello@georgiaflowers.co.uk  
07747 462 962

### HOUSE



11.00-17.00												
M	T	W	T	F	S	S						
24	25	26	27	28	29	30						
31	1	2	3	4	5	6						
7	8	9	10	11	12	13						
14	15	16	17	18	19	20						
21	22	23	24	25	26	27						

## 6 14 St Heliers

14 St. Heliers Avenue, Hove BN3 5RE

Behind Bars: Stuart Smith



A warm welcome awaits you at No.14. Meet the artists, be inspired by a diverse and stimulating mix of arts and crafts, refresh yourself in our peaceful garden.

**Stuart Smith** *Constructions and painting*  
**Tina O'Donnell** *Silver jewellery*  
**Caroline Chilton** *Hellyer Ceramics*  
**Sophie Rankin** *Illustration*  
**Kirsty Benkel** *Photography*  
**Lucy Smith** *Glass*

**Robert Matusiewicz** *Woodbits*  
**Nick Flowers** *Printmaking*  
**Suzie Wainman** *Painting*  
**Jenn Adamson** *Contemporary batik*  
**Louise Mabbs** *Textiles*  
**Anna Smith** *Textiles*

www.stuartsmith.portfoliobox.me  
stuartsmith217@gmail.com  
01273 775968

### HOUSE



11.00-17.00												
M	T	W	T	F	S	S						
24	25	26	27	28	29	30						
31	1	2	3	4	5	6						
7	8	9	10	11	12	13						
14	15	16	17	18	19	20						
21	22	23	24	25	26	27						

## 7 Lara Bowen Contemporary

Unit Nine Lion Mews, Richardson Road, Hove BN3 5RA

Sophie Abbott *Abstract painting*  
Susan Ashworth *Still life oil painting*

Becky Blair *Figurative and landscape*

Lara Bowen *Oil painting*

Natasha Coverdale

*Floral prints*

Benedict Gubb *Oil painting*

Kate Henderson

*Abstract sculpture*

Sam Lock *Abstract painting*

Guy Stevens *Stone sculpture*

Sarah Weedon *Oil landscapes*

Representing a carefully selected collection of new work by established and emerging artists from the South East, working in media from oils to inks, silkscreen to stoneware.

The easily accessible and airy venue has a gallery at the front, behind which is Lara's painting studio. Artists include Sophie Abbott, Susan Ashworth, Becky Blair, Benedict Gubb, Kate Henderson, Sam Lock, Guy Stevens and Sarah Weedon plus some surprise guests.

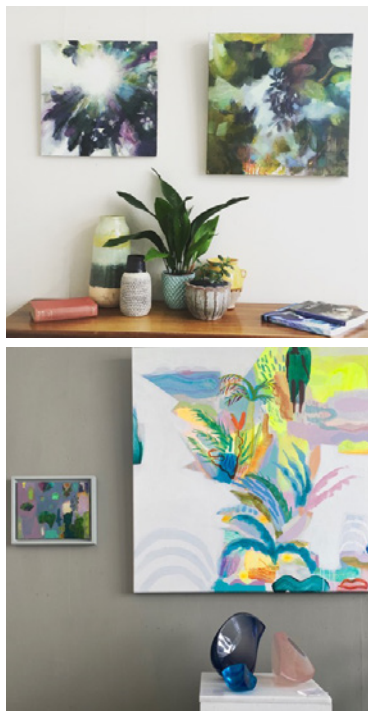
Plus special guests

www.larabowencontemporary.com  
larabowen@me.com  
07909 511 159

10.30-17.00

M	T	W	T	F	S	S
24	25	26	27	28	29	30
31	1	2	3	4	5	6
7	8	9	10	11	12	13
14	15	16	17	18	19	20
21	22	23	24	25	26	27

### GALLERY



## 8 Ilana Richardson & Guests

66 Langdale Gardens, Hove BN3 4HH

Lunch by the Sea: Ilana Richardson



Ilana Richardson *Paintings and prints*  
Shirley Trevena *Painting, prints and books*

Shefton Kaplan *Domestic pottery*  
Colleen Slater *Photography*

Nick Orsborn *Cicada jewellery*  
Terry Guile *Jewellery*

Ilana's evocative, sun-drenched Mediterranean paintings and Shirley Trevena's exquisite, vibrant still lifes make this venue a top choice.

After many years of exhibiting in London and worldwide, Ilana warmly welcomes you to her Open House

The two renowned watercolour artists are joined by an exhibition of photography, pottery and jewellery.



Two Flowers in a Blue Vase: Shirley Trevena

www.ilana-richardson.com  
art@ilana-richardson.com  
07947 327690

11.00-17.00

### HOUSE



M	T	W	T	F	S	S
24	25	26	27	28	29	30
31	1	2	3	4	5	6
7	8	9	10	11	12	13
14	15	16	17	18	19	20
21	22	23	24	25	26	27

## 9 Clare Maria Wood

68 Carlisle Road, Hove BN3 4FS



A Moonlight Song: Clare Maria Wood

I see my paintings as a way of conveying an emotional connection to the land, sea, and sky. I use sensitive mark-making combined with bold, gestural strokes, to transcend the viewer to space beyond physical sight. Perhaps

a place of nostalgia and wonder. Clare's abstract paintings have been selected for shows at the Royal Academy of Arts, The Royal Institute of Painters in Watercolours and the Society of Women Artists.

www.claremariawood.co.uk  
clare.m.wood@ntlworld.com  
07793 362991

### HOUSE



10.00-17.00									
M	T	W	T	F	S	S			
24	25	26	27	28	29	30			
31	1	2	3	4	5	6			
7	8	9	10	11	12	13			
14	15	16	17	18	19	20			
21	22	23	24	25	26	27			

## 10 Encounters

12 Langdale Road, Hove BN3 4HN



Enne: Khaled Alkhafaji

Welcome to our bold, challenging and provocative exhibition. Artistic dialogues of *Light and Hope* determine the curated show, offsetting our troubled and volatile times.

Unmissable Khaled Alkhafaji's photography. Shining light infuses Brandis' sculpture. Bagguley's paintings align with Zattarin's work in a dialogue of compassion.

A vibrant hope installation by Parejo and Anon is in tune with Lieberman's *Extended Ocean* work. A Digital Art Room to discover.

Also, enjoy browsing in our greatly enriched Arti-Shop.

www.encountersartspace.com  
Instagram: @encountersartspace  
Miladys@encountersartspace.com  
07773 171 556

### HOUSE



11.00-18.30									
M	T	W	T	F	S	S			
24	25	26	27	28	29	30			
31	1	2	3	4	5	6			
7	8	9	10	11	12	13			
14	15	16	17	18	19	20			
21	22	23	24	25	26	27			

## 11 The Round Space Studio

The Round Space Studio, 6 Worcester Villas, Hove BN3 5TB



Path from Saddlecombe: James Baker

We welcome you to our beautiful garden studio uniquely crafted in the round by the artist. James Baker is an artist, carpenter and maker displaying scenes of the South Downs, rustic wood furniture, mirrors and lamps. Refreshments available and a place to sit in the garden.

www.jamesbaker.org  
jamesbakerdesign@gmail.com  
07860 200 631

### HOUSE



11.00-17.00									
M	T	W	T	F	S	S			
24	25	26	27	28	29	30			
31	1	2	3	4	5	6			
7	8	9	10	11	12	13			
14	15	16	17	18	19	20			
21	22	23	24	25	26	27			

## 12 Art & Indian Tapas

17 Worcester Villas, Hove BN3 5TA



Sunset Seafings: Gill Copeland

Take yourself on an aromatic, taste and visual journey through Gill's award winning photography, complimented by Anita and Sarala's pop-up Indian Cafe, selling a range of Goan tapas delights.

Immerse yourself in Gill's work capturing the serene beauty in nature and life through seascape, landscape, flora and travel.

View *Where the Sea Meets the Shore* exhibition in the summer house and relax in the tea garden (cafe open 11am - 4pm).

www.gillcopeland.com  
gill@gillcopeland.com  
07812 403 016

### HOUSE



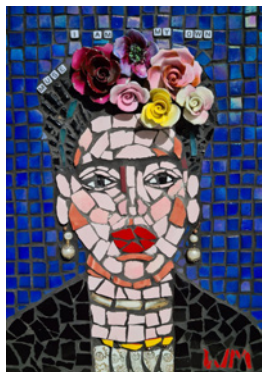
11.00-17.00									
M	T	W	T	F	S	S			
24	25	26	27	28	29	30			
31	1	2	3	4	5	6			
7	8	9	10	11	12	13			
14	15	16	17	18	19	20			
21	22	23	24	25	26	27			



# 13 Worcester Sauce

33 Worcester Villas, Hove BN3 5TA

Tartan Mouse Mosaic: Wanda McRae



Wanda McRae  
*Sculpture and mosaics*  
Debbie Forsdyke *Glass*  
Anna Cates *Turned wood*  
Teddy Salad *Mixed media*  
Ember Vincent *Ceramics*  
Sylvie Howitt *Paper*  
Sally Johnson *Mixed media*  
Art Hobbs *Mixed media*  
Beach Pottery *Ceramics*  
Glowing Gardens *Sculpture*  
Claire Nicholson *Jewellery*  
Ximena Heasman *Ceramics*  
Lou Light *Mixed media*  
Lara Sparks *Textiles*  
Kelly Bergwerf *Mixed media*  
Gillian Hills *Mixed media*  
Peter Haynes *Sculpture*

A treasure trove of artistic talent abounds.

Meet new artists and discover hidden gems in our pretty tea garden.

www.wandamcrae.co.uk  
w.mcrae@ntlworld.com  
01273 709631

## HOUSE



11.00-17.00

M	T	W	T	F	S	S
24	25	26	27	28	29	30
31	1	2	3	4	5	6
7	8	9	10	11	12	13
14	15	16	17	18	19	20
21	22	23	24	25	26	27

# 14 number forty

40 Leicester Villas, Hove BN3 5SQ

Echiraezer Paula Fahy



You will get a warm welcome at this lively and friendly open house. A range of media will be on display including painting, sculpture, photography, textiles, printing, mixed media and craft. Art is over two floors and into the garden. Can't wait!

Lily Adamsfield  
Mark Arrowsmith  
Paula Fahy  
Chris Formaggia  
Crafternoonhove  
Julie French  
Xanthe Mager  
Suzanne Mapledoram  
Trish McElhone  
Bronagh Shevlin  
Paula Soldini Kearns  
Michelle Thomasson  
Jo Winsom

Instagram: number\_forty\_aoh  
paula.fahy1962@gmail.com  
07900 911022

## HOUSE



11.00-17.00

M	T	W	T	F	S	S
24	25	26	27	28	29	30
31	1	2	3	4	5	6
7	8	9	10	11	12	13
14	15	16	17	18	19	20
21	22	23	24	25	26	27



## STAR BREWERY GALLERY LEWES

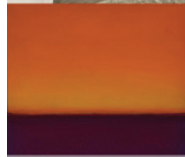
A DELIGHTFUL AND MULTIFUNCTIONAL VISUAL ARTS EXHIBITION SPACE



Peter Messer



Andrew Fitchett



Marco Crivello



Jacob Crivello



Marcus Ripley



Helen Hockin



Tom Benjamin

www.starbrewerygallery.com | starbrewerygallery@gmail.com

Star Brewery, Castle Ditch Lane, Lewes, East Sussex, BN7 1YJ



## 1 Jule's Emporium

100 Portland Road, Hove BN3 5DN



*The Sea Beast from the South East: Beav-Art*

Eclectic gallery and shop showcasing a collection of original works by local artists and makers. Relaxed and informal in style, we offer something for everyone.

**Beav-Art Painting**  
**Jasmine Mercer** *Illustration*  
**Vicky Gomez** *Print making*  
**Jan Sylvester-Church** *Mixed media*  
**Tony Sullivan** *Painting*  
**Jules O'Keefe** *Mixed media*

There will also be cards, textiles, jewellery and more from our special guest artists.

Open weekdays as well as weekends.

Facebook: julesemporium  
 julesemporium@gmail.com  
 01273 038127

We-Sa 10.00-17.00 Su & B/H 11.00-17.00

M	T	W	T	F	S	S
24	25	26	27	28	29	30
31	1	2	3	4	5	6
7	8	9	10	11	12	13
14	15	16	17	18	19	20
21	22	23	24	25	26	27

### GALLERY



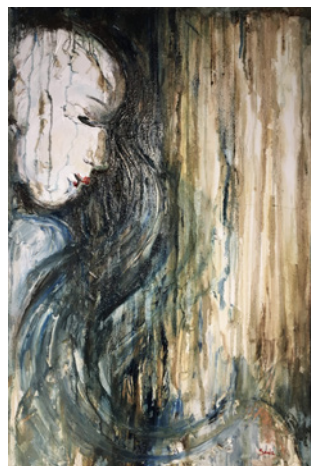
## 2 Mediterraneo

164 Portland Road, Hove BN3 5QL

**Sonia Di Bella**  
 Painting: oil on canvas and oil on wood, with textures created by palette knives and plaster.

Sonia digs up her roots, from shrubs and trees of the Isola Eolie, tracing these back to the XI Century, during the Moors domination in Sicily.

Born in Ventimiglia (IM), Italy, in 1979, Sonia started her art studies in Messina, Sicily (College School of Art and University Academy of Art). In 2001 she moved to Brighton.



*On My Way to You: Sonia Di Bella*

www.soniadibella.com  
 soniadibella@hotmail.com  
 447570 594 857

### COMMERCIAL



12.00-17.00

M	T	W	T	F	S	S
24	25	26	27	28	29	30
31	1	2	3	4	5	6
7	8	9	10	11	12	13
14	15	16	17	18	19	20
21	22	23	24	25	26	27



# Beyond Brighton

This year there are 10 venues outside the city of Brighton and Hove, leading you along the coast and over the Downs. Stretching from Stanmer Park, via Rottingdean and Peacehaven, to South Heighton, Lewes, Barcombe Mills, Wivelsfield Green and into Ditchling - the trail offers you a great day out exploring art in the Sussex countryside.



## 1 Beating Heart of the Windmill

Beacon Windmill, Marine Drive, Rottingdean BN2 7LB

Beating Heart of the Windmill - Amanda Rosenstein Davidson



Amanda  
Rosenstein  
Davidson Art  
Ray Gibson  
Photography  
Philip Alexander  
Sugg Sound  
installation  
Ben Gates Scrap  
percussive  
workshops

A retrospective  
exhibition in memory  
of percussive musician  
B.F. TIN.

Come add a personal  
message to the  
Memorial Bunting for  
a loved one.

Please make an appointment to visit

Instagram: amanda\_rosestein\_davidson  
amandasdavidson@gmail.com  
07763 584 330

12.00-17.00

M	T	W	T	F	S	S
24	25	26	27	28	29	30
31	1	2	3	4	5	6
7	8	9	10	11	12	13
14	15	16	17	18	19	20
21	22	23	24	25	26	27

COMMUNITY



## 2 Janet Roland Designs

82 Telscombe Cliffs Way, Telscombe Cliffs, Peacehaven BN10 7DE

Storm Brewing - Telscombe Cliffs Janet Roland



*In the Garden:* My wildlife-friendly woodland garden has been both a sanctuary and inspiration throughout the spring and summer of 2020.

Hand-painted glassware, decorative hanging tiles, printed cotton bags and lavender bags will be on sale in the summerhouse studio.

Acrylic paintings of the local landscape, ink drawings and prints of fossil forms, alongside a variety of craft items by local artists and makers will complete an interesting exhibition in the house.

Janet Roland Designs

janet.roland93@gmail.com  
07973 672 636

11.00-17.00

M	T	W	T	F	S	S
24	25	26	27	28	29	30
31	1	2	3	4	5	6
7	8	9	10	11	12	13
14	15	16	17	18	19	20
21	22	23	24	25	26	27

HOUSE



## 3 South Heighton Pottery

Heighton Road, South Heighton, Newhaven BN9 0HL

Pottery Garden Chris Lewis



Chris Lewis, Ceramics | Myth & Magic, A special exhibition

New ceramics by Chris Lewis, and a special exhibition of artefacts relating to Myth and Magic in our gallery.

The garden will be at its best this year, due to the later date of the festival. Come and enjoy delicious lunches and teas outside amongst the exhibits.

The exhibition will continue for an extra weekend, 3rd & 4th July.

www.chrislewisceramics.com  
chris@chrislewisceramics.com  
+447754 814 067

11.00-18.00

M	T	W	T	F	S	S
24	25	26	27	28	29	30
31	1	2	3	4	5	6
7	8	9	10	11	12	13
14	15	16	17	18	19	20
21	22	23	24	25	26	27

STUDIO/WORKSHOP



## 4 Chalk Gallery, Lewes

4 North Street, Lewes BN7 2PA

Chalk Gallery mixed window display



Established in 2005, Chalk is one of the first artist-led cooperative galleries in the UK and is a well-loved destination for art lovers, embedded in the culturally-rich county town of Lewes. We are showing approximately 80 new works of art by our 16 artists in a variety of media, styles, subjects and techniques, including paintings, mixed media, digital art, ceramics, glass, sculpture and original prints.

Open Thursday to Sunday everyday, plus Bank Holiday Monday 31 May.

www.chalkgallerylewes.co.uk  
chalkgallerylewes@gmail.com  
01273 474477

10.00-16.00

M	T	W	T	F	S	S
24	25	26	27	28	29	30
31	1	2	3	4	5	6
7	8	9	10	11	12	13
14	15	16	17	18	19	20
21	22	23	24	25	26	27

GALLERY



## 5 The Cowshed

The Cowshed, Upper Wellingham Barn, Wellingham Lane, Lewes BN8 5SN

Artists - The Red Mare - Jane Johansson



Jane Johansson  
Painting  
Julian Warrender  
Jewellery  
Tina Balmer  
Painting  
Te Amo Totes  
Bags

Take a trip out to the beautiful Sussex countryside and join me for my first Open Studio event at The Cowshed to see my colourful, abstract horse paintings. I am joined by jeweller and storyteller extraordinaire Julian Warrender,

Tina Balmer with her beautiful flower and dog paintings and Te Amo Totes with her eclectic boho style bags. Then rest for a while by the lake in the garden of this rustic retreat.

www.janejohansson.com  
jane@janejohansson.com  
07946 515 555

12.00-17.00

M	T	W	T	F	S	S
24	25	26	27	28	29	30
31	1	2	3	4	5	6
7	8	9	10	11	12	13
14	15	16	17	18	19	20
21	22	23	24	25	26	27

### STUDIO/WORKSHOP



## 6 The Field

Old Mill Bungalow Field, Barcombe Mills Road, Barcombe Mills BN8 5BS

Present: Michelle Dufaur



An opportunity to explore this scenic exclusively outdoor venue and wander once again amongst three local artist's work.

Martin Brockman *Clayland continues*, as clay excavated from the field will be formed into a collection of objects to be discovered above the ground.

Michelle Dufaur *Linear steel sculpture*

Simon Page *Generative sculptures in wood*

Access is via the Sussex Ouse Valley Way footpath, NE from Barcombe Mills car park, on Barcombe Mills Road.

Instagram: the\_field\_ao  
oldmillbungalow@gmail.com  
07890 842 141

12.00-17.00

M	T	W	T	F	S	S
24	25	26	27	28	29	30
31	1	2	3	4	5	6
7	8	9	10	11	12	13
14	15	16	17	18	19	20
21	22	23	24	25	26	27

### OUTDOORS



## 7 One Garden Brighton

Stanmer Park, Lewes Road, Brighton BN1 9SE



One Garden Brighton offers something different to explore and discover. Artists and makers will be joining us each weekend to showcase their work, host demonstrations and create new pieces; print makers, illustrators, potters and sculptors will be available in the Market Atrium and within the garden itself.

Our walled garden, rediscovered, reinvented, and open to the public for the first time, focuses on inspiration for the future. Whether for eating, meeting, pleasure, or plants, One Garden Brighton is a place for everyone.

onegardenbrighton.com  
hello@onegardenbrighton.com  
01723 890454

9.30-17.00

M	T	W	T	F	S	S
24	25	26	27	28	29	30
31	1	2	3	4	5	6
7	8	9	10	11	12	13
14	15	16	17	18	19	20
21	22	23	24	25	26	27

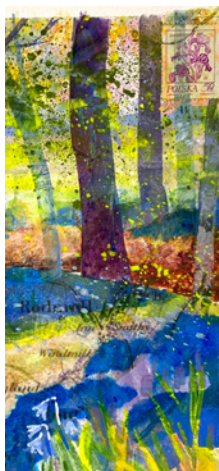
### INSTITUTION



## 8 Stanmer Creatives

Stanmer Craft Museum, Stanmer, Brighton BN1 9SE

An invitation to wander... Seana Mercedes Mallen



Nestled in the beautiful woodlands of Stanmer Park is a treasure trove of eclectic creativity.

Come and meet the artists and makers working in their dynamic studios within Stanmer Craft Museum.

Vaughan Fulford  
*Love Bespoke woodworking*  
A Woodland Workshop *Metal flowers and marquetry*  
B&S Blacksmithing *Artistic metalwork*  
Luna Moon Mosaic *Handcrafted crockery mosaics*  
Rosie Kennington *Painting*  
Eileen McKendrick-Flynn *Mixed media*  
Sara Harris *Glass*  
Grain Reclaimed *Recycled timber creations*  
Seana Mallen *Painting*

www.stanmercreatives.com  
seanamercades@gmail.com  
07980 863951

11.00-18.00

M	T	W	T	F	S	S
24	25	26	27	28	29	30
31	1	2	3	4	5	6
7	8	9	10	11	12	13
14	15	16	17	18	19	20
21	22	23	24	25	26	27

### COMMUNITY



## 9 Pruden and Smith

Pruden and Smith, 2 South Street, Ditchling BN6 8UQ

Platinum and gold diamond trap eternity ring  
Pruden and Smith



New jewellery designs inspired by the Sussex Coast and old favourites by the team at P&S, designed by Rebecca Smith. Featuring rough cut gemstones and diamonds, all jewellery is made using recycled gold, silver and platinum. The main exhibition focuses on jewellery

samples designed to inspire you to recycle your old unworn jewellery into something new, with explanations on the techniques and processes used to create each piece. Workshop tours will run throughout the festival.

www.prudenandsmith.com  
info@prudenandsmith.com  
01273 846338

10.00-17.00

M	T	W	T	F	S	S
24	25	26	27	28	29	30
31	1	2	3	4	5	6
7	8	9	10	11	12	13
14	15	16	17	18	19	20
21	22	23	24	25	26	27

STUDIO/WORKSHOP



## 10 Kirsty Asher

Long Acre, Church lane, Wivelsfield RH17 7RD

Finding Hope Kirsty Asher



Special event  
13th June: 10am-4pm

Artists:

Kirsty Asher Paintings  
Michele Bole Etching  
Kara Sanches Garden sculpture  
Paul Cox Iron work  
Penny Sanderson Painting  
Jenny Wightwick Ceramics  
Pauline Finlay Glass  
Rosie Harkin Crafts  
Suzie Gray Home produce

www.kirstyasherchaman.com  
kirstyac@hotmail.com  
07810 563 652

10.00-16.00

M	T	W	T	F	S	S
24	25	26	27	28	29	30
31	1	2	3	4	5	6
7	8	9	10	11	12	13
14	15	16	17	18	19	20
21	22	23	24	25	26	27

STUDIO/WORKSHOP



## Helen Brown

hello@helensprints.co.uk  
07747105421



helensprints.co.uk

## BLACK SHED STUDIOS



Painting holidays and residential art courses set in beautiful countryside in the heart of south east England. Suitable for beginners and experienced artists

www.blackshedstudios.co.uk  
sandyinfield@wix.com



# Online Only

This year there are a number of online-only Open Houses, offering galleries of artists' work and virtual tours.

You can find out more about the venues listed here at [www.aoh.org.uk/summer2021/online-only](http://www.aoh.org.uk/summer2021/online-only) where there are also many additional online-only Open Houses to view.

## Dorothy Stringer School

GCSE Photography Art Year 11



Stringer is delighted to be part of AOH 2021. Even though the school has been in and out of lockdown our students have continued to create some amazing work.

Instagram: [ds\\_art\\_department](https://www.instagram.com/ds_art_department)  
[communications@dorothy-stringer.co.uk](mailto:communications@dorothy-stringer.co.uk) 01273 852219

## Sue Haseltine

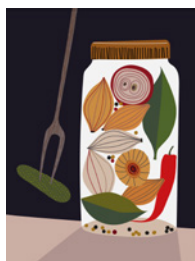


Sue is known for her beautiful landscape paintings and prints of the Sussex Downs and her depictions of other gorgeous locations. She also makes hand-printed lino-cut sewn products.

*Beachy Head Lighthouse :  
Sue Haseltine*

[www.suehaseltine.com](http://www.suehaseltine.com)  
[suehaseltine@yahoo.co.uk](mailto:suehaseltine@yahoo.co.uk) 07795 200 580

## Northern Lights



*Pickle Jar: Scofinn*

We are a Scandinavian style Open House showcasing a range of art and gifts created by our talented artists and makers. We hope you enjoy our online summer selection which includes prints, jewellery, cushions, bags, tea towels and ceramics.

[scofinn.com/northern-lights-open-house-artists](http://scofinn.com/northern-lights-open-house-artists)  
[scofinn@yahoo.com](mailto:scofinn@yahoo.com)  
07884 000 436

## Carolyn Genders



Carolyn Genders is showing recent ceramics and relief prints.

To see more, look also at her website. Please get in touch with Carolyn by phone or email with any questions.

[www.carolynlanders.co.uk](http://www.carolynlanders.co.uk) [info@carolynlanders.co.uk](mailto:info@carolynlanders.co.uk) 01273 309301

## Judy, Judy, Catriona



Judy Dwyer, Judy Stevens and Catriona Muir invite you inside their virtual Open House to view curious cats, Russian dolls, goddesses and men...

[www.catrionamuirartist.com](http://www.catrionamuirartist.com)  
[judy.stevens@zen.co.uk](mailto:judy.stevens@zen.co.uk)

*Cat Amongst the Flowers: Judy Dwyer*

## Chalk



*Beacon Ochre Throw and Cushion*

Kerry Stokes is weave designer for Chalk Wovens, offering a range of woven products: throws, cushions, hot water bottles and lampshades. Kerry worked as a freelance weave designer for variety of textile companies and taught at Central St. Martin's before setting up Chalk Wovens.

[www.chalkwovens.com](http://www.chalkwovens.com)  
[info@chalkwovens.com](mailto:info@chalkwovens.com)  
01273 389545

## The Trojan House

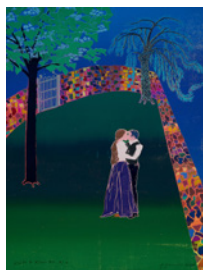


Troy and her Guest Artists have been busy in their studios creating gorgeous art, handmade crafts and lovely gifts for her 31st Trojan House. Buy direct from your favourites.

[www.trojanhouse.com](http://www.trojanhouse.com)  
[troyohsonart@gmail.com](mailto:troyohsonart@gmail.com)  
 07885 911 049

100% Cotton Tea Towels of Troy's  
 Original Art: Troy Ohlson

## Forces of Nature



Celebrating the Forces of Nature, Glyndebourne's Artists Open House online offering for 2021 includes new work inspired by the Glyndebourne Festival from our Associate Artist Tom Hammick.

[www.glyndebourne.com](http://www.glyndebourne.com)  
[nerissa.taysom@glyndebourne.com](mailto:nerissa.taysom@glyndebourne.com)  
 01273 812321

Káta's Kiss 2020 - 102 x 76 cm: © Tom Hammick. All rights reserved, DACS 2021

## Lemonwood Art

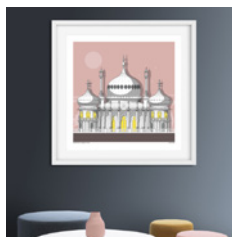


Painting is a beautiful form of escapism and a huge passion of mine. I create colourful, abstract pieces using acrylic and black and white portraits using pen, paint and charcoal.

Facebook: Lemonwood-Art  
[soph.jemon@outlook.com](mailto:soph.jemon@outlook.com)  
 07776 114 815

Nick Cave: Lemonwood Art

## Linescapes



Royal Pavilion Print - Pink: Linescapes

Landscape and Friends is a group of 5 eclectic artists working on different media offering paintings, illustrations, homeware, gifts, leather accessories, silk flowers and commissions.

[www.linescapes.co.uk](http://www.linescapes.co.uk)  
[contact@linescapes.co.uk](mailto:contact@linescapes.co.uk)  
 07710 651 172

## Innovative Textile Art & Batik



Celebrating 35 Years of The Batik Guild:  
 Jenn Adamson

Well known textile artists, members of The Batik Guild from The South East of England, celebrate their 35th Anniversary with innovative works using batik, printing and embroidery techniques.

[www.batikguild.org.uk](http://www.batikguild.org.uk)  
[adamson36a@yahoo.co.uk](mailto:adamson36a@yahoo.co.uk)  
 01273 418042

## Alan Spencer-Brooks HS ARMS



The Tidal Mill, Suffolk Spring Miniature:  
 Alan Spencer Brooks HS ARMS

I have been painting miniatures for 30 years. I paint in water colour and there are at least 1500 brushstrokes in a 6inch by 4.5 inch area. I am a RMS member in London Mall Galleries. I also am a member of the Hilliard Society of Miniature Painters.

[www.royal-miniature-society.org.uk](http://www.royal-miniature-society.org.uk)  
[alanspencerbrooks@gmail.com](mailto:alanspencerbrooks@gmail.com)  
 01444 236232

## Keep Art at Home



We are a collection of eleven contemporary artists, makers and photographers. Featuring work filled with colour, humour and creativity, we've curated a special online gallery where you can buy from our fantastic artists.

Insta: [keep\\_art\\_at\\_home](https://www.instagram.com/keep_art_at_home)  
[kirsteenokane@me.com](mailto:kirsteenokane@me.com)  
 01273 509557

## Woofing Fabulous Pottery



Brighton Pier Seagulls: Woofing Fabulous

Handmade pottery in Saltdean, Brighton.

Full of fun, quirky animals and birds created in my garden studio by the seaside.

Inspired by Brighton's comical seagulls, my dogs and garden.

[www.woofingfabulous.co.uk](http://www.woofingfabulous.co.uk)  
[liza@lizamorton.com](mailto:liza@lizamorton.com)  
 01273 858584

## Black Barn



[www.artinditchling.co.uk](http://www.artinditchling.co.uk)  
[k.bakerbrown@myphone.coop](mailto:k.bakerbrown@myphone.coop)  
07583 341 577

Four creatives invite you into our virtual studio.

**Jo Starkey**  
*Contemporary Landscapes*  
**Kate Baker-Brown**  
*Bookbinding, Textiles*  
**Louise Dale Chalmers**  
*2D, Sculpture*  
**Lisa Scholz**  
*Abstract Paintings*

## Sun Moth



*In the Darkness She Swims*  
Jenn Adamson

Expressive, emotional and evocative, **Aaron Thomason** is an abstract landscape and acrylic-pouring artist living in Hove. He creates original artworks using acrylic paint, texture paste and fluid mediums that draw the viewer in to his world.

Etsy: [SunMothArt](https://www.etsy.com/shop/SunMothArt)  
[sunmothart@gmail.com](mailto:sunmothart@gmail.com)  
07813 308 281

## Graham Read: Retrospective 12



Paintings, sketchbooks and works on paper. Curated work from an artist who practised throughout his lifetime, and yet rarely offered the results to be shared to a wider public.

Instagram: [grahamruskinread](https://www.instagram.com/grahamruskinread)  
[contact@grahamruskinread.com](mailto:contact@grahamruskinread.com)  
07986 649 567

*Untitled, Oil on Canvas, Graham Ruskin Read*

## TAKE CONTROL OF YOUR LIFE

Are you searching for  
more **fulfilment & clarity**?  
A new career? Help with your business?  
Or simply more time for you?  
**Speak to a LIFE COACH to start your journey**

Contact Sarah at **Life, Love & Me**  
[sblifeloveandme@gmail.com](mailto:sblifeloveandme@gmail.com) or visit [lifeloveandme.co.uk](http://lifeloveandme.co.uk)

**26 JUNE–  
24 OCT 2021**  
[pallant.org.uk](http://pallant.org.uk)

## BEN NICHOLSON FROM THE STUDIO



Ben Nicholson, 1946 (still life - cerulean), 1946, Oil on canvas over board, Pallant House Gallery, Chichester (Kearley Bequest through the Art Fund, 1989) © Angela Verren Taunt. All rights reserved, DACS 2021





BRIGHTON  
GIRLS

GDST

# Whole School Open Day 3rd July



Sign up now at  
[brightongirls.gdst.net](http://brightongirls.gdst.net)

contemporary hand-made  
jewellery and silverware



- Bespoke design service
- Remodelling, repairs & alterations
- Exciting collection of jewellery by carefully selected British designers

**[www.julianstephens.com](http://www.julianstephens.com)**

Visit our new website to get a  
FREE Ring Sizer and FREE delivery  
on all purchases.

supporting local craftsmen since 2003

  
Julian Stephens  
GOLDSMITH



37 GLOUCESTER ROAD  
BRIGHTON BN1 4AQ

**TEL: 01273 692 110**