

Winter 2022

# Artists Open Houses

26 Nov-11 Dec  
[aoh.org.uk](http://aoh.org.uk)



**AOH40**





HANNINGTONS  
BRIGHTON

# SHOP SMALL THIS CHRISTMAS



## **Sometimes the best things come in the smallest of packages**

Hanningtons is Brighton's hidden gem and home to your locally sourced, unique, and perfect gifts this Christmas. Peruse our Christmas gift guide from independent and artisan retailers and step into a world of Christmas wonder at Hanningtons.

We have a range of merry events for you to enjoy too, including Drag Queen Storytelling, photo moments, live music and festive food and drink.

*Why go anywhere else?*



@HanningtonsBrighton



@HanningtonsBTN



/HanningtonsBrighton

[www.hanningtonsbrighton.com](http://www.hanningtonsbrighton.com)



## Sponsors and Supporters



Victor Boorman & Co.



AOH are proud to be working with ROSA magazine  
as our print media partner



AOH would like to thank Brighton and Hove City Council,  
for their support during 2022.



Disclaimer: Whilst every care has been taken to ensure that the information given in this publication is accurate at the time of going to print, AOH cannot be held responsible for any variations, errors or admissions of which we have not been advised. We recommend that visitors confirm details for individual venues online before setting out. No recommendation is implied in any of the listings. Under no circumstances can AOH accept responsibility for any loss, damage or injury sustained by any member of the public visiting the Artists Open Houses Festival.

## Contents

Introduction	3
Travel	4
How to use the brochure	4
Brighton and Hove venue maps	5-7
Open Houses in Brighton and Hove	8-23
Open Houses outside Brighton and Hove	24
Maps for Open Houses outside Brighton and Hove	25



Cover image:  
Judy Stevens

### **Stopping by Woods on a Snowy Evening** Robert Frost

Whose woods these are I think I know.  
His house is in the village though;  
He will not see me stopping here  
To watch his woods fill up with snow.

My little horse must think it queer  
To stop without a farmhouse near  
Between the woods and frozen lake  
The darkest evening of the year.

He gives his harness bells a shake  
To ask if there is some mistake.  
The only other sound's the sweep  
Of easy wind and downy flake.

The woods are lovely, dark and deep,  
But I have promises to keep,  
And miles to go before I sleep,  
And miles to go before I sleep.

Design: Chris Lord

Print: Gemini Press [www.gemini-print.co.uk](http://www.gemini-print.co.uk)

#### **AOH Team**

Judy Stevens *Festival Director*

Chris Lord *Design and Development Director*

Cornelia Marland *Festival Manager*

Lisa Yousefi *Digital Communications*

Fiona McTernan *Advertising and Sponsorship*

Georgina Huguenet *Finance Manager*

Jessica Wood and Holly Finch *Press and PR*

Time Jukes *Website Development and Design*

#### **Thank you**

Roger Browning, Paul Clark, Rowena Easton, Alex Leith  
and Mark Tulley.

Our sponsors and supporters:

Gemini Print, Hamptons Estate Agents, Latest TV,  
Lawrence's Art Supplies, ROSA, Victor Boorman & Co.

Artists Open Houses Ltd is a not for profit company.  
Registration N<sup>o</sup>. 5420675 (England and Wales)

HOVE MUSEUM  
OF CREATIVITY



AN  
EXHIBITION  
OF WORK BY  
CERAMICIST AND  
TEXTILE ARTIST  
MATT SMITH

*Conehead Geishas with Pearls, 2018 Black Parian with Freshwater Pearls*

# MATT SMITH

## Who Owns History?

14 Oct 2022 – 20 Feb 2023

Open Mon, Thu, Fri, Sat & Sun  
10am–5pm  
Free admission  
[brightonmuseums.org.uk](http://brightonmuseums.org.uk)  
03000 290900



Supported using public funding by  
**ARTS COUNCIL  
ENGLAND**





# Artists Open Houses

## Winter 2022

26 November - 11 December

**T**his winter, visit the Artists Open Houses for a different Christmas shopping experience. It's an open secret that visiting the Winter Open Houses is the best way to find stylish and original Christmas gifts, meeting the artists in their homes and buying directly from them.

This year, Artists Open Houses include work by young artists with learning disabilities at the Jubilee Library, a seniors' residential centre, a group of artists producing a 'punk' Christmas tree with handmade baubles, and venues offering Indian and Nordic Christmas treats alongside the art.

Work includes painting, ceramics, homewares, crafts, jewellery, children's toys, Christmas cards, tree decorations and preserves. Easing your way into Christmas shopping, away from the high street crowds, whilst keeping things local supporting the city and region's artists, are just some of the pleasures of the Artists Open Houses Winter festival.

Simply look at the map online or in this guide and plan your route for a great day out, exploring all areas of the city, from West Hove to Rottingdean and beyond.

Don't forget to look at the online Virtual Open Houses strand, including video tours round artists' houses, as well individual online galleries. You can hear about the artists' work, the processes of making and ideas behind their work and buy directly from the artists and makers without leaving home!

### Opening times

Most Open Houses are open weekends from 11.00-17.00, but opening times may vary from venue to venue, so it is best to check individual brochure listings. Some venues are also open on weekdays.



# Travel information

## Bus

[www.buses.co.uk](http://www.buses.co.uk)

Travelling around the city to the Artists Open Houses couldn't be easier with the m-ticket app. For just £5.20 a day you can have unlimited travel on any Brighton & Hove Bus, including night buses. Tickets are available 24/7 and can be purchased to travel immediately or saved until later. Simply buy and activate your ticket, show the driver and away you go.

Download the Brighton & Hove Buses app from Google Play or Apple App Store now.

## Rail

[www.nationalrail.co.uk](http://www.nationalrail.co.uk)

## Bike Share Scheme

[www.btnbikeshare.com](http://www.btnbikeshare.com)

The system uses SoBi smartbikes, which are available for hire in central Brighton & Hove stretching along Lewes Road towards Brighton University and the University of Sussex. For any enquiries about using the scheme please contact [support@BTNBikeshare.com](mailto:support@BTNBikeshare.com) or call **01273 978096**.

## Cars and Parking

[www.brighton-hove.gov.uk/content/parking-and-travel/parking](http://www.brighton-hove.gov.uk/content/parking-and-travel/parking)

Brighton & Hove City Council operates several off-street car parks and numerous on-street pay & display parking spaces across the city. Most on street parking is now operated through the **PaybyPhone** app. Download the **PaybyPhone** app from your app provider or call **01273 458458** to register for phone payments if you don't have a smart phone. You can also pay at using cash at a PayPoint. Locate the nearest PayPoint at <https://www.paypoint.com/en-gb>

Although Brighton & Hove City Council has reduced the number of on street cash pay and display machines, there is usually one per street.

For the location of car parks [www.park-up.com/brighton](http://www.park-up.com/brighton)

**AppyParking** is an app that shows all the on-street and off-street parking spaces available [www.appyparking.com](http://www.appyparking.com)

## Follow AOH



[www.aoh.org.uk/newsletter](http://www.aoh.org.uk/newsletter)

# How to use the brochure

The maps on the next three pages, show venues within the city. The listings for those venues are on pages 8-23. Listings and maps for venues in the surrounding area are on pages 24-25.

Information on opening times, opening dates and facilities offered by venues, are at the bottom of each listing.

## Key to symbols

### Venue listing details

Contact details

01273 123456  
[www.myopenhouse.com](http://www.myopenhouse.com)  
[me@myopenhouse.com](mailto:me@myopenhouse.com)

**STUDIO OR WORKSHOP**

Facilities offered details below

Days and dates not open  
*light type on white background*

Opening times  
24hr clock  
11.00-17.00

M	T	W	T	F	S	S
22	23	24	25	26	27	28
29	30	1	2	3	4	5
6	7	8	9	10	11	12

Type of venue

Days and dates open  
*bold white type on brown background*

## Facilities offered

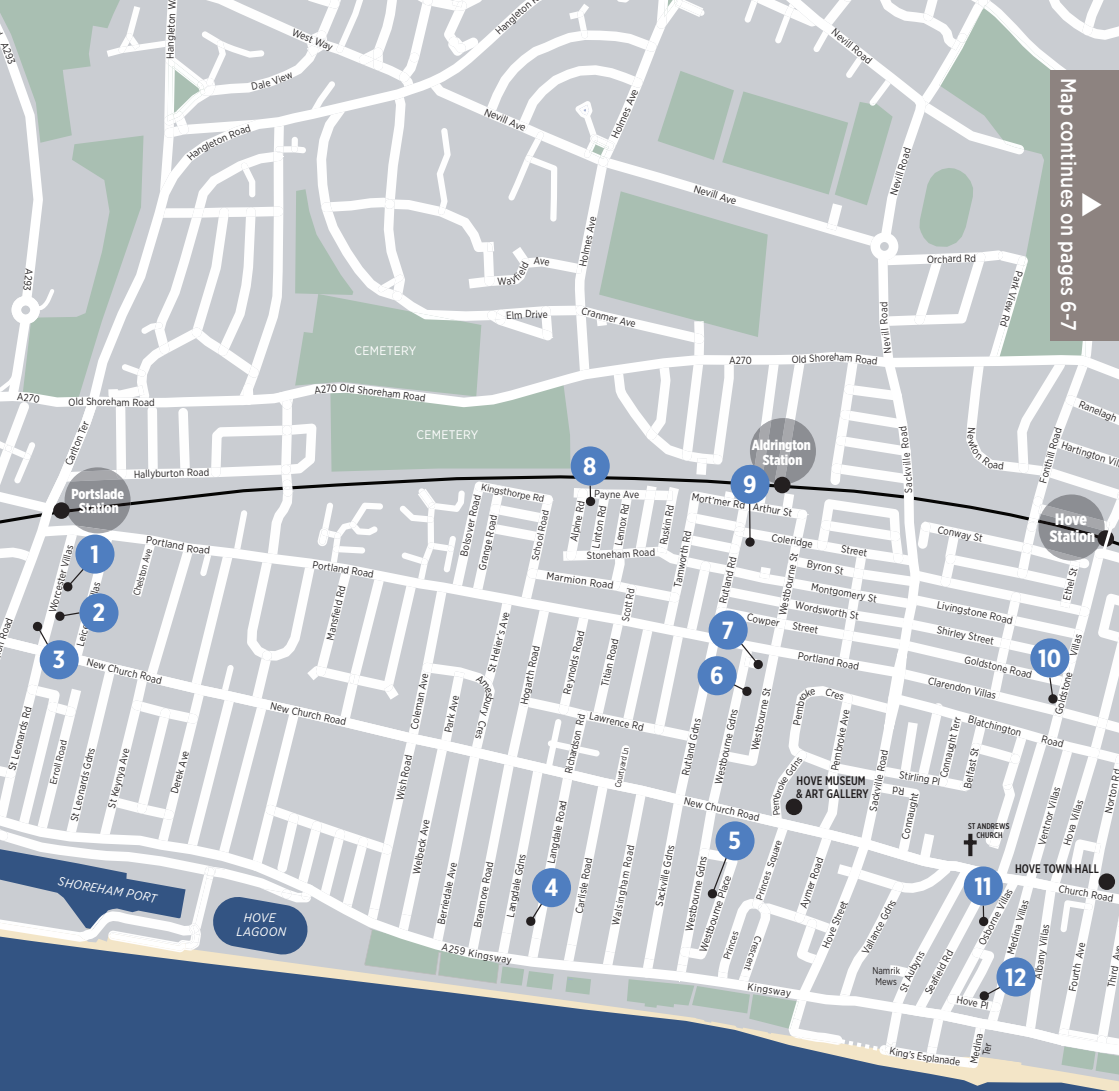
- Refreshments served
- Disabled access
- Easy parking
- Garden open
- Workshops/demonstrations
- Live music
- Card payment facility
- Tap water refill available
- New venue – first year open

## Maps

- Open House venues
- Station
- Landmark building
- Church
- Car Park
- Built up areas
- Park or urban green area
- Rural area
- Water

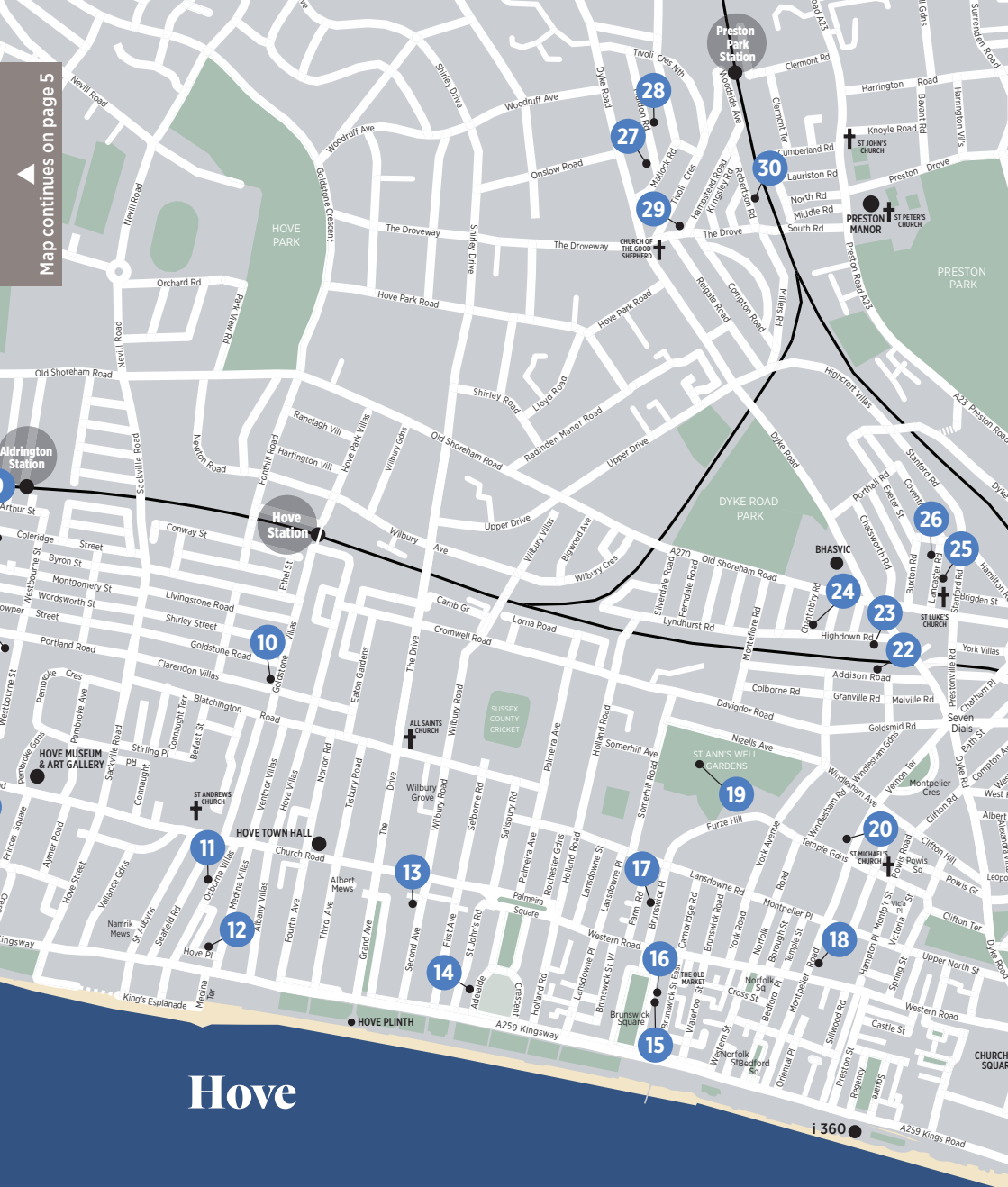
## Access

The majority of houses are ordinary homes and may not have disabled access. Please look at the 'disabled access' section on our website for information on which houses are fully wheelchair accessible.



# Hove

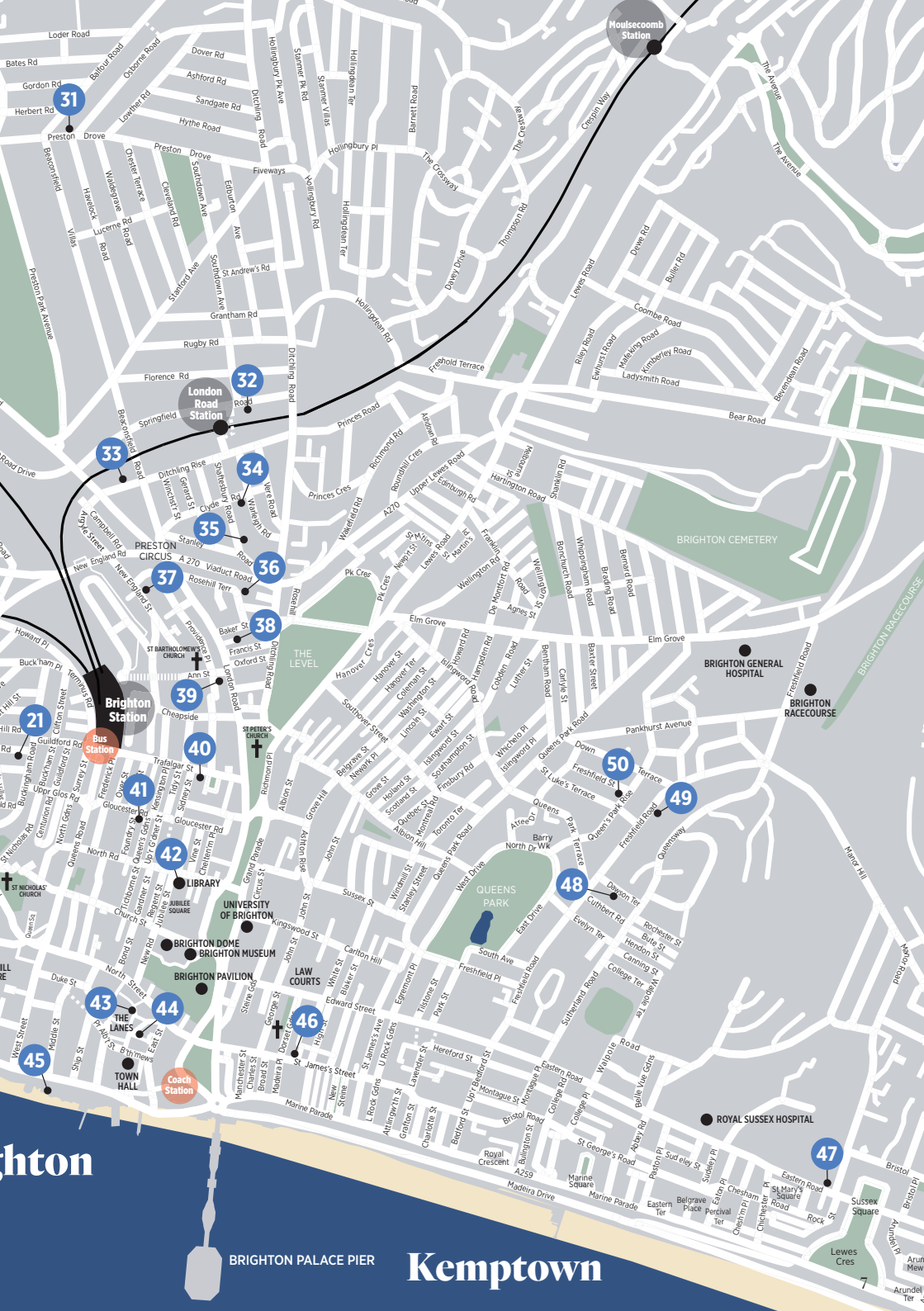




Hove

WEST PIER

Brig



Brighton

BRIGHTON PALACE PIER

Kemptown

## 1 Worcester Sauce

33 Worcester Villas, Hove BN3 5TA

Blackbird, Debbie Forsdyke



A festive treat awaits in our warm and friendly house. Affordable art and original handcrafted Christmas gifts to suit everyone, plus some seasonal surprises. Enjoy mulled wine and homemade cakes too.

07891749555  
w.mcrae1@ntlworld.com  
worcestersauceart on Instagram

### HOUSE



**Wanda McRae** *Sculpture*  
**Gerry Wilmer** *Paintings*  
**Debbie Forsdyke** *Glass*  
**Gillian Hills** *Mosaics*  
**Lara Sparks** *Textiles*  
**Sylvie Howitt** *Papercuts*  
**Anna Cates** *Wood*  
**Claire Nicholson** *Jewellery*  
**Ximena Heasman** *Ceramics*  
**Madame Treacle** *Cards*  
**Ecuweave** *Blankets*  
**Wolfram Lohr** *Leatherwork*  
**Terry Guile** *Jewellery*  
**Beach Pottery** *Ceramics*  
**Glowing Gardens**  
**Driftwood Sculpture**  
**Jo-Anna Rawlings**  
**Felted animals**  
**Madeleine de Angelis**  
*Paintings*  
**Skin Spirit** *Body care*  
**Kathy Laird** *Ceramics*  
**Ella Johanson** *Candles*  
**Susan Cook** *Mixed media*  
**Maison Fay** *Textiles*  
**Amy Burrows** *Linocuts*

11.00-17.00

M	T	W	T	F	S	S
21	22	23	24	25	26	27
28	29	30	1	2	3	4
5	6	7	8	9	10	11

## 2 Art and Indian Tapas

17 Worcester Villas, Hove BN3 5TA

Hester Slater, Gill Copeland



**Gill Copeland** will be holding a 25 year retrospective of her award winning seascape, landscape and travel photography.

**Anita and Sarala** will be running their much loved Indian Tapas Cafe and they will be joined this year by:

**Hannah Thompson** Playful with willow, skilful with paint, creative with jigsaws

**Jane Thompson** A selection box of desirable creatively crafted treats for winter

**Sarah Mayfield** Gifts potted and perfect for foliage fans and leaf lovers.

11am-5pm every weekend  
(cafe closes at 4pm)

07812 403016  
gill@gillcopeland.com  
www.gillcopeland.com

### HOUSE



11.00-17.00

M	T	W	T	F	S	S
21	22	23	24	25	26	27
28	29	30	1	2	3	4
5	6	7	8	9	10	11

## 3 The Round Space Studio

The Round Space Studio, 6 Worcester Villas, Hove BN3 5TB

September Sunset, James Baker



We welcome your visit to The Round Space, a studio designed and built by the artist.

**James Baker** is a carpenter, artist and maker inspired by the landscape. James uses charcoal and watercolour in his paintings. Also for sale are pieces made

from locally sourced branch wood and recycled materials to create lamps, sculptures and rustic furniture.

He will be joined by **Dan Johnson**, metal artist who uses scrap and repurposed steel.

07860 200631  
jamesbakerdesign@gmail.com  
www.jamesbaker.org

### STUDIO-OR-WORKSHOP



11.00-17.00

M	T	W	T	F	S	S
21	22	23	24	25	26	27
28	29	30	1	2	3	4
5	6	7	8	9	10	11

## 4 Encounters

12 Langdale Road, Hove BN3 4HN



Uniquely Exotic Esquirlas

This Christmas, Encounters is dedicated to the art of celebration. We feature an exciting new jewellery collection from **Esquirlas** that features innovative designs that challenge the norms of what jewellery is supposed to be. Esquirlas' pieces

touch sculpture and enable you to appreciate fine but affordable jewellery from a fresh and unexpected perspective. Also, there is Encounters famous Art-Shop with exciting pieces from seven countries that are perfect for art lovers.

07773 171556  
miladysparejo@gmail.com  
www.encountersartspace.com

### HOUSE



10.00-19.00

M	T	W	T	F	S	S
21	22	23	24	25	26	27
28	29	30	1	2	3	4
5	6	7	8	9	10	11



## 5 Studio 28a

28a Westbourne Place, Hove BN3 4GN

A selection of work from our artists



Welcome to our small but perfectly formed studio, crammed with seven fine artists working across watercolour, acrylic and oils. Visit the artists in their spaces and see how their paintings come to life through choices of scale, colour, composition and subject.

There will be a wide range of work for sale, from delicate botanical watercolours through to large scale abstract canvases and, because it's Christmas, we will also have a few seasonal goodies on offer.

07943 891752  
davej\_barker@hotmail.co.uk  
www.instagram.com/artstudio28a/  
**STUDIO-OR-WORKSHOP**



11.00-17.00						
M	T	W	T	F	S	S
21	22	23	24	25	26	27
28	29	30	1	2	3	4
5	6	7	8	9	10	11

## 6 Bluebell Would

45 Westbourne Gardens, Hove BN3 5PN

Yogisat, Bluebell Roebuck



**Bluebell Roebuck** *Photography, fluid art, and handknits*

**Mark Munroe-Preston**  
*Treescapescapes*

**Beachside Kiln** *Glass*

**Polly Marix Evans, Jen Green, Maria Buttiller and Heather Parr**  
*Printmaking*

**VonHoz, Fanny Fielding and Rebecca Lucas** *Painting*

**Kore Sage** *Mixed media*

**Woofing Fabulous and Shona Macdonald** *Ceramics*

**Lulu McQueen, Wild Flora, SweetiePips and Hey Sassy**  
*Jewellery*

**Mr Ink Solo, Isolation Monster and Sander Adamenko**  
*Illustration*

Plus: **Sarah's Doll Parts, Beaubottletops, Wild Jar Terrariums, iHeart Pop Art, Abeille Botanicals, HawkesHounds, The Alchemist's Satchel, Muddy Lotus and Magpize**

07739 477611  
Bluebellwouldopenhouse@gmail.com  
www.instagram.com/bluebellroebuck

**HOUSE**

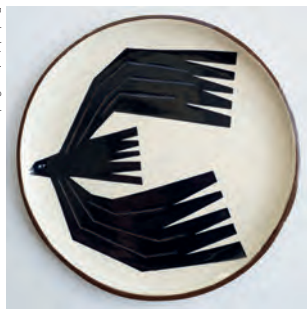


11.00-17.00						
M	T	W	T	F	S	S
21	22	23	24	25	26	27
28	29	30	1	2	3	4
5	6	7	8	9	10	11

## 7 The Studio Gallery

3 Westbourne Grove, Hove BN3 5PJ

Rock plate Lucy Ogden



**Hannah Forward**  
**Georgia Flowers**  
**Joy Fox**  
**Lucy Ogden**  
**Jo Cranston**  
**Sarah Bidwell**  
**Josie Davis**  
**Daisy Jordan**  
**Amanda Doughty**  
**Sarah Jones**  
**Edwin Lock**  
**Sarah Edmonds**  
**Ella Hall**  
**Tiffany Crisp**  
**Anna Soba**  
**Loop Loop**  
**Alison Milner**

Previously at '12 Scott Road', we've opened a new venue just five minutes away.

An array of unique contemporary work by local artists in a modern glass fronted split level studio.

We have prints, ceramics, textiles, jewellery, furniture and more.

07747 462962  
hello@georgiaflowers.co.uk  
www.georgiaflowers.co.uk  
**STUDIO-OR-WORKSHOP**



11.00-17.00						
M	T	W	T	F	S	S
21	22	23	24	25	26	27
28	29	30	1	2	3	4
5	6	7	8	9	10	11

## 8 Villa LVI

56 Payne Avenue, Hove BN3 5HD

Bjorn lampshade Virginia Vincent



**Serena Sussex**  
*Painting*

**Moos Munson**

*Korean Hanji paper craft*

**Virginie Muller**  
*Ceramics*

**Ofelia Gaona-Herrera**  
*Mixed media*

**Robert Wilson**  
*Box art*

**Claire Anstey**  
*Jewellery*

**Kai Nemra**  
*Painting*

**Paper Botanica**  
*Mixed media*

**Virginie Vincent**  
*Mixed media*

Located in the heart of Poet's corner, Villa LVI (56) is a well established Open House with a multicultural team of artists. A wide variety of affordable art is on show, reflecting the group's diverse origins and inspiration.

07813 217142  
vvinie23@gmail.com  
www.instagram.com/Villa.lvi

**HOUSE**

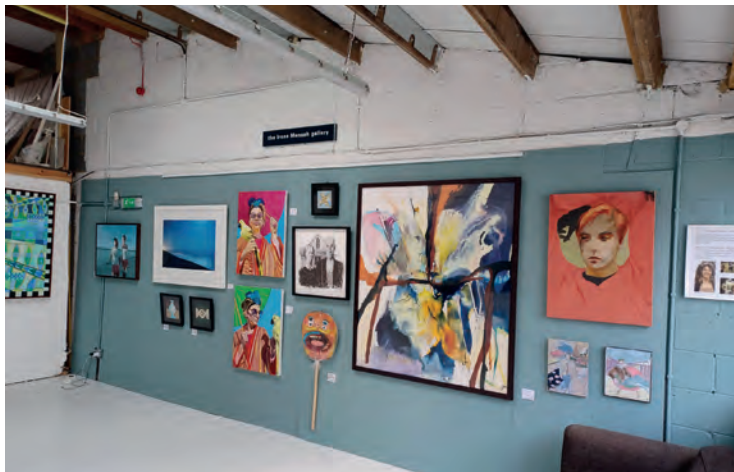


11.00-17.00						
M	T	W	T	F	S	S
21	22	23	24	25	26	27
28	29	30	1	2	3	4
5	6	7	8	9	10	11

## 9 Studio 106

106 Coleridge Street, Hove BN35AA

Gallery View, Studio 106



Come and see the work of ten of the Studio 106 professional artists in a friendly and relaxed environment. We have a curated exhibition of paintings and prints to show you in our gallery and we will also be selling prints and cards. A hidden gem on the West Hove Arts Trail, Studio 106 is a huge converted loft warehouse space, which is home to our gallery as well as our working studio spaces. We look forward to welcoming you.

**Heather Quin** *Mixed media*

**Matt Ward** *Mixed media*

**David Storey** *Painting*

**Carrie Stanley** *Painting*

**James Cowland** *Painting*

**Frances Anderson** *Painting*

**Christina Reading** *Painting*

**Tom Diamantopoulos** *Painting*

**Richard Berner** *Drawing*

**Lucianna Whittle** *Painting*

Someone Said (study), David Storey



Go Lightly, Lucianna Whittle



Belongings, Matt Ward



07530 846130  
studio106@gmail.com  
www.studio106.co.uk  
STUDIO-OR-WORKSHOP



11.00-17.00

M	T	W	T	F	S	S
21	22	23	24	25	26	27
28	29	30	1	2	3	4
5	6	7	8	9	10	11

## 10 Dion Salvador Lloyd

18 Goldstone Villas, Hove BN3 3RQ

Winter Open House 2021; Photo: SJ Gajda



Brighton born established artist Dion Salvador Lloyd warmly welcomes you to his sunny Victorian home. Exhibiting new contemporary abstract sea and landscape paintings, works on paper and new botanical works inspired from in and around the South Downs as well as the Sussex coastlines. Limited edition signed prints will also be available to view.

Recent achievements include:  
Both paintings selected for Royal Academy of Arts Summer Exhibition 2022  
Represented by galleries in London and the UK  
Winner Best Open House Award 2015  
Commissions undertaken  
Open by appointment at other times and days

Comments from Open House visitors book:

*'Blown away by your wonderful paintings'*  
*'Stunning as always - I love what this art evokes'*  
*'By far our favourite open house & work so far - Brilliant'*  
*'The light shines through your paintings'*  
*'Standout artist from today - So ethereal thank you'*  
*'How inspiring to see such painterly work'*

07718 450745

info@dionsalvador.co.uk  
www.dionsalvadorlloyd.com

HOUSE



10.00-18.00

M	T	W	T	F	S	S
21	22	23	24	25	26	27
28	29	30	1	2	3	4
5	6	7	8	9	10	11

## 11 David Streeter & Friends

54 Osborne Villas, Hove BN3 2RB

HoHoHove Greeting Card; David Streeter



2022 AOH 'Photographer of the Year' runner up, David Streeter warmly welcomes you to a stunning collection featuring 12 local artists and makers, beautifully curated over two floors, with festive treats on offer!

**David Streeter** Photography

**Nicole Urbanski** Textiles

**Julian Warrender**

*Precious metal jewellery*

**Adele Scantlebury**

*Woodblock prints*

**Nina Newman** Ceramics

**Artshed Brighton**

*Eco-friendly gifts*

**Cleo Gabriel** Earth botanicals

**Louise Erskine** Painting

**Tezel Bahcheli** Sculpture

**Em Erskine** Textiles

**Lucy Palmer**

*Preserves and decorations*

07803 743782

davidjohnstreeter@gmail.com

www.instagram.com/davidstreeterandfriends/

HOUSE



11.00-17.30

M	T	W	T	F	S	S
21	22	23	24	25	26	27
28	29	30	1	2	3	4
5	6	7	8	9	10	11

## 12 Paul Houlton Studio

6 Hove Place, Hove BN3 2RG



A second chance to view many of the paintings, drawings and prints previously exhibited earlier this year in May, with several new works never shown before in Paul's amazing studio in a former chapel.

The artist's work encompasses a broad range of styles and influences from the 20th century, including Picasso, Vorticism and Japan, with affordable fine art prints and greeting cards for sale in addition to some original works.

01273 733666

mail@paulhoulton.art

www.paulhoulton.art

STUDIO-OR-WORKSHOP



11.00-17.00

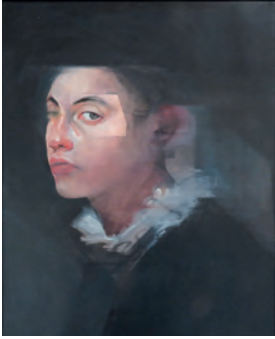
M	T	W	T	F	S	S
21	22	23	24	25	26	27
28	29	30	1	2	3	4
5	6	7	8	9	10	11



## 13 Cameron Contemporary Art

1 Victoria Grove, Second Avenue, Brighton and Hove BN3 2LJ

Facet 7: Felicity Gill



Artist include:  
**Rowena Gilbert**  
 Ceramic  
**Dean Patman**  
 Sculpture  
**David Storey**  
 Painting  
**Victoria Graimes**  
 Painting  
**Mark Johnston**  
 Painting  
**Kevin Hendley**  
 Painting  
**Felicity Gill**  
 Painting  
**Victoria Kiff**  
 Painting  
**Kirsty Wither**  
 Painting

Cameron Contemporary Art is an award winning independent art gallery. We exhibit paintings, prints, ceramics and sculpture in a regularly changing exhibition programme. The gallery also attends several UK and international Art Fairs each year.

07752 380088

info@cameroncontemporary.com  
 www.cameroncontemporary.com

GALLERY



Sa-Su 11.00-17.00, We-Fr 10.30-17.00

M	T	W	T	F	S	S
21	22	23	24	25	26	27
28	29	30	1	2	3	4
5	6	7	8	9	10	11
12	13	14	15	16	17	18

## 14 Clara Wilkinson

Flat 1, 33 Adelaide Crescent, Hove BN3 2JJ

Riotous reds: Clara Wilkinson



**Clara Wilkinson** is opening her Regency home and studio for her second winter festival this December.

She will be open for two weekends only, exhibiting a new group of

botanical inspired watercolours as well as some larger oil paintings, beautifully printed cards and her popular giclee prints.

clara@clarawilkinsonart.com  
 www.clarawilkinsonart.com  
 www.clarawilkinsonart.com

HOUSE



12.00-17.00

M	T	W	T	F	S	S
21	22	23	24	25	26	27
28	29	30	1	2	3	4
5	6	7	8	9	10	11

## 15 Alejez Artist Residence

Flat 5, 16 Brunswick Square, Hove BN3 1EH



Through the Arch of the Brighton Bandstand towards the Remains of the West Pier. Orient. Nights Alejez

For the first time, artist **alejez** welcomes visitors to his home in historic Brunswick Square to see a variety of new work: panoramic prints of Sussex landscapes, the stunning beauty of the South Downs and mesmerising coastal scenes. Works that depict rich

architectural heritage Brighton, the West Pier and Brighton Pavilion. And new work that expresses his interest in conservation of the colourful flora and fauna of the British countryside. Love life, love art!

07946 381116

alejezart@gmail.com  
 alejez.com/

HOUSE



11.00-17.00

M	T	W	T	F	S	S
21	22	23	24	25	26	27
28	29	30	1	2	3	4
5	6	7	8	9	10	11

## 16 21a Brunswick Square

21a Brunswick Square, Hove BN3 1EJ

Relax, it's Christmas: Stoats & Weasels



Our artists and makers:  
**Stoats & Weasels**  
**Hello Dodo**  
**Anna's Drawing Room**  
**Laura Danby**  
**Sarah Edmonds**  
**Hello Terry**  
**Alex Bamford**  
**We Are Mountain**  
**Andrea Gregory**  
**From Brighton**  
**With Love**  
**GRD Designs**  
 Refreshments available.

Modern, bright, stylish designs for the wall, body and home. Plenty of designs to raise a smile too. Our work covers affordable illustration, jewellery, clothing, homewares, photography,

textiles, printmaking, decorations, plus lots of gift items, stocking fillers and greeting cards. Shop local this Christmas!

01273 720685

lisa@stoatsandweasels.com  
 www.21abrunswicksquare.com/

HOUSE



11.00-17.00

M	T	W	T	F	S	S
21	22	23	24	25	26	27
28	29	30	1	2	3	4
5	6	7	8	9	10	11

## 17 Matt Henry Photography

Flat 2, 37 Brunswick Place, Hove BN3 1ND

The Trip #4 (2005), Matt Henry



### Matt Henry Photography

Matt Henry (b. 1978) makes fictional narratives using a sequence of photographs. The series (some loose, some linear) have been described as 'stills from an imaginary film', and

explore a fascination with the politics and culture of the mid-century era, with one eye on the present day. He is internationally exhibited, is featured in over 80 publications, and has work in museum and private collections.

07546 580577

[matt@matthhenryphoto.com](mailto:matt@matthhenryphoto.com)  
[www.matthhenryphoto.com](http://www.matthhenryphoto.com)

HOUSE



10.00-17.00

M	T	W	T	F	S	S
21	22	23	24	25	26	27
28	29	30	1	2	3	4
5	6	7	8	9	10	11

## 18 92 Montpelier Road

92 Montpelier Road, Brighton BN1 3BE



Autumn Walk Chalk Paint (detail), Tiffany Lynch

Affordable Christmas shopping direct from local artists. Open one weekend only.

**Paula Kirkwood** *Leather*  
**Virginie King** *Lampshades*  
**Ellie Seymour** *Books*  
**Sylvia Liszak** *Textiles*  
**Digne Zalkovska** *Mixed media*  
**Diana Djohan** *Indonesian treats*  
**John Loader** *Turned wood*  
**Ruth Mullan** *Glass*

07526 875580

[risza.lopezdacruz@gmail.com](mailto:risza.lopezdacruz@gmail.com)  
[@92montpelierroad](http://@92montpelierroad)

HOUSE



10.00-18.00

M	T	W	T	F	S	S
21	22	23	24	25	26	27
28	29	30	1	2	3	4
5	6	7	8	9	10	11

## 19 St Ann's Well Gardens Xmas AOH

St Ann's Well Gardens, Somerhill Road, Hove BN3 1RP

Mina Moocrie



Three days of artists and crafters exhibiting their work, in our festive marquee in the beautiful St Ann's Well Gardens. Browse our many different stalls whilst enjoying live music, mulled wine and mince pies. 40+ artists selling an eclectic mix of art

and crafts, plus refreshments from The Garden Café and live entertainment all weekend plus our resident Santa for the kids. The festivities begin with our launch on Friday 9th December, 5-9pm

### Alison Hopkins

*Botanical jewellery*  
**Amalia Sanchez de la Blanca** *Architectural portraits*  
**Bianca Williams** *Designer homeware*  
**Cassandra Whitfield** *Painting*  
**Charlotte Jouan** *Jewellery*  
**Claire Graves** *Textiles*  
**Colin Irvine** *Decorative wooden boxes*  
**David O'Hare** *Textiles and decorations*  
**Dorota Biniecka** *Giclee prints*  
**Emma Shotton** *Soap and Xmas gifts*  
**Gail Anderson** *Ceramics*  
**Harriot Blanchard** *Izzie*  
*Botanical jewellery, cards and art*  
**Jared Orlin**  
**Jenny Turtill** *Jewellery*

### Karen Rao

*Hats*  
**Katja Lelic** *inkykatstudio*  
**Kristin Watt-Bonar** *Sculpture*  
**Laura Marie Nixey**  
**Lili Toth** *Jewellery*  
**Louisa Kazig** *Prints and stationary*  
**Lulu McQueen** *Jewellery*  
**Lynda Eco** *jewellery*  
**Melanie Howard** *Cat design textiles and gifts*  
**Nina Moocrie** *Textiles and pictures*  
**Peter Baker** *Prints*  
**Rachel Chitty** *Crystals and jewellery, incense burners*  
**Rowena Park** *Jewellery*  
**Sally Evans** *Textiles*  
**Saya McNairn-Yanagi** *Ceramics*  
**Tracy-Ann** *Linen toys*  
**Val Mager**

07917 402652

[natalie@fosawg.org](mailto:natalie@fosawg.org)  
[www.friendsofstannswellgardens.org/](http://www.friendsofstannswellgardens.org/)  
**COMMUNITY**



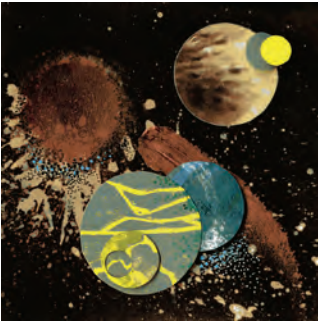
Fr 17.00-21.00, Sa-Su 11.00-17.00

M	T	W	T	F	S	S
21	22	23	24	25	26	27
28	29	30	1	2	3	4
5	6	7	8	9	10	11

## 20 Temple Group

Brighton Girls School GDST, Temple Building,  
Montpelier Road, Brighton BN1 3AT

Universe Will: Tiffany Crisp



Brighton Girls' School exhibits six artists in the newly refurbished Temple building with loads of Christmas goodies and fine art originals to buy. Work for sale includes painting, drawing, illustration, print, macrame, mix media collage and more.

07813 169811  
tiffany.crisp@hotmail.com  
instagram.com/temple\_ah\_2022  
**EDUCATIONAL INSTITUTION**



We look forward to welcoming you.

**Tiffany Crisp**  
**Annabel Porter**  
**Kirsten Taylor**  
**Jo Moore**  
**Jemma Day**  
**Jo Perkins**

11.00-17.00

M	T	W	T	F	S	S
21	22	23	24	25	26	27
28	29	30	1	2	3	4
5	6	7	8	9	10	11

## 21 The Albert Road House

Flat 2, First Floor, 24 Albert Road, Brighton BN1 3RN



Oiseau: Mathias Hermann Löffler

Mathias is an Austrian actor and artist. His work focuses on prints and mono-prints, depicting objects, animals and plants, created with acrylic and oil colours in combination

with printing ink. In this debut exhibition a selected group of work will be displayed to the public.

09.00-17.30

07478 685536  
ms.h.loeffler@gmail.com  
loeffms01.wixsite.com/mathias-h-loeffler  
**HOUSE**

M	T	W	T	F	S	S
21	22	23	24	25	26	27
28	29	30	1	2	3	4
5	6	7	8	9	10	11
12	13	14	15	16	17	18

## 22 BouSham At Home

13 Addison Road, Hove BN3 1TQ

BouSham At Home: BouSham Gallery Ltd



**Shyama Ruffell**  
*Painting prints and cards*  
**Clair Boubli**  
*Jewellery and art glass*  
**Colin Ruffell**  
*Painting prints and cards*  
**Fran Slade**  
*Painting prints and cards*  
**Josie Davis**  
*Raku ceramic animals*  
**Be Natural Candles**  
*Home fragrances*  
**BouSham**  
*Vintage collectables*  
**Gabriele Ghiani**  
*Terracotta sculpture*  
**Robyn Nield**  
*Bronze sculpture*  
**Guy Holder**  
*Ceramic birds*  
**Alex Hollingworth**  
*Ceramics vessels*  
**Siobhan Fitzgerald**  
*Edible gifts*

Relaxed Christmas shopping from established local artists – there's something here for everyone.

07979 837677  
shyamaruffell@me.com  
www.shyamaruffell.co.uk  
**HOUSE**



M	T	W	T	F	S	S
21	22	23	24	25	26	27
28	29	30	1	2	3	4
5	6	7	8	9	10	11

## 23 Art On the Line

10 Highdown Road, Hove BN3 6EE



Art on the Line Interior: Kate Strachan

Art On the Line, near the 7Dials, has a vibrant mix of established local artists including paintings, prints, ceramics, jewellery, textiles and wood, along with beautiful hand made gifts, cards and books. Expect a warm welcome and affordable, original art away from the high street.

**Kate Strachan**  
*Painting, prints and textiles*  
**Emma Stanton Jewellery**  
**Cassia Beck** *Prints and cards*  
**Tom Lee Photography**  
**Hawkswell Wood**  
**Ossian handmade** *Knitwear*  
**Juliet Walters** *Ceramics*  
**Emily Jolley** *Paintings and cards*

07816 660891  
katestrachan@mac.com  
www.katestrachandesign.com  
**HOUSE**



M	T	W	T	F	S	S
21	22	23	24	25	26	27
28	29	30	1	2	3	4
5	6	7	8	9	10	11



## 24 Salon des Sources

4 Chanctonbury Road, Hove BN3 6EL

Portrait: Porcelain Serving Plate: Jaq Buckeridge



*Ceramics and mosaics:*

Anna Tilson  
Jaq Buckeridge  
Angela Evans  
Dulse Ceramics  
Barbara Butterworth  
Carol Thompson  
Yolande Sheppard-Walters

*Textiles:*

Halinka Fairies  
Susan Kennewell  
Atelier Bricolage  
Helen Dunman  
Melanie Hodge

*Drawing and painting:*

Geraldine Guest  
Pru Heath

*Jewellery:*

Sarah Packington  
Fiona Hutchinson  
Wild Blooms  
Zincy Designs

*Cards and paper:*

Madame Treacle

01273 880385

jaqcards@ntlworld.com

www.Facebook.com/SalondesSources

HOUSE



	M	T	W	T	F	S	S
21	22	23	24	25	26	27	
28	29	30	1	2	3	4	
5	6	7	8	9	10	11	

11.00-17.00

## 25 No. 14

14 Lancaster Road, Brighton BN1 5DG

Doug McLean



Open for the first time,  
presenting several series of  
photographic artworks

07968 783712

doug@dougmclean.co.uk

www.dougmclean.co.uk

HOUSE

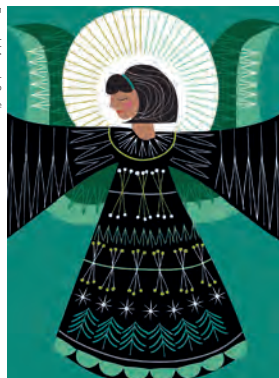
	M	T	W	T	F	S	S
21	22	23	24	25	26	27	
28	29	30	1	2	3	4	
5	6	7	8	9	10	11	

10.00-17.00

## 26 Northern Lights

29 Lancaster Rd, Brighton BN1 5DG

Emmed Angen Scofinn



**Scofinn**

*Textiles, prints,  
homeware and cards*

**Holly M Atelier**

*Bags and purses*

**Anette Gidlöf**

*Contemporary  
concrete vases and  
candleholders*

**Julie Ingham**

*Coastal prints*

**Martine Jans**

*Silver and gold  
jewellery*

**Kathie Murphy**

*Resin vases*

**Lucky Stitch**

*Knitted felted textiles*

**Annabet Wyndham**

*Enamel and silver  
jewellery*

We are a Nordic style home a short  
walk from Seven Dials and Brighton  
station. Come and embrace the  
festive season with our affordable  
art, Xmas gifts and baked treats  
including our popular cinnamon buns.

07884 000436

scofinn@yahoo.com

www.instagram.com/northernlightsopenhouse/

HOUSE



	M	T	W	T	F	S	S
21	22	23	24	25	26	27	
28	29	30	1	2	3	4	
5	6	7	8	9	10	11	

11.00-17.00

## 27 For The Man I Love

13 Maldon Road, Brighton BN1 5BD

For the Man I Love



**Jay Chutneys**

*Lucy Candles*

**Mr Massey**

*Grooming products*

**Emma Cat products**

*Simon Illustration*

**Roger Turned wood**

*Phil Christmas jumpers*

**Marion**

*Wreathes and plants*

**Marion Glass**

*Chris Ceramics*

**Lizzie Textile art**

*Linescapes*

*Illustration*

**Sally Mixed media**

*Lauren Illustration*

**Mr Beaujangles**

*Jewellery*

A warm welcome to our Open  
House, previously voted in the top  
ten and one of the friendliest you  
will find. Featuring a huge selection  
of affordable gifts and art for  
everyone. A complimentary spiced  
cider on arrival to warm you up.

07736 656049

orders@beaujangles.com

www.forthemanilove.com

HOUSE



	M	T	W	T	F	S	S
21	22	23	24	25	26	27	
28	29	30	1	2	3	4	
5	6	7	8	9	10	11	

11.00-17.00

# 28 The Trojan House

26 Maldon Road, Brighton BN1 5BE

Pug Santa Christmas Card, Troy Ohlson



For 20 years the popular, friendly Trojan House has been exhibiting lovely handmade gifts and unique presents in a relaxed home setting – and there's work by two of the top four May 2022 AOH Artist of the Year finalists!

Enjoy a warm welcome and a complimentary glass of Pete's delicious mulled wine while browsing creations by your favourite artists and makers.

Peek into resident artist Troy's little glass roofed painting studio where the magic and the splashes happen.

**Troy Ohlson** Collages, paintings, prints and cards

**Copper Creatures** Hammered and twisted copper sculpture

**Treasures by Troy** Hand crochet silver and gem jewellery

**Jewel Flowers** Everlasting flower sculptures

**Wild Wonder Ceramics** Animal sculptures

**Primordial Soup** Art sock creatures

**J David Bennett** Colourful pop prints

**Inspired by the Sea** Needle felting

**Belinda** Textiles

**Chapman's Aromatics** Essential oil delights

**Tema Jane** Travels and truths

**Glass Follies** Stained glass

**Hoarder and Maker** Hand-stamped cutlery

**Ceramic Vessels** Hand-thrown drip glazed

**Big Bad Brighton Bear** T-shirts

Free parking on weekends

Cotton Tea Towels, Troy Ohlson



Hand Crochet Silver & Gem Jewellery



Love Birds, Copper Sculpture



07885 911049  
troyohlsonart@gmail.com  
www.trojanhouse.com

HOUSE



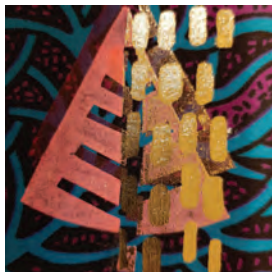
11.00-17.00

M	T	W	T	F	S	S
21	22	23	24	25	26	27
28	29	30	1	2	3	4
5	6	7	8	9	10	11

## 29 The GloohBaah House

22a The Drove, Brighton BN1 5AF

Christmas Tree: Rosaline Lymer



Xmas 22@22a The Drove. See The GloohBaah House in fine festive form face-2-face again at last!

**Sandy Reeves Walsh Jewellery**  
**Ros Lymer**

*Painting, mixed media and textile art*

**Soreh Levy** *Wabisabi ceramics*

**Ali Sivyour** *Wirework*

**Toby & Jo Cooper**

*Wood, metal and plastic work*

07852 131971

sandy@jewellerygloohbaah.co.uk

www.jewellerygloohbaah.co.uk/

HOUSE



**Nevine Fathy** *Oil painting*

**Chris Hill**

*Painting, fishing boat*

*construction and Christmas gifts*

**Lilli Toth**

*Ceramic jewellery and ornaments*

**Catherine Anna Benson**

*Engraved glass and seashell*

*jewellery*

**Felty Jacs** *Felted gifts*

11.00-16.00

M	T	W	T	F	S	S
21	22	23	24	25	26	27
28	29	30	1	2	3	4
5	6	7	8	9	10	11

## 30 Robertson Yard Studios

Robertson Yard, 42A Robertson Road, Brighton BN1 5NJ



Built on the site of a derelict Victorian Soft Water Laundry, Robertson Yard Studios is home to 15 arts and crafts practitioners. One minute walk from Preston Park Station in Brighton, current disciplines include metalwork, glass-blowing, violin restoration, illustration, painting, jewellery, lapidary, electronic music 'gadgets', comic book workshops, and ceramics.

07793 321039

jon@metajon.com

www.robertsonyard.co.uk/

STUDIO-OR-WORKSHOP



**Jon Mills** *Metal work*

**Romud (Ros Poerwantoro)**  
*Ceramics*

**Nina Garstang** *Painting*

**Vivienne Ridley** *Jewellery*

**Sanni Falkenberg**

*Gem stone artist*

**Bea Odd Creations** *Taxidermy*

**Kate Osborne** *Painting*

One weekend only: Saturday 3rd  
- Sunday 4th December.

11.00-17.00

M	T	W	T	F	S	S
21	22	23	24	25	26	27
28	29	30	1	2	3	4
5	6	7	8	9	10	11

## 31 The Nature House

113 Preston Drove, Brighton BN1 6EW

Still Shapes: Ellie Hipkin



**Ellie Hipkin**

*Textile mixed media art*

**Sarah Rickard**

*Ceramics*

**Chris Murphy**

*Ceramics*

**Botanical Expressions**

*Glass*

**Jan Irvine**

*Jewellery*

**Vannucchi**

*Jewellery*

**Lugna Home**

*Fragrance*

*Home scents*

**Being & Bloom**

*Christmas wreaths*

**Rachel Rogers**

*Textile homewares*

Welcome to The Nature House! We are delighted to be opening this Christmas with a selection of nature inspired work, through organic form, local landscapes and textures. In the garden studio there will be fun and creative workshops to book.

07803 000901

hello@elliehipkinart.com

elliehipkinart.com/

HOUSE



11.00-17.00

M	T	W	T	F	S	S
21	22	23	24	25	26	27
28	29	30	1	2	3	4
5	6	7	8	9	10	11

## 32 Easy Tiger

158 Springfield Road, Brighton BN1 6DG

KEO ART



New Open House reflecting elements of dark glamour with an alternative twist. Beautiful collection of art work as well as knitwear, jewellery, candles, vegan skincare, plants and much more. Of course, lots of tigers too.

07765 937193

easytigeraoh@gmail.com

www.instagram.com/easytigerbrighton

HOUSE



**Desertland Wares**

*Textiles*

**Glass Art Werks**

*Stained glass*

**Pippa Toole** *Illustration*

**KEO ART** *Painting*

**Georgia Foxglove**

*Print making*

**Silver Spur Jewellery**

**PorkChops** *Paper-cuts*

**Hummingbird**

**Hawkmoth** *Jewellery*

**Earth Botanicals**

*Soaps*

**A Botanical Grimoire**

*Apothecary*

**Simoons Studio**

*Print making*

**Tinka-inc** *Mosaics*

**Bucko by Bobble**

*Textiles*

**Mister Puca** *Illustration*

**Artisan Candles**

**Tamsi Art** *Painting*

**Hi Cacti** *Homewares*

11.00-17.00

M	T	W	T	F	S	S
21	22	23	24	25	26	27
28	29	30	1	2	3	4
5	6	7	8	9	10	11



### 33 Glass In Fusion

Unit 9 Beaconsfield Studios, 25 Ditchling Rise, Brighton BN1 4QL



Brighton Pavilion in Green and Gold - Stephanie Else/Glass in Fusion

A fabulous glass studio showcasing an array of vibrantly beautiful glass artworks, gifts and jewellery. On display will be award-winning glass panels and iconic *Brighton In Glass* framed tiles, as well as stunning enamel compositions.

07887 975818  
stephanie@glassinfusion.co.uk  
www.glassinfusion.co.uk

**STUDIO-OR-WORKSHOP**



Fantastic gift ideas for everyone including shimmering glass snowflakes and festive trinkets. Come and be bedazzled!

**Stephanie Else**  
Glass

**Romi Shadler Reingold**  
Enamel compositions

11.00-17.00

M	T	W	T	F	S	S
21	22	23	24	25	26	27
28	29	30	1	2	3	4
5	6	7	8	9	10	11

### 34 Milton House

72 Clyde Road, Brighton BN1 4NP



Palace Pier Print and Power Mugs: Sarah Jones and Ken Eardley

Back with a fabulous set of makers for this Christmas, come and say hello!

**Sarah Jones** Prints

**Julian Warrender** Jewellery

**Lulu McQueen** Jewellery

**Sal Goodyer**

Printed leather and textiles

**Stacey Mancer-Knight** Ceramics

**Madame Treacle** Cards and gifts

**Chalk & Flint Ceramics** Ceramics

**Plaent Werks** Skin products

**Katie Brinsley** Ceramics

**Ken Eardley** Ceramics

**Anna Tilson** Mosaics

**Jennie Jackson**

Screenprinted textiles

07815 208755  
sarahjonesprints@gmail.com  
@miltonhousebrighton

**HOUSE**



11.00-17.00

M	T	W	T	F	S	S
21	22	23	24	25	26	27
28	29	30	1	2	3	4
5	6	7	8	9	10	11

### 35 The Shaftesbury Collective

28 Shaftesbury Road, Brighton BN1 4NF

Sea View: Lucy Cooper



**Lucy Cooper**  
Screenprints,  
photographic prints  
and cards

**Hattie Gordon**  
Paintings, prints  
and cards

**Yolande Beer**  
Ceramics

**Pinki Jones**  
Textiles, prints  
and jewellery

**Julie Sellars**  
Garden sculpture

**Jenny Turtill**  
Dramatic jewellery

The Shaftesbury Collective is back this Christmas with an exciting new line-up of artists and makers! Open for just the two weekends in December, we'll be showing a wide range of art to suit all budgets and tastes.

**Open two weekends  
only: 3rd-4th and  
10th-11th December**

07775 897628  
lucycooper20@gmail.com  
www.instagram.com/the\_shaftesbury\_collective/

**HOUSE**



11.00-17.00

M	T	W	T	F	S	S
21	22	23	24	25	26	27
28	29	30	1	2	3	4
5	6	7	8	9	10	11

### 36 Rose Hill Rebels

Rose Hill Court, Rose Hill Terrace, Brighton BN1 4HS



Rose Hill: Lanie

This exhibition features work created by a collective of artists who live at Rose Hill Court Seniors Housing.

**John** Mixed media

**Joe** Mixed media

**Lanie** Photography

rosehillrebels@gmail.com  
www.facebook.com/warthogroses/

**HOUSE**



12.00-16.00

M	T	W	T	F	S	S
21	22	23	24	25	26	27
28	29	30	1	2	3	4
5	6	7	8	9	10	11



## 37 New England House Open Studios

New England House, New England Street, Brighton BN1 4GH

New England House resident artists and makers, together with selected guest exhibitors, invite you to their vibrant and creative studios for a three-day event:

**Friday 9th – Sunday 11th December**

The exhibitions runs over several floors and studios in this large industrial building, home to many Brighton artists.

You will find ceramics, jewellery, prints, paintings, screen prints, etchings, wood cuts, stationary, bags, cups, plates, vases, towels, crochet mushrooms (really!) and much more. Add the spice of originality to your Christmas at New England House. Come and browse the wonderful gifts and works on offer, and take advantage of some very special studio sales. A unique experience!

Birds on the train, vases, Ken Endrey



Ring, Anette Guller



Strawberry Earrings: Francesca Cluney



Wedge, Lancelot Richardson

07962 615445  
info@nehopenstudios.org.uk  
nehopenstudios.org.uk

**STUDIO-OR-WORKSHOP**



11.00-18.00

M	T	W	T	F	S	S
21	22	23	24	25	26	27
28	29	30	1	2	3	4
5	6	7	8	9	10	11

## 38 Grace Eyre Artists

Grace Eyre Art Studio, Unit 2 Open Market,  
Marshall's Row, Brighton BN1 4JU

Christmas Card: Teresa Wood



Pop along to our Art Studio in the open market to see a selection of our talented artists' work. All the work in the exhibition is made by artists with learning disabilities and/or autism.

Our Christmas show will combine recent work in painting, collage and drawing, along with aspects of our autumn Garden Mosaics and the GE Collective On Nature exhibitions.

07848 456103  
ewillcocks@grace-eyre.org  
www.grace-eyre.org/

HOUSE



11.00-16.00

M	T	W	T	F	S	S
21	22	23	24	25	26	27
28	29	30	1	2	3	4
5	6	7	8	9	10	11

## 40 LUMINATE

13 Trafalgar Street, Brighton BN1 4EQ

HALL: James Coward



Five very different artists come together to light up the winter darkness with paintings, collages, photographs, assemblages, and prints. Framed and unframed work, greeting cards, gifts, and merchandise are all available. Sold work can be taken away at the time of sale.

**Emma de Polnay**  
Mixed media painter

**Maxine Allan**  
Mixed media collage and assemblage

**Frances Anderson**  
Watercolour artist

**James Coward**  
Oil painter and fine artist

**Claire Richards**  
Photography

10.00-18.00

M	T	W	T	F	S	S
21	22	23	24	25	26	27
28	29	30	1	2	3	4
5	6	7	8	9	10	11
12	13	14	15	16	17	18

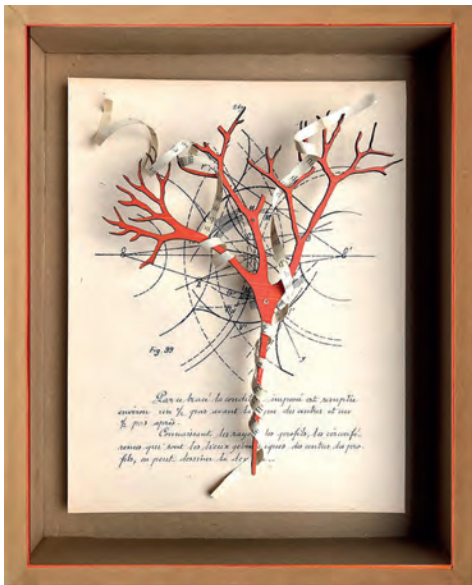
07970 206286  
emmadepolnay@mac.com  
emmadepolnay.com/luminate-group-show/  
GALLERY



## 39 Atelier 51

Atelier, 51 Providence Place, Brighton BN1 4GE

Glazed Tree: Frances Bloomfield



Ceramic serveware: Silvia K

Atelier 51 is located in a Victorian warehouse by the magnificent St. Bartholomew's Church, behind the London Road in Brighton. Artist Rhoda K Baker and ceramicist Silvia K are opening both their studios with two eclectic shows from professional artists and makers. On show will be a variety of truly unique beautiful works in all sorts of media.... an absolute visual treat!

**Rhoda K Baker** Mixed media  
**Silvia K** Ceramics  
**Melver Design** Lighting  
**Jo Cranston** Textiles  
**Frances Bloomfield** Mixed media  
**Ana Bernau** Textiles  
**Christina Fedyk** Painting  
**Mara Vera** Textiles

11.00-17.00

M	T	W	T	F	S	S
21	22	23	24	25	26	27
28	29	30	1	2	3	4
5	6	7	8	9	10	11

STUDIO-OR-WORKSHOP



## 41 Nick Gardner & Co at Gallery40

Gallery 40, 40 Gloucester Rd, Brighton BN1 4AQ

Out Score: Nick Gardner



**Thea Thompson** *Ceramics*  
**Rebecca Angel** *Mixed media*  
**Nick Gardner** *Painting*

Gallery 40 and BOH bring together three contrasting artists for this exciting show. Painter **Nick Gardner**, who hosts Art at Art at 21 in the Summer Brighton Artists Open Houses is joined by innovative ceramicist **Thea Thompson** renown for her landscape inspired handbuilt clay vessels and print designer **Rebecca Angel** who's work spans textiles, mural and collage who will be exhibiting new abstract colour works.

**Thursday 8th – Sunday 11th December**

07527 447308  
 nick.gardner100@gmail.com  
 Nickgardnerart.com

GALLERY



11.00-18.00

M	T	W	T	F	S	S
21	22	23	24	25	26	27
28	29	30	1	2	3	4
5	6	7	8	9	10	11

## 42 St. John's College

Jubilee Library, Jubilee Street, Brighton BN1 1GE



Jessica Gleason

St. John's College in Kempdown is a specialist further education college for young people (19-25 years), many of whom are autistic and/or have learning disabilities. Many of our young

people are very gifted artistically and creatively and we are very excited to be able to share their work with Brighton Artists Open Houses this autumn at the Jubilee Library.

01273 244000  
 reception@st-johns.co.uk  
 www.st-johns.co.uk

COMMUNITY



09.30-17.00

M	T	W	T	F	S	S
21	22	23	24	25	26	27
28	29	30	1	2	3	4
5	6	7	8	9	10	11

## 43 BouSham Gallery

14 Hanningtons Lane, Brighton BN1 1GS

BouSham Gallery Selection: Clair and Shymmy



BouSham Gallery presents this year's Christmas collection, showcasing our exceptional local artists and makers.

Also featuring giant magical wings flying through our Christmas windows.

07503 401905  
 clairboubli@yahoo.com  
 @boushamgallery

GALLERY



**Clair Boubli**  
 Bou jewellery and art glass  
**Shyama Ruffell** *Paintings, prints, cards and homeware*  
**BouSham** *Vintage collectable animals and ceramics*  
**Colin Ruffell**  
*Paintings, prints and cards*  
**Fran Slade**  
*Paintings, prints and cards*  
**Belle Boubli** *Resin jewellery*  
**Mifawny Stringer** *Print making*  
**Alex Hollingworth**  
*Ceramic vessels*  
**Gabriele Ghiani** *Terracotta busts*  
**Robyn Nield** *Bronze sculpture*  
**Guy Holder** *Ceramics birds*  
**Josie Davis** *Ceramic animals*  
**Be Natural Candles**  
*Home fragrances*  
**Hal Of Hove** *Artisan skincare*  
**Sarah Money** *Ceramic sculpture*  
**Table Brighton** *Edible gifts*  
**Rachel Collyer**  
*Ceramics and homeware*

11.00-18.00

M	T	W	T	F	S	S
21	22	23	24	25	26	27
28	29	30	1	2	3	4
5	6	7	8	9	10	11
12	13	14	15	16	17	18



## 44 Stanley Road Department Store

54-55 Market Street, Brighton BN1 1HH



We have artists to thrill and delight in our pop-up shop in The Lanes behind what was Hanningtons! Terrariums, wood and leather, ceramics, jewellery, rug art, hats and accessories, handmade chocolate, skater accessories, lighting, children's clothing, repurposed stationery,

illustration, cool fashion, soap and bath, box art, homewares, customisable products, plants and pots, vintage and upcycled clothing – and more! Workshops, late-night shopping, events, the Grotty Grotto, DJ's and the best vibes in town! See you there.

07931 224449

thestanleyroadstore@gmail.com  
www.thestanleyroadstore.co.uk

COMMERCIAL-PRREMISES



11.00-18.00

M	T	W	T	F	S	S
21	22	23	24	25	26	27
28	29	30	1	2	3	4
5	6	7	8	9	10	11
12	13	14	15	16	17	18

## 46 Printwerks Studios

32 St James' Street, Kemptown, Brighton BN2 1RF



Printwerks Studio artists and special guests present our Christmas exhibition: *The Winter of our Disco Tent*. Showcasing resident Werks and guest artists, right in the rhythmic heart of St James' Street. Discover

a delectable feast of paintings, sculpture, prints, mixed media, psychedelic illustration, jewellery, ceramics and a 'punk' Xmas tree with artist-made baubles! Enjoy art, tea, and cake whilst browsing for your perfect, unique gift.

07795 310831

printwerksstudios@gmail.com  
www.printwerksstudios.co.uk

STUDIO-OR-WORKSHOP



10.00-17.00

M	T	W	T	F	S	S
21	22	23	24	25	26	27
28	29	30	1	2	3	4
5	6	7	8	9	10	11

## 45 The Open Studios

168 Kings Road, Brighton Seafront, Brighton BN1 1NB



The Open Studios is a working artist studio, formed of a collective of artists who create artwork in a variety of media and occupy this archway at Brighton Seafront.

**Deb Bennett** *Painting*  
**Nate Cordery** *Painting*  
**Laura Darling** *Painting*  
**Phil Dobson** *Print making*  
**John Dunn** *Ceramics*  
**Nancy Elks** *Painting*

**Charmaine** *Painting*  
**Zyg Jarzebowski** *Photography*  
**Val MacDonald** *Ceramics*  
**Sooz** *Ceramics*  
**Phil Sugg** *Drawing*  
**Tommy people's** *Mixed media*

11.00-18.00

07833 220795

natcordery@googlegmail.com  
www.theopenstudios.co.uk

STUDIO-OR-WORKSHOP



M	T	W	T	F	S	S
21	22	23	24	25	26	27
28	29	30	1	2	3	4
5	6	7	8	9	10	11
12	13	14	15	16	17	18

## 47 The Spire's Festive Fair

The Spire, St Mark's Chapel, Eastern Road, Brighton BN2 5JN



Join us as we open our doors this festive season to showcase the most unique local makers, artists and producers – all in the spectacular surroundings of The Spire.

Alongside an eclectic selection of the finest local artists, affordable

Christmas gifts and alluring crafts, visitors will be treated to one-off performances, artistic interventions and atmospheric music, as well as local producers selling delicious food and a licensed bar offering mulled wine and other tempting treats.

info@thespirearts.org  
thespirearts.org  
@thespirearts

COMMUNITY



Fri 17.00-21.00, Sat 11.00-17.00

M	T	W	T	F	S	S
21	22	23	24	25	26	27
28	29	30	1	2	3	4
5	6	7	8	9	10	11



## 48 Faye Bridgwater

10 Dawson Terrace, Brighton BN2 0EL

Leaping & Dancing: Faye Bridgwater



Faye's final collection of 2022. Her award winning paintings bring joy on a winter's day and have been exhibited at Saatchi Gallery, Glyndebourne, and Mall Galleries. Members of her mailing list can purchase these originals before they are exhibited,

07811 967257

faye@fayebridgwater.com  
www.fayebridgwater.com

HOUSE



alongside her limited edition prints and greetings cards. You can also have a nose at her studio! Joining Faye this year is **Nicola Gillis Ceramics**.

**Open one weekend only:  
Friday 25–Sunday 27 November.**

10.00–17.00

M	T	W	T	F	S	S
21	22	23	24	25	26	27
28	29	30	1	2	3	4
5	6	7	8	9	10	11

## 49 Debbie Lawrence

204 Freshfield Road, Brighton BN2 9YD

Connecting to the Land: Debbie Lawrence



After winning joint 3rd in last year's Best Open House award, **Debbie Lawrence** opens her home again for Christmas.

In her joyful, colourful paintings the healing power of nature and restoring properties of water are observed. Paintings often depict sea swimmers, evoking feelings of immersion and solitude within landscapes.

Expect original paintings on canvas and paper, prints and cards.

Also beautiful botanical jewellery by **izzie Artizan**.

Small plant gifts from Kempton's **Understory**.

Refreshments available.

Free on-street parking.

07919 115492

debbielawrenceart@icloud.com  
Debbielawrenceart.com

HOUSE



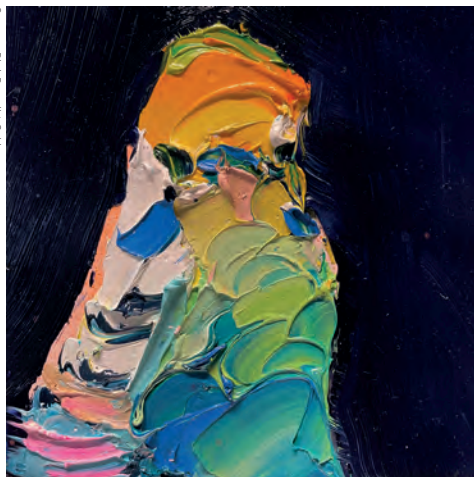
10.00–17.00

M	T	W	T	F	S	S
21	22	23	24	25	26	27
28	29	30	1	2	3	4
5	6	7	8	9	10	11

## 50 Number 57

57 Queen's Park Rise, Brighton BN2 9ZF

Summer Bird: Benedict Gubb



Number 57 is showcasing a variety of work from four friends and fellow artists: Original oil paintings, ink drawings and prints from **Benedict Gubb**; screen prints of everyday objects from renowned illustrator **Steven**

**Wilson**; colourful textile artwork from **Bob&Eve** and beautiful handmade clothes from **Dot + Cross Studio**.

Ben has exhibited widely within the UK and Australia, his work focuses on capturing interesting



Nick Gave: Bob & Eve

moments within the figurative and landscape genres. Steven's design studio collaborations include Karl Lagerfeld, Hermes and Calvin Klein. He has exhibited internationally and his work forms part of the permanent collection at the V&A. Bob&Eve's bright typographic textile wall art and

celebrity portraits showcase their irreverent take on the world. Dot + Cross Studio makes sustainable clothes that outlive fast fashion trends, producing small batches of simple styles in beautiful fabrics. We look forward to welcoming you on opening night Friday 25th November 5pm – 8pm.

07958 694194

victoriagubb@yahoo.com  
www.instagram.com/number\_57\_aoh

HOUSE



11.00–17.00

M	T	W	T	F	S	S
21	22	23	24	25	26	27
28	29	30	1	2	3	4
5	6	7	8	9	10	11

## 51 The Chapel Rottingdean

29 Park Road, Rottingdean, Brighton BN2 7HL



**Matthew Alker**  
Painting  
**Leni Smoragdova**  
Digital media  
**Wendy Granger**  
Painting  
**Mike Thorn**  
Painting  
**Tom Cotcher**  
Painting  
**John Bullock**  
Painting  
**Su Gregory**  
Painting  
**Zivana Stupkova**  
Painting

A small independent retailer in Rottingdean, we display and sell various original artwork all done by local artists, as well as furniture, lighting, jewellery and other knick-knacks and gifts. We are looking forward to welcoming you as this is our first venture into Artist Open House.

01273 780458  
thechapelrottingdean@gmail.com  
www.thechapelrottingdean.co.uk

COMMERCIAL-PREMISES



Mon-Fri 10.00-16.00  
Sat 10.00-17.00  
Sun 11.00-16.00

M	T	W	T	F	S	S
21	22	23	24	25	26	27
28	29	30	1	2	3	4
5	6	7	8	9	10	11
12	13	14	15	16	17	18

## 52 Sue Collins Art

Scots Pine Studios, 4 Clayton Avenue, Hassocks BN6 8HB



A Magical Walk - Sue Collins

Sue's greatest inspiration is the beautiful Sussex countryside where she lives. Working from Scots Pine Studios, in the village of Hassocks, she creates linocut prints using a combination of

photography and sketching, as well as drawing on her personal experiences and memories.

Sue will be joined by fused glass artist, **Nina Smith** and **Belle's Baubles**.

07756 420794  
suecollinsart@hotmail.com  
suecollinsart.com

HOUSE



11.00-16.00

M	T	W	T	F	S	S
21	22	23	24	25	26	27
28	29	30	1	2	3	4
5	6	7	8	9	10	11

## 53 Pruden and Smith

Pruden and Smith, 2 South Street, Ditchling BN6 8UQ



Giant 1ct Diamond  
Trap Dress Ring:  
Pruden and Smith

The gallery and workshop of Pruden and Smith are located on the crossroads at the heart of the Arts and Crafts village of Ditchling. For over 30 years Pruden and Smith's head designer **Rebecca Smith** has been creating unique jewellery using recycled gold, silver, platinum, and unusual gemstones from all over the world. Her recent collections are inspired by the natural landscape of the Sussex Coast.

For the AOH 2022 Winter festival, Pruden and Smith's team of skilled craftspeople have been busy creating handmade pieces in 9ct white, yellow, and rose gold, with diamonds, sapphires, rubies, and emeralds. During your visit why not take a tour of their workshop to learn about the materials, techniques, and processes used to create their distinctive work. During your tour you will also discover



Aquamarine Chunk Diamond  
Stacking Dress Ring:  
Pruden and Smith

how to recycle your old unworn jewellery into something new using their redesign service. Workshop tours can be booked on their website.

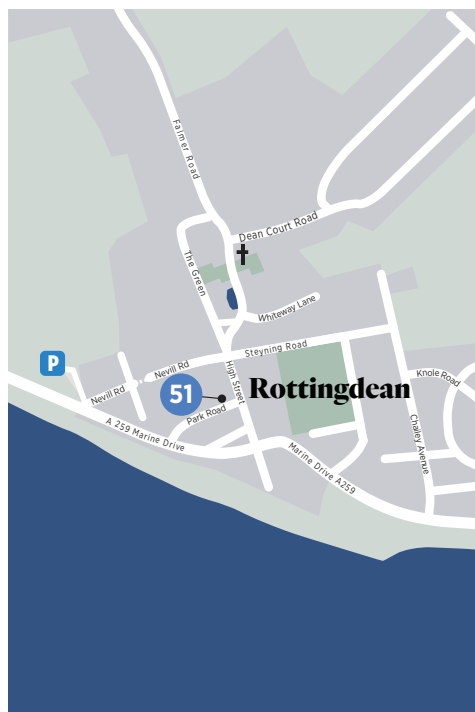
01273 846338  
info@prudenandsmith.com  
www.prudenandsmith.com

STUDIO-OR-WORKSHOP



Mon-Sat 10.00-17.00, Sun 11.00-16.00

M	T	W	T	F	S	S
21	22	23	24	25	26	27
28	29	30	1	2	3	4
5	6	7	8	9	10	11
12	13	14	15	16	17	18



## Why not take part next May?

If you live in the Brighton and Hove area, you can open your house to take part in the Artist Open Houses festival.

To find out how to get involved, including how to join a local trail, have a look at the 'Artists info' section of our website:

**<https://aoh.org.uk/artists-info-2/>**

You can also take part if you live outside the area, by becoming a guest artist exhibiting in someone else's Open House. For more information visit:

**<http://artists-seeking-houses.aoh.org.uk/>**

Registration for the May Artists Open Houses will open online in early January?

## Events in Open Houses

Some Open Houses offer you the chance to explore your creative side through hands on workshops and other events.

For all event information see the Events page of the AOH website: **[www.aoh.org.uk/events](http://www.aoh.org.uk/events)**





**COME AND LEARN OR EXPAND SKILLS, BE INSPIRED  
AND IMMERSE YOURSELF IN THE FLOW OF MAKING.**

# MAKE

**ATELIER OFFER A VARIED AND EXCITING PROGRAMME OF CREATIVE COURSES  
AT OUR BEACHFRONT WORKSHOP.**

**OUR TUTORS ARE PRACTISING MAKERS AND ARTISTS, AS WELL AS EXPERIENCED, FRIENDLY EDUCATORS!  
SUITABLE FOR A VARIETY OF SKILL LEVELS, AND LASTING FROM A FEW HOURS TO A FEW DAYS.**



**DRAWING, PAINTING, PAPER CUT, CERAMICS, JEWELLERY MAKING, BASKETRY  
LINOCUT, TEXTILE ART, XMAS CLASSES, MASTER CLASSES, COMIC BOOK ART  
VISIBLE MENDING, INDIAN BLOCK PRINTING, EMBROIDERY, PRINTMAKING,  
WILLOW WORK, ACRYLIC JEWELLERY, WEAVING, NEEDLE PUNCH, COLLAGE**

**[WWW.MADEBRIGHTON.CO.UK](http://WWW.MADEBRIGHTON.CO.UK)**



# FRAME FACTORY

High quality contemporary  
framing & giclée printing

## Framing

Bespoke framing  
Exhibition framing  
Mount cutting  
Canvas stretching  
Box framing  
Friendly professional advice



## Printing

Large format printing  
Printing onto canvas  
Limited edition giclée printing

01273 609207

[www.frame-factory.co.uk](http://www.frame-factory.co.uk)  
[info@frame-factory.co.uk](mailto:info@frame-factory.co.uk)

7 Sydney Street, Brighton, East Sussex.  
BN1 4EN

# Punk on PAPER

**ORIGINAL MUSIC  
POSTERS**

**SEX PISTOLS  
THE CLASH  
DAVID BOWIE  
THE SMITHS...**

**PUNKONPAPER.COM**

# Sussex Landscape

Chalk, Wood and Water

P

Pallant  
House  
Gallery

12 Nov 2022 – 23 Apr 2023

10% off when you book tickets  
online at [pallant.org.uk](http://pallant.org.uk)

Joseph Mallord William Turner, Chichester Canal (c.1828), Oil on canvas, Tate, Accepted by the nation as a part of the Turner Bequest 1856, © Tate



FREEVIEW 7

**latest** 

VIRGIN 159





# TIME TO SHINE

Add to your  
**#BrightonWishlist**

visitBrighton

[www.visitbrighton.com](http://www.visitbrighton.com)

PRINCESS OF WALES

Supporting Local Artists

**LAWRENCE**

ART SUPPLIES SINCE 1859

Discover Lawrence Art Shop in Hove...  
you'll find top quality artists'  
materials and equipment from  
around the world.



208-212 Portland Road, Hove, BN3 5QT  
01273 260280

(Free customer car park at rear of shop)

[www.LAWRENCE.co.uk](http://www.LAWRENCE.co.uk)



Proud To Support

# { THE ARTIST OPEN HOUSE FESTIVAL }



**Hamptons**

THE HOME EXPERTS

[HAMPTONS.CO.UK](http://HAMPTONS.CO.UK)

# We are Refreshing

## Artists Open House Sponsors & Print Partner 2022

From creative design concepts to  
quality art printing, order fulfilment,  
and mailing campaigns.

Talk to the team of experts  
who can help you.

Contact us on:

t: 01273 464 884

e: [hello@gemini-print.co.uk](mailto:hello@gemini-print.co.uk)

e: [hello@reamcreative.com](mailto:hello@reamcreative.com)



Gemini  
Print  
Group





**press  
+play**

**Festival  
of Print**

### **Tabletop Print Fair**

19 - 20 Nov

### **Exhibition**

12 Nov - 18 Dec

### **Printmaking workshops**

Information & booking  
[phoenixbrighton.org](http://phoenixbrighton.org)

PHOENIX  
ARTS TRUST

Brighton  
CCA

pressing  
matters

Room  
Fifty



Make  
Room

G. F.  
SMITH  
FINE GUMMERS



**EAST  
SIDE  
PRINT**

**A dedicated screen print studio based in East Brighton.**

We offer a programme of short courses and workshops, as well as a membership scheme and open access to our studio facilities for screen printing on paper and fabric. Please visit our website to find out more and follow us on social media.

[www.eastsideprint.org](http://www.eastsideprint.org)  
@eastsideprint\_brighton  
[info@eastsideprint.org](mailto:info@eastsideprint.org)  
01273 694976

The new arts magazine for Sussex  
is pleased to partner with  
Artists Open Houses

RO  
SA



Get your quarterly copy of ROSA delivered  
to your door before it hits the shops

**An annual subscription costs just £32**  
Go to [rosamagazine.co.uk/subscribe](https://rosamagazine.co.uk/subscribe)

The first 200 subscribers get a limited  
edition fine art print with the winter edition,  
signed by The Baron Gilvan





# The magical winter lantern trail

24 November 2022 – 1 January 2023

# Glow Wild

## Wakehurst

Ten minutes from Haywards Heath  
[kew.org/glowwild](https://www.kew.org/glowwild)

Royal Botanic Gardens  
**Kew**



Visit our shop in the Heart of Brighton's North Laine

# Contemporary Handmade Jewellery



- Heirloom quality jewellery
- Bespoke design service
- Remodelling, repairs & alterations

[www.julianstephens.com](http://www.julianstephens.com)

## NORTH LAINE JEWELLERY SCHOOL

Learn To Make Jewellery Here

[www.northlainejewelleryschool.com](http://www.northlainejewelleryschool.com)

Evening classes and short courses

Visit us at:

37 GLOUCESTER ROAD

BRIGHTON BN1 4AQ

TEL: 01273 692110