

# Artists Open Houses Winter 2023

Weekends: 25 November  
to 10 December  
[aoh.org.uk](http://aoh.org.uk)







[www.clarawilkinsonart.com](http://www.clarawilkinsonart.com)

venue no 17

# CLARA WILKINSON

contemporary painter

paintings  
giclee prints  
cards  
silk squares



## Sponsors and Supporters



Victor Boorman & Co.



AOH would like to thank Brighton and Hove City Council, for their support during 2023.



Disclaimer: Whilst every care has been taken to ensure that the information given in this publication is accurate at the time of going to print, AOH cannot be held responsible for any variations, errors or admissions of which we have not been advised. We recommend that visitors confirm details for individual venues online before setting out. No recommendation is implied in any of the listings. Under no circumstances can AOH accept responsibility for any loss, damage or injury sustained by any member of the public visiting the Artists Open Houses festival.

## Contents

Introduction	3
Travel	4
How to use the brochure	4
Maps for Open Houses in Brighton and Hove	5-7
Details of Open Houses in Brighton and Hove	8-27
Details of Open Houses outside Brighton and Hove	28
Maps for Open Houses outside Brighton and Hove	29



Cover image:  
Judy Stevens: *Winteriesse, Hurdy Gurdy Player*

*Der Leiermann: Wilhelm Müller (from Winteriesse)*

*There, beyond the village,  
stands a hurdy-gurdy player;  
with numb fingers  
he plays as best he can.*

*Barefoot on the ice  
he totters to and fro,  
and his little plate  
remains forever empty.*

*No one wants to listen,  
no one looks at him,  
and the dogs growl  
around the old man.*

*And he lets everything go on  
as it will;  
he plays, and his hurdy-gurdy  
never stops.*

*Strange old man,  
shall I go with you?  
Will you turn your hurdy-gurdy  
to my songs?*

Design: Chris Lord

Print: Gemini Press [www.gemini-print.co.uk](http://www.gemini-print.co.uk)

### AOH Team

Judy Stevens *Festival Director*

Chris Lord *Design and Development Director*

April Williams *Festival Manager*

Nicola Jeffs *PR*

Siobhan Scott *Digital Communications*

Tim Jukes *Website Design and Development*

Fiona McTernan *Ads and Sponsorship*

Georgina Huguenet *Finance Manager*

AOH would like to thank:

Our partners:

Mark Tully *Gemini Print*

Angi Mariani *The Latest / Latest TV*

Also: Paul Clark and Roger Browning

Our sponsors: Lawrence's Art Supplies, Hamptons Estate Agents, Gemini Print, Victor Boorman.

Artists Open Houses Ltd is a not for profit company.  
Registration N<sup>o</sup>. 5420675 (England and Wales)





HANNINGTONS  
BRIGHTON

# SHOP SMALL THIS CHRISTMAS



## **Sometimes the best things come in the smallest of packages**

Hanningtons is Brighton's hidden gem and home to your locally sourced, unique, and perfect gifts this Christmas. Peruse a range of gifts from independent and artisan retailers and step into a world of Christmas wonder at Hanningtons. We have a range of merry events for you to enjoy too, including live music and festive food and drink.

*Why go anywhere else?*

◆ @HanningtonsBrighton

◆ @HanningtonsBTN

◆ /HanningtonsBrighton

[www.hanningtonsbrighton.com](http://www.hanningtonsbrighton.com)



# Artists Open Houses

# Winter 2023

Weekends: 25 November  
to 10 December

This winter the Artists Open Houses festival sees many familiar Open Houses returning for 2023, as well as an array of exciting new venues to explore. As the cold weather arrives, the Open Houses provide a unique opportunity to buy Christmas gifts for friends and family in the warmth of artists' homes, many offering Christmas delicacies and a glass of something mulled!

This year, artists and makers present a range of delights, including extraordinary crocheted food plates, fabulous sewn creatures, beautiful mouth-blown glass fungi sculptures, brilliant Mexican influenced clay whistles, alongside great jewellery, ceramics, painting, photography and printmaking. For a different experience visit The Pink Door Open House for a family show, including spoken word performances. While Outside In's exhibition *Humanity*, at Hove Museum, provides a platform for artists encountering significant barriers to the art world.

When buying from Open Houses you are safe in the knowledge that your money is going straight to the maker, and that you are supporting artists' careers in the process. It's a great way to discover new arts and crafts from Sussex makers and meet members of the local creative community. Visit Open Houses in your neighbourhood, as well as those further afield, and support this fantastic range of artists and makers across the city and region.

Simply look at the map online or in this guide and plan your route for a great day out exploring all areas of the city, from West Hove to Rottingdean and beyond.

## Opening times:

Most Open Houses are open weekends from 11.00-17.00, but opening times may vary from venue to venue, so it is best to check individual brochure listings. Some venues are also open on weekdays.





## Travel information

### Bus

[www.buses.co.uk](http://www.buses.co.uk)

Cheapest bus fares are available using the Brighton & Hove buses smart phone app. With a city saver ticket, you can use buses in the city area all day.

A city saver ticket costs:

£5 on the app

£5.50 in cash from the driver

£11 for a Family ticket – up to two adults and three children

Go to [www.buses.co.uk](http://www.buses.co.uk) for fares and different ways to pay.

You can now use Tap On Tap Off to get the best fare.

Buses are free if you have an England National bus pass (like our disabled person's bus pass or older person's bus pass).

### Rail

[www.nationalrail.co.uk](http://www.nationalrail.co.uk)

### Bike Hire Scheme

<https://beryl.cc/index.php/scheme/brighton-and-hove>

You can hire a Beryl BTN Bike in three easy steps:

Download the **Beryl app** to find your nearest vehicle.

There are hundreds located across the city.

Find your bike, tap to unlock. Off you go!

When you get to where you're going, park up in one of the designated Beryl hubs and get on with the rest of your day.

Currently, bikes must be returned to active bays. You may incur a charge if bikes are left at hubs which are currently not in use.

### Cars and Parking

<https://www.brighton-hove.gov.uk/parking-and-travel/parking/>

Brighton & Hove has a range of car parks across the city.

You can check specific zone information for the cost of parking in Brighton & Hove. It varies depending on the demand for available spaces.

### Payment for Parking

On-street pay and display machines were taken out of use on 31 May 2023.

You can pay for parking:

- using the **Pay by Phone app**
- by phone on **0330 400 7275** using your credit or debit card
- with cash or card at one of the city's **PayPoint** vendors

Payment machines will remain in place at council barrier car parks.

### Park and Ride

If you're driving from outside the city and want to avoid traffic and parking in the city centre, you can park for free at Withean Sports Complex and buy a bus ticket into the city.

The park and ride site is at:

Withean Sports Complex car park

Tongdean Lane

BNI 5JD

Find Withean Sports Complex on Google Maps

### Charging an electric car

To find the location of the nearest on-street charge point use Zap-Map [www.zap-map.com/live/](http://www.zap-map.com/live/)

## How to use the brochure

The maps on the next three pages, show venues within the city. The listings for those venues are on pages 8-27. Listings and maps for venues in the surrounding area are on pages 28-29.

Information on opening times, opening dates and facilities offered by venues, are at the bottom of each listing.

## Key to symbols

### Venue listing details

Contact details

01273 123456  
[www.myopenhouse.com](http://www.myopenhouse.com)  
[me@myopenhouse.com](mailto:me@myopenhouse.com)

Days and dates not open  
*light type on white background*

Opening times  
24hr clock  
11.00-17.00

M	T	W	T	F	S	S
22	23	24	25	26	27	28
29	30	1	2	3	4	5
6	7	8	9	10	11	12

**STUDIO OR WORKSHOP**

Facilities offered  
details below

Type of venue

Days and dates open  
*bold white type on brown background*

### Facilities offered

- Refreshments served
- Disabled access
- Easy parking
- Garden open
- Workshops/demonstrations
- Live music
- Card payment facility
- Tap water refill available
- NEW New venue – first year open

### Maps

- Open House venues
- Station
- Landmark building
- Church
- Car Park
- Built up areas
- Park or urban green area
- Rural area
- Water

### Access

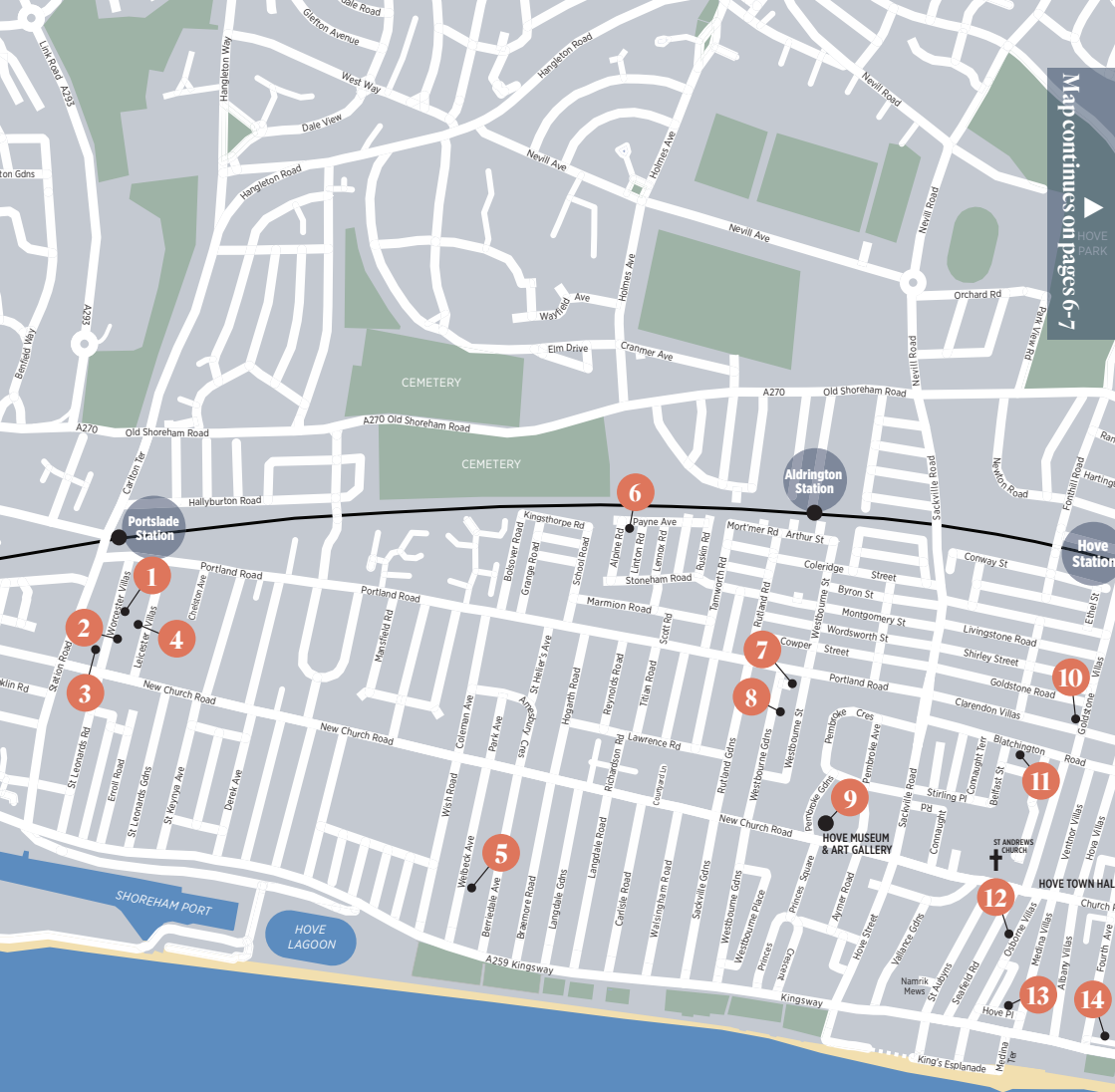
The majority of houses are ordinary homes and may not have disabled access. Please look at the 'disabled access' section on our website for information on which houses are fully wheelchair accessible.

### Follow AOH

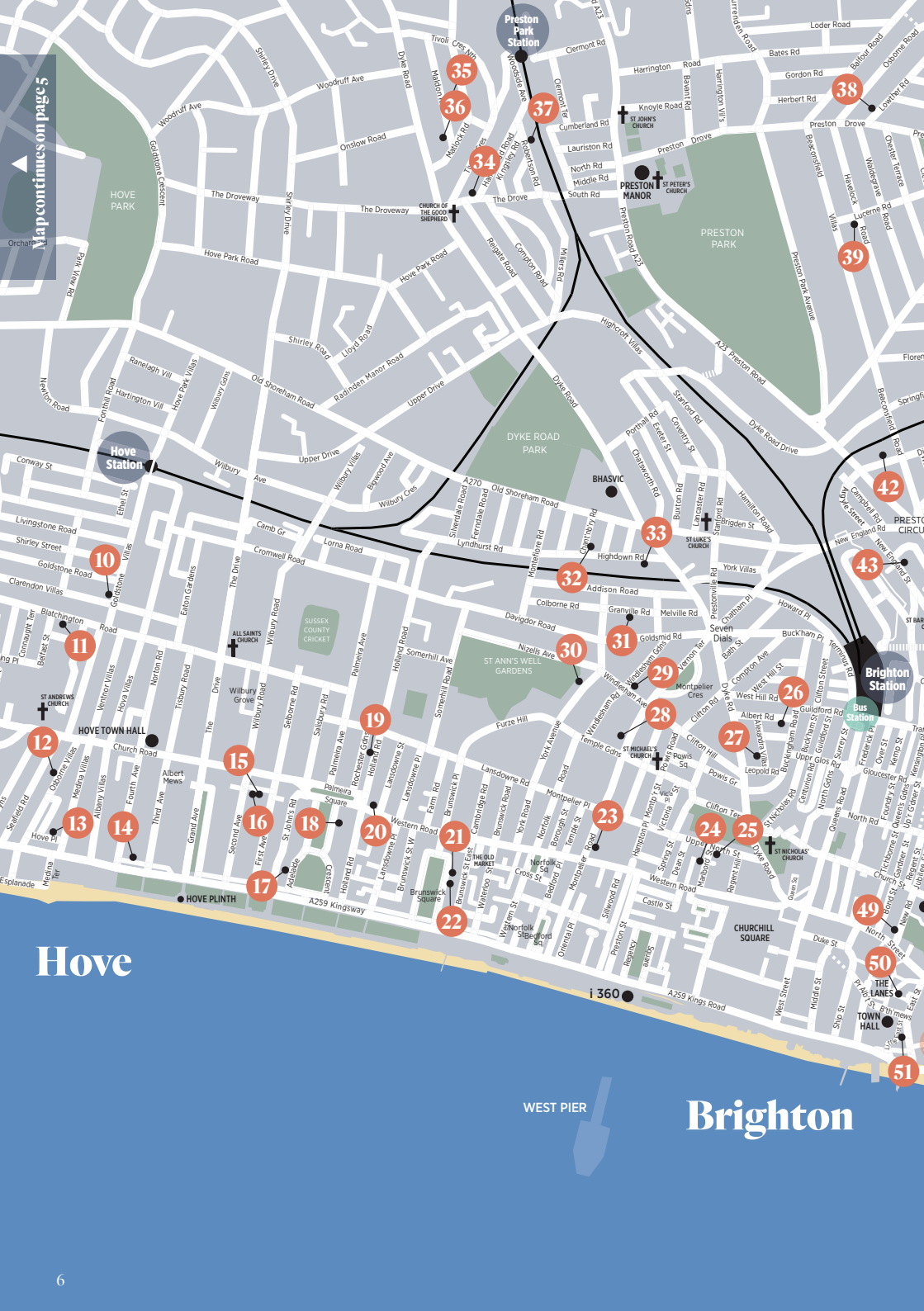


[www.aoh.org.uk/newsletter](http://www.aoh.org.uk/newsletter)





# Hove



Map continues on page 5

# Hove

# Brighton

WEST PIER





London Road Station

Housecroft Station

46

40

41

44

45

47

48

53

52

54

55

57

56

58

BRIGHTON PALACE PIER

# Kemptown

BRIGHTON 7 MARINA

# 1 Worcester Sauce

33 Worcester Villas, Hove BN35 2TA

**Wanda McRae**

*Sculpture and mosaics*

**Gill Hills** *Mixed media*

**Joanna's House of Felt**

**Jade Jeffers** *Beachcombing art*

**Skin Spirit** *Body care*

**Ximena Heasman** *Ceramics*

**Naomi Frances** *Glass*

**Sally Smith** *Painting*

**Fay Hughes** *Textiles*

**Madame Treacle** *Cards*

**Terry Guile** *Jewellery*

**Chris Hesketh** *Ceramics*

**Mermaids Purses**

**Nadur Cre** *Ceramics*

**Kelly Bergwerf** *Mixed media*

**Anna Cates** *Turned wood*

**Claire Nicholson** *Jewellery*

**Lara Sparks**

*Cushions and lampshades*

**Deborah Forsdyke** *Stained glass*

**Beach Pottery** *Ceramics*

**Sylvie Howitt**

*Vintage papercuts*

**Glowing Gardens**

*Driftwood sculpture*

**Lyn Rohde** *Painting*

**Ella Johanson** *Candles*

**Sarah Jones** *Prints*

plus guest artists



Dioramas: Sylvie Howitt



Seedhead Portland Stone: Wanda McRae

A festive house full of wonderful, original fine art and hand crafted gifts. Enjoy a warming mulled wine whilst you browse the vast array of work in the house and garden and our little studio. We will be joined by some familiar faces and some exciting new artists. We will also be serving home-made cakes and festive treats. Free Parking after 12pm.

07891 749555

w.mcrae@ntworld.com

instagram worcestersauceart

www.wandamcrae.com

**HOUSE**

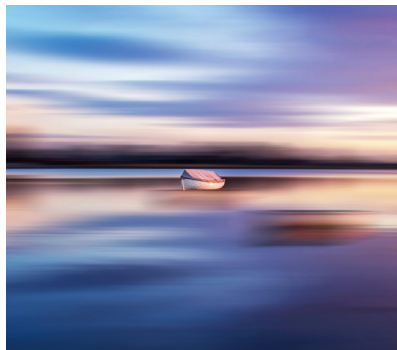


11.00-17.00

M	T	W	T	F	S	S
20	21	22	23	24	25	26
27	28	29	30	1	2	3
4	5	6	7	8	9	10

# 2 Gill Copeland Photography

17 Worcester Villas, Hove BN35 2TA



Harbour Sunset: Gill Copeland

Gill will be opening her garden studio to display her latest award winning photography collections. Her subjects capture the unity and desertion in nature through seascape, landscape and flora. Complimented by Anita and

Sarala's much loved pop-up Indian Tapas Cafe - which will only be open for the first two weekends only.

**Gill Copeland's** photography studio will be open all three weekends.

07812 403016

gill@gillcopeland.com

www.gillcopeland.com

**STUDIO-OR-WORKSHOP**



11.00-16.30

M	T	W	T	F	S	S
20	21	22	23	24	25	26
27	28	29	30	1	2	3
4	5	6	7	8	9	10

# 3 The Round Space Studio

6 Worcester Villas, Hove BN35 2TB



Flight Over Devil's Dyke: James Baker

We welcome your visit to the handcrafted Round Space Studio **James Baker** is a carpenter, artist and maker inspired by the landscape. James uses charcoal and watercolour in his paintings. Also for sale are pieces made from locally sourced branch

wood and recycled materials such as lamps, sculptures and rustic furniture. He will be joined by **Dan Johnson**, metal artist, who uses scrap and repurposed steel, and **Wolfram Lohr** who makes beautiful handmade leather items for home and person.

07860 200631

jamesbakerdesign@gmail.com

www.jamesbaker.org

**STUDIO-OR-WORKSHOP**



11.00-17.00

M	T	W	T	F	S	S
20	21	22	23	24	25	26
27	28	29	30	1	2	3
4	5	6	7	8	9	10



## 4 number forty

40 Leicester Villas, Hove BN3 5SQ



Stillness at Great Dixter: Paula Fahy

### Paula Fahy *Painting*

Why not cheer up the winter months with a bit of colour. I would love you to visit whether looking for a present or just having a browse. Most of my paintings are in oil using vibrant

hues, but I have also been experimenting with new mixed media techniques on stretched paper. I will be exhibiting a wide range of work, some large canvases but also smaller framed pieces.

07900 911022  
paula.fahy1962@gmail.com  
instagram paula.fahy

HOUSE



10.00-17.00

M	T	W	T	F	S	S
20	21	22	23	24	25	26
27	28	29	30	1	2	3
4	5	6	7	8	9	10

## 5 11 Welbeck Winter

11 Welbeck Avenue, Hove BN3 4JP



Sarah Deere-Hall & Matt Hall

New and returning local makers show gorgeous new work. Textural. Tactile. Festive. Mince pies and complimentary mulled wine.

**Ursa Brown** *Hand-dyed textiles*

**Tabitha Bargh**

*Sustainable lighting*

**Sarah Deere-Hall**

*Thrown ceramic bowls and pots*

**Matt Hall**

*Turned wooden bowls and vessels*

**Janifer Wall**

*Silver jewellery, gold accents*

**Emma Gale**

*Textile print and collage*

**Betty Webb Wild Things**

*Assembled creatures and painted paper vessels*

01273 735638  
sjdoi@mac.com  
www.instagram.com/trwelbeck

HOUSE



11.00-17.00

M	T	W	T	F	S	S
20	21	22	23	24	25	26
27	28	29	30	1	2	3
4	5	6	7	8	9	10

## 6 Villa LVI (56)

56 Payne Avenue, Hove BN3 5HD



Waterfall (lightshade): Virginie Vincent

In the heart of Poet's corner, Villa LVI is an established open house with an international team of artists exhibiting a wide variety of art, reflecting the group's diversity in origin and inspiration. Not to be missed!

**Erwin Vanrooyen**

*Jewellery*

**Virginie Muller**

*Ceramics*

**Serena Sussex**

*Painting*

**Kai Nemra**

*Painting*

**Moon Munson**

*Hanji paper*

**Paperbotanica**

*Paper florist*

**Virginie Vincent**

*Mixed media*

**Simon McLennan**

*Drawings*

07814 217142  
vvinic23@gmail.com  
www.instagram.com/Villa.lvi

HOUSE

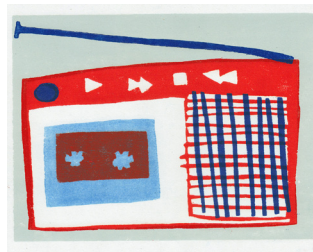


11.00-17.00

M	T	W	T	F	S	S
20	21	22	23	24	25	26
27	28	29	30	1	2	3
4	5	6	7	8	9	10

## 7 The Studio Gallery

4 Westbourne Grove, Hove BN3 5PJ



Cassette Player: Hannah Forward

Previously at 12 Scott Road, this is our third time in our new location, but this time in the unit next door!

An array of contemporary work by local artists in a modern glass-fronted split-level studio, where you will find prints, paintings, ceramics, jewellery and more. Nominated for best Open House in May!

07747 462962  
hello@georgiaflowers.co.uk  
www.instagram.com/fox\_forward\_flowers\_friends

STUDIO-OR-WORKSHOP



**Hannah Forward**

**Georgia Flowers**

**Joy Fox**

**Sarah Bidwell**

**Ken Eardley**

**Amanda Doughty**

**Glass Art Werks**

**Belen Gomez**

**Emma Carlow**

**Sarah Edmonds**

**Edwin Lock**

**Rarebit Design**

**Loop Loop**

11.00-17.00

M	T	W	T	F	S	S
20	21	22	23	24	25	26
27	28	29	30	1	2	3
4	5	6	7	8	9	10

## 8 Bluebell WOULD

45 Westbourne Gardens, Hove BN3 5PN

Rapunzel: Bluebell Roebuck



A friendly, longstanding open house, dedicated to making art inclusive and accessible. Come and meet the artists, and leave inspired, with maybe a purchase or two.

### Bluebell Roebuck

*Photography, painting and hand-knits*

### Polly Marx Evans

*Linocuts*

### Beachside Kiln

*Glass*

### Sarah Duffield

*Painting*

### Mark Munroe-Preston

*Treescapescapes*

### Mariana K

*Print making*

### Kore Sage

*Mixed media*

### Wild Jar

*Terrariums*

### Kai Jed Creative

*Digital media*

### Fanny Fielding

*Painting*

### iHeart Pop Art

*Digital media*

### Isolation Monster

*Digital media*

### Wild Flora

*Jewellery*

### Woofing Fabulous

*Ceramics*

### SweetiePips Jewellery

*Lulu McQueen Jewellery*

*Oh Someday Jewellery*

*Hey Sassy Jewellery*

### BeauBottletops

*Mixed media*

### Preserved By Jay

*Bath treats*

### Abeille Botanicals

*Cyanotypes*

### Kim Tillyer

*Witchmountain*

*Maria Buttlor*

*Print making*

*Heather Parr*

*Painting*

### Claire Barrett

*Print making*

### MegalilyDesign

*Print making*

### Papier Maverick

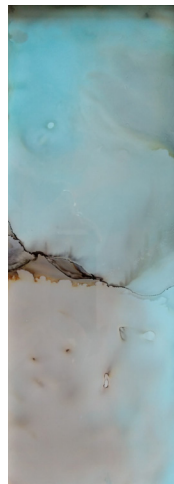
*Papier mache sculpture*

### Muddy Lotus

*Candles*

### Sarah's Doll Parts

*Porcelain doll heads*



Flux: Bluebell Roebuck

07739477611

[Bluebellwouldopenhouse@gmail.com](mailto:Bluebellwouldopenhouse@gmail.com)

[www.instagram.com/bluebellroebuck](https://www.instagram.com/bluebellroebuck)

### HOUSE



11.00-18.00

M	T	W	T	F	S	S
20	21	22	23	24	25	26
27	28	29	30	1	2	3
4	5	6	7	8	9	10

## 9 Humanity

Hove Museum of Creativity, 19 New Church Road, Hove BN3 4AB



The Beach: Christopher Carrlo

Award-winning charity **Outside In** provides a platform for artists facing significant barriers to the art world due to health, disability, social circumstance or isolation and its national open exhibition, which features 80 artworks on the theme of 'humanity', will be opening at **Hove Museum of Creativity** on 25th November 2023 and will run until 21st January 2024. This represents the final leg of a national tour for *Humanity*, which initially opened at Sotheby's Old Bond Street in

January 2023 before touring to Project Ability in Glasgow during the Summer.

Sussex is the birthplace of *Outside In* and numerous local artists have work included in the show. *Outside In* artists have interpreted humanity from a wide variety of perspectives, both personal and global, and the work on show and on sale includes paintings and drawings, sculpture, ceramics, photography, film and performance pieces. Free entry.



Rebirth: V. Rivers

10.00-17.00

01903 898171

[info@outsidcin.org.uk](mailto:info@outsidcin.org.uk)

[www.outsidcin.org.uk](http://www.outsidcin.org.uk)

### GALLERY



M	T	W	T	F	S	S
20	21	22	23	24	25	26
27	28	29	30	1	2	3
4	5	6	7	8	9	10
11	12	13	14	15	16	17

## 10 Dion Salvador Lloyd

18 Goldstone Villas, Hove BN3 3RQ



Open House Photo: Sly Ojala



Stillwater 200cm x 120cm oil on canvas 2023 Dion Salvador Lloyd

Brighton-born established artist **Dion Salvador Lloyd** warmly invites you to his sunny Victorian home. Exhibiting a new collection of contemporary abstract sea and landscape paintings and works on paper, alongside new tree paintings and botanical works inspired from in and around the South Downs and Sussex coastlines. Earlier paintings from previous years will also be exhibited. Limited edition signed prints also available to view.

Recent achievements include: Selected for The Wells Art Contemporary Open Art Prize 2023

Represented by galleries in London and the UK Winner Best Open House 2015 Commissions undertaken Open by appointment at other times and days Comments from Open House visitors book: *'Blown away'* *'Really wonderful work! Best I've seen this year and it was lovely to meet you'* *'As always, very special'* *'Spectacular work thank you'* *'I loved your energy! I am grateful for the insight into your mind'* *'Gorgeous texture and atmosphere'*

07718 450745  
info@dionsalvador.co.uk  
www.dionsalvadorlloyd.com



10.00-18.00						
M	T	W	T	F	S	S
20	21	22	23	24	25	26
27	28	29	30	1	2	3
4	5	6	7	8	9	10

## 11 Vida Active Artists

Vida Active Exercise Studio, 74 Blatchington Road, Hove BN3 3YH



Cleria's window: Polly Ballantine

Vida Active Artists, winners of Best Open House in Brighton May 2023, are pleased to invite you to another delightful and varied exhibition of our work.

07817 988870  
polly.ballantine@gmail.com  
vimco.com/863504536

COMMERCIAL-PREMISES



- Tracy Smith**  
Textiles
- Innis McAllister**  
Photography
- Demi-leigh Ansell**  
Painting
- Claire Whyley**  
Mosaic
- Sudhi S Pooniyil**  
Painting
- Katerina Slobodyany**  
Painting
- Zaya Khaltar**  
Painting
- Alexis Rayner**  
Jewellery
- Heather Cogger**  
Painting
- Hannah Cogger**  
Painting
- Kristine Balsa**  
Painting
- Lucy Eldridge**  
Illustration
- Polly Ballantine**  
Textiles

11.00-19.00

M	T	W	T	F	S	S
20	21	22	23	24	25	26
27	28	29	30	1	2	3
4	5	6	7	8	9	10

## 12 David Streeter and Friends

54 Osborne Villas, Hove BN3 2RB



Christmas Tree Santas: Andrea Gregory - Needle Felt Decorations

- David Streeter**  
Photography and workshops
- Linescapes** Illustration
- Palomita** Jewellery
- Claire Nicholson**  
Silver jewellery
- Vicky Gomez**  
Print making
- Andrea Gregory**  
Needle felt decorations
- Nicole Urbanski**  
Textiles
- Em Erskine** Textiles
- Claire Scott** Ceramics
- Cleo Gabriel**  
Botanical soaps
- Tezel Bahcheli**  
Sculpture
- Louise Erskine**  
Painting
- Anni Axworthy**  
Mixed media
- Lucy Palmer**  
Preserves/Gifts

Enjoy a hot noggin and festive treats while you shop for local, affordable art and gifts.

07803 743782  
davidjohnstreeter@gmail.com  
www.instagram.com/davidstreeterandfriends/



11.00-17.30						
M	T	W	T	F	S	S
20	21	22	23	24	25	26
27	28	29	30	1	2	3
4	5	6	7	8	9	10



## 13 Paul Houlton Studio

6 Hove Place, Hove BN3 2RG



Vorticist Nude No.1: Paul Houlton

A wide ranging retrospective exhibition in the artist's studio of paintings, drawings and prints, mainly of figurative subjects in an eclectic mix of styles, with influences comprising: Vorticism and Picasso, nudes and portraits, English landscape and Japanese philosophy.

In addition to being able to view nearly 50 original works, some being displayed for the first time, there is also the opportunity to purchase fine art prints and cards of many of the works displayed.

01273 733666  
mail@paulhoulton.art  
www.paulhoulton.art

**STUDIO-OR-WORKSHOP**



11.00-17.00

M	T	W	T	F	S	S
20	21	22	23	24	25	26
27	28	29	30	1	2	3
4	5	6	7	8	9	10

## 14 11 Kings Gardens

Flat 1, 11 Kings Gardens, Hove BN3 2PF



Dahlia: Katherine Pout

**Katherine** and **Oscar** are a dynamic duo of artists living on Hove Lawns. Our mediums range from ceramics, sculpture, painting, paper cutting and furniture making.

We would love to welcome you for our first Open House!

07583 965222  
design@katherinepout.com  
www.katherinepout.com

**HOUSE**



11.00-17.00

M	T	W	T	F	S	S
20	21	22	23	24	25	26
27	28	29	30	1	2	3
4	5	6	7	8	9	10

## 15 Bookroom Art Press Gallery

11 Queen's Place, Hove BN3 2LT



The Bookroom Art Press Gallery publishes limited edition prints after 20th Century painters Eric Ravilious, Edward Bawden, Paul Nash, Ardizzone, and linocut artists of the 1930's Grosvenor School, Cyril Power, Sybil Andrews, Claude Flight et al. This work is on permanent display, and can be purchased or ordered, framed or unframed. We also offer a complete framing service

for your own work, with a wide choice of frames and mounts. And for this Winter Open Houses we are delighted to be exhibiting a selection of original oils and drawings by **Rudolf Ihlee** (1883-1969). Brilliant student at the Slade, with contemporaries Stanley Spencer and Edward Wadsworth, Ihlee exhibited at the Leicester Galleries before settling in the fishing port of Collioure,

Collioure: Rudolf Ihlee



South of France. His paintings reflect – just as Derain and Matisse's had before him – the light-filled intensity and colour

evident in the area. The exhibition also contains some of his drawings and preparatory sketches.

01273 682159  
darion@bookroomartpress.co.uk  
www.bookroomartpress.co.uk

**GALLERY**



10.00-17.00

M	T	W	T	F	S	S
20	21	22	23	24	25	26
27	28	29	30	1	2	3
4	5	6	7	8	9	10
11	12	13	14	15	16	17

## 16 The Walker Gallery

2 Queens Place, Hove BN3 2LT



Missing Mingling: Andrew Walker

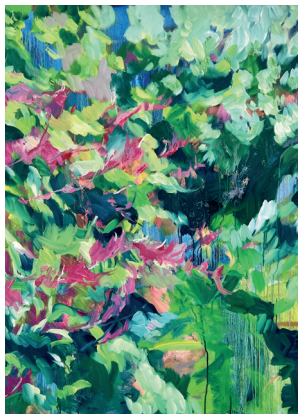
07793960004  
andy@outcastagencies.co.uk  
www.thewalkergallery.co.uk  
**STUDIO-OR-WORKSHOP**



		11.00-17.00						
M	T	W	T	F	S	S		
20	21	22	23	24	25	26		
27	28	29	30	1	2	3		
4	5	6	7	8	9	10		

## 17 Clara Wilkinson

Flat 1, 33 Adelaide Crescent, Hove BN3 2JJ



After the rain: Clara Wilkinson

Clara is opening her seaside Regency home and studio for a third year this Christmas, exhibiting recent oil paintings and works on paper.

She'll also be selling beautifully produced giclee prints, cards and her new range of silk square scarfs with designs taken from original abstract and botanical paintings.

clara@clarawilkinsonart.com  
www.clarawilkinsonart.com  
@clarawilkinsonart



		11.00-17.00						
M	T	W	T	F	S	S		
20	21	22	23	24	25	26		
27	28	29	30	1	2	3		
4	5	6	7	8	9	10		

## 18 Number 10

10 Palmeira Square, Hove BN3 2JB



Manic Botanic 300. Janie Ranger

It's time to get festive! Buy unique gifts directly from 15 local makers, it's the perfect place to grab your handmade Christmas presents.

Art at Number 10 is offering visitors the chance to engage directly with artists, and purchase a broad selection of artwork at affordable prices.

We have a unique selection of jewellery, ceramics, glassware, textiles, homewares, illustration and artwork. Meet, view, buy or commission products across this beautiful ground floor Grade II listed house.

07816 922979  
janieranger@googlemail.com  
www.janieranger.com



		11.00-17.00						
M	T	W	T	F	S	S		
20	21	22	23	24	25	26		
27	28	29	30	1	2	3		
4	5	6	7	8	9	10		

## 19 Royce Wood Junior studio

Flat 13, 50 Rochester Gardens, Hove BN3 3HT



The Advertizes: Royce Wood Junior

I am an abstract painter working loosely in the post vandalism style. I work with acrylics, street posters, stickers, spraypaint, house paint and lots of found of materials. My work is equally influenced by classic abstraction as it is by the urban environment.

07801 961578  
slipist@googlemail.com  
roycewoodjunior.net



		11.00-17.00						
M	T	W	T	F	S	S		
20	21	22	23	24	25	26		
27	28	29	30	1	2	3		
4	5	6	7	8	9	10		

## 20 Salvage

84 Western Road, Hove BN3 1JB

Guest artists join curator **Dinah Duffton** to exhibit an exciting array of contemporary art in the warm ambience of Salvage cafe.

Follow our dedicated Instagram page for full details on all the artists.

Open during cafe opening hours



Land, Air, Sea: D Duffton

dinahspace@gmail.com  
dinahduffton.com  
www.instagram.com/art\_at\_salvage

COMMERCIAL-PREMISES



Sa 09.00-18.00, Su 10.00-16.00

M	T	W	T	F	S	S
20	21	22	23	24	25	26
27	28	29	30	1	2	3
4	5	6	7	8	9	10

## 21 21a Brunswick Square

21A Brunswick Square, Hove BN3 1E



Never stop playing: Stoats & Weasels

Modern, bright, stylish designs for the wall, body and home. Plenty of designs to raise a smile too. Our work covers affordable illustration, jewellery, clothing, homewares, photography, textiles, printmaking, decorations, plus lots of gift items, stocking fillers and greeting cards. Shop local this Christmas!

Our artists and makers:

**Stoats & Weasels, Laura Danby, Hello Dodo, Alex Bamford, We Are Mountain, GRD Design, From Brighton With Love, Julie Ingham, And Mash.**

NB: Closed on Sat 9th.

01273 720685  
lisa@stoatsandweasels.com  
www.stoatsandweasels.shop/aoH

HOUSE

M	T	W	T	F	S	S
20	21	22	23	24	25	26
27	28	29	30	1	2	3
4	5	6	7	8	9	10

## 22 Alejez art & Barry's artefacts

Flat 5, 16 Brunswick Square, Brighton BN3 1EH



A Cycle to Adelaide Crescent Brighton and Hove: Sealfont, alejez

Two amazing and very different venues in one building. On the first floor come up to enjoy art by **alejez**. On the ground floor find your unique present among **Barry's artefacts**. alejez creates landscapes and scenes of Brighton and Hove, the coast and

the Sussex countryside. He works from very detailed monochrome ink drawings to which he applies colour digitally. His work echoes traditional architectural, ornithological and botanical prints with a scientific mind and passion.

07946 38116  
alexw2@hotmail.com  
alejez.com

HOUSE



M	T	W	T	F	S	S
20	21	22	23	24	25	26
27	28	29	30	1	2	3
4	5	6	7	8	9	10

## 23 92 Montpelier Road

92 Montpelier Road, Brighton BN1 3BE



Hastings Clay Bud Vase: Ros Poerwantoro

**Katherine Snow** *Luxury skincare*  
**Serena Wells** *Textiles*  
**Risza Lopes da Cruz** *Jewellery*  
**Corpo Sancto**  
*Scented candles and perfumes*  
**Diana Johan** *Indonesian treats*  
**Holly Loader** *Painting*  
**Emma Harris** *Photography*  
**Ros Poerwantoro** *Ceramics*  
**Jessica Christie-Miller**  
*Feather jewellery*

**Amy Burrows** *Print making*  
**Paul Rapley** *Turned wood*  
**Raing McCullagh** *Woven textiles*

It's your once in a year opportunity to enter this magnificent house for your Christmas shopping. We're excited to welcome several artists who will be exhibiting their unique products for the first time in our home.

Open 1 weekend ONLY!

07526 875580  
risza.lopedacruz@gmail.com  
@g2montpelierroad

HOUSE



M	T	W	T	F	S	S
20	21	22	23	24	25	26
27	28	29	30	1	2	3
4	5	6	7	8	9	10



## 24 Gicléexpress Presents...

13 Marlborough Street, Brighton BN1 3EG



Gicléexpress is a trusted 360 Artist Development Consultancy nestled in the vibrant heart of Brighton's North Laine.

We support artists along every step of their creative journey and this year's AOH is the perfect opportunity to showcase our

07980 271563  
hello@gicléexpress.com  
www.gicléexpress.com

HOUSE



incredibly talented artists and the exceptional quality of work we produce. Featuring 12 emerging and established contemporary artists, our Open House promises a unique experience for Christmas shoppers and art enthusiasts alike.

12.00-18.00

M	T	W	T	F	S	S
20	21	22	23	24	25	26
27	28	29	30	1	2	3
4	5	6	7	8	9	10

## 25 The Pink Door 38

38 Upper North Street, Brighton BN1 3FG



We are excited to welcome you to our Regency home on Upper North Street. We are a family of artists who will be displaying our eclectic mix of work from poetry to photography, and even crochet. Our house is open to everyone from every background so please stop by. Perhaps you will find some unique Christmas gifts!

**India Grant**

*Performance artist*

**AFO. the poet**

*Performance artist*

**Benjamin Grant**

*Photography*

**Amy-Lou Tilley**

*Textiles*

india@nothingrandom.com

www.instagram.com/thepinkdoor38/

10.00-17.00

HOUSE



M	T	W	T	F	S	S
20	21	22	23	24	25	26
27	28	29	30	1	2	3
4	5	6	7	8	9	10

## 26 The Albert Road House

24 Albert Road, Flat 2 First Floor, Brighton BN1 3RN



Printed by Robin Ajder

This winter we are back at The Albert Road House with two artists, focusing on abstract drawings by Robin Ajder and prints by Mathias Hermann Löffler. Come and drop in to meet the makers and have a chat.

07478 685536  
ms.h.loeffler@gmail.com

HOUSE



Showing the works of:

**Robin Ajder**

*Drawing*

**Mathias Hermann Löffler**

*Print making*

11.00-17.30

M	T	W	T	F	S	S
20	21	22	23	24	25	26
27	28	29	30	1	2	3
4	5	6	7	8	9	10

## 27 ALIZETI CREATIVE

Side Flat 1, 3 Alexandra Villas, Brighton BN1 3RE



Gelli Print: Renée Graham Adriani

Escape the frenzy of Christmas shopping in this relaxed and festive venue. We have a wonderful range of affordable and unusual Christmas gifts and art, all handmade by local artists. Plus tea sampling and baked treats. A warm welcome awaits you!

07770 287245

reneeoutthere@yahoo.co.uk

Instagram: @reneeadriani

HOUSE



**Renée Graham Adriani**

*Gelli prints and mixed media*

**Nick Gardner** *Painting*

**Eleanor Walker-Todd**

*Japanese textiles*

**Mike Savage** *Garden metalwork*

**A Little Cup Tea**

*Tea blends and sampling*

11.00-17.00

M	T	W	T	F	S	S
20	21	22	23	24	25	26
27	28	29	30	1	2	3
4	5	6	7	8	9	10

## 28 Brighton Girls Hive Artists

66-68 Montpelier Road, Brighton BN1 3AT



Cephalopod Scenes: Ruth Wragg-Jones

**Susie Hallows**  
Ceramics  
**Amy Burrows**  
Print making  
**Prescription Resin**  
Mixed media  
**Hey Lyla Crafts**  
Textiles  
**Ruth Wragg-Jones**  
Print making  
**Georgia Flowers**  
Print making  
**Roberta Young**  
Painting  
**Tiffany Crisp**  
Mixed Media

07813 169811  
tiffany.crisp@hotmail.com  
www.instagram.com/tiffany\_crisp/  
**EDUCATIONAL-INSTITUTION**



	M	T	W	T	F	S	S
11.00-17.00	20	21	22	23	24	25	26
	27	28	29	30	1	2	3
	4	5	6	7	8	9	10

## 30 The Little Picture Palace

Garden Flat, No 33 York Avenue, Hove BN3 1PJ



Sarah Arnett - Little Picture Palace: Photo: Francine Kay

**Sarah Arnett**  
Fine art prints, wallpaper,  
textiles and clothing  
**Vivienne Ridley**  
Jewellery

**Holly M Atelier**  
Leather bags and accessories  
**Maria Tilyard**  
Cushions

07720 719966  
sarah@saraharnett.co.uk  
www.saraharnett.co.uk

**HOUSE**

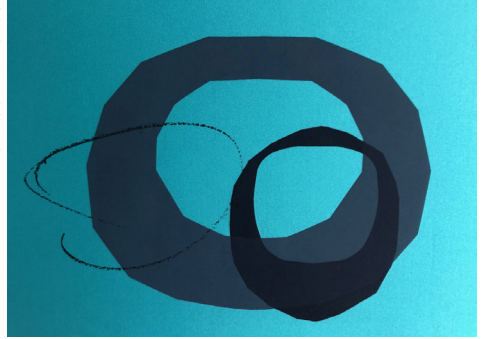


	M	T	W	T	F	S	S
11.00-17.00	20	21	22	23	24	25	26
	27	28	29	30	1	2	3
	4	5	6	7	8	9	10

## 29 Claire O'Hea

2 Windlesham Gardens, Brighton BN1 3AJ

O'Hea's wall paper, Claire O'Hea



**Claire O'Hea** will be showcasing hand printed cushions and silkscreened prints alongside original mixed media works on paper. Mediterranean blues and 'Colour Pop' fuchsia echo themes of summer. Exploring

our connection to nature and the open sea, waters unique ability to understand the meaning behind words and the invisible world that surrounds us. To create a space for this type of conversation through the use of colour and design.

07946182586  
claire.ohea@googlemail.com  
www.instagram.com/claire.ohea

**HOUSE**



	M	T	W	T	F	S	S
11.00-17.00	20	21	22	23	24	25	26
	27	28	29	30	1	2	3
	4	5	6	7	8	9	10

## 31 Cecil Rice

14 Granville Road, Hove BN3 1TG



Pavilion in the snow: Cecil Rice

**Cecil Rice** opens his house this Christmas, with a selection of his latest originals, shoreline and landscape paintings. This festive show will include sparkling smaller works, limited-edition

prints and affordable gift ideas, to suit everyone.

If there's one open house you visit this Christmas don't miss this!

07436 004833  
cecilrice@gmx.co.uk  
www.cecilrice.co.uk

**HOUSE**



	M	T	W	T	F	S	S
11.00-17.00	20	21	22	23	24	25	26
	27	28	29	30	1	2	3
	4	5	6	7	8	9	10

### 32 Salon des Sources

4 Chanctonbury Road, Hove BN3 6EL



White porcelain flower mirror and angel sculpture: Jacqueline Buckeridge

The popular Salon opens its doors once again for its 10th year. With over 20 artists and makers, many items are being made exclusively for the show. Including new limited edition porcelain Christmas decorations by the host Jacqueline Buckeridge, handmade bags by One Of A Kind and fantastic warm quilts from Melanie Hodge. Do come and get your Festive Feels here.



Mosaic Flower: Anna Tilson

**Ceramics**  
**Jacqueline Buckeridge**  
**Barbara Butterworth**  
**Clay for Today**  
**Dulse Ceramics**  
**Yolande Sheppard-Walters**

**Textiles**  
**Halinka Fairies**  
**Helen Dunman**  
**Atelier Bricolage**  
**Susan Kennewell**  
**Melanie Hodge Quilts**  
**One of a kind Bags**

01273 880385  
 jaccards@ntworld.com  
 www.facebook.com/salondessources



**Painting**  
**Stephen Buckeridge**  
**Pru Heath**  
**Philip Dunn**  
**Rowena Hutchinson**

**Jewellery**  
**Fiona Hutchinson**  
**Sarah Packington**  
**Zincy Designs**

**Cards and mosaic**  
**Madame Treacle**  
**Anna Tilson**

								11.00-17.00		
M	T	W	T	F	S	S				
20	21	22	23	24	25	26				
27	28	29	30	1	2	3				
4	5	6	7	8	9	10				

### 33 Art On the Line

10 Highdown Road, Hove BN3 6EE



Interior Art On the Line 222 Kate Strachan

This year, Art On the Line features new contemporary textiles, along with established local artists showing paintings, prints, ceramics, wood and jewellery. Beautiful hand made art and affordable gifts. Expect a warm welcome away from the high street.

**Kate Strachan**  
*Paintings and prints*  
**Emily Jolley** *Paintings and cards*  
**Juliet Walters** *Ceramics*  
**Hawkswellwood** *Wood*  
**Twofolde** *Textiles*  
**Rebecca Angel**  
*Textiles and prints*  
**Tom Lee** *Photography*  
**Katrina Alexander** *Jewellery*

07816 660891  
 katestrachan@mac.com  
 www.katestrachandesign.com



								11.00-17.00		
M	T	W	T	F	S	S				
20	21	22	23	24	25	26				
27	28	29	30	1	2	3				
4	5	6	7	8	9	10				

### 34 The GloopBaah House

22a The Drove, Brighton BN1 5AF



Robin Brush Ink Greeting Card Karen Rao

Festive treats await in our warm and friendly house. Affordable art and handcrafted seasonal gifts with some festive surprises.  
**Sandy Reeves-Walsh**  
*Jewellery and photography*  
**Ros Lymer**  
*Painting, mixed media and textile art*  
**Ali Sivyour** *Wirework*

**Catherine Anna Benson**  
*Engraved glass and seashell jewellery*

**Karen Rao**  
*Felt artist and ink brush art*  
**Felty Jacs** *Christmas crafts*  
**Allison Murphy** *Prints and cards*  
**Chris Hill**  
*Painting and mixed media*

07852 131971  
 sandyglooba@gmail.com  
 instagram.com/sandyglooba



								11.00-16.00		
M	T	W	T	F	S	S				
20	21	22	23	24	25	26				
27	28	29	30	1	2	3				
4	5	6	7	8	9	10				



## 35 The Trojan House

26 Maldon Road, Brighton BN1 5BE

For more than 20 years the popular, friendly Trojan House has been bringing you a magical mix of lovely handmade gifts and unique presents in a relaxed home setting.

Enjoy a warm welcome and a complimentary glass of Pete's delicious mulled wine while browsing creations by your favourite Sussex artists and makers.

Peek into resident artist Troy's workshop and little glass roofed painting studio.

### Troy Ohlson

*Painting, collage, prints and cards*

### Copper Creatures

*Hammered and twisted copper sculpture*

### Jewel Flowers

*Everlasting flower sculptures*

### Primordial Soup

*Art Sock creations*

### Wild Wonder Ceramics

*Animal sculpture*

### J David Bennett

*Colourful pop prints*

*and hand-thrown ceramics*

### Inspired by the Sea

*Needle felting*

### Belinda

*Textile Creations*

### Chapman's Aromatics

*Essential oil delights*

### Glass Follies

*Stained glass*

### Wonderful Wisdom

*Photography, travels and truths*

### Treasures by Troy

*Hand crocheted silver and gem jewellery*

Free parking on weekends



Hand Crochet Sterling Silver & Gem Jewellery: Troy Ohlson



Travel is the bridge, Florence: Wonderful Wisdom



Unicorn Santa Christmas Card: Troy Ohlson



Hand Crochet Copper Butterfly: Troy Ohlson

07885 911049  
troyohlsonart@gmail.com  
www.trojanhouse.com

### HOUSE



11.00-17.00

M	T	W	T	F	S	S
20	21	22	23	24	25	26
27	28	29	30	1	2	3
4	5	6	7	8	9	10

## 36 For The Man I Love

13 Maldon Road, Brighton BN1 5BD

For The Man I Love



**Nicky** Painting  
**Linda** Chocolates  
**Lauren** Illustration  
**Adam** Leather  
**Roger** Turned wood  
**Lucy** Candles  
**Susan** Felt  
**Marion** Glass  
**Corrina** Textiles  
**Katie** Textiles  
**Hannah** Graphics  
**Emma** Cat products  
**Christine** Ceramics  
**Mr Beaujangles**  
 Jewellery  
**Lionel** Letterpress  
**Jay** Preserves

Welcome back to our home for the fifth year. As usual we have a huge selection of local artisans from all over Sussex covering a wide range of gifts for the festive season.

Free welcome drink

07736 656049  
 orders@beaujangles.com  
 www.forthemanilove.com

HOUSE



							11.00-17.00	
M	T	W	T	F	S	S		
20	21	22	23	24	25	26		
27	28	29	30	1	2	3		
4	5	6	7	8	9	10		

## 37 Wits' End

40 Robertson Road, Brighton BN1 5NJ



Festive Rankins with Parsnip Rachel Rankin

Come to Wits' End and join Robert (novelist and illustrator) and his lovely wife Rachel-Raygun (musician, part-time mermaid and mixed media artist) for a glass of mulled wine and

a mince pie. Browse Robert's books, posters and related ephemera and Rachel's ceramics, fabric creations, jewellery, Christmas decorations and much more.

07811 208926  
 rachel@steelpan.co.uk  
 robert-rankin.myshopify.com/

HOUSE



							11.00-17.00	
M	T	W	T	F	S	S		
20	21	22	23	24	25	26		
27	28	29	30	1	2	3		
4	5	6	7	8	9	10		

## 38 IN Design Kitchens & Living Spaces by Iren

3 Lowther Road, Brighton BN1 6LF



IN Design Kitchens - A kitchen is at the heart of the home

We at IN Design Kitchens are delighted to be hosting our first open house, exhibiting the creativity and artwork of carefully selected artists within our beautiful kitchen art-space. We design kitchens and interiors that contrive to celebrate individual style and lifestyle.

We are passionate about creating unique spaces by providing comprehensive designs for your space.

In our open house we are proud to show the quality of IN Design products along with the artists' work, which will be available to view and buy during the event.

Also open weekdays by appointment.

01580 389441  
 iren@indesign.kitchen  
 www.indesign.kitchen

HOUSE



							11.00-16.00	
M	T	W	T	F	S	S		
20	21	22	23	24	25	26		
27	28	29	30	1	2	3		
4	5	6	7	8	9	10		

## 39 Brighton Etsy @ Starling Studio

107 Havelock Road, Brighton BN1 6GL



Brighton Christmas Bauble: Martha Mitchell/Design

After the roaring success of our May Artist's Open House, Brighton Etsy are setting up shop again this November in Starling Studio for the AOH Winter Festival!

With a selection of local designer-makers from the

Brighton Etsy Team, we will be open one weekend only, 25th and 26th November. We'll be packed to the rafters with giftable goodies such as candles, craft kits, homewares and jewellery, so you can get ahead on your Christmas shopping!

brightonetsyteam@gmail.com  
 brightonetsyteam.wordpress.com/  
 www.instagram.com/brightonetsy/

STUDIO-OR-WORKSHOP



							11.00-17.00	
M	T	W	T	F	S	S		
20	21	22	23	24	25	26		
27	28	29	30	1	2	3		
4	5	6	7	8	9	10		



## 40 Milton House

72 Clyde Road, Brighton BN1 4NP



**Sarah Jones** Prints  
**Lucky Stitch** Creative knit  
**Nikki Ward** Paper sculpture  
**Chalk & Flint** Ceramics  
**Lesley Bisseker** Cushions  
**Madame Treacle** Cards and gifts  
**LuLu McQueen** Jewellery  
**Under Wraps** Art T-shirts

**Handmade & Vintage**  
 Decorations and collectables  
**Jennie Edwards**  
 Screen printed textiles  
**Sal Goodyer** Leather and textile  
**Phoebe Sherwood** Jewellery  
**Jubal Prevatte** Turned wood

Milton House Artists (and Percy the cat)

07815208755  
 sarahjonesprints@gmail.com  
 @miltonhousebrighton



							11.00-17.00	
M	T	W	T	F	S	S		
20	21	22	23	24	25	26		
27	28	29	30	1	2	3		
4	5	6	7	8	9	10		

## 41 The Shaftesbury Collective

28 Shaftesbury Road, Brighton BN1 4NF



From the terrace: Lucy Cooper

Welcome back to the Shaftesbury Collective!

Come and browse contemporary ceramics, silver jewellery, original silkscreen prints, joyful paintings and greetings cards - all in a relaxed and spacious setting.

07775 897628  
 lucycooper20@gmail.com  
 www.lucycooperprints.com



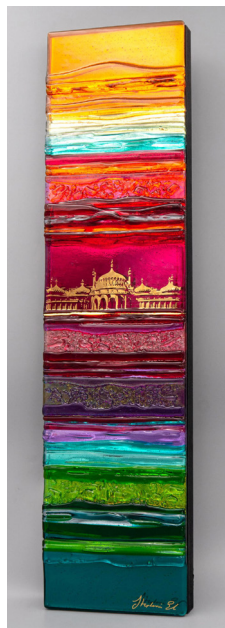
**Lucy Cooper**  
 Fine art prints  
**Hattie Gordon**  
 Illustrations, prints and cards  
**Alison Crowe**  
 Silver and gemstone jewellery  
**Rosie Adamson**  
 Contemporary ceramics

11.00-17.00

M	T	W	T	F	S	S		
20	21	22	23	24	25	26		
27	28	29	30	1	2	3		
4	5	6	7	8	9	10		

## 42 Glass In Fusion

Unit 9 Beaconsfield Studios, 25 Ditchling Rise, Brighton BN1 4QL



Brighton Royal Pavilion - Sculptured Glass Panel: Stephanie Elise Glass In Fusion

A fabulous glass studio showcasing an array of vibrantly beautiful glass artworks, gifts and jewellery.

On display will be award-winning glass panels and iconic Brighton In Glass framed tiles, plaques and coasters. Fantastic gift ideas for everyone including shimmering glass snowflakes and festive trinkets.

Come and be bedazzled!

**Stephanie Elise** Glass

07887975818  
 stephanie@glassinfusion.co.uk  
 www.glassinfusion.co.uk

STUDIO-OR-WORKSHOP



							11.00-17.00	
M	T	W	T	F	S	S		
20	21	22	23	24	25	26		
27	28	29	30	1	2	3		
4	5	6	7	8	9	10		



## 43 New England House Open Studios

New England Street, Brighton BN1 4GH



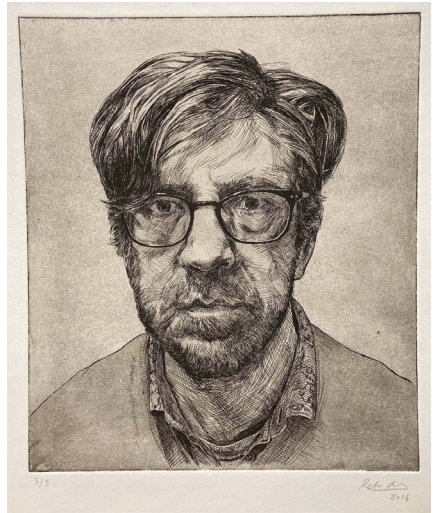
Mushrooms: Francesca Cluney

The largest Christmas Open House in town opens its doors again for one weekend only! New England House artists, makers and their guest exhibitors invite you to their open studios and corridor stalls for an exciting Christmas browse.

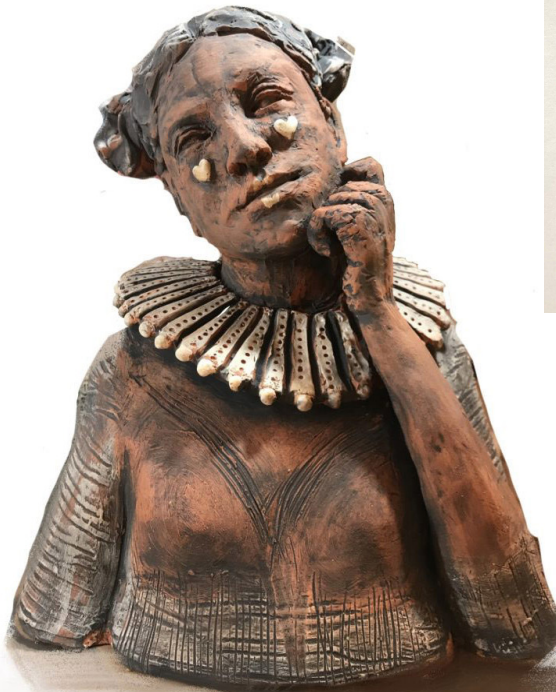
Ceramics, jewellery, paintings and prints, knits, clothing, fabric, cards, posters and knick-knacks – bargains and Christmas present ideas galore. Exhibitors include old favourites and new surprises! **Open Friday 8th – Sunday 10th December only.**



Satellite ring: Tanja Ufer



John: Peter James Field



Woman with Ruff: Linda Finch

07962615445  
[openstudiosneh@gmail.com](mailto:openstudiosneh@gmail.com)  
[nehopenstudios.org.uk](http://nehopenstudios.org.uk)  
**STUDIO-OR-WORKSHOP**



11.00-18.00

M	T	W	T	F	S	S
20	21	22	23	24	25	26
27	28	29	30	1	2	3
4	5	6	7	8	9	10

## 44 Rose Hill Court

Rose Hill Court, Rose Hill Terrace, Brighton BN1 4HS



Stormy Brighton: Joe

This exhibition features work created by a collective of artists who live at Rose Hill Court Seniors Housing.

Each weekend we will be holding artist-led workshops open for visitors to attend.

claine.copper@gmail.com

12.00-16.00

### COMMUNITY



M	T	W	T	F	S	S
20	21	22	23	24	25	26
27	28	29	30	1	2	3
4	5	6	7	8	9	10

## 46 Pottery Gagliano

16-30 Hollingdean Road, Brighton BN2 4AA



Raku vase by Roberto Gagliano: Roberto Gagliano

Come and be captivated by the artistry of our talented and innovative ceramicists as they bring clay to life.

Witness the magic of their hands at work and gain insights into the intricate process of crafting ceramics that tell stories.

Each piece is a testament to the passion and dedication of our ceramicists.

07789 997361

contact@potterygagliano.co.uk

www.potterygagliano.co.uk

### STUDIO-OR-WORKSHOP



**Adam Ceramic**  
**Marcella Todaro**  
**Roberto Gagliano**  
**Tanya Gomez**  
**The Pilgrim Potter**

Raku firing demonstration.  
Check our Social Media for date and time.

11.00-17.00

M	T	W	T	F	S	S
20	21	22	23	24	25	26
27	28	29	30	1	2	3
4	5	6	7	8	9	10

## 45 Studio 27

27 Park Crescent Terrace, Brighton BN2 3HD

Studio 27 is a shared workshop and studio for artists and makers. This year we will be showing a wide selection of paintings, prints, jewellery, ceramics, upholstered seating, homeware and bespoke furniture. Resident

artists listed below but we will have more exhibiting artists during the show.

**Relove Stuff**  
**Kathryn Lang**  
**Born Makers**



Vernaculus & chair: Kathryn Lang / Relove Stuff / Born Makers



Corner table: Born Makers / Relove Stuff

07732 854324

10.00-16.00

### STUDIO-OR-WORKSHOP



M	T	W	T	F	S	S
20	21	22	23	24	25	26
27	28	29	30	1	2	3
4	5	6	7	8	9	10



# 47 Yvonne Coomber

57 Washington Street, Brighton BN2 9SR

I Love You With All My Heart" Yvonne Coomber



You Have My Heart Forever" Yvonne Coomber



I Have Spread My Dreams Under Your Feet" Yvonne Coomber



Internationally acclaimed artist **Yvonne Coomber** creates a joyful, rainbow drenched dance around the canvas.

Her pieces are held in collections nationally and worldwide. She is a renowned ambassador for the protection of wildflowers and has collaborated with many charities and organisations including The Eden Project, the BBC and The National Trust. Her work is full of raw emotion and energy; it has an untamed wildness.

Speaking of her paintings she says, "I am both a romantic and a believer. I work intuitively, creating a space in which I allow the image to evolve and unravel. My practice demands that I am openhearted and it always involves risk. It is an eternal search for truth. I feel things with a burning intensity and my canvas provides a container for these huge emotions. My work sings of tumbling hedgerows, tangled meadowlands and open moorlands. It is my intention is to transport the viewer to a place that is literally saturated in joy. Where dreams are born.

Highest quality oil paints are applied in a multitude of layers. The alchemy of techniques result in a kaleidoscopic jewel-like composition of rich pigments that reveal the radiance of nature, I always work outside and the elements, in a very direct way, dictate how and where the paint falls. Lacy ice and strong winds have as much influence on the final painting as golden sunshine and gentle breezes.

I pour my heart and soul into each image and the canvas sparkles with love. Ultimately my practice is a prayer and a surrender. A place where the mystery unfolds. My paintings are a celebration of all that is good in the world."

A must see!



Let the Mystery In: Yvonne Coomber

07779 058735  
[info@yvonnecoomber.com](mailto:info@yvonnecoomber.com)  
[yvonnecoomber.com](http://yvonnecoomber.com)

HOUSE



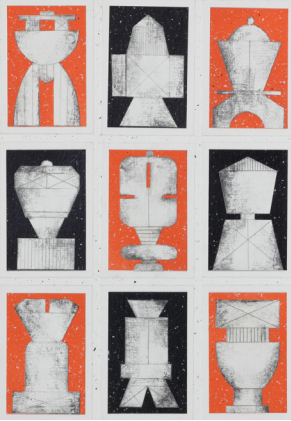
10.30-16.30

M	T	W	T	F	S	S
20	21	22	23	24	25	26
27	28	29	30	1	2	3
4	5	6	7	8	9	10



## 48 The Studio Upstairs – Atelier 51

Atelier 51, 51 Providence Place, Brighton BN1 4GE



Totems 2: Rhoda K Baker

Atelier 51 is located in a Victorian warehouse by the magnificent St. Bartholomew's Church, behind the London Road. Artist Rhoda K Baker is opening The Studio Upstairs for an eclectic show from professional artists and makers. Expect to see a variety of truly unique works in various media, an absolute visual treat! Nice wood burner and doggie, Dot!

**Rhoda K Baker**

Mixed media

**Francis Bloomfield (and Dot)**

Mixed media

**Helen J Holroyd**

Print making

**Judy Dwyer**

Mixed media

**Sarah Young**

Mixed media

11.00-17.00

07815 021354

rhodakbaker@gmail.com

instagram.com/rhoda\_k\_baker

STUDIO-OR-WORKSHOP



M	T	W	T	F	S	S
20	21	22	23	24	25	26
27	28	29	30	1	2	3
4	5	6	7	8	9	10

## 50 Stanley Road Store: Rebel Room

54-55 Market Street, Brighton BN1 1HH



So what cha want: G\_Wizz\_Wheeler

Amongst all the usual creative gems in store, there is a temporary rebellious room installation curated by G\_Wizz\_Wheeler, titled So what'cha want?

Originals, prints, ceramics, homeware, clothing and cut-outs with a retro punky

aesthetic, by 10 predominantly Sussex creatives and street artists: **G\_Wizz\_Wheeler, Kateamonstrous, Bobby Dazzler, The Oogazoid Library, Sweatflix, Sophie Malpas, Yates Zero, Neonita\_Mcmonster, Prototypetm\_art and Suzkoart.**

A spectacle not to be missed.

11.00-18.00

07931 224449

hello@stanleyroadstore.com

www.stanleyroadstore.com

COMMERCIAL-PREMISES



M	T	W	T	F	S	S
20	21	22	23	24	25	26
27	28	29	30	1	2	3
4	5	6	7	8	9	10
11	12	13	14	15	16	17

## 49 Jules Emporium

5 New Road, Brighton BN1 1UF



A selection from Jules Emporium

Recently established on New Road, Jules Emporium is a boutique gallery and shop offering up a mix of original art, prints and unique gift ideas. Discover a selection of jewellery, candles, cards, vintage apparel, accessories, clothing and homeware, plus a touch of the curios over three rooms.

Showcasing artists and makers from Brighton and beyond, Jules Emporium has been carefully curated to exhibit an amazing wealth of talent in the heart of Brighton's cultural quarter.

julesemporium@outlook.com

@jules\_emporium

10.00-17.00

GALLERY



M	T	W	T	F	S	S
20	21	22	23	24	25	26
27	28	29	30	1	2	3
4	5	6	7	8	9	10
11	12	13	14	15	16	17

## 51 HAUS of KAKA

7 Bartholomews, Brighton BN1 1HG



Vanity and Despair No: Karl Francis Allen

Comedic illustration, irreverent playful caricatures, social commentary, ceramics transformed, monsters, manic and playful exuberance can be found in this quirky grade two listed house steps from Brighton pier.

**Karl Allen**

**Haus of Lucy**

**Bruno Sibona**

**Saint Sims**

**Cathy Page**

**Tristan Lathey**

**Mike Pop**

07563 076224

filmwerq@gmail.com

www.karllienart.com

HOUSE



11.00-18.00

M	T	W	T	F	S	S
20	21	22	23	24	25	26
27	28	29	30	1	2	3
4	5	6	7	8	9	10

## 52 Faye Bridgwater

10 Dawson Terrace, Brighton BN2 0EL



Playtime: Faye Bridgwater (Photo: André Lichtenberg)



Expand Your Horizon - Limited Edition Print: Faye Bridgwater



A selection of greetings cards: Faye Bridgwater



In my studio with original paintings in progress: Faye Bridgwater

Welcome Back! I will be throwing open my door and welcoming you to my home again. I know everyone is always curious about my studio so I promise to have a tidy up so you can have a peek in there too!

I've had a great year exhibiting in exciting venues and painting a massive Shaun the Sheep for Martlets Hospice for their Shaun by the Sea Trail.

This Winter, I will be exhibiting a new collection of original contemporary paintings of vibrant landscapes and bold florals for you. These are always available to my mailing list prior to opening the exhibition so make sure you sign up :)

As well as my originals, my hand finished limited edition prints and my ever so popular greetings cards will be available, along with my exciting new product: Sketch Squares, a wonderful tool for every artist.

I will be open from 10am until 5pm on the first two weekends of Artists Open Houses. I will also be available at other times for private appointments so please email me if you would like to visit in the week. I can't wait to see you and show you my new paintings.

### Faye Bridgwater Painting

07811 967257  
[faye@fayebridgwater.com](mailto:faye@fayebridgwater.com)  
[www.fayebridgwater.com](http://www.fayebridgwater.com)

### HOUSE



Weekends 10.00-17.00  
 Open in the week by appointment

M	T	W	T	F	S	S
20	21	22	23	24	25	26
27	28	29	30	1	2	3
4	5	6	7	8	9	10



## 53 Debbie Lawrence

204 Freshfield Road, Brighton BN2 9YD



*Empathy is a journey you travel.* Debbie Lawrence

Visit the home of **Debbie Lawrence**, Brighton-based painter and skilful colourist. Be the first to see her new collection of joyful paintings.

Themes often include: Brighton, sea swimmers, her love of plants and remembered landscapes.

Expect exclusive works on paper, limited edition prints, small gift ideas and originals.

Festive refreshments and tipples available

07919 115492  
debbielawrenceartist@icloud.com  
instagram/@debbielawrenceartist

HOUSE



		10.00-17.00						
M	T	W	T	F	S	S		
20	21	22	23	24	25	26		
27	28	29	30	1	2	3		
4	5	6	7	8	9	10		

## 54 The Villa Studio

11 Walpole Terrace, Brighton BN2 0EB

Staring Worker: Matthew Cattell



The Villa Studio is delighted to be part of this Christmas event. Our offer includes ceramics, glass fusion artwork, designer felt shawls and brooches, illustrations, landmark prints, homeware, sculpture, and enamels. There are some great discounts available and free gift wrapping.

Artists include: **Matthew Cattell, Juliet Walters, Philip Dunn, Ilona Drew, Stephanie Else, Ulrika Jarl and Mirka Nowysz.**

We look forward to welcoming you at The Villa Studio.

07792 489748  
diana.thevilla@gmail.com  
www.thevillastudio.co.uk

HOUSE



		12.00-16.00						
M	T	W	T	F	S	S		
20	21	22	23	24	25	26		
27	28	29	30	1	2	3		
4	5	6	7	8	9	10		

## 55 House of Pop!

Flat 1, 27 New Steine, Brighton BN2 1PD



*Brighton Bombshell.* Dave Pop!

**Dave Pop!** is a Brighton based artist creating traditional fairground style art with a generous topping of seaside sauce! Original paintings, prints, t-shirts, mugs, Tiki mugs, towels and other gifts.

07902 397133  
dave@davepopart.com  
www.davepopart.com

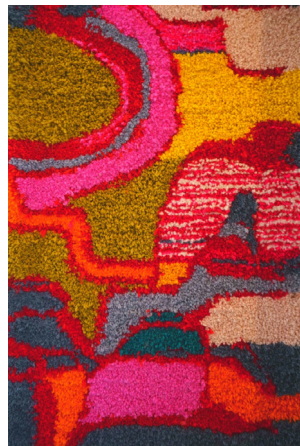
HOUSE



		11.00-18.00						
M	T	W	T	F	S	S		
20	21	22	23	24	25	26		
27	28	29	30	1	2	3		
4	5	6	7	8	9	10		

## 56 12 Lewes Crescent

Flat 1, 12 Lewes Crescent, Brighton BN2 1FH



*Other rainbows.* Catherine Grimaldi

**Catherine Grimaldi** warmly welcomes you into her home to view new paintings and textiles. Catherine trained at Central St Martins and enjoys exploring a range of mediums. She is inspired by Outsider Art, camper vans, Betty and Percy the Norwegian Forest cats, trees and swimming.

**Richard Norbury** will also be showing his travel photography. Refreshments provided by Hawk Coffee.

catherine.grimaldi@gmail.com  
Insta: catherine.grimaldi

HOUSE



		11.00-17.00						
M	T	W	T	F	S	S		
20	21	22	23	24	25	26		
27	28	29	30	1	2	3		
4	5	6	7	8	9	10		



## 57 Understory: Jennifer Kaye

4 Church Place, Kemptown, Brighton BN2 5JN



The Edge of Understanding: Jennifer Kaye

**Understory:** championing local artists and makers.

**Jennifer Kaye:** an artist based in Brighton, specialises in oil painting, with a profound love for the ocean and the female form. Her art captures the serenity of tranquil oceans and the dynamism of

crashing waves. Simultaneously, she celebrates the remarkable blend of strength and grace in women, showcasing their unique beauty through her work. Jen offers both prints and originals, enabling everyone to incorporate her artistry into their lives.

07890 652 382  
jennifer.alice.kaye@gmail.com  
jenniferkaye.co.uk

COMMERCIAL-PREMISES



11.00-16.00

M	T	W	T	F	S	S
20	21	22	23	24	25	26
27	28	29	30	1	2	3
4	5	6	7	8	9	10

## Why not take part next May?

If you live in the Brighton and Hove area, you can open your house to take part in the Artist Open Houses festival.

To find out how to get involved, including how to join a local trail, have a look at the 'Artists info' section of our website:

<https://aoh.org.uk/artists-info-2/>

You can also take part if you live outside the area, by becoming a guest artist exhibiting in someone else's Open House. For more information visit:

<http://artists-seeking-houses.aoh.org.uk/>

Registration for the May Artists Open Houses will open online in early January?

## Events in Open Houses

Some Open Houses offer you the chance to explore your creative side through hands on workshops and other events.

For all event information see the Events page of the AOH website: [www.aoh.org.uk/events](http://www.aoh.org.uk/events)

## 58 Kate Jenkins Studio

Unit 5 Arundel Mews, 13-18 Arundel Place, Brighton BN2 1GG



Cake Wreath: Kate Jenkins



Knitmas Dinner: Kate Jenkins

Welcome to the wonderful world of international textile artist

**Kate Jenkins.** Expect to find a gorgeous and inspiring collection of knitted and crocheted framed art, cards, prints scarves and lots more.

01273 671390  
info@katejenkinsstudio.co.uk  
www.katejenkinsstudio.co.uk  
STUDIO-OR-WORKSHOP

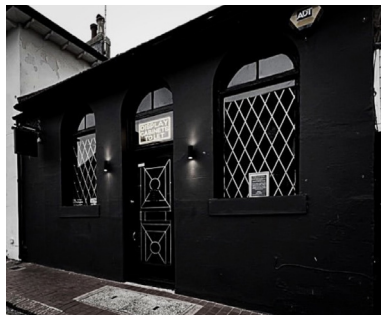


10.30-16.30

M	T	W	T	F	S	S
20	21	22	23	24	25	26
27	28	29	30	1	2	3
4	5	6	7	8	9	10

## 59 The Chapel

29 Park Road, Rottingdean, Brighton BN2 7HL



The Chapel

**Liza Morton** *Ceramics*  
**David Rees** *Mixed media*  
**Tom Cotcher** *Painting*  
**Dave Pop** *Painting*  
**John Bullock** *Painting*  
**Helena Sivakova** *Painting*  
**Patrick Mills** *Turned wood*

**Michael Roberts** *Painting*  
**Lorraine Chambers** *Painting*  
**Mike Thorn** *Painting*  
**Wendy Grange** *Painting*  
**Lorraine Hayes** *Painting*  
**Alex Baxter** *Furniture*  
**Matthew Alker** *Painting*

Sa 10.00 - 17.00, Su 11.00 - 16.00  
 Mo-Fri 10.00 - 16.00

M	T	W	T	F	S	S
20	21	22	23	24	25	26
27	28	29	30	1	2	3
4	5	6	7	8	9	10
11	12	13	14	15	16	17

07873181513  
 thechapelrottingdean@gmail.com  
 www.thechapelrottingdean.co.uk

GALLERY



## 60 Pruden and Smith

Pruden and Smith, 2 South Street, Ditchling BN6 8UQ



Organic Two Strand Diamond Sapphire Bubbles Ring: Pruden and Smith

The gallery and workshop of Pruden and Smith are located on the crossroads at the heart of the Arts and Crafts village of Ditchling. For over 30 years Pruden and Smith's Creative Director Rebecca Smith has been designing unique jewellery using recycled gold, silver, platinum, and unusual gemstones from all over the world. Her recent

collections are inspired by the natural landscape of the Sussex Coast.

For the AOH 2023 Winter festival, Pruden and Smith's team of skilled craftspeople have been busy creating handmade jewellery using rough diamonds and multi coloured sapphires. During your visit why not take

## 61 Helen Twigge-Molecey

Abberton House, 6 Hassocks Road, Hurstpierpoint BN6 9QN



Fungi: Helen Twigge-Molecey (Photo: Sylvain Deleu)

Welcome to my glassblowing studio, where you'll find unique pieces from colourful glasses and vases to fungi-inspired sculptures.

I'm a multi-award-winning artist and designer who exhibits internationally and will be opening my studio for the first time.

07976 366880  
 helen@twiggemolecey.com  
 www.helentwiggemolecey.com

STUDIO-OR-WORKSHOP



11.00-17.00

M	T	W	T	F	S	S
20	21	22	23	24	25	26
27	28	29	30	1	2	3
4	5	6	7	8	9	10



Sapphire Wave Earstuds: Pruden and Smith



a tour of their workshop to learn about the materials, techniques, and processes used to create their distinctive work. During your tour

you will also discover how to recycle your old unworn jewellery into something new using their redesign service.

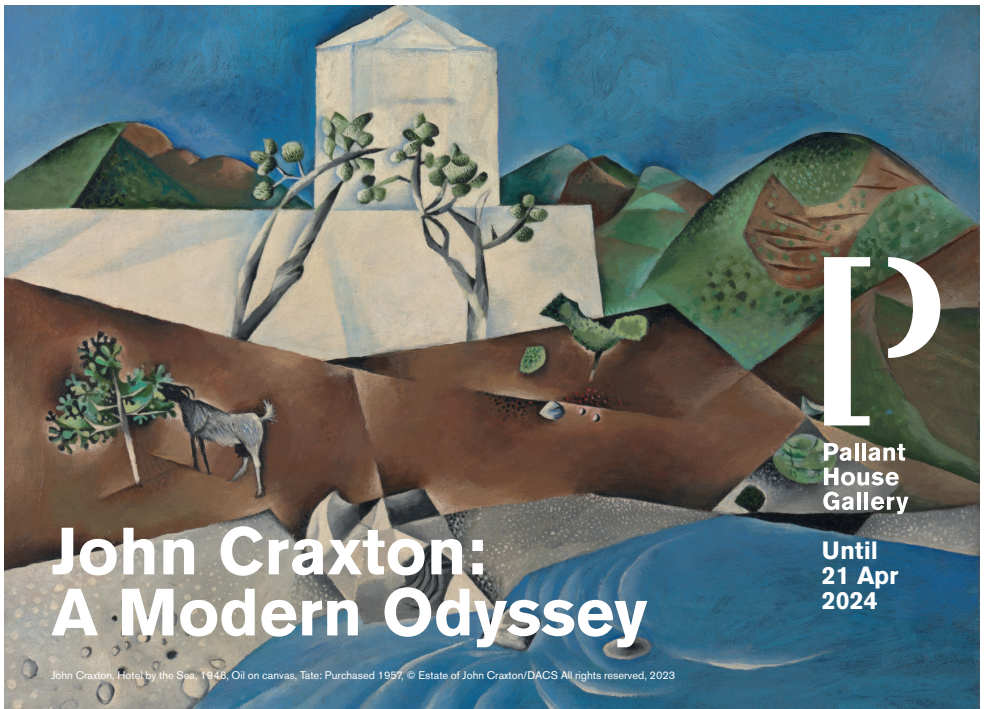
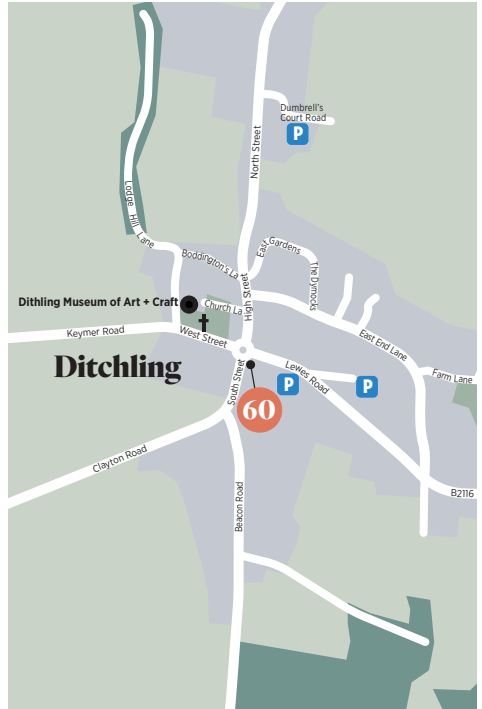
01273846338  
 hello@prudenandsmith.com  
 www.prudenandsmith.com

STUDIO-OR-WORKSHOP



Mo - Sa 10.00 - 17.00, Su 11.00 - 16.00

M	T	W	T	F	S	S
20	21	22	23	24	25	26
27	28	29	30	1	2	3
4	5	6	7	8	9	10
11	12	13	14	15	16	17



D

Pallant House Gallery

Until 21 Apr 2024

# John Craxton: A Modern Odyssey

John Craxton, Hotel by the Sea, 1946, Oil on canvas, Tate: Purchased 1957, © Estate of John Craxton/DACS All rights reserved, 2023



# FRAME FACTORY

High quality contemporary  
framing & giclée printing

## Framing

Bespoke framing  
Exhibition framing

Mount cutting

Canvas stretching

Box framing

Friendly professional advice

## Printing

Large format printing

Printing onto canvas

Limited edition giclée printing

01273 609207

[www.frame-factory.co.uk](http://www.frame-factory.co.uk)

[info@frame-factory.co.uk](mailto:info@frame-factory.co.uk)

7 Sydney Street, Brighton, East Sussex,  
BN1 4EN



## Why not take part next May?

If you live in the Brighton and Hove area, you can open your house to take part in the Artist Open Houses festival.

To find out how to get involved, including how to join a local trail, have a look at the 'Artists info' section of our website:

<https://aoh.org.uk/artists-info-2/>

You can also take part if you live outside the area, by becoming a guest artist exhibiting in someone else's Open House. For more information visit:

<http://artists-seeking-houses.aoh.org.uk/>

Registration for the May Artists Open Houses will open online in early January?

## Events in Open Houses

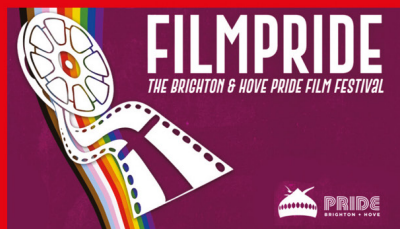
Some Open Houses offer you the chance to explore your creative side through hands on workshops and other events.

For all event information see the Events page of the AOH website: [www.aoh.org.uk/events](http://www.aoh.org.uk/events)

# film festivals from

# latest

# we've got it covered!



365 days a year - 24 hours a day

freeview 7 ■ virgin media 159 ■ [thelatest.co.uk](http://thelatest.co.uk)

BRIGHTON MUSEUM  
& ART GALLERY

Self portrait (with headband), Lee Miller Studios, Inc., New York, USA 1932 by Lee Miller  
© Lee Miller Archives England 2023. All Rights Reserved. www.leemiller.co.uk

# Lee Miller: Dressed

14 October 2023 to 18 February 2024



BRIGHTON  
& HOVE  
MUSEUMS



Supported using public funding by  
ARTS COUNCIL  
ENGLAND



[brightonmuseums.org.uk](http://brightonmuseums.org.uk)





CHARLESTON

# David Hockney

## Love Life

23 September 2023 – 10 March 2024

A collection of rarely-seen drawings  
by one of our most loved artists.

[charleston.org.uk](http://charleston.org.uk)

THE  
HOLBURNE  
MUSEUM

Exhibition organised by the Holburne Museum, Bath

→ Firle  
Firle, BN8 6LL



# The magical winter lantern trail

23 November 2023 – 1 January 2024

Under 4s  
go free!

New trail,  
exclusive art!

# Glow Wild



# Wakehurst

35 minutes from Brighton. Opening week promotion  
and flexi tickets available [kew.org/glowwild](https://www.kew.org/glowwild)

Royal Botanic Gardens  
**Kew**

Proud To Support

**{ THE ARTIST  
OPEN HOUSE  
FESTIVAL }**



**Hamptons**  
THE HOME EXPERTS

HAMPTONS.CO.UK

Supporting Local Artists

**LAWRENCE**  
ART SUPPLIES SINCE 1859

Discover Lawrence Art Shop in Hove...  
you'll find top quality artists' materials and equipment from around the world.



208-212 Portland Road, Hove, BN3 5QT  
01273 260280  
(Free customer car park at rear of shop)  
[www.LAWRENCE.co.uk](http://www.LAWRENCE.co.uk)

[f](#) [t](#) [p](#) [w](#)



**GROUND UP**  
M E D I A

[www.groundupmedia.co.uk](http://www.groundupmedia.co.uk)  
[info@groundupmedia.co.uk](mailto:info@groundupmedia.co.uk)

Advertising Agency For Entertainment & Culture

Proud Supporters of Artists Open Houses

# GICLEE EXPRESS

360 Artist Development Consultants for Creative Sparks



*Art Printing / Eco-Framing  
Branding / Web Design / Marketing  
Organic Garment Printing*



*Proud to support Artists Open House  
15% off your 1st order: Hello15%off*

8 Bond Street, North Laine, Brighton, BN1 1RD. (above Shakeaway)  
Enquiries: 07980 271563 / [info@gicleeexpress.com](mailto:info@gicleeexpress.com) / [gicleeexpress.com](http://gicleeexpress.com)

We are  
*Refreshing*

## Artists Open House Sponsors & Print Partner 2023

From creative design concepts to  
quality art printing, order fulfilment,  
and mailing campaigns.

Talk to the team of experts  
who can help you.



Contact us on:  
t: 01273 464 884  
e: [hello@gemini-print.co.uk](mailto:hello@gemini-print.co.uk)  
e: [hello@reamcreative.com](mailto:hello@reamcreative.com)







Tutton & Young

present

# MADE BRIGHTON

THE DESIGN CRAFT & PRINTMAKING FAIR

24- 26 NOVEMBER 2023

BRIGHTON DOME  
CORN EXCHANGE

[WWW.MADEBRIGHTON.CO.UK](http://WWW.MADEBRIGHTON.CO.UK)





**BRIGHTON  
GIRLS**

GDST

*Who teaches Robotics  
from Reception?*



**BRIGHTON GIRLS**  
**WEEKLY WEDNESDAY TOURS**





Visit our shop in the Heart of Brighton's North Laine

# Contemporary Handmade Jewellery



- Heirloom quality jewellery
- Bespoke design service
- Remodelling, repairs & alterations

[www.julianstephens.com](http://www.julianstephens.com)

## **NORTH LAINE JEWELLERY SCHOOL**

Learn To Make Jewellery Here

[www.northlainejewelleryschool.com](http://www.northlainejewelleryschool.com)

Evening classes and short courses

Visit us at:

37 GLOUCESTER ROAD

BRIGHTON BN1 4AQ

**TEL: 01273 692110**