

Artists Open Houses

November 23rd to December 8th

XMAS 2019





Who ^{would} send a 6 year old
to the moon?



**BRIGHTON
GIRLS**

GDST

There's nothing quite like Brighton Girls. Why not find out for yourself at our 'Open Doors', available for girls aged 3-18, and happening throughout the year.
brightongirls.gdst.net

AOH would like to thank
all our sponsors and supporters



Victor Boorman & Co.



Contents

About Christmas Open Houses 2019	3
Travel	4
Venues 1-32 (Hove and Brighton)	5
Key to symbols	15
Brighton and Hove map	16
Venues 33-56+60 (Brighton and Kemptown)	18
Venues 57-59 (Rottingdean, Saltdean and Ditchling)	26

AOH Team

- Judy Stevens – Festival Director
- Chris Lord – Design, Development and Marketing Director
- Fiona McTernan – Festival Manager, Ads and Sponsorship
- Lisa Yousefi – Social Media
- Claire Quigley – Finance
- Idil Bozkurt – Photography and Projects

AOH Associates

- Pandora George, Bullet PR – PR Media Campaign
- Tim Jukes – Web Design and Development
- Paul Clark – Distribution
- Partners: The Latest, Viva

Cover Illustration:

I Saw Three Ships by Judy Stevens

Design: Graphic Detail: info@graphicdetail.co.uk

Print: Gemini Press

Artists Open Houses Ltd is a not for profit company.

Registration no. 5420675 (England and Wales)

Disclaimer: Whilst every care has been taken to ensure that the information given in this publication is accurate at the time of going to print, AOH cannot be held responsible for any variations, errors or admissions of which we have not been advised. We recommend that visitors confirm details for individual venues online before setting out. No recommendation is implied in any of the listings. Under no circumstances can AOH accept responsibility for any loss, damage or injury sustained by any member of the public visiting the Artists Open Houses festival.





Discover Independent Shopping in Worthing this Christmas

Colonnade House · West End Gallery · East Beach Artists Studios
The Forge Gallery · Worthing Museum & Art Gallery and more

Meet local artists and buy unique handmade items this festive season
from Christmas markets, pop up shops, studios and galleries

Find more information on festive gifts at

discoverworthing.uk

The official tourism guide to Worthing



WORTHING BOROUGH
COUNCIL



Discover
Worthing

Images left to right: Peon Boyle, Hello Dodo, Sarah Sepe

Artists Open Houses

November 23rd to December 8th

XMAS 2019

The festive season is just around the corner and all over Brighton, Hove and beyond artists are opening their front doors. This Christmas 60 Open Houses invite you inside to browse, shop and mull, over a warming glass of mulled wine and a mince pie.

The Christmas Artists Open Houses create a special atmosphere, where you can chat to artists and makers in their homes and studios, whilst viewing a spectacular selection of individual, hand-made arts and crafts. Don't miss a lounge filled with Christmas tees, decorated with ceramic flowers and crocheted brussel sprouts! See locally sourced pheasant feathers transformed into glamorous festive headdresses! While children can print their own T-shirts, visit a Santa's Grotto and decorate some gingerbread.

The festival is also a community event and includes artists with learning disabilities, artists who have experienced periods of homelessness and a group representing creative ageing activities, alongside established, professional artists and makers, as well as young and emerging artists.

The Christmas Artists Open Houses festival provides a fantastic opportunity to shop away from the High Street and buy unique Christmas gifts in inspiring environments. Kick off the festive season by picking up unique and original Christmas gifts for friends, family - or for yourself!

Don't forget to visit: www.aoh.org.uk where you can find out more about the Artists Open Houses. You will also find links to many of the artists' and makers' own websites.

Venue Opening times

Be sure to check opening times of all Open Houses in their individual listings. Although the most popular opening times are between 11am and 6pm, Saturdays and Sundays, some venue opening times and days may differ.

Paying for Purchases

Many Open Houses take card payments - but remember to check out your AOH brochure for payment symbols in each venue listing - and take a cheque book and /or cash to be on the safe side!

Access

The majority of houses are ordinary homes and may not have disabled access. Please check with venues individual brochure listings, and take a look at our 'disabled access' website section.



Travel information

Bus

www.buses.co.uk

Travelling around the city to the Artists Open Houses couldn't be easier with the m-ticket app. For just £4.90 a day you can have unlimited travel on any Brighton & Hove Bus, including night buses. Tickets are available 24/7 and can be purchased to travel immediately or saved until later. Simply buy and activate your ticket, show the driver and away you go. Download the app from Google Play or Apple App Store now.

Rail

www.nationalrail.co.uk

Bike Share Scheme

www.btnbikeshare.com

The system uses SoBi smartbikes, which are available for hire in central Brighton & Hove stretching along Lewes Road towards Brighton University and the University of Sussex. For any enquiries about using the scheme please contact support@BTNBikeshare.com or call 01273 978096.

Cars and Parking

www.brighton-hove.gov.uk/content/parking-and-travel/parking

Brighton & Hove City Council operates several off-street car parks and numerous on-street pay & display parking spaces across the city. Most on street parking is now pay by phone. You will need to register first at <https://paybyphone.co.uk/> registration or call 01273 458458 to do this.

Once registered you can pay using touch-tone or text, following the instructions on the meter. You do not need a smart phone for these methods.

Although Brighton & Hove City Council has reduced the number of on street cash pay and display machines, there is usually one per street.

You can also pay at using cash at a PayPoint. Find the nearest paypoint at www.paypoint.com/en-gb For the location of car parks visit www.park-up.com/brighton

Download the new free app where you can see all the on-street and off-street parking spaces available www.appyparking.com



Why not open your own Artists Open House?

If you live within the 01273 telephone area why not open your own house and become part of the May 2020 festival?

Registration opens on Tuesday 10th December and runs until early February.

Find out more about registration and make sure you take advantage of the early bird rates at www.aoh.org.uk

You will also find useful advice about how to find artists, set up your open house and join an open house trail.

julia trigg



I'm taking a break from Christmas Open Houses this year

Order prints online and get 20% off

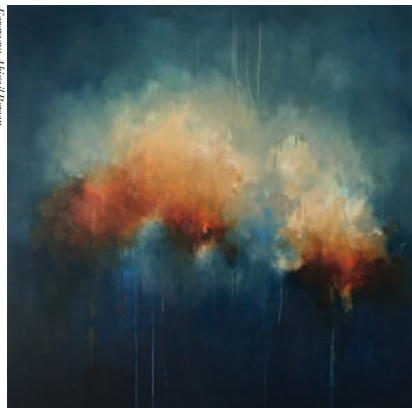
From 10th Nov – 10th Dec 2019

www.etsy.com/uk/shop/JuliaTrigg

1 Abigail Bowen

22 Clifton Street, Brighton BN1 3PH

Image courtesy: Abigail Bowen



(Please note: images shown may not be available please check website for current display items)

Abigail is showing abstract paintings, and presenting a new installation of small abstract pencil drawings *All The Lost Things*. In this piece, Abigail invites us to consider the weight and presence of things we have lost that we carry with us after they have gone. The visitor can choose a drawing that resonates and may leave a description to be added to the website, capturing the memory of the lost thing forever.

07753 747307
www.abigailbowen.com
info@abigailbowen.com

11.00-17.00						
	M	T	W	T	F	S S
18	19	20	21	22	23	24
25	26	27	28	29	30	1
2	3	4	5	6	7	8



2 The Prestonville Arms

64 Hamilton Road, Brighton BN1 5DN

Head The Holly King's Merry Men



Janet Brough
Sue Bromley
Michael Ward
Tina Goddard
Harriot Blanchard
Sally Denyer
Sarah Morrissey
Helen Wiggins
Fern Tucknott
Kirsty Sloman
Kate Celia Wilson
Kara Burke
Jeremy Carson
Lucy Roberts
Gizella Matthews
Jane Patterson
Serena Wells
Karen Lord

The Prestonville Arms is celebrating the local arts community and friends.

We have a varied range of artists' work displayed around the pub and within a dedicated space, including: watercolour, photography, graphic art, textiles,

jewellery, tote bags, mosaic mirrors, quirky lamps, furniture and art-work for the nursery.

Come and meet the artists, enjoy a complementary glass of mulled wine - and stay for lunch?

07906 893550
harriotblanchard@gmail.com

11.00-18.00						
	M	T	W	T	F	S S
18	19	20	21	22	23	24
25	26	27	28	29	30	1
2	3	4	5	6	7	8



3 Northern Lights

29 Lancaster Road, Brighton BN1 5DG

Image courtesy: Northern Lights



We are a Scandinavian-style home, a short walk from Seven Dials. Plenty new to see, with affordable art, Xmas gifts and treats. Enjoy our freshly baked cinnamon and cardamom buns with coffee whilst you browse.

Martine Jans Silver and gold jewellery
Brian Britton Ink drawings and studies
Julie Ingham Sussex coastal prints
Maison Moth Candles and well-being DNA Leather bags
Peter Slight Slip-cast ceramic beads
Alexander + Crofts
Printed and woven scarves
Scofinn Prints, textiles, Scandinavian decorations and baked treats

scofinn@yahoo.com
07884 000436
www.instagram.com/northernlightsopenhouse



11.00-17.00						
	M	T	W	T	F	S S
18	19	20	21	22	23	24
25	26	27	28	29	30	1
2	3	4	5	6	7	8

4 SNUG

7 Caburn Road, Hove BN3 6EF

Image courtesy: Charlotte Macpherson



With a background in fashion styling and window dressing, Jessica Christie-Miller has now been working with feathers for five years. Using locally sourced pheasant feathers and exotic feathers from around the world, Jessica specialises in Christmas wreaths, decorations, glamorous festival head dresses and jewellery. Workshops are also available.

jessicachristie-miller@hotmail.co.uk
07957 639015
lassoothermoon_snug instagram



11.00-17.00						
	M	T	W	T	F	S S
18	19	20	21	22	23	24
25	26	27	28	29	30	1
2	3	4	5	6	7	8

5 Salon des Sources

4 Chanctonbury Road, Hove BN3 6EL

Little Jigs Stacey Manser-Knight



Ceramics:
Stacey Manser-Knight
Jaq Buckeridge
Carol Thompson
Louise Kelly Pottery
Zincy Designs

Jewellery:
Jen Lee
Fiona Hutchinson
Diana Greenwood
The Decorated Woman

Wall art:
MJ Hodge
Pru Heath

Gifts and Homewares:
Halinka Fairies
Susan Kennewell
Atelier Bricolage
Collage Queen
Madame Treacle
Glowing Gardens
Sheila Pearson

You are buying straight from the sources at Salon des Sources.

The Salon will be opening its Christmas doors once again with an exclusive mix of beautiful arts and crafts.

jaqcards@ntlworld.com
01273 880385
www.facebook.com/SalondesSources



11.00-17.00						
	M	T	W	T	F	S S
	18	19	20	21	22	23 24
	25	26	27	28	29	30 1
	2	3	4	5	6	7 8

7 Cecil Rice

14 Granville Road, Hove BN3 1TG

7 am Venice Cecil Rice



Cecil Rice welcomes you to his house this Christmas, for two of the weekends only.

This yuletide selection of work showcases Cecil's latest originals in oils and watercolours and recent limited-edition prints. Inspired by his painting trip to Venice earlier this summer, his love of light and architecture find expression in paintings of Venetian canals and sunlit streets. With images of Brighton and other new subjects, there is something for everyone here!

cecilrice@gmx.co.uk
+447436 004833
www.cecilrice.co.uk



12.00-17.00						
	M	T	W	T	F	S S
	18	19	20	21	22	23 24
	25	26	27	28	29	30 1
	2	3	4	5	6	7 8

6 Art Across the Line

10 Highdown Road, Hove BN3 6EE

Doris Deer Art Across the Line



Experience a warm welcome with affordable art, gorgeous gifts and a glass of mulled wine. Showing a variety of work from established local artists and makers, plus new guests.

Kate Strachan
Painting, prints and textiles
Shyama Ruffell
Painting, prints and cards

katestrachan@mac.com
07816 660891
katestrachandesign.com



Table Brighton Edible gifts
Clair Boubli *Bou Jewellery*
Susanne Krone *Ceramics*
Ingrid Boucher *Sculpture*
Colin Ruffell *Prints and cards*
JJ Waller *Photography and books*
Be Natural Candles *Fragrant gifts*

11.00-17.00						
	M	T	W	T	F	S S
	18	19	20	21	22	23 24
	25	26	27	28	29	30 1
	2	3	4	5	6	7 8

8 Tessa Wolfe Murray & Guests

38 Lorna Road, Hove BN3 3EN

Building 'coats and Trowin' Balls: Tessa Wolfe Murray, Joyce Moore



Amanda Zoe
Jewellery
Tessa Wolfe Murray
Ceramics
Ruth Taylor
Painting
Robyn Neild
Sculpture
Joyce Moore
Textiles
Karen Hollis
Painting
Fleur Grenier
Metalwork
Wendy Dolan
Textiles
Louise Bell
Textiles
Brenda Anderson
Print making

Welcome to the home and studio of an internationally known ceramic artist. Guest artists' work complements and enriches the show. Temari Ball stitching demonstrations daily. Mulled wine and mince pies offered in exchange for a charity donation.

tessa@wolfevmurrayceramics.co.uk
01273 777574
www.wolfevmurrayceramics.co.uk



11.00-17.00						
	M	T	W	T	F	S S
	18	19	20	21	22	23 24
	25	26	27	28	29	30 1
	2	3	4	5	6	7 8

9 For The Man I Love

13 Maldon Road Brighton BN1 5BD

For The Man I Love



Amalia *Illustration*
Andrea *Ceramics*
Clara *T-shirts*
Donna & Julie
Cushions
Hannah *Mixed media*
Jay *Felt*
Juliet *Chutneys*
Lauren *Illustration*
Linda *Chocolates*
Marian *Glass*
Paul *Jewellery*
Paula *Textiles*
Sally *Textiles*
Simon *Illustration*
Stephanie *Illustration*
Tishell *Skincare*
Troy *Candles*

Welcome to one of the friendliest houses!
Voted in the top ten favourite Open Houses.

Featuring a huge selection of affordable gifts and art
for everyone – plus afternoon tea and a complimentary
spiced cider to warm you up.

info@forthemanilove.com
07736 656049
www.forthemanilove.com



11.00-17.00

M	T	W	T	F	S	S
18	19	20	21	22	23	24
25	26	27	28	29	30	1
2	3	4	5	6	7	8

11 The Chocolate House

78 Hangleton Way, Hove BN3 8EQ

The Brighton Bandstand in Chocolate Evelyn Day (Chocadyllic)



The Chocolate House returns! After a successful debut in May, Evelyn Day of Chocadyllic is opening her Chocolate Studio to the public again. There will be some fantastic guest artists with wonderful creations on show and for sale. Come and see unique chocolate showpieces, buy original art, gifts and chocolate products, all perfect for Christmas. There will be plenty

of chocolate samples, the indulgent Chocolate Cafe and the odd chocolate demo. See you soon!

Evelyn Day, Chocadyllic *Chocolate*
Mish Maudsley aka Mishfit
Spray paint, acrylic, oil, graphite
Katarina Jarvinen
Double exposure photographic art on canvas
Ian Daniels *Paintings and photographs*

chocadyllic@evday.co.uk
07939 289187
www.chocadyllic.co.uk



11.00-17.00

M	T	W	T	F	S	S
18	19	20	21	22	23	24
25	26	27	28	29	30	1
2	3	4	5	6	7	8

10 The Trojan House

26 Maldon Road, Brighton BN1 5BE

Queen Anne's Lace South Downs Troy Ohlson



Established for 19 years, the popular friendly Trojan House is the perfect place to find exciting and unique gifts. Enjoy captivating creations by talented Sussex artists and makers and a complimentary glass of Pete's delicious mulled wine.

Free weekend parking in Maldon Road.

Troy Ohlson
Painting and printmaking
J David Bennett
Brighton and Hove themed graphic art prints
Wild Wonder Ceramics
Animal sculptures
by Gill Hunter Nudds

Stained Glass Christmas Trees GLASSFOLLIES



Big Bad Brighton Bear
Art T-shirts made with a freak in mind
by Richard Denne
Shaw Things Jewellery
Contemporary handmade silver
GLASSFOLLIES *Stained glass*
Paul Rapley *Woodturning*
Chapman's Aromatics
Essential oils, creams and bath salts
CraftHus
Wax melts and upcycled textiles

Inspired by the Sea
Needle felting by John and sewing by Belinda
Primordial Soup
Creatures created from chaos
Brighton Bottles *Lamps and bowls*
Treasures by Troy
Hand crocheted filigree jewellery
Bedsit Games
Brighton-based board games
Hoarder & Maker
Witty cutlery

troyohlsonart@gmail.com
07885 911049
www.trojanhouse.com



11.00-17.00

M	T	W	T	F	S	S
18	19	20	21	22	23	24
25	26	27	28	29	30	1
2	3	4	5	6	7	8

12 Villa LVI

56 Payne Avenue, Hove BN3 5HD

Book Garden: Virginia Vincent



Old Hanoï
Textiles
Kai Nemra
Painting
Chris MacDonald
Sculpture
Claire Anstey
Wire art and jewellery
Paper Botanica
Paper
Lisa Pilling
Jewellery
Oliver Dawson
Painting
Virginia Vincent
Mixed media

An established, eclectic, fun and atmospheric Open House in the heart of Poet's corner, showing a wide variety of art and crafts at affordable prices.

vvirginie23@gmail.com
07813 217142
www.facebook.com/VillaLVI

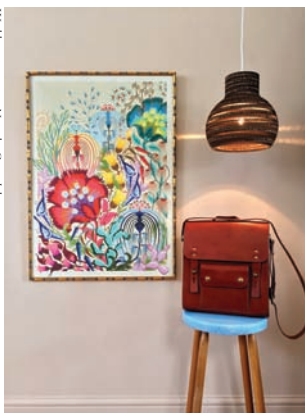


11.00-17.00						
M	T	W	T	F	S	S
18	19	20	21	22	23	24
25	26	27	28	29	30	1
2	3	4	5	6	7	8

14 Workhaus Studios

Workhaus, 18a Arthur Street, Hove BN3 5FD

Workhaus features: Natasha Coverdale



Wolfram Lohr
Leatherwork
Natasha Coverdale
Prints and products
Tabitha Barch
Lighting

Open weekend 7th and 8th December

Saturday 7th:
Late Shop till 8pm.
Meter parking outside
and we are right by
Aldington train station.

Come and find, hidden in Hove, luscious lighting, lovely leather accessories and fabulous floral prints and products. All the treats you need for the festive season. We will be here to give you a warm welcome and some Christmas cheer!

info@wolframlohr.com
07988 164640
https://wolframlohr.com



Sa 11.00-20.00, Su 11.00-17.00						
M	T	W	T	F	S	S
18	19	20	21	22	23	24
25	26	27	28	29	30	1
2	3	4	5	6	7	8

13 Anna Pugh

Unit 8, 18a Arthur Street, Hove BN3 5FD

Sister Made and Tanyou (Orange Emma Connan)



Come and visit the Anna Pugh workshop to see leather bags and accessories that are all designed and made in-house with a strong focus on feminine utility and a chance to see a new collaborative project with artist Chris Kettle.

Anna Pugh *Leather bags*
Chris Kettle *Painting*

Open 29th Nov-1st Dec only.

info@annapugh.co.uk
www.annapugh.co.uk



11.00-18.00						
M	T	W	T	F	S	S
18	19	20	21	22	23	24
25	26	27	28	29	30	1
2	3	4	5	6	7	8

15 Jules Emporium

100 Portland Road, Hove BN3 5DN

Jules Emporium



Sue Ross
Mixed Media
Romana Sperska
Painting
Nina Mooncie
Illustration
Jan Brown
Drawing
Inky Kat Studio
Print making
Armenia
Mixed media
Curious Alice Studio
Textiles
Adam Bannister
Illustration
Jules O'Keefe
Mixed media

A gallery and shop showcasing a collection of original works including jewellery, ceramics, textiles, paintings and decorative plant displays created by various local artists and makers. Relaxed and informal in style, we offer something for everyone.

julesemporium@gmail.com
01273 038127
@jules_emporium



10.00-17.00						
M	T	W	T	F	S	S
18	19	20	21	22	23	24
25	26	27	28	29	30	1
2	3	4	5	6	7	8

16 Bluebell Would

45 Westbourne Gardens, Hove BN3 5PN

Stripped Back: Bluebell Would



Refreshments available for a donation to local charity Allsorts Youth Project

bluebellwouldopenhouse@gmail.com
07739 477611
www.instagram.com/bluebellroebuck



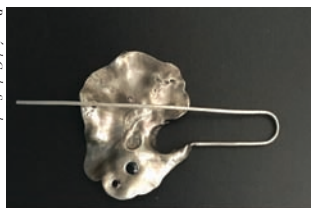
Bluebell Roebuck
Photography, alcohol ink and textiles
Abi Street
Glass landscapes
Wooden Rabbit Studio
Collagraphy, paper cutting and ceramics
Gill Harvey
Ceramics
Caroline Chalton Hellyer
Ceramics
Allison Murphy
Painting and reliefprints
Joanna Lloyd Glass
Mark Munroe-Preston
Digital art
Witchwood Candles
Eco candles
Crazy Cat Lady Boutique
Cat-themed gifts
Where The Water Ends
Designs
Jewellery
Nicky Bell
Contemporary watercolours

11.00-17.00										
M	T	W	T	F	S	S				
18	19	20	21	22	23	24				
25	26	27	28	29	30	1				
2	3	4	5	6	7	8				

18 Esquirlas

12 Langdale Road, Hove BN3 4HN

Revered: Carlos Sanchez



Esquirlas will welcome you and delight your senses in our Christmas shopping atmosphere. ESQ is a contemporary jewellery brand by Carlos Sanchez (Venezuela) and Mariana Teixeira (Portugal) where each piece is designed and made entirely by hand. A new collection, ideal for gifts, will be displayed.

Also, renowned international artists and makers show their new work, ideal for gifts, including artistic photographs, small paintings and eclectic items.

See you in the Festive Season!

carlos@esquirlas.com
07940 353373
http://esquirlas.com



12.00-19.00										
M	T	W	T	F	S	S				
18	19	20	21	22	23	24				
25	26	27	28	29	30	1				
2	3	4	5	6	7	8				

17 Surf and Turf

38 Braemore Road, Hove BN3 4HB

Gold Turbidity Earth Jewellery Emma Stanton Jewellery



Surf and Turf returns after a year off and we are feeling refreshed and ready! This year we hope to help you source all your gifts and wares by bringing you a great choice of artists from near and far. We positively encourage non mass-production and know that you will find something special in our collection of artist and makers, who represent the very best in artwork, handmade creations, slow fashion and more!!

Rarebit Design Ceramics
Piece Together
Clothing and lifestyle textiles
Studio Frond Embroidery art
Hoity Toity
Vintage inspired jewellery
Home Troussseau
Sustainable pure linen textiles
Nancy McIland Perfumes
Mike Moran Ceramics
Sue Penrose Mosaic
Terry Logan Painting
Emma Harris Photography
Timber and Glaze Ceramics
Pip Bishop Illustration
Holly Bell Ceramics
Suzanne Breakwell Sculpture
Emma Stanton Jewellery
Jessica Christie-Miller
Feather designs, decor and jewellery
Peggy Poppleton Collage
Jo Cranston Textiles
Hannah Forward Printmaking
Joy Fox Mixed media
Georgia Flowers Printmaking
Ginger & Brown Leather bags
Honest Woman Wreaths Floristry



Hand thrown vase: Timber and Glaze

Easy parking.

Teas, coffees and homemade ginger biscuits always on offer (other refreshments are available!)

emmastantonmail@gmail.com
07759 584121
www.emmastantonjewellery.co.uk

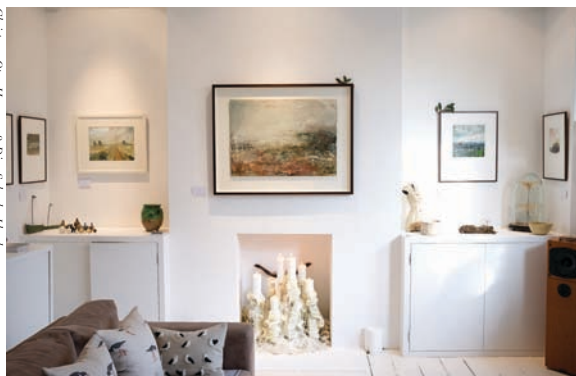


11.00-17.00										
M	T	W	T	F	S	S				
18	19	20	21	22	23	24				
25	26	27	28	29	30	1				
2	3	4	5	6	7	8				

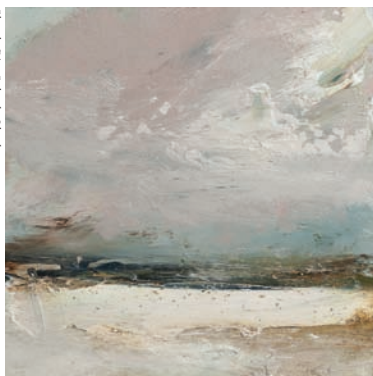
19 Dion Salvador Lloyd

18 Goldstone Villas, Hove BN3 3RQ

Christmas Open House visit: Dion Salvador Lloyd



Sylvia: Dion Salvador Lloyd



You are warmly welcome to visit the home and studio of Brighton born artist Dion Salvador Lloyd.

An exhibition of new paintings and works on paper, alongside limited edition signed prints.

Recent achievements include: Invited Artist at the ING Discerning Eye Exhibition 2019, at The Mall Galleries, London; Worthing Museum & Art Gallery have selected Dion's work for their permanent collection.

Represented by galleries in London and the UK.

Commissions undertaken.

Please contact Dion for private viewings at other times.

Comments from Dion's Open House visitors' book:

'Such a wonderful journey of discovery.'

'Excellent start to the day'

'Gets better every year'

'Uplifting, beautiful and thought provoking! Amazing as always'

'A privilege and pleasure'

'Outstanding, inspirational work as always.'

info@dionsalvador.co.uk
01273 321029
www.dionsalvadorlloyd.com



10.00-18.00

	M	T	W	T	F	S	S
18	19	20	21	22	23	24	
25	26	27	28	29	30	1	
2	3	4	5	6	7	8	

20 Villa Lucia's Emporium

11B Goldstone Villas, Hove BN3 3RR

Ellie Kay Feathered fantasy



An emporium of treasures and treats. We welcome you to come and enjoy our secret garden flat in Hove. You can shop original up-cycled clothing, head wear, hats, headdresses and taxidermy. Art, textiles, upholstery and jewellery too. Great Christmas gift ideas, for the unique and thoughtful shopper.

Ellie Kay Feathered fantasy

lucindakennard@yahoo.com
07875 225277
www.featheredfantasy.com



	M	T	W	T	F	S	S
18	19	20	21	22	23	24	
25	26	27	28	29	30	1	
2	3	4	5	6	7	8	

21 David Streeter & Friends

54 Osborne Villas, Hove BN3 2RB

Wedding the sun goes down: David Streeter Photography



A warming noggin of spiced honeyed vodka and festive treats awaits you, along with a superb selection of affordable art with a reclaim/ reuse theme, plus locally crafted jewellery, cards, decorations and Lucy's homemade Christmas preserves. We'll also be premiering work from three exciting Brighton graduates.

David Streeter Photography

Anni Axworthy Sculpture

Lizzie Kershaw Jewellery

Louise Erskine Painting

Rowena Park Jewellery

Sue Elderfield Mosaic

Sojung Kim Painting

Morag Caister Painting

Christopher Daubaras Painting

davidjohnstreeter@gmail.com
07803 743782
www.davidstreeterphotography.com



11.00-18.00

	M	T	W	T	F	S	S
18	19	20	21	22	23	24	
25	26	27	28	29	30	1	
2	3	4	5	6	7	8	

22 The Gift House at 28

28 Osborne Villas, Hove BN3 2RE

Source: Peter Jo Hathaway



We are a group of ten artists who have come together in what we hope will be an alchemy of Christmas and winter creations – paintings, ceramics, prints, jewellery, textile decorations, and cards – all lit by twinkly fairy-lights and served with mulled juice and cider and mince pies.

We would love you to call in.

Source: Hellyer Ceramics



Artists featured:
Jo Hathaway *Painting*
Natasha Caughey *Jewellery*
Carol Murphy *Jewellery*
Liz Temperley *Illustration*
Little Kitt Pics *Illustration*

Caroline Chalton Hellyer *Ceramics*
Anna Perring *Ceramics*
Susy Barnes *Textiles*
Lou Light *Painting*
Simon Bottrell *Mixed media*

hathawayjo@gmail.com
07501 009280
thegifthouseat28.co.uk



10.00-17.00									
M	T	W	T	F	S	S			
18	19	20	21	22	23	24			
25	26	27	28	29	30	1			
2	3	4	5	6	7	8			

23 9A Hove Place

9A Hove Place, Hove BN3 2RG

Source: John Maltby



Source: John Maltby



Ceramics:
Beverley Bell Hughes
Daniel Boyle
Nic Collins
Dalloun (France)
Robert Cooper
Rosalie Dodds
Barbara Gittings
Sam Hall
Walter Keeler
Rodney Lawrence
Sabine Nemet
Elizabeth Raeburn
David Roberts
Yuta Segawa
Lara de Sio (Italy)
Pat Southwood

Peter Sparrey
Georges Sybesma
(France)
Matt Waite
Peter Wills
Gilles Le Corre

Sculpture:
John Maltby
Ian Gregory
Peter Hayes

Jewellery:
Amanda Ray
Elsiem Jewellery

Wood:
Tim Plunkett

Painting:
John Brokenshire
Mari Anne K Karpas
Tim Patrick
Michael Rees
Amanda Wallwork
Plus guest artists.

mike@miaartarts.com
07974 703515
www.miaartarts.com/exhibition/



Other days by appointment									
11.00-18.00									
M	T	W	T	F	S	S			
18	19	20	21	22	23	24			
25	26	27	28	29	30	1			
2	3	4	5	6	7	8			

24 Unique Arts Gallery Hove

14 Victoria Terrace, Hove BN3 2WB

Source: Copyright: Brighton Larder, London Smith



Come join us at our Hove Art Gallery for festive shopping with delicious stollen and mulled wine. Our warm and friendly atmosphere, accompanies our diverse range of local artists' works. From limited edition prints to one of a kind original paintings and sculptures, you're sure to find the perfect present.

Alej Ez, Alexandra Richardson, Ant Fox, Colin Ruffell, David Freeman, David Price, Ilona Drew, Joe Ramm, Karen Hollis, Linescapes, Lyndsey Smith, Max Langran, Mike Dicks, Nicola Hodgson, Sue Collins, Stephen Meakin, Tim Bulmer, Zoe Lakshmi.

service@uniquearts.ltd.uk
01273 256440
www.uniquearts.ltd.uk



10.00-18.00

M	T	W	T	F	S	S
18	19	20	21	22	23	24
25	26	27	28	29	30	1
2	3	4	5	6	7	8

25 Albert Mews Studio

11 Albert Mews, Third Avenue, Hove BN3 2PP

Wild and Posh Art: Cabbids



After taking a year off, we are back this Christmas bigger and better than ever! With great gifts and perfect presents for everyone! New and returning artists include:

Lume Lighting
Martha Mitchell Design
Homeware and gifts
Lulu McQueen Jewellery
Window Advent calendars and cards

albertmewsstudio11@gmail.com
01273 723116
www.facebook.com/albertmewsstudio



Shaloah Skincare
Hove Made Pickles and chutneys
Anna's Drawing Room Prints
Cubbids Handmade goods
for children and adults

Holly Smith
Handmade books and stationery
We Are Moxi Candles
She Knits You Love Crochet gifts
Plus lots more!

11.00-18.00

M	T	W	T	F	S	S
18	19	20	21	22	23	24
25	26	27	28	29	30	1
2	3	4	5	6	7	8

26 Branch Out Studio

Garage at end of alleyway, Church Road (access from Second Ave), Hove BN3 2FN

Steven Slater: Gill Copeland



Three women artists exhibiting in a converted garage with natural light, Branch Out studio is easily accessed from Second Avenue, between Joe's Burgers and Libation.

A selection of works by Gill Copeland, award winning photographer, with images of weather-beaten shorelines and wide open spaces.

Hannah Thompson willow-grower, selling her Christmas wreaths, also exhibits her new series of Brighton bench paintings.

Sophie Larsen creates jewellery using beautiful beach finds of sea-beaten Victorian glass and stone.

hans_uk@hotmail.com
07913 532809
www.gillcopeland.com



09.45-16.00

M	T	W	T	F	S	S
18	19	20	21	22	23	24
25	26	27	28	29	30	1
2	3	4	5	6	7	8

UNIQUE ARTS

• FRAMING •

Bespoke Framing & Mount Cutting
Ready Made Frames • Friendly
Professional Team • Fast Turnaround

• PRINTING •

Large Format Canvas & Photo Printing
Artwork Scanning • Limited Edition
Giclee Printing • Finishing • Mounting

Turn Your Artwork into Sellable Pieces

Discounts for AOH Artists

• GALLERIES •

UNIQUE ARTS
14 Victoria Terrace
BN3 2WB Hove
01273 256440

THE ARTCH
243 Kings Road
BN1 1NB Brighton
01273 936676

• ONLINE •

All Paintings, Prints and Frames available online
www.uniquearts.ltd.uk

[@uniqueartsuk](https://www.facebook.com/uniqueartsuk)

27 Cameron Contemporary Art

1 Victoria Grove, Second Avenue, Brighton and Hove BN3 2LJ

Blue Wolf Kate Horne



Cameron Contemporary is an award winning independent art gallery. Our regularly changing exhibition programme shows up-and-coming and establish British-based artists, most with a strong Sussex connection. Check our website for more details.

Artists include:

Patsy McArthur *Painting*

info@cameroncontemporary.com

01273 727234

www.cameroncontemporary.com



Luke Hannam *Painting*
Julie Nelson *Ceramics*
Kate Viner *Sculpture*
Judith Rowe *Ceramics*
Mark Johnston *Painting*
Victoria Graimes *Painting*
Victoria Kiff *Painting*
Kirsty Wither *Painting*
Harriet Porter *Painting*

10.30-17.00									
M	T	W	T	F	S	S			
18	19	20	21	22	23	24			
25	26	27	28	29	30	1			
2	3	4	5	6	7	8			

29 JJ. Waller. Photographer

3 Brunswick Street West, Brighton and Hove BN3 1EL

Brighton Soufflé - drink JJ. Waller



JJ. Waller is exhibiting as an Open House sole artist for the very first time.

"Widely acclaimed for consistently producing poignant often humorous images that capture Brighton's zeitgeist."

"A master of street photography."

A great opportunity to buy framed prints and unique facsimile tubes of Brighton rock containing an A3 print ready to frame. All 7 of his books will be available at special prices.

Waller will be around to sign and to chat.

Open 2-4pm each festival weekend.

office@jjwaller.com

07913 175139

www.jjwaller.com



14.00-16.00 (only)									
M	T	W	T	F	S	S			
18	19	20	21	22	23	24			
25	26	27	28	29	30	1			
2	3	4	5	6	7	8			

28 Adelaide Artists

Ground Floor, 9 Adelaide Crescent, Hove BN3 2JE

Devine Sounds



Adelaide Artists' sixth Open House will be a magical emporium and treasure trove of Christmas art.

We have Santa's grotto and gingerbread decorating for children and mulled wine for grown ups.

Expect to see, oil paintings, street art, jewellery, fabulous fashion, ceramics, recycled art, organic skincare,

devinesoundsbites@hotmail.com

07977 532136



sculpture, prints, seasonal decorations and much more.

We will also be hosting weekly themed supper clubs. Please email if you'd like to book. We have space for 20 diners.

Our Private View is Friday 22nd November, 6.30 to 8.30pm. Come for a glass of fizz.

11.00-17.00									
M	T	W	T	F	S	S			
18	19	20	21	22	23	24			
25	26	27	28	29	30	1			
2	3	4	5	6	7	8			

30 Studio 50 Hove

50 Brunswick Street West, Brighton and Hove BN3 1EL



Artists and designers include:

Cocoon & me
Katie Weiner
Little Sol Sol
Eleven Everything
Mr Spence
Dove & Myrtle
The Knitting Factory
Woven Store
Honest Woman
Rupert Hartley

Studio 50 welcomes you to come and soak up the atmosphere at our vibrant new art and design space in Hove.

Converted from a former mechanics' garage, Studio 50 houses work spaces, a gallery and a pop-up shop. We have something for everyone including fine art, flowers, fashion and jewellery, from a carefully curated selection of local makers.

studio50hove@gmail.com

07932 645274

www.facebook.com/studio50hove/



11.00-18.00									
M	T	W	T	F	S	S			
18	19	20	21	22	23	24			
25	26	27	28	29	30	1			
2	3	4	5	6	7	8			

31 The Regency Town House

13 Brunswick Square, Brighton and Hove BN3 1EH

Landscape: Laura Darling



Pot: Stef Hunter



Seated figure: Juliet Milward



Portrait: Rosin O'Shea



In the magnificent drawing room of The Regency Town House, six artists present a stunning collection of paintings, drawings and ceramics. The six met at the St Andrews Place Art School in Lewes and continue to work collaboratively.

Rosin O'Shea is a South African born self-taught artist who is a successful interior architect and founder of the design and build business Red Square D&B. An artist and sailor who is passionate about people, portraits and experiencing the world's many cultures.

Tan Kingston is a fine artist based in Kent, Sussex and Somerset. Her oil paintings are an exploration and interrogation of aesthetics through colour, brushstrokes and texture.

Laura Darling paints in oils to capture semi-abstract interpretations of landscape; exploring colour, texture and the morphology of the land. Her more figurative work focuses on still life, employing similar paint techniques to evoke mood and light

Stef Hunter is a ceramicist. She produces thrown and hand-built ceramics with a focus on colour and surface, influenced by the seasons and places on the South coast. Stef graduated in 3d design from Bristol and completed an MA in Ceramics at UCA Farnham.

Juliet Milward is a figurative artist, painting in oils. Her use of colour draws the viewer into the atmosphere created in her paintings, where the background and figure are given equal importance.

Jane Palmer won the Artist of the Year award in the May AOH festival. She specialises in portraits in oils, and welcomes commissions. Jane loves 'capturing those elusive moments when models forget themselves and travel somewhere else'. She will also be showing her Sussex landscapes, still lifes and life drawings.

palmer.jane1963@gmail.com
07710 710766
janepalmerbrighton.co.uk



						11.00-17.00	
						S	S
M	T	W	T	F		23	24
18	19	20	21	22		30	1
25	26	27	28	29		7	8
2	3	4	5	6			

32 Progressive Synagogue

6 Lansdowne Road, Hove BN3 1FF

Restaurants, Venues, Café/Ré



A warm welcome to our **one-day-only** exhibition of artists and artisans – with tea, coffee and homemade cakes.

Cecil Rice has been painting sunlight and water in oils and watercolours since the 1980s

Ronnie Rosenberg

Handmade pottery

Rachel Thomas

Handmade domestic ceramics

Sue Penrose Mosaics

Linzi Light

Figurative paintings and three-dimensional work that combines painting with found objects, inspired by the sea

Jo Cranston

Luxury lambswool knitwear

Rod Clark

Geometric abstracts in acrylic

Matt Goddard

Photography of the south coast and countryside

Nadarra Cosmetics

Organic skincare

Penny Mechen

Watercolours and acrylics



Vase: Ronnie Rosenberg

Open Sunday 1st December only.

info@bhps-online.org
07841 488620
www.bhps-online.org



10.00-18.00													
M	T	W	T	F	S	S							
18	19	20	21	22	23	24							
25	26	27	28	29	30	1							
2	3	4	5	6	7	8							

Key

Venue Listings

Contact details

anarhouse@gmail.com
07700 770 770
www.anarhouse.co.uk



Facilities offered
(see below for details)

Opening times
(24hr clock)

11.00-17.00													
M	T	W	T	F	S	S							
18	19	20	21	22	23	24							
25	26	27	28	29	30	1							
2	3	4	5	6	7	8							

Dates not open
(light, black type, on
white background)

Days and dates open
(bold, white type, on
orange background)



Refreshments served



Disabled access



Easy parking



Card payment facility



New venue – first year open



Garden open



Workshops/demonstrations



Live music



Houses offering water bottle refills

Map

- Open House venues
- Station
- Brighton Museum
- Church
- Car Park
- Urban areas
- Park or urban green area
- Rural area
- Water



Hove

WEST PIER



Brighton

BRIGHTON PALACE PIER

Kemptown

BRIGHTON MARINA

33 92 Montpelier Road

92 Montpelier Road, Brighton BN1 3BE

Donna James's Letter to a Paper in Pencil, Iain Woods



Donna James
Illustration
Ella Medley-Whitfield
Mixed media
Seiko Kato
Textiles and prints
Abi Horn
Mixed media
Vivienne Ridley
Jewellery
Iain Woods
Mixed media
Tiffany Lynch
Painting
Alejandro Martinez Rodriguez
Prints
Tina Davies
Ceramics
Corpo Sancto
Scented candles
Cecilia Trollby
Ceramics
Risza Lopes da Cruz
Jewellery

One weekend only! We're expanding. More rooms. More artists. More products. Christmas cakes and kids cookie decorating with Karen Wright (Great British Bake Off contestant, 2018).

risza.lopesdacruz@gmail.com
07526 875580
Instagram: @92MontpelierRoad



10.30-18.00									
M	T	W	T	F	S	S			
18	19	20	21	22	23	24			
25	26	27	28	29	30	1			
2	3	4	5	6	7	8			

Open weekend 7th and 8th December only.

35 BouSham Open House Popup

6 Dukes Lane, Brighton BN1 1BG

BouSham's 'Competition: Clair Boublil and Shyama Ruffell'



See local talent in abundance! We are showcasing stunning local work by local artists and makers. From jewellery to fine art and textiles to glassware.

Bou Jewellery
Contemporary jewellery by Clair Boublil
Shyama Ruffell
Paintings, prints, cards, home wear products
Maria Tilyard
Cushions
Ocean Sole
Flipflop animals
Cocoon&me
Macrame bangings
Gabriele Ghiani
Sculpture

boujewellery@gmail.com
07503 401905
@boujewellery @shyamaruffell



Caroline Charlton Hellyer
Ceramics
Collin Ruffell
Painting
Fran Slade
Painting
Linescapes
Architectural illustration
Jo Saunders
Bags
Rachel Entwistle
Ceramics
Bite Your Granny
Cards, prints and badges
Onneke
Lampshades and prints
Hal of Hove
Natural chemistry and products
BeNaturalCandles
Soaps and candles
Quirkypop
Collectables

Mo-Sa 10.00-18.00, Su 11.00-17.00									
M	T	W	T	F	S	S			
18	19	20	21	22	23	24			
25	26	27	28	29	30	1			
2	3	4	5	6	7	8			

34 Urban Miniatures

11 Dukes Lane, Brighton BN1 1BG

Invercity Train Carriage Remi Rough



A phenomenal line up of 40 international graffiti, urban and contemporary artists, painting on a tiny scale. A Hornby train set has been adapted, painted, lit and cut up by artists to produce a subversive model city.

Artists include:
Ange Bell, DONK, Eelus,
Frea Buckler, H, Lois O'Hara, NOKI,
Pure Evil, Remi Rough, Victoria
Homewood and Xenx.

Originals, prints, skateboards and tiny art works available, alongside a series of miniature themed workshops.

info@paxtonglew.com
www.paxtonglew.com
www.instagram.com/paxtonglew



Tu-Sa 10.00-17.30, Su 10.00-16.00									
M	T	W	T	F	S	S			
18	19	20	21	22	23	24			
25	26	27	28	29	30	1			
2	3	4	5	6	7	8			

36 Orna & Amanda at Middle Street

Middle Street Synagogue, 66 Middle Street, Brighton BN1 1AL

Orna & Amanda, Ben Gibson



We are delighted to be exhibiting our paintings in this stunningly beautiful Grade II* listed synagogue.

Orna Schneerson Pascal expresses her love of life through her joyful patterned abstracts on canvas and textiles.

Amanda Rosenstein Davidson themes her artwork with theatrical storytelling, and offers on the spot pastel portraits.

You will receive a warm welcome on your visit with plenty to see, do and purchase.

middlestreetsynagogue@gmail.com
01273 888855



Su 13.00-16.00, We 12.00-15.00									
M	T	W	T	F	S	S			
18	19	20	21	22	23	24			
25	26	27	28	29	30	1			
2	3	4	5	6	7	8			

37 Magic Theatres and Stars

Brighton Fishing Quarter Gallery, Kings Road Arches, Brighton BN1 1NB

Philip Hammond Suggs with Puppeteer Amanda Rosewell Davidson



Imagine being a Victorian child peering with wonder into a little shop window of miniature cut-out theatres as the dark winter days draw in. The Toy Theatres of Sugg and Davidson recreate this nostalgic memory like a beacon of joyful light heralding the festive season.

Set in the Fishing Museum Gallery, this display of original hand-painted stage sets, prosceniums, puppets and kits are inspired by local places and historical events for you to enjoy.

One weekend only.

artsugg@yahoo.co.uk
07960 868847
www.puppet-theatres-brighton.com



12.00-18.00									
M	T	W	T	F	S	S			
18	19	20	21	22	23	24			
25	26	27	28	29	30	1			
2	3	4	5	6	7	8			

39 Tina Davies Art

Arch 230, Brighton Beach, Kings Road Arches, Brighton BN1 1NB

Sophy, Sophy: Tina Davies



Showcasing new paintings, prints, ceramics, limited edition prints, cushions, greeting cards and a few other goodies – perfect gifts for Christmas at my new studio arch along the seafront.

tinadavies_art@hotmail.com
01273 720515
www.tinadavies.eu



11.00-17.00									
M	T	W	T	F	S	S			
18	19	20	21	22	23	24			
25	26	27	28	29	30	1			
2	3	4	5	6	7	8			

38 229 Studio

Arch 229 Kings Road Arches, Brighton BN1 1NB

229 Studio: Holly Bell



We specialise in the 'tricky-to-buy' at 229 Studio – Brighton's beachfront gallery and micro-pottery. Pop in to discover our beautiful Brighton-inspired collections and we'll soon help you find that perfect present. Enjoy home-baked cookies as you browse, and relax as we gift-wrap your finds. You'll soon tick those names off your list.

mrmichaelmoran@yahoo.co.uk
01273 731998
www.instagram.com/229studio



Ewan Rogers *Turned wood*
Katie Brinsley *Ceramics*
Mike Moran *Ceramics*
Ken Eardley *Ceramics*
Holly Bell *Ceramics*
Ulrika Jarl *Drawing*

11.00-17.00									
M	T	W	T	F	S	S			
18	19	20	21	22	23	24			
25	26	27	28	29	30	1			
2	3	4	5	6	7	8			

40 Martin Thomas Gallery

Arch 235, Kings Road Arches, Brighton BN1 1NB

The Lanes: Martin Thomas



Martin now has his own gallery in the heart of Brighton's Artists' Quarter down on the seafront.

There will be new paintings on show along with a range of prints and cards.

martin@martinpaintspictures.com
07734 104419
www.martinpaintspictures.com



11.00-17.00									
M	T	W	T	F	S	S			
18	19	20	21	22	23	24			
25	26	27	28	29	30	1			
2	3	4	5	6	7	8			

41 Arundel Mews Collective

Arundel Mews, Arundel Place, Kemptown, Brighton BN2 1GG

Arundel Mews



Arundel Mews



Kate Jenkins



big-art Brighton



Welcome to the eclectic world of Arundel Mews. Nestled in Kemptown, the Mews offers a collective of artists specialising in handmade crafts and Fine Art. Visit us to peruse ceramics, original etching, lithographs, woodcuts, textiles, knitwear, framing and coffee.

Join us for a one off Christmas weekend of good cheer, creativity and chat. Artists will be working in the studios demonstrating etching, relief and ceramics and there will be a pop-up espresso bar, courtesy of Red Roaster. Parking available, dogs welcome.

Open weekend 7th and 8th December only.

hello@big-art.co.uk
01273 603109
www.big-art.co.uk/events.html



11.00-17.00									
M	T	W	T	F	S	S			
18	19	20	21	22	23	24			
25	26	27	28	29	30	1			
2	3	4	5	6	7	8			

42 Potters Bar Brighton

Flat 1, 4 Eastern Terrace, Brighton BN2 1DJ

Nature's Treasures: James Foley



On the 12th Day of Christmas Pottersbarbrighton gave to me, Four Painters Painting, Three Stitchers Stitching, Three Jewellers Jewelling, Two Potters Potting – but no partridge in a pear tree! Fine arts and crafts for collectors and connoisseurs; fabulous Christmas gifts for families and friends, in a

stunning Kempdown seafront apartment and garden.

Artists include:
James Foley, Serena Sussex, Allison Murphy, Aysenil Senkul, David Lilly, Mark Newman, Alison Hopkins, David Bennett, Carole Walker, Faye Hughes, Denise Hopper, Mary Faux Jackson.

jamesfoleybn2@gmail.com
07545 831961
pottersbarbrighton.com



11.00-18.00

M	T	W	T	F	S	S
18	19	20	21	22	23	24
25	26	27	28	29	30	1
2	3	4	5	6	7	8

43 Red Brick House

10 Walpole Road, Brighton BN2 0EA

Ornate Pottery: Sophie Wake



Sophie Wake
Painter

Winner of the Best Artists Open House award May 2019, the Red Brick House warmly invites you to share in the spirit of awakening the senses this Christmas.

Sophie Wake's one woman show promises a feast of exciting new work for sale, original paintings, ceramics, wooden menagerie, soft furnishings, prints, cards, festive victuals, cosy wood fires and more.

Come find your inner animal.

sophiewake@icloud.com
07855 764413
www.sophiewake.com



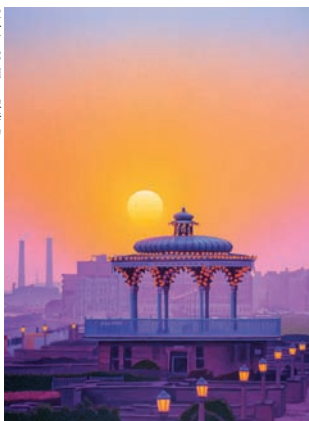
11.00-17.00

M	T	W	T	F	S	S
18	19	20	21	22	23	24
25	26	27	28	29	30	1
2	3	4	5	6	7	8

44 The Villa Studio

11 Walpole Terrace, Brighton BN2 0EB

Lighting Up: Philip Dunn



Artists on display include award-winning artists:

Philip Dunn
Painting and prints
Illona Drew
Landmark prints
Ulrika Jarl
Prints and homeware
Stephanie Else
Glass art fusion
Garth Williams
Metal sculptures
Barbara Simons
Photography
Mirka Nowysz
Felt art fashion

And launching local Brighton artist Juliet Walters' fantastic new ceramic collections.

Kempdown interior designer Diana Garnier hosts this event at The Villa Studio, opposite Brighton College, offering a variety of unique Christmas gifts and free gift wrapping service.

diana.thevilla@gmail.com
07792 489748
www.thevillastudio.co.uk



12.00-18.00

M	T	W	T	F	S	S
18	19	20	21	22	23	24
25	26	27	28	29	30	1
2	3	4	5	6	7	8

45 The Photographer's Greenhouse

24 East Drive, Queens Park, Brighton BN2 0BQ

Commissioned portrait: Charlotte Macpherson Photography



We celebrate sustainable and meaningful giving that won't cost the Earth.

Visit the photo studio and book a family portrait for Christmas with Charlotte Macpherson, or pop in the photobooth for a fun Xmas card.

Come browse our gorgeous array of kitchen, home and garden inspired goodies, planters, macrame and cards.

Café and food gifts by tablebrighton

Living wreaths and vintage treasures by

Huntress and Forager

Paintings by Faye Bridgwater
Feathered adornments from Jessica Christie-Miller and much more...

Call Charlotte for weekday bookings and Friday workshop itinerary

photos@charlottemacpherson.co.uk
07880 988290
The Photographer's Greenhouse facebook page



11.00-17.00

M	T	W	T	F	S	S
18	19	20	21	22	23	24
25	26	27	28	29	30	1
2	3	4	5	6	7	8

46 LittlePapa House

333 Queens Park Road, Brighton BN2 9ZL

Illustration: Kirsten Forman; Book: Little Papa



A beautiful light airy space with a retro, whimsical feel. Our art and prints range from stocking fillers to awesome one off pieces. You will find a fabulous range of jewellery, ceramics, prints, cards, Christmas decorations, sweatshirts, bags, miniatures, badges and framed art.

We will also be running a 'print your own t-shirt' while-you-wait workshop, for children up to age 12, every weekend (subject to availability of stock).

yvette@littlepapa.co.uk
07753 815887
www.littlepapaohouse.co.uk



Kristin Lundgren Designs
Liz Turner
Florence and Talulah
Rock Cakes
Madeby Jarl
LittlePapa
Mary Moox
Pomelo Crafts
Cassia Beck
Katherine Morton
Pinkijones
Tiny Treat Boutique

10.00-17.00

M	T	W	T	F	S	S
18	19	20	21	22	23	24
25	26	27	28	29	30	1
2	3	4	5	6	7	8

48 One-Six-Nine

169 Preston Drive, Brighton BN1 6FN

Portrait by Hiroko Lewis



Hiroko is proud to welcome you to her Christmas Open House, which features a talented group of international artists and creators with a varied collection of high quality work. Come and find us up at Fiveways, right opposite Blakers Park!

hiroko@onesixnine.co.uk
01273 508651
www.onesixnine.co.uk



Hiroko Lewis
Oil and patination painting
Kitty Cava *Print making*
Dona Diani *Jewellery*
Mark Wilson *Painting*
Victor Braun *Painting*
Tom Peterson *Raku*

11.00-17.30

M	T	W	T	F	S	S
18	19	20	21	22	23	24
25	26	27	28	29	30	1
2	3	4	5	6	7	8

47 Amber Elise

3 Princes Road, Brighton BN2 3RH

LOVE Art: Amber Elise



New to Brighton, London based artist and Bristol gallery owner Amber Elise is opening her house to the arts trail for the first time.

Showcasing a selection of limited edition prints and greetings cards and launching her new 'colour your own t-shirts' for children plus bespoke 'Art Wishes' – there's something to suit all budgets.

Amber has worked as a freelance artist, illustrator and muralist since 2010. Creating bright, bold and colourful designs, she brings her ideas to life through screen printing, watercolour and paper-cut, combining traditional skills with digital techniques. Amber is looking forward to meeting you!

hello@amberelise.com
07817 638273
www.amberelise.com



11.00-18.00

M	T	W	T	F	S	S
18	19	20	21	22	23	24
25	26	27	28	29	30	1
2	3	4	5	6	7	8

49 11 Rugby Road

11 Rugby Road, Brighton BN1 6EB



With a brand new layout of all the downstairs rooms to explore, 11 Rugby Road are putting on their fully festive Open House! As well as a house packed with art and craft, expect a forest of Christmas trees! Sprouts! Candy canes! Mulled wine! And much, much more...

hello@11RugbyRoad.com
@11RugbyRoad
www.11RugbyRoad.com



11.00-17.30

M	T	W	T	F	S	S
18	19	20	21	22	23	24
25	26	27	28	29	30	1
2	3	4	5	6	7	8

50 Stanley Road Store on Springfield

158 Springfield Road, Brighton BN1 6DG

Daming Chloë Parkes



Shortlisted for Best Open House in 2018 and 2019.

Subvertiser	Chiara Bianci	Kirstin Stride
Nikki Ward	Hummingbird Hawkmoth	Draw of Plush
Tiki Bis	Hyde Wares	PorkChops
Seventy Seven Seas	Rachel Eardley	Moontrap
Miranda's Plants	Hal of Hove	Art Hobbs
Desertland Wares	Bella does Brighton	Oh Some Day
Lost & Foundry	Hello Terry	Sassy Luke
Lulu McQueen	Melanie Wickham	Bazaar Folk
Collage Queen	Windmill Pottery	Alice Ashton
Artisan Candles	Saffron Reichenbacher	
Tin City	Chloe Parkes	

Also open 14th and 15th December

thestanleyroadstore@gmail.com
07931 224449
www.thestanleyroadstore.co.uk

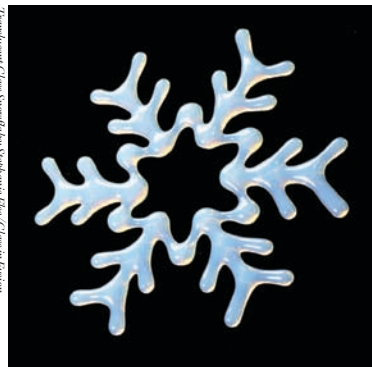


						11.00-18.00	
M	T	W	T	F	S	S	
18	19	20	21	22	23	24	
25	26	27	28	29	30	1	
2	3	4	5	6	7	8	

51 Glass In Fusion

Unit 9 Beaconsfield Studios, 25 Ditchling Rise, Brighton BN1 4QL

Translucent Glass snowflakes: Stephanie Else; Glass in Fusion



Glass In Fusion is delighted to be opening for another festive season!

On show will be a vibrant collection of glass artworks, stunning statement rings and beautiful enamel pieces, along with a wonderful range of hand made leather goods. There will be

fantastic gift ideas for everyone, including shimmering glass snowflakes.

Come and be bedazzled!

Stephanie Else *Glass*
Victoria Lovell *Statement rings*
Romi Shadler Reingold *Enamel*
Graham Whitaker *Leather*

stephanie@glassinfusion.co.uk
07887 975818
www.glassinfusion.co.uk



						11.00-18.00	
M	T	W	T	F	S	S	
18	19	20	21	22	23	24	
25	26	27	28	29	30	1	
2	3	4	5	6	7	8	

52 Milton House

72 Clyde Road, Brighton BN1 4NP

Morning Vindict: Sarah Jones



Apostroph Fabric Sculptures: Sue Hurman and Sarah Rickard



Sarah Jones
Prints
Juliet Wallage
Babysboes
Mara Garatti
Jewellery
Handmade and Vintage
Gifts
Madame Treacle
Cards
Sarah Vosmer
Ceramic brooches
Kate Kingham
Knitted creations
Sarah Rickard
Ceramics
Sal Goodyer
Leather accessories

Jane Clucas
Vintage textile creations
Sue Hurman
Textile sculptures
Vee Pease
Silver jewellery
Type Monkey
Epibemera assemblage

A warm welcome awaits at Milton House this Christmas – come and see why the public vote us onto the best Open House list every year...

sarahjonesprints@gmail.com
07815 208755
www.sarahjonesprints.co.uk



						11.00-18.00	
M	T	W	T	F	S	S	
18	19	20	21	22	23	24	
25	26	27	28	29	30	1	
2	3	4	5	6	7	8	

53 New England House Open Studios

New England House, New England Street, Brighton BN1 4GH

Etchings: John Moore



Bougainvillea Sunset: Rea Stavropoulos



Commotion: Heike Roesel



Woodland Wonders: Rozana Gilbert

Now in its 21st year, NEH offers an exceptional range of artists, designers and makers, all under one roof, who welcome you to their studios with unique items to suit all budgets.

Torba *Textiles*
Special Delivery Cards
Paper and books
SUKIE *Paper and books*
Tanja Ufer *Jewellery Jewellery*
Tiki by Cécile Gilbert *Jewellery*
Seiko Kato *Mixed media*
Shelley Morrow *Drawing*
Silver Cloud *Art Jewellery*
Simon Mathews *Ceramics*
Solaa *Jewellery Jewellery*
Scarlett Rebecca *Printmaking*

Peter James Field *Painting*
Rea Stavropoulos *Painting*
Rowena Gilbert *Ceramics*
Rowena Park *Jewellery Jewellery*
Sam Williams *Printmaking*
Sarah Jane *Photography Photography*
Marie Murphy Studio *Textiles*
MayaH *Jewellery Jewellery*
NangleKnits *Textiles*
Oriana *Jewellery Jewellery*
Patrick Edgeley *Printmaking*

Margaret McGregor Betts *Painting*
Kathie Murphy *Jewellery*
Ken Eardley *Ceramics*
Kriya Arts *Paper and books*
Lancelot Richardson *Painting*
Laura Ryan *Painting*
Made by Jarl *Printmaking*
Heike Roesel *Etchings*
Holly Bell *Ceramics Ceramics*
James Kuszewski *Drawing*

Janina Chowanice *Ceramics*
Jo Riddell *Printmaking*
John Moore *Jewellery*
Amanda Doughty *Jewellery Jewellery*
Angela Evans *Ceramics*
Bob & Blossom *Textiles*
Catherine Anna Benson *Glass*
FinchCeramics *Ceramics*
Harriet Butler *Printmaking*

Open 6th-8th December only.

info@nehopenstudios.org.uk
http://nehopenstudios.org.uk



Fr 11.00-20.00, Sa-Su 11.00-18.00													
M	T	W	T	F	S	S							
18	19	20	21	22	23	24							
25	26	27	28	29	30	1							
2	3	4	5	6	7	8							

54 Rose Hill Rebels Open House

Rose Hill Court, Rose Hill Terrace, Brighton BN1 4HS

Kathryn Lurie



Rose Hill Rebels are a group of residents who take part in weekly creative ageing activities. The group is funded by Sussex Community Foundation and supported by the charity Equal Arts, who bring in artists to facilitate the sessions.

Artists include:
Joe *Photography*
Tuck *Sculpture*
Lanie *Mixed media*

Lanie says:
'Most of my work is based around nature. I use wool, buttons, paint, paper, flowers or anything else that captures my imagination.'

lucy@equalarts.org.uk



12.00-16.00						
M	T	W	T	F	S	S
18	19	20	21	22	23	24
25	26	27	28	29	30	1
2	3	4	5	6	7	8

55 Grace Eyre Artists

Unit 2, Brighton Open Market, Marshalls Row, Brighton BN1 4JU

Robynne of Culture Beyond Words



An inspiring collection of works made by artists with learning disabilities; including paintings, prints, textiles, mosaics and photography. All work is original and individually made, some with a Christmas theme.

ewillcocks@grace-eyre.org
01273 222067
www.grace-eyre.org



Sa 11.00-16.00, Th 13.30-15.30, Fr 11.30-14.00						
M	T	W	T	F	S	S
18	19	20	21	22	23	24
25	26	27	28	29	30	1
2	3	4	5	6	7	8

56 Look at This: Phoenix Gallery

Phoenix Art Space, 10-14 Waterloo Place, Brighton BN2 9NB

LOOK AT THIS
PHOENIX FESTIVAL
OF PRINTMAKING

Look at This: Phoenix Festival of Printmaking is a month-long celebration of contemporary printmaking, featuring a curated exhibition of work by leading designers, artists and illustrators who produce prints in a wide range of disciplines.

Plus free events:
Printmakers' Tabletop Fair:
23 & 24 November 11am-5pm

Printmaking Weekend:
30 November & 1 December:
11am-5pm

Family Printmaking Weekend:
7 & 8 December
11am - 1pm & 2pm-4pm

Exhibition open Wednesdays -
Sundays, 16 November - 15 December.

For further details see Instagram
on website listing.

info@phoenixbrighton.org
01273 603700
www.phoenixbrighton.org



11.00-17.00						
M	T	W	T	F	S	S
18	19	20	21	22	23	24
25	26	27	28	29	30	1
2	3	4	5	6	7	8

60 Roberto Ponte

22 Gerard Street, Brighton BN1 4NW

Roberto Ponte



Roberto Ponte is inspired by the seascapes and landscapes around him. Much of his current work is of locations around his studio, as well as the countryside and seaside he has fallen in love with, such as the counties of East Sussex and Devon. Over the years Roberto has received commissions from a broad range of clients, including public companies and private collections.

"What I am trying to convey is a feeling. When I am painting, I am transported to a place of peace. I hope that through the use of colour and lines, I can express this."

As an artist, I work hard to develop paintings that speak both to me and to others about the beauty that exists in the world."

01273 880981
robertopontear@aol.com



10.00-18.00						
M	T	W	T	F	S	S
18	19	20	21	22	23	24
25	26	27	28	29	30	1
2	3	4	5	6	7	8

57 The Grange Gallery

The Grange, Rottingdean, Brighton BN2 7HA



Edwards & Todd
Angela Wintle
Pippa Stacey
Hannah Thompson
Liza Morton
Troy Ohlson
Annie Soudain
Red Black Clay
Anne Bowes
Liza and David Brown
Helen Brown
Alison Chesman
Gary Edwards
Fen
Sara Hill
Denise Hopper
Carol Lawson
Chris McEwan
Anne Bowes
David Freeman
Arthouse Meath
Elizabeth Lamont
Jenny Reason
Emma O'Brennan-Pizer

The Grange Gallery is in the former home of artist Sir William Nicholson, with gardens designed by Lutyens and Jekyll. A group of 24 Sussex artists are exhibiting jewellery, ceramics, textiles, glass, printmaking, landscape and seascape painting, vintage Christmas gift wrapping and cards.

The exhibition is open six days a week:
November 12th – December 5th, Tuesday – Saturday.

annesara.odor@gmail.com
01932 873697
www.rottingdeanpreservationsociety.org.uk



Tu-Sa 10.30-16.00, Su 14.00-16.00

M	T	W	T	F	S	S
18	19	20	21	22	23	24
25	26	27	28	29	30	1
2	3	4	5	6	7	8



58 Steephill Saltdean

Steephill, 22 Crowborough Road, Saltdean BN2 8EA



Colourist and Art Deco painter Polly Farrell repurposes four other artists to join her in AOH.

Kristine Keina uses colour and texture to transfer her emotions to canvases; the late Ken Garwood produced a celebration of colourful flowers, plants,

paulinefarrell11@virginmedia.com
07799 374383
www.SteePhill22.com



trees and wildlife in nature; Mandy Merritt repurposes plastic to create unique flower designs as decorative objects on canvases; Laura Callaghan is a mixed media artist, specialising in works of the natural world.

We hope you will visit us!

11.00-16.00

M	T	W	T	F	S	S
18	19	20	21	22	23	24
25	26	27	28	29	30	1
2	3	4	5	6	7	8



59 Pruden and Smith

The Crossroads, 2 South Street, Ditchling BN6 8UQ

The Pruden and Smith gallery and workshop, on Ditchling Crossroads, showcases contemporary jewellery in gold, platinum and silver, incorporating diamonds and unusual gemstones from all over the world. This year's Christmas collection features hand cut Ruby Zoisite and Tigers Eye displayed alongside old favourites like rough diamond and lapis lazuli. Pruden and Smith are jewellery designers and makers whose passion for contemporary design shows in everything they do. Over the last 30 years their complete precious metal design-to-make service, from engagement rings to chalices, has delighted customers worldwide.

As well as their well-stocked gallery of work they also redesign your existing jewellery in a process called 'A Precious Legacy'. Designer Rebecca Smith takes inspiration and materials from your jewellery collection to generate designs for new pieces. It ensures that your jewellery is enjoyed and worn whilst maintaining the sentimental connection to past pieces. Phone and book an hours free consultation.

You can also take a tour of their workshops then follow it with a visit to Ditchling Museum of Art and Craft, which features the work and tools of Anton Pruden's grandfather Dunstan, silversmith with the Guild of St Joseph and St. Dominic.

info@prudenandsmith.com
01273 846338
www.prudenandsmith.com



Also open Mo-Fr 22

10.00-17.00

M	T	W	T	F	S	S
18	19	20	21	22	23	24
25	26	27	28	29	30	1
2	3	4	5	6	7	8

SOL DESIGN COLLECTIVE

PROGRAMMES TO
NURTURE GROWTH
in your creative practice



Seed
Bud
Blossom
Bloom
Fruit

www.SOLDesignCollective.com

Supporting Local Artists

LAWRENCE

ART SUPPLIES SINCE 1859

Discover Lawrence Art Shop in Hove...
you'll find top quality artists'
materials and equipment from
around the world.



208-212 Portland Road, Hove, BN3 5QT
01273 260280

(Free customer car park at rear of shop)

www.LAWRENCE.co.uk



Artists Open House 2019 Sponsors & Print Partners

Contact: marketing@gemini-print.co.uk or call **01273 464884**
for help with professional printing (posters, leaflets, brochures,
flyers, postcards, art prints, folders, price lists, labels etc.)
plus an impressive range of promotional and retail
merchandise (banners, pop-ups, event materials,
branded gifts, clothing, pens, pencils etc.)

- Established +40 Years
- Award Winning Standards
- Eco Certified
- Local Team

Call the team: 01273 464 884
www.gemini-print.co.uk

HQ: Dolphin Way. Shoreham by Sea. BN43 6AZ
Bristol • London • County Durham



FRAME FACTORY

High quality contemporary
framing & giclée printing

Framing

Bespoke framing
Exhibition framing
Mount cutting
Canvas stretching
Box framing
Friendly professional advice

Printing

Large format printing
Printing onto canvas
Limited edition giclée printing

01273 609207

www.frame-factory.co.uk
info@frame-factory.co.uk

7 Sydney Street, Brighton, East Sussex,
BN1 4EN

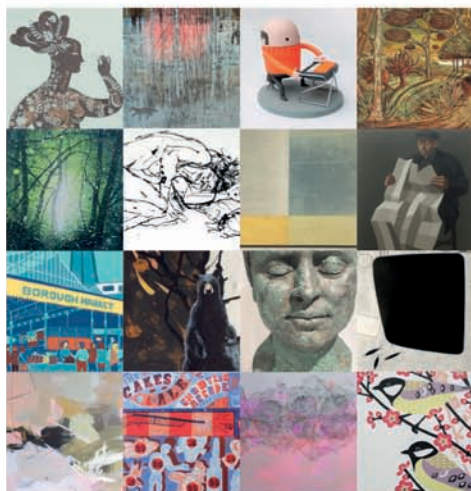


TUTTON & YOUNG *present*

BRIGHTON ART FAIR AT LEWES

LEWES TOWN HALL

30 NOV - 1 DEC



LEWES TOWN HALL
FISHER STREET
LEWES BN7 2QS

WWW.BRIGHTONARTFAIR.CO.UK



FACEBOOK [tuttonandyoung](https://www.facebook.com/tuttonandyoung)
INSTAGRAM/ TWITTER [@tuttonandyoung](https://www.instagram.com/tuttonandyoung)

Punk on PAPER

ORIGINAL MUSIC
POSTERS

SEX PISTOLS
THE CLASH
DAVID BOWIE
THE SMITHS...

PUNKONPAPER.COM

latest musicbar

the place for parties!

Thinking of a party? Let our team sort it out, whilst you and your guests focus on having a wonderful time



“We had the best day ever. Thank you so much for all of your hard work in making that happen, your team were brilliant. We couldn't have asked for anything more!”

“All the staff were really nice and helpful and it was all set up perfectly so I didn't need to do a thing. Thank you so much for everything. Love the Latest Music Bar!”

“Everyone and everything was brilliant last night. We were really chuffed. thanks for everything Latest Musicbar!”



email: bookings@thelatest.co.uk

latest musicbar 01273 687171

“ALL WRAPPED UP”

Book direct and receive a glass of bubbles and an indulgent treat using your unique code:

AOHXMAS19

All you need to do is enter the code in the 'Special Requests' box when making your booking through myhotels.com

Additional **BOOK DIRECT** perks include:

£10 minibar credit

Priority upgrades, subject to availability

20% off in Merkaba

15% off at Small Batch Coffee

My Brighton
17 Jubilee Street
Brighton
BN1 1GE

Offer applied when booking direct for Best Flexible and All Paid Up rates only. Valid from 11th November 2019 – 31st January 2020. Excludes 27th-31st December. Terms and conditions of the selected rate apply as stated.



MY BRIGHTON



TUTTON & YOUNG

present

MADE BRIGHTON

THE DESIGN AND CRAFT FAIR

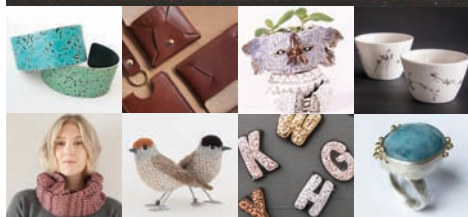
ST BARTHOLOMEW'S
FRI 22 - SAT 23
NOVEMBER

10.30 - 5.30

ST BARTHOLOMEW'S CHURCH
ANN STREET
BRIGHTON BN1 4GP

TICKETS £5 ON THE DOOR

WWW.MADEBRIGHTON.CO.UK



PULLINGERS ART SHOP



FIND US AT:

Closs & Hamblin,
TOP FLOOR

179 Western Road,
Brighton, East Sussex,
BN1 2BA.

www.pullingers.com

Pullingers Art Shop at Closs & Hamblin
specialise in Fine Art & Graphic Supplies

10% OFF

For Art Groups with
membership ID



Home is where
the art is.



Hamptons Brighton and Hove
Sales. 01273 803289 Lettings. 01273 803204

Beyond your expectations

www.hamptons.co.uk



MAKE *unique* CHRISTMAS PRESENTS

or give the gift of creativity with a short course voucher

www.westdean.ac.uk

Near Chichester, West Sussex PO18 0QZ



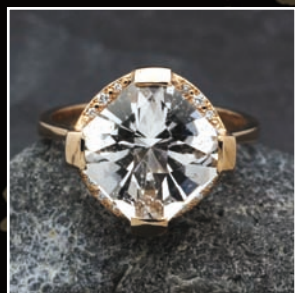
Contemporary Handmade Jewellery



- Bespoke design service
- Remodelling, repairs & alterations
- Exciting collection of jewellery by carefully selected British designers

www.julianstephens.com

Visit our new website to get a
FREE Ring Sizer and FREE delivery
on all purchases



37 GLOUCESTER ROAD
BRIGHTON BN1 4AQ
TEL: 01273 692110